

MEASURE CC BOND PROGRAM

Local Contractor Outreach & Social

Agenda

1

Introductions

- ❖ Owner
- ❖ Construction Management Team
 - ❖ SafeworkCM
 - ❖ Kitchell

2

General Information

- ❖ Measure CC Bond Program Overview
- ❖ District Vision & Goals
- ❖ Prequalification Process
- ❖ Milestone Schedule

3

Measure CC Bond Program

- ❖ SBCCCD Video
 - ❖ Overview of Measure CC at Work: Build Out Concept

4

Contractor Roundtable Discussions

- ❖ Icon West
 - ❖ *How to Navigate the CBA-PLA with your Subcontractors*
- ❖ McCarthy
 - ❖ *How to Prequalify with SBCCD & McCarthy as a Subcontractor*
- ❖ The Solis Group
 - ❖ *CBA-PLA Overview*

5

Contractor Outreach Social

- ❖ Questions & Answers

6

Closing Statement

Meet the SBCCCD Measure CC Team



Jose F. Torres
Executive Vice
Chancellor



Ynez Canela
Director, Local
Business Outreach



Farrah Farzaneh
Director, Facilities Planning, Emergency
Management & Construction



Hassan Mirza
Facilities Project
Manager



Abel Favela
Assoc. Director Bond Program Planning,
& Construction Project Manager



Yash Patel
Sustainability and
Energy Manager



Tony Cong
CHC Project Manager



Erika Menge
SBCCD Administrator

Meet the SBCCD Program Management Team



John Duong
Program Director



Sam Yacob
SBVC Design Manager



Veronica Flores
CHC Design Manager



Ron Hoppe
Financial & Contract Manager



Sosseh Taimoorian
Assistant Design Manager



Selena Chow
Assistant Design Manager

Meet the SBVC Construction Management Team



Domingo Camarano
Principal-in-Charge



Michael Villegas
Vice President of
Education & Municipalities



Greg Ochoa
Deputy Bond Manager



Estevan Sanchez
Senior Project Manager



Shail Shah
Project Engineer

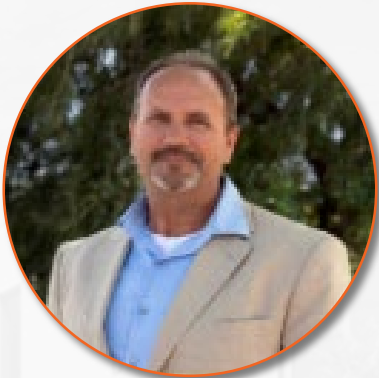


Michael Delgado
Project Engineer

Meet the CHC Construction Management Team



Daniel Rodriguez
Program Director



David Shire
Construction Manager



Danielle Jackson
Senior Project Engineer

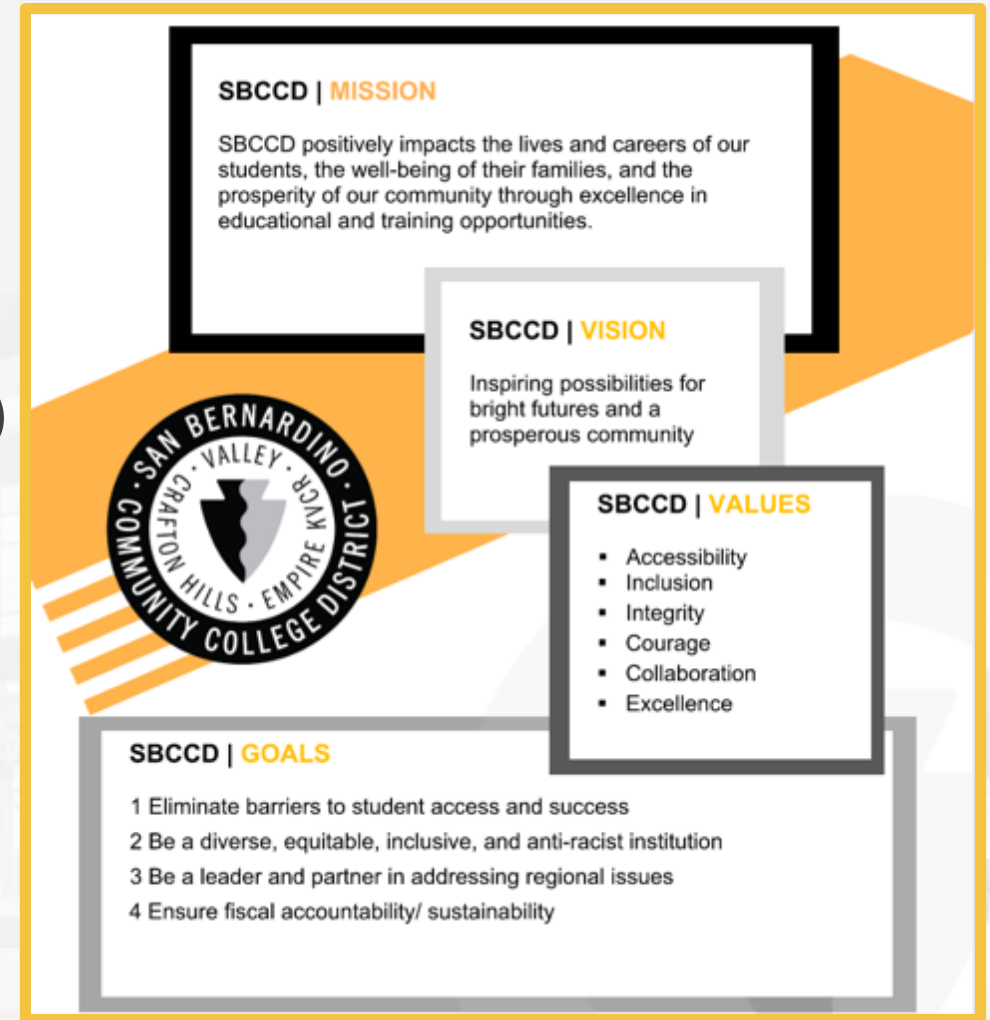
MEASURE CC BOND PROGRAM OVERVIEW

Voters approved Measure CC in November 2018, which generated \$470M to upgrade the District's Facilities.
\$470M Measure CC, \$75M Measure M Bonds,
& \$33M State Funding

Progressive Design-Build, DB and
Design-Bid-Build Delivery Methods

SBCCD District Vision & Goals

- ❖ **Community Benefits Agreement (CBA-PLA)**
 - ❖ The Solis Group
- ❖ **Partnering**
- ❖ **Pre-Qualification Process**
 - ❖ Pre-Qual Questionnaire (*Project Specific*)
 - ❖ UCCAP/CUPPPCCA
- ❖ **Zero Net Energy**
- ❖ **Sustainability**
- ❖ **Safety**
 - ❖ “Everyone Goes Home” Attitude



SBCCCD Sustainability Goals

- ❖ Zero Net Energy (ZNE) Ready Buildings
- ❖ CALGreen Tier 2 Standard
- ❖ LEED Certified Buildings

“Adopting sustainable strategies can unlock educational, health, and environmental benefits, fostering a climate-conscious mindset and paving the way for careers, communities, and education systems that prioritize climate action.”

- Jose F. Torres, Executive Vice Chancellor, San Bernardino Community College District

SBCCCD Safety Plan

SBCCCD Health & Safety Plan

“SBCCCD's Health and Safety Programs aim to establish and promote a safe and healthy working environment on campus. Through the implementation of these programs, they play a role in ensuring the District's compliance with Federal, State, and Local environmental, health and safety regulations.”

- ❖ Construction Jobsite Safety Inspections
- ❖ CalOSHA Guidelines & Regulations
- ❖ Contractor Accountability
- ❖ PPE | Housekeeping | Safety Meetings | Etc.
- ❖ *“Everyone Goes Home”* Attitude



SBVC Project List

Project ID	Project Name	Campus	Delivery Method
CC01-3601	Technical Building (CP1) <i>(In-Construction)</i>	SBVC	DBB
CC01-3603	M&O Building Repurposing	SBVC	DBB
CC01-3605	New Softball Field <i>(On-Hold)</i>	SBVC	DBB
CC01-3606	Student Services Building <i>(In-Design)</i>	SBVC	D/B
CC01-3607	Administration & Campus Center Repurposing	SBVC	D/B
CC01-3608	Career Pathways Phase 2 <i>(In-Design)</i>	SBVC	D/B
CC01-3609	Physical Sciences & Health and Life Science Mod.	SBVC	DBB
CC01-3610	SBVC Campus-Wide Infrastructure; See Next Page	SBVC	DBB

SBVC Campus-Wide Infrastructure Project List

Project ID	Project Name	Delivery Method
CC01-3610-02	Library Roof Replacement (<i>Complete</i>)	DBB
CC01-3610-04	Planetarium HVAC Replacement (<i>In-Construction</i>)	DBB
CC01-3610-05	Warehouse M&O Building (<i>Complete</i>)	DBB
CC01-3610-06	PS HLS Fume Hoods Upgrades (<i>In-Construction</i>)	DBB
CC01-3610-07	Utility Upgrades (<i>Complete</i>)	DBB
CC01-3610-08	East Wing Mechanical Improvements (<i>In-Construction</i>)	DBB
CC01-3610-09	Old Central Plant Re-Purpose (<i>Complete</i>)	DBB
CC01-3610-10	Campus Roof Replacements (<i>Complete</i>)	DBB
CC01-3610-11	Facilities Site Improvements	DBB

SBVC Campus-Wide Infrastructure Project List

Project ID	Project Name	Delivery Method
CC01-3610-12	Campus Security Upgrades	DBB
CC01-3610-13	Parking Lot #8 Improvements	DBB
CC01-3610-14	Greek Theatre Solar Canopy (<i>In-Design</i>)	DBB
CC01-3610-15	Business Quad Development (<i>In-Design</i>)	DBB
CC01-3610-16	Fiber Optic Termination & Testing (<i>Complete</i>)	DBB
CC01-3610-18	Gymnasium Lobby Flooring R&R (<i>Complete</i>)	DBB
CC01-3610-19	Parking Lot #10 Improvements	DBB
CC01-3610-20	Campus Perimeter Fencing Upgrades (<i>Complete</i>)	DBB
CC01-3610-24	Biology Garden Expansion (<i>In-Construction</i>)	DBB

CHC Project List

Project ID	Project Name	Delivery Method
CC02-3623	Gymnasium Demolition	DBB
CC02-3625	Public Safety Training Center	DBB
CC02-3626	Campus Wide-Infrastructure Projects	DBB
CC02-3626-01	Exterior Lighting	DBB
CC02-3626-02	Campus Wide Irrigation	DBB
CC02-3626-04	Central Plant Controls Upgrades & Chillers	DBB
CC02-3626-14	LRC Generator & Equipment Upgrades	DBB
CC02-3626-19	Campus Solar Photovoltaic Panels	DBB
CC02-3631	New Instructional Building	DBB

Project ID	Project Name	Delivery Method
CC02-3633	Central Complex 2 Renovation	DBB
CC02-3635	New Performing Arts Center	DBB



SBCCD

PLANET BIDS VENDOR PORTAL

<https://pbsystem.planetbids.com/portal/29414/portal-home>

Overview of Measure CC at Work: Build Out Concept



MEASURE CC

BUILDING NEW OPPORTUNITIES FOR
OUR STUDENTS & OUR COMMUNITY



ICON WEST

Icon West, Inc. Roundtable

How to Navigate the CBA-PLA

MCCARTHY®



McCarthy Building Companies Roundtable

How to Pre-Qualify with SBCCD & McCarthy as a Subcontractor

MCCARTHY®



McCarthy Building Companies Roundtable

CBA- PLA

Questions?

Ynez D. Canela

Associate Director, Legislative & Community Relations

ycanela@sbccd.edu

(909) 381-8427 Office

(909) 640-4171 Text