

# Student Services Building



San Bernardino  
**Valley College**

## Project Description

- This transformative project will demolish the outdated 1970 Liberal Arts Building and construct a new Student Services building in its place at the heart of the San Bernardino Valley College campus. The new facility will consolidate various student support services into a single convenient location, offering a true one-stop center with a welcoming environment.
- With upgraded technology, efficient systems, and flexible spaces optimized for service delivery, the new Student Services building will significantly enhance the student experience and remove barriers to success through this comprehensive student support hub.

**Project:** Student Services Building

**Square Feet:** 100,000 sq. ft.

**Current Project Budget:** \$117.7M

**Delivery Method:** Progressive Design-Build

**Architect:** CannonDesign

**Contractor:** McCarthy

**Construction Manager:** Safework

**Project Manager:** AECOM

**Project Status:** In-Design

**Anticipated Start of Constr.:** May 2025

**Anticipated Project Completion:** Aug 2027

**Project Goal:** The new Student Services Building will replace the aging and inadequate Liberal Arts Building that provides a modern, accessible one-stop hub to support student success and increase equitable access to resources.



# Targeting LEED Platinum & Envision Gold



## Support Services Provided

Counseling & Matriculation

Student Equity & Success

Health & Wellness Services

Classrooms & Laboratories

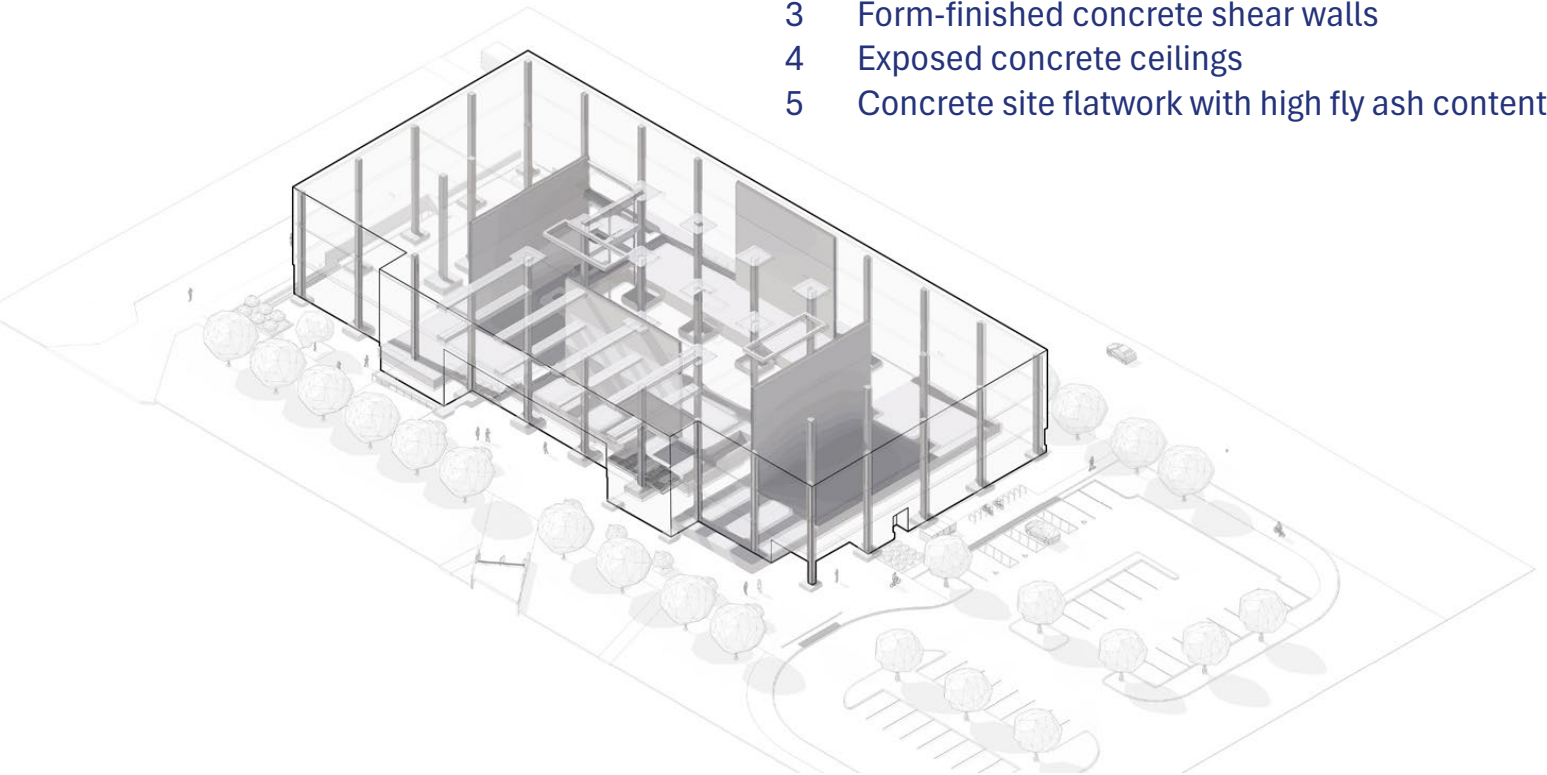
Tutoring Services

Assembly & Collaboration Spaces

Office Spaces & Conference Rooms

## Sustainability Features

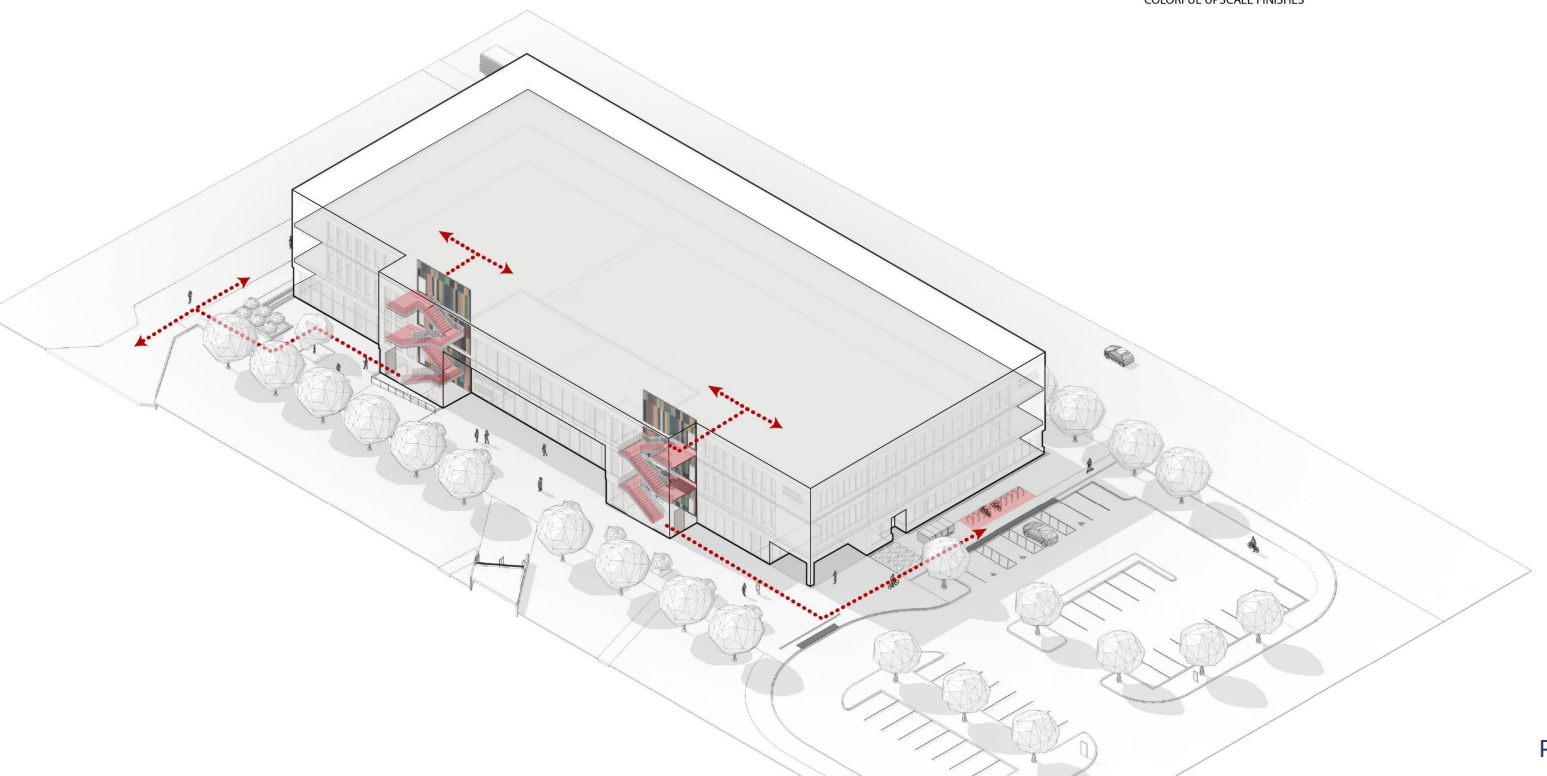
- 1 Reduction of Embodied Carbon
- 2 Exposed polished concrete floors
- 3 Form-finished concrete shear walls
- 4 Exposed concrete ceilings
- 5 Concrete site flatwork with high fly ash content

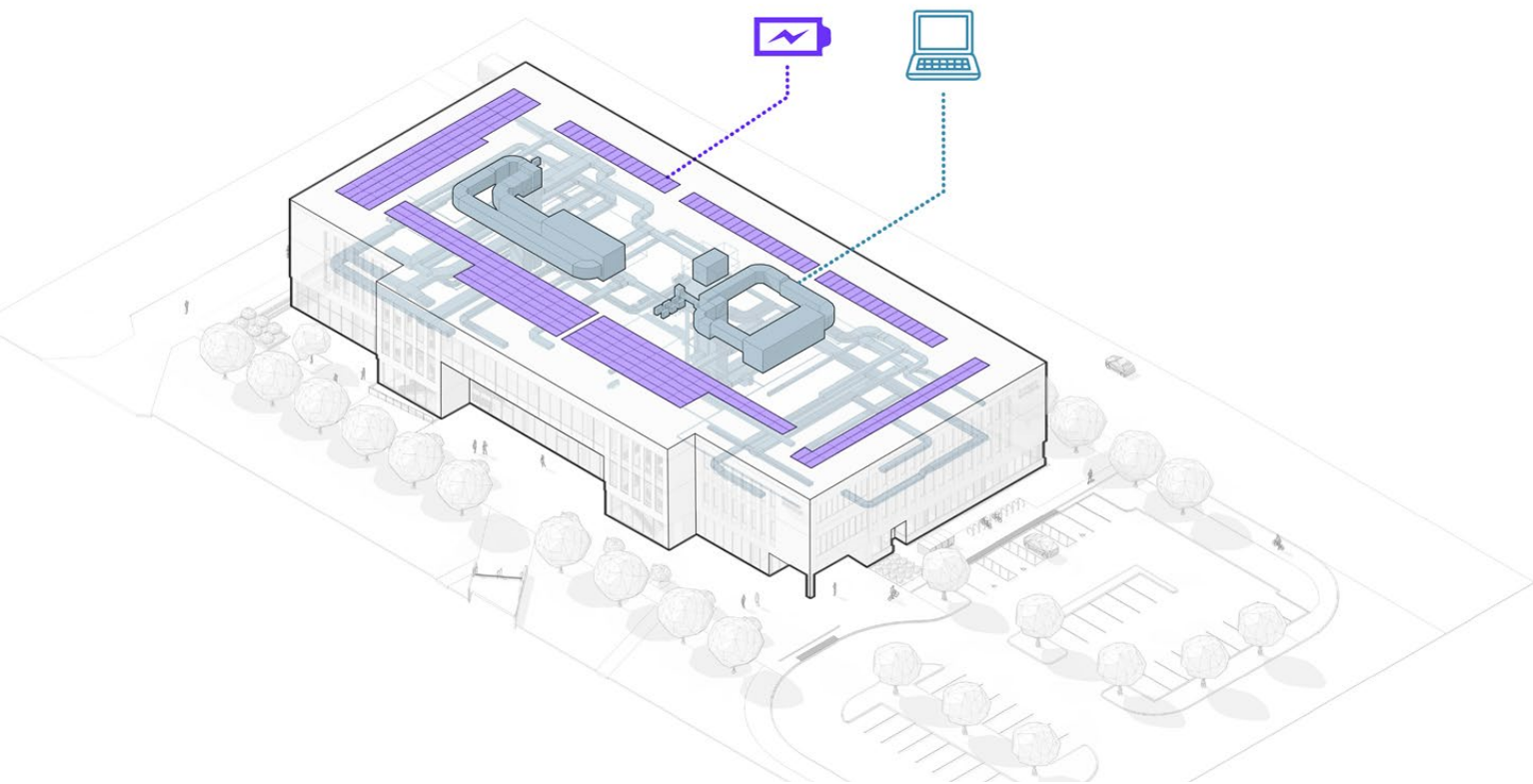


## Sustainability Features

- 1 Design for Active Occupants
- 2 Prominent location for bicycle lockers and racks
- 3 Feature stairs with door hold-opens, views, daylight, and colorful upscale finishes

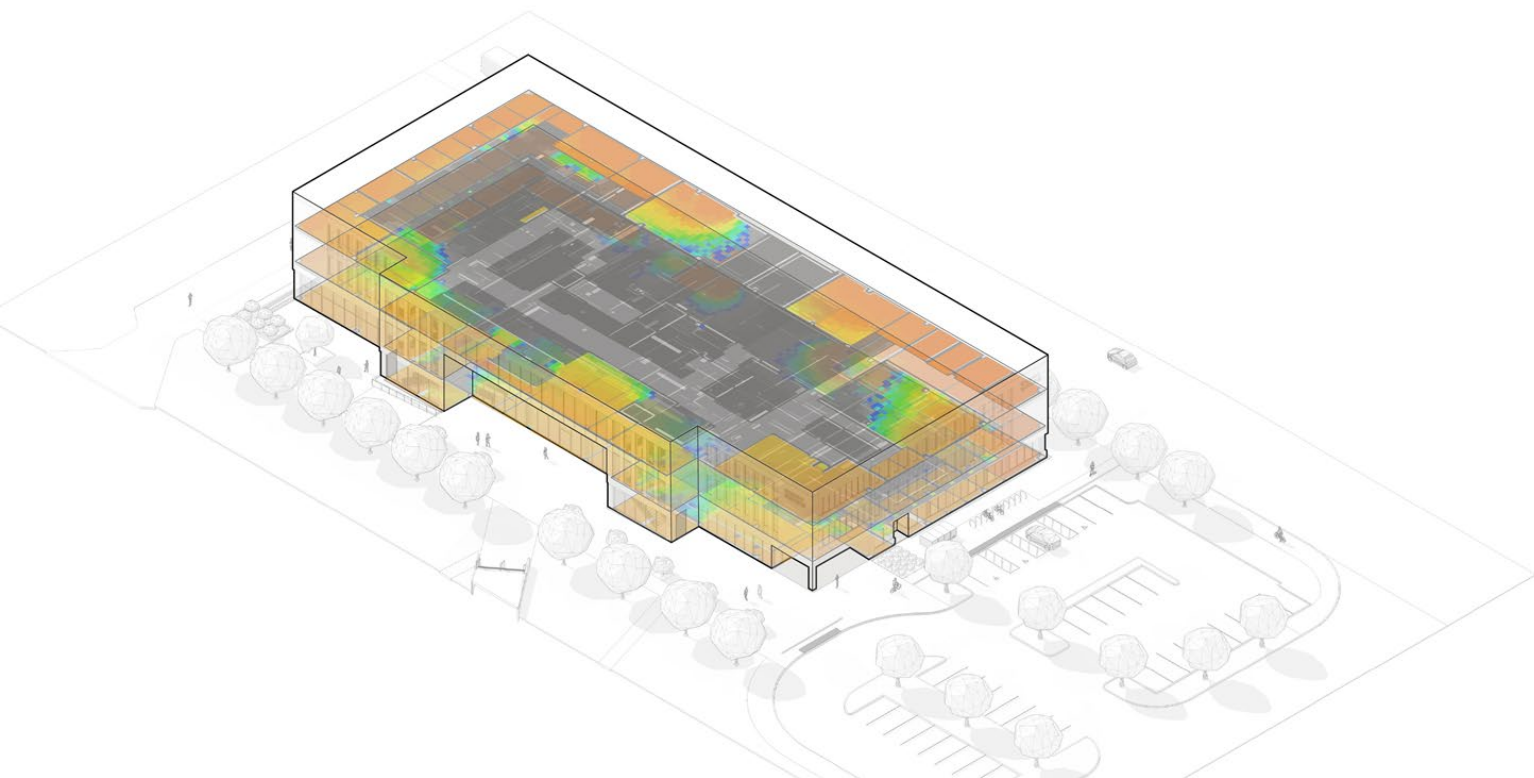
- PROMINENT LOCATION FOR BICYCLE LOCKERS AND RACKS
- FEATURE STAIRS WITH DOOR HOLD-OPENS, VIEWS, DAYLIGHT, AND COLORFUL UPSCALE FINISHES





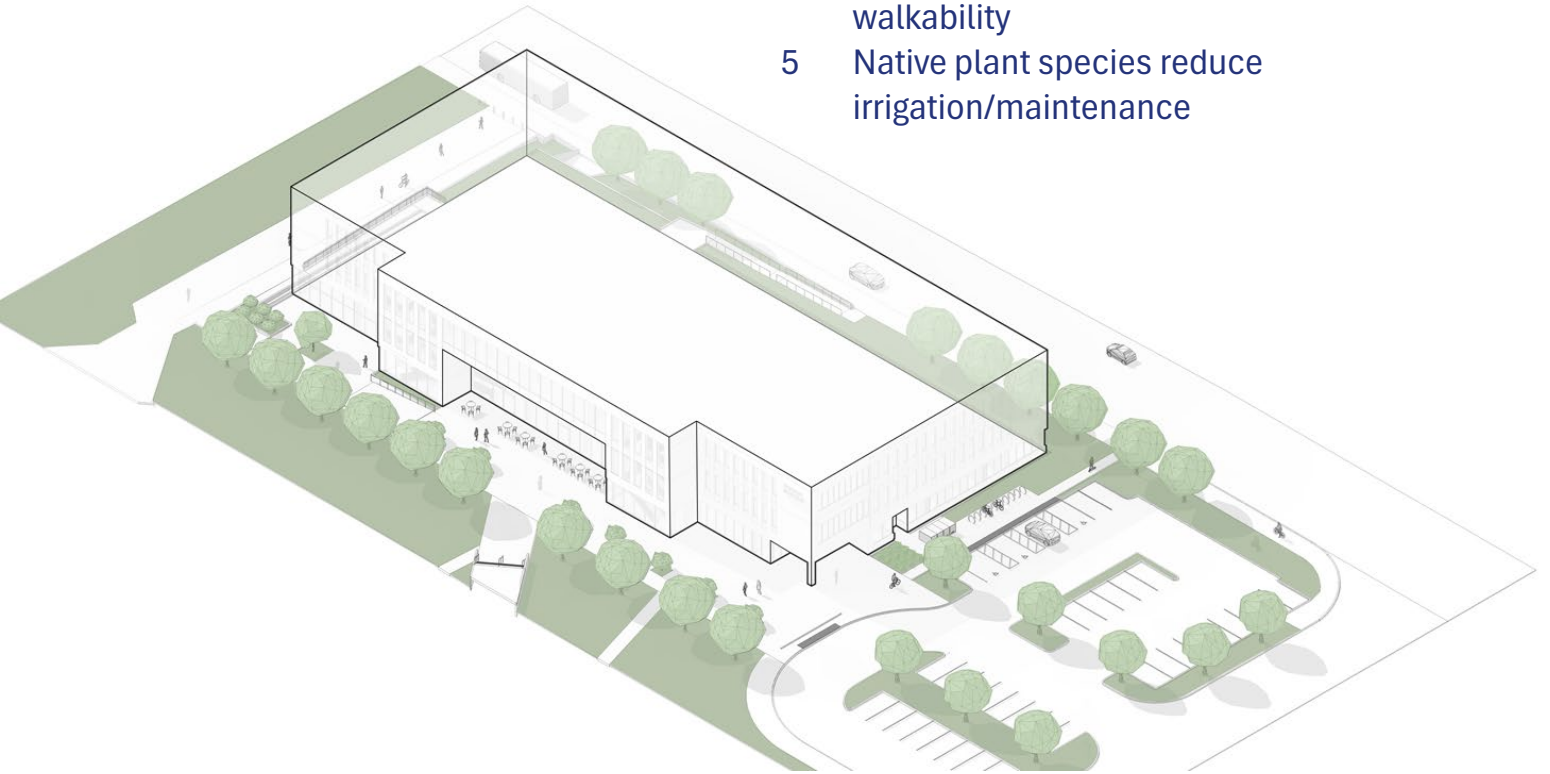
## Sustainability Features

- 1 Daylighting
- 2 Vertical windows with deep jambs to mitigate glare from the morning and afternoon low sun
- 3 Clear low-e glazing for improved color rendering and superior heat management
- 4 Use of storefront glass is constrained to entry and stair locations
- 5 Open plans with views



## Sustainability Features

- 1 Native Landscaping and Arboreal Shade
- 2 Parking lot trees reduce heat island effect
- 3 Plaza trees create outdoor comfort and biophilic effect
- 4 Street and walkway trees promote better walkability
- 5 Native plant species reduce irrigation/maintenance



## Sustainability Features

- 1 Active, Public, and Alternative Transportation
- 2 Wayfinding with directions to safe bike routes, public transportation, pedestrian routes, and nearby amenities
- 3 Clear pedestrian access from the street

