



# **2025 Fact Book**

## **FTES, Fill Rates, and Efficiencies**

Note that FTES includes only primary terms.

Prepared by the SBCCD Office of Research,  
Planning and Institutional Effectiveness

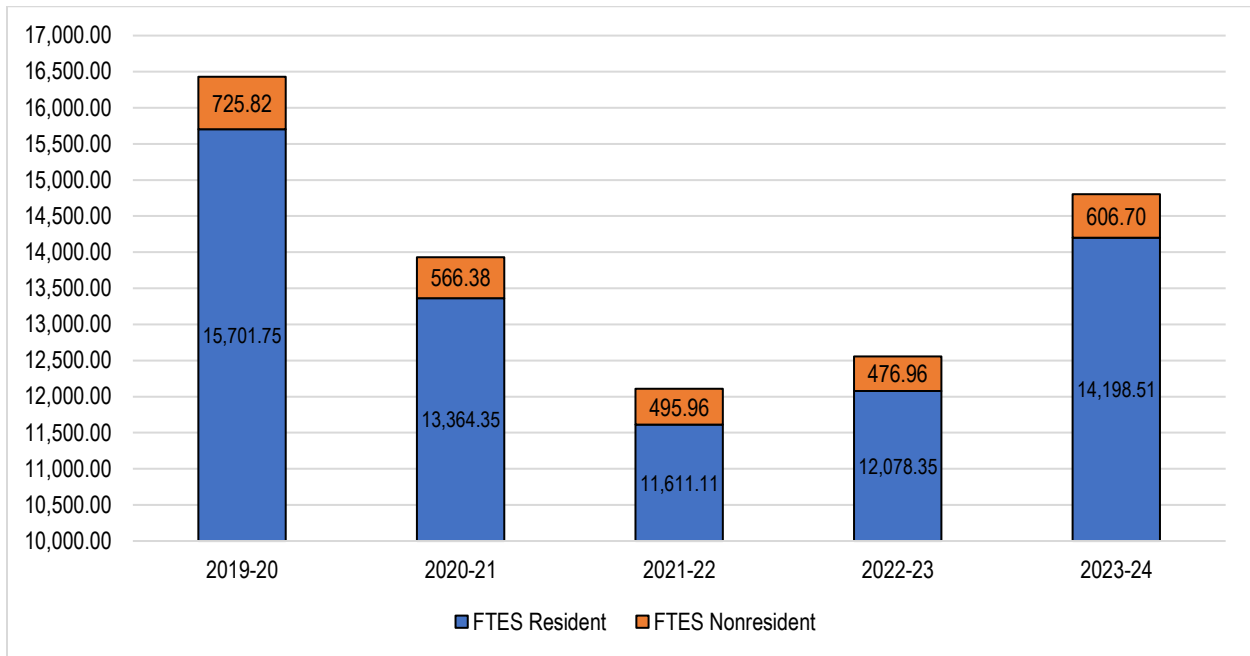


## Table of Contents

Annual FTES: 2019-20 Through 2023-24 .....	2
Annual Resident FTES By College: 2019-20 Through 2023-24.....	3
Annual Nonresident FTES By College: 2019-20 Through 2023-24 .....	4
Fill Rates: 2019-20 Through 2023-24 .....	5
Fill Rates By Terms: 2019-20 Through 2023-24 .....	6
Efficiency: Weekly Student Contact Hours (WSCH) and Full-Time Equivalent Faculty (FTEF) .....	7
Efficiency: Full-Time Equivalent Students (FTES) and Full-Time Equivalent Faculty (FTEF) .....	8
Efficiency By Terms: FTES, FTEF, FTES/FTEF Ratio.....	9



**Annual FTES: 2019-20 Through 2023-24**



Academic Year*	2019-20	2020-21	2021-22	2022-23	2023-24	5 Year Change	5 Year Average
Resident FTES	15,701.75	13,364.35	11,611.11	12,078.35	14,198.51	-9.6%	13,390.82
Nonresident FTES	725.82	566.38	495.96	476.96	606.70	-16.4%	574.36
<b>FTES Total</b>	<b>16,427.58</b>	<b>13,930.73</b>	<b>12,107.07</b>	<b>12,555.31</b>	<b>14,805.21</b>	<b>-9.9%</b>	<b>13,965.18</b>

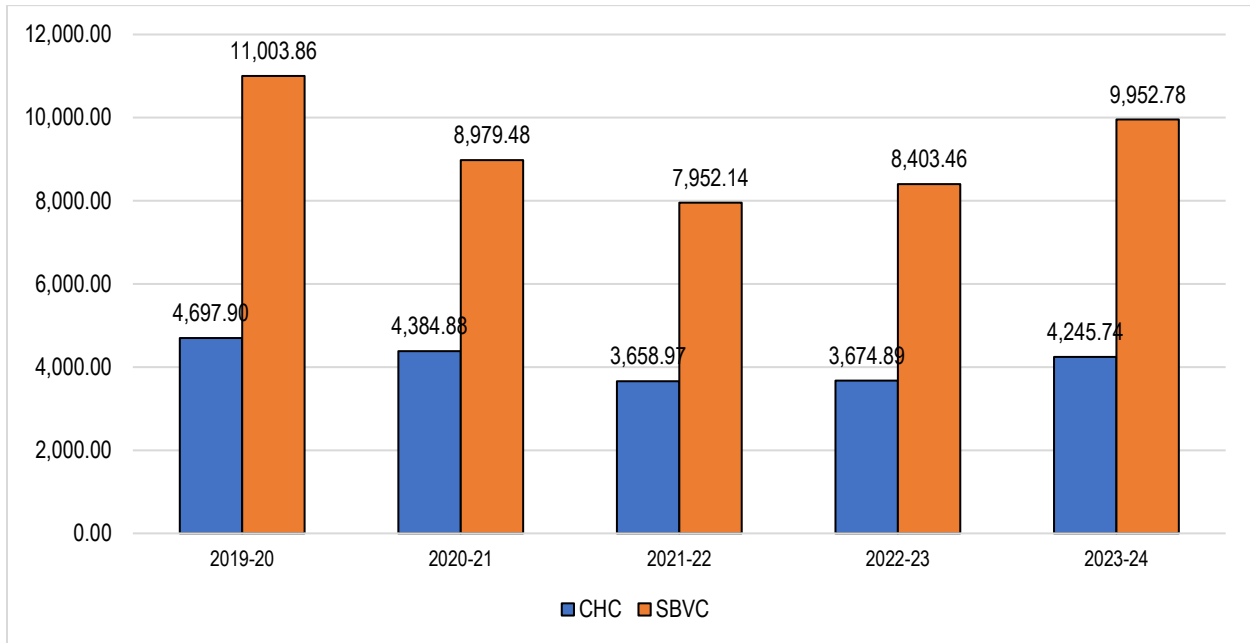
Source: Internal Executive Information System (EIS)

Note: \* based on section's start date not reporting year

Between 2019-20 and 2023-24, the District FTES declined by 9.9%, from 16,427.58 in 2019-20 to 14,805.21 in 2023-24. The resident FTES declined by 9.6%, from 15,701.75 in 2019-20 to 14,198.51 in 2023-24, and the nonresident FTES also declined by 16.4%, from 725.82 in 2019-20 to 606.70 in 2023-24.



**Annual Resident FTES By College: 2019-20 Through 2023-24**



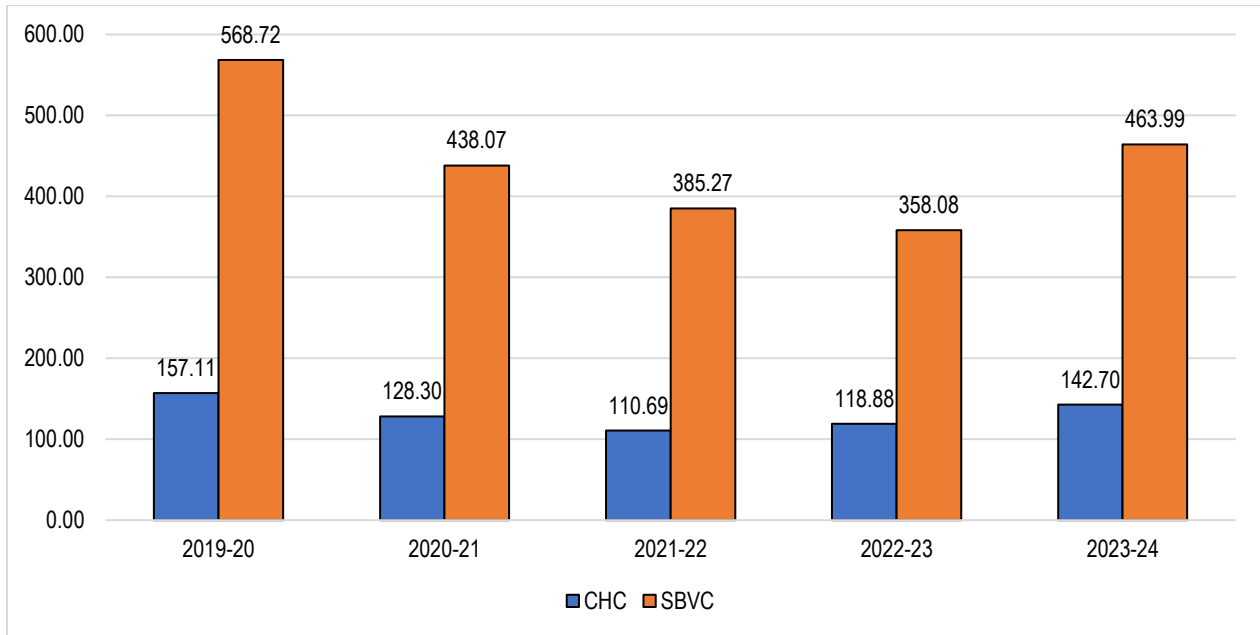
	Resident FTES 2019-20	Resident FTES 2020-21	Resident FTES 2021-22	Resident FTES 2022-23	Resident FTES 2023-24	5 Year Change	5 Year Average
CHC	4,697.90	4,384.88	3,658.97	3,674.89	4,245.74	-9.6%	4,132.47
SBVC	11,003.86	8,979.48	7,952.14	8,403.46	9,952.78	-9.6%	9,258.34
SBCCD	15,701.76	13,364.36	11,611.11	12,078.35	14,198.51	-9.6%	13,390.82

Source: Internal Executive Information System (EIS)

Between 2019-20 and 2023-24, CHC’s resident FTES declined by 9.6%, from 4,697.90 in 2019-20 to 4,245.74 in 2023-24, and SBVC’s resident FTES also declined by 9.6%, from 11,003.86 in 2019-20 to 9,952.78 in 2023-24.



**Annual Nonresident FTES By College: 2019-20 Through 2023-24**



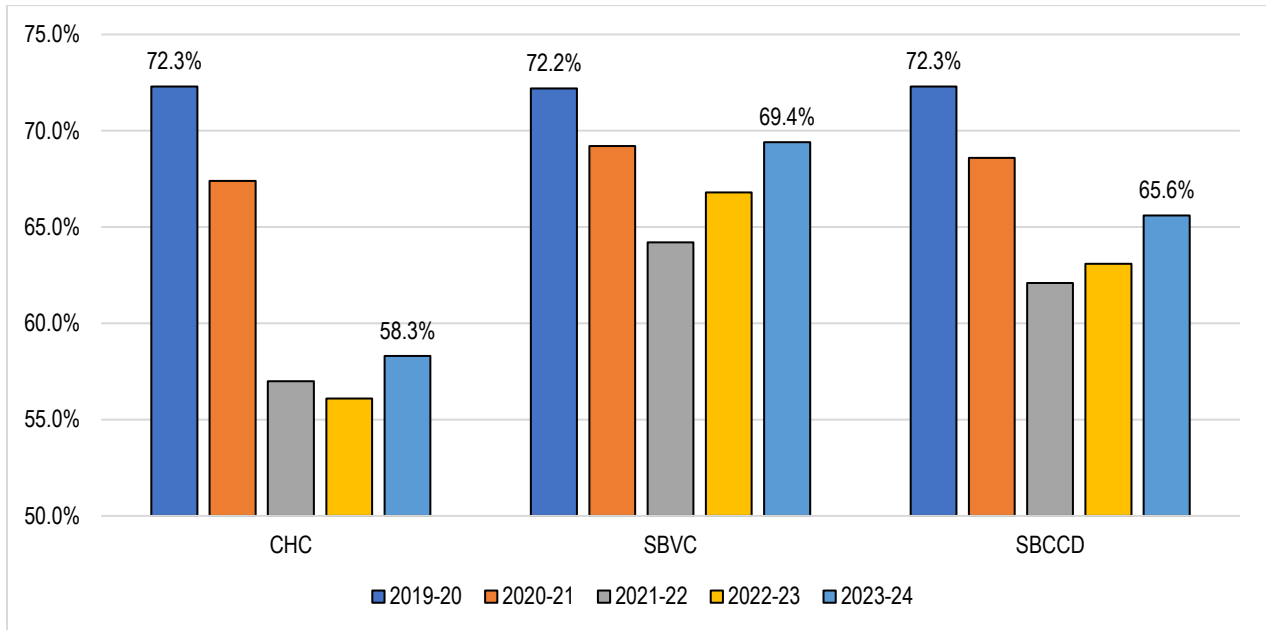
	Nonresident FTES 2019-20	Nonresident FTES 2020-21	Nonresident FTES 2021-22	Nonresident FTES 2022-23	Nonresident FTES 2023-24	5 Year Change	5 Year Average
CHC	157.11	128.30	110.69	118.88	142.70	-9.2%	131.54
SBVC	568.72	438.07	385.27	358.08	463.99	-18.4%	442.83
SBCCD	725.82	566.37	495.96	476.96	606.70	-16.4%	574.36

Source: Internal Executive Information System (EIS)

Between 2019-20 and 2023-24, CHC’s nonresident FTES declined by 9.2%, from 157.11 in 2019-20 to 142.70 in 2023-24, and SBVC’s nonresident FTES also declined by 18.4%, from 568.72 in 2019-20 to 463.99 in 2023-24.



**Fill Rates: 2019-20 Through 2023-24**



Academic Year*	Crafton Hills College			San Bernardino Valley College			SBCCD		
	Capacity	Enrollments	Fill Rate	Capacity	Enrollments	Fill Rate	Capacity	Enrollments	Fill Rate
2019-20	57,580	41,618	72.3%	122,797	88,709	72.2%	180,377	130,327	72.3%
2020-21	53,625	36,130	67.4%	107,069	74,059	69.2%	160,694	110,189	68.6%
2021-22	53,251	30,360	57.0%	100,770	65,242	64.7%	154,021	95,602	62.1%
2022-23	56,244	31,553	56.1%	108,126	72,216	66.8%	164,370	103,769	63.1%
2023-24	64,536	37,617	58.3%	123,257	85,507	69.4%	187,793	123,124	65.6%
<b>Grand Total</b>	<b>285,236</b>	<b>177,278</b>	<b>62.2%</b>	<b>562,019</b>	<b>385,733</b>	<b>68.6%</b>	<b>847,255</b>	<b>563,011</b>	<b>66.5%</b>

Source: Internal Executive Information System (EIS) EIS

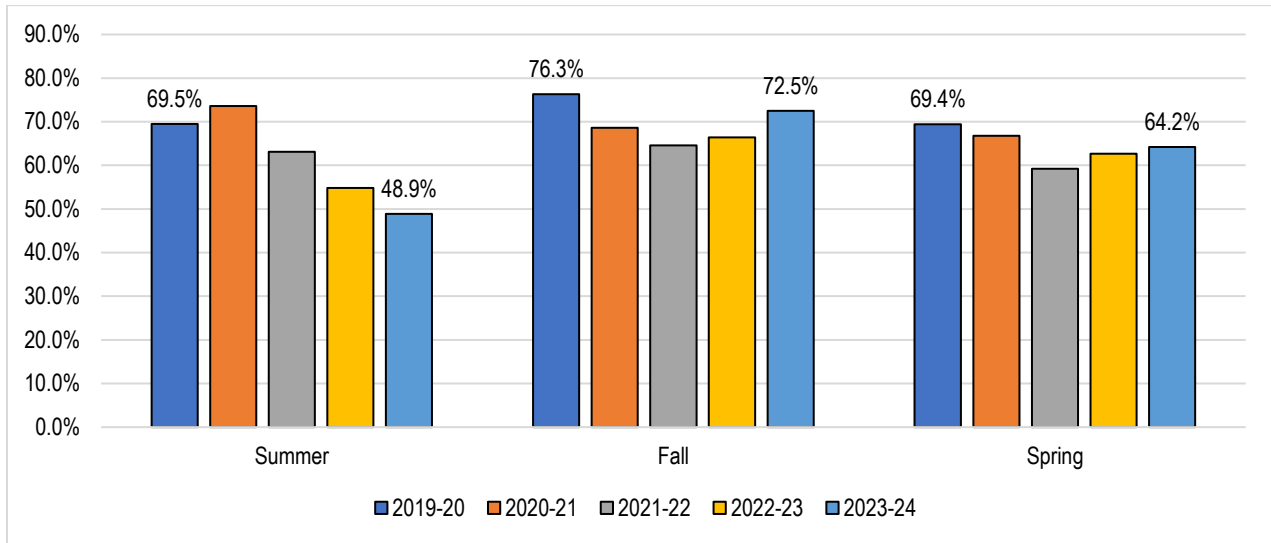
Note: \* based on section's start date not reporting year

Fill Rate is the actual enrollment divided by the potential enrollment (capacity) and refers to the percent of students enrolled at census as determined by the capacity.

On average, between 2019-20 and 2023-24, the fill rate for SBCCD declined by 6.8 percentage points, from 72.3% in 2019-20 to 65.6% in 2023-24, with a five-year average of 66.5%.



**Fill Rates By Terms: 2019-20 Through 2023-24**



	Crafton Hills College			San Bernardino Valley College			SBCCD		
	Capacity	Enrollments	Fill Rate	Capacity	Enrollments	Fill Rate	Capacity	Enrollments	Fill Rate
2019 Summer	6,746	4,646	68.9%	16,838	11,751	69.8%	23,584	16,397	69.5%
2020 Summer	7,072	4,713	66.6%	14,855	11,435	77.0%	21,927	16,148	73.6%
2021 Summer	6,808	3,767	55.3%	15,297	10,173	66.5%	22,105	13,940	63.1%
2022 Summer	9,044	3,444	38.1%	14,308	9,360	65.4%	23,352	12,804	54.8%
2023 Summer	9,839	4,809	48.9%	18,123	13,138	72.5%	27,962	17,947	64.2%
<b>Grand Total</b>	<b>39,509</b>	<b>21,379</b>	<b>54.1%</b>	<b>79,421</b>	<b>55,857</b>	<b>70.3%</b>	<b>118,930</b>	<b>77,236</b>	<b>64.9%</b>

	Crafton Hills College			San Bernardino Valley College			SBCCD		
	Capacity	Enrollments	Fill Rate	Capacity	Enrollments	Fill Rate	Capacity	Enrollments	Fill Rate
2019 Fall	26,598	20,370	76.6%	57,785	44,000	76.1%	84,383	64,370	76.3%
2020 Fall	24,336	16,814	69.1%	48,174	32,953	68.4%	72,510	49,767	68.6%
2021 Fall	23,628	14,190	60.1%	42,283	28,391	67.1%	65,911	42,581	64.6%
2022 Fall	24,311	14,486	59.6%	46,131	32,262	69.9%	70,442	46,748	66.4%
2023 Fall	26,874	16,740	62.3%	52,213	36,594	70.1%	79,087	53,334	67.4%
<b>Grand Total</b>	<b>125,747</b>	<b>82,600</b>	<b>65.7%</b>	<b>246,586</b>	<b>174,200</b>	<b>70.6%</b>	<b>372,333</b>	<b>256,800</b>	<b>69.0%</b>

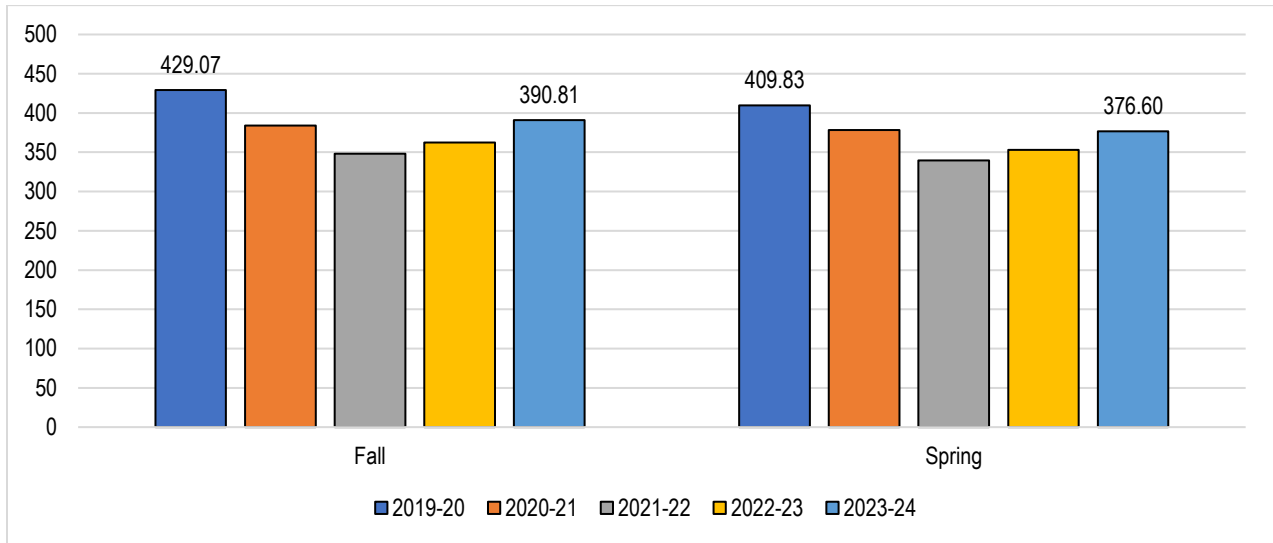
	Crafton Hills			San Bernardino Valley College			SBCCD		
	Capacity	Enrollments	Fill Rate	Capacity	Enrollments	Fill Rate	Capacity	Enrollments	Fill Rate
2020 Spring	24,532	17,626	71.8%	54,298	37,050	68.2%	78,830	54,676	69.4%
2021 Spring	22,217	14,603	65.7%	44,040	29,671	67.4%	66,257	44,274	66.8%
2022 Spring	22,815	12,403	54.4%	43,190	26,678	61.8%	66,005	39,081	59.2%
2023 Spring	22,889	13,623	59.5%	47,687	30,594	64.2%	70,576	44,217	62.7%
2024 Spring	27,823	16,068	57.8%	52,921	35,775	67.6%	80,744	51,843	64.2%
<b>Grand Total</b>	<b>126,616</b>	<b>74,914</b>	<b>59.2%</b>	<b>241,772</b>	<b>161,275</b>	<b>66.7%</b>	<b>368,388</b>	<b>236,189</b>	<b>64.1%</b>

Source: Internal Executive Information System (EIS)

Between 2019-20 and 2023-24, the overall fill rate was highest in Fall (69.0%), compared to Summer (64.9%) and Spring (64.1%). Fill rates decreased for Spring (from 69.4% in 2019-20 to 64.2% in 2023-24), decreased for Fall (from 76.3% in 2019-20 to 67.4% in 2023-24), and decreased for Summer (from 69.5% in 2019-20 to 64.2% in 2023-24).



**Efficiency: Weekly Student Contact Hours (WSCH) and Full-Time Equivalent Faculty (FTEF)**



	Crafton Hills College			San Bernardino Valley College			SBCCD		
	WSCH	FTEF	WSCH/ FTEF	WSCH	FTEF	WSCH/ FTEF	WSCH	FTEF	WSCH/ FTEF
2019 Fall	69,485	153.529	452.59	158,569	377.977	419.52	228,054	531.506	429.07
2020 Fall	62,971	144.791	434.91	123,655	341.255	362.35	186,626	486.046	383.97
2021 Fall	52,760	135.169	390.33	105,724	319.974	330.41	158,484	455.143	348.21
2022 Fall	53,021	139.804	379.25	114,049	320.960	355.34	167,070	460.764	362.59
2023 Fall	59,606	136.929	435.31	132,377	354.311	373.62	191,983	491.240	390.81
<b>Grand Total</b>	<b>297,843</b>	<b>710.222</b>	<b>419.37</b>	<b>634,374</b>	<b>1,714.477</b>	<b>370.01</b>	<b>932,217</b>	<b>2,424.699</b>	<b>384.47</b>

	Crafton Hills College			San Bernardino Valley College			SBCCD		
	WSCH	FTEF	WSCH/ FTEF	WSCH	FTEF	WSCH/ FTEF	WSCH	FTEF	WSCH/ FTEF
2020 Spring	60,950	144.773	421.00	146,336	361.006	405.36	207,286	505.779	409.83
2021 Spring	55,813	132.529	421.14	116,932	324.297	360.57	172,745	456.826	378.14
2022 Spring	46,961	131.414	357.35	103,305	311.237	331.92	150,267	442.651	339.47
2023 Spring	48,872	128.101	381.51	112,085	327.662	342.08	160,957	455.763	353.16
2024 Spring	56,522	139.202	406.05	131,758	360.745	365.24	188,281	499.947	376.60
<b>Grand Total</b>	<b>269,118</b>	<b>676.019</b>	<b>398.09</b>	<b>610,416</b>	<b>1,684.947</b>	<b>362.28</b>	<b>879,536</b>	<b>2,360.966</b>	<b>372.53</b>

Source: Internal Executive Information System (EIS)

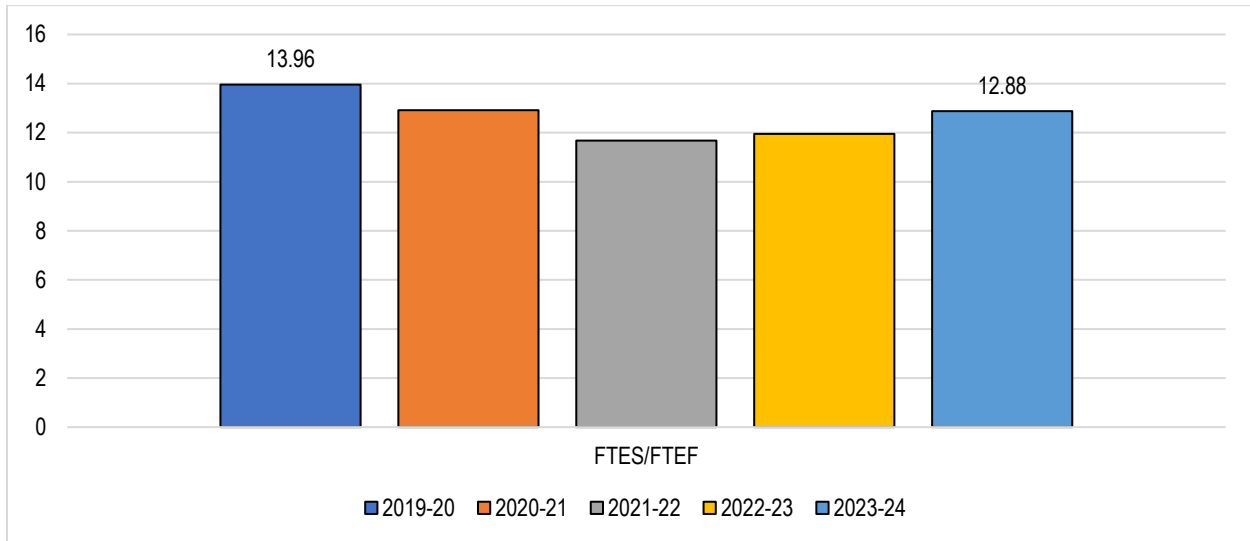
WSCH/FTEF shows the relationship between Weekly Student Contact Hours (WSCH) and Full-Time Equivalent Faculty (FTEF). This measure is used as an indicator of instructional efficiency. The ratio, WSCH per FTEF, could be interpreted in terms of cost-efficiency or instructional quality.

Between 2019-20 and 2023-24, the Fall WSCH/FTEF values for SBCCD decreased from 429.07 in Fall 2019 to 390.81 in Fall 2023, a 8.9% decrease. The Spring WSCH/FTEF values also declined from 409.83 in Spring 2019 to 376.60 in Spring 2024, a 8.1% decrease.





**Efficiency: Full-Time Equivalent Students (FTES) and Full-Time Equivalent Faculty (FTEF)**



Academic Year*	Crafton Hills College			San Bernardino Valley College			SBCCD		
	FTES	FTEF	FTES/FTEF	FTES	FTEF	FTES/FTEF	FTES	FTEF	FTES/FTEF
2019-20	4,918.22	333.64	14.74	10,817.11	823.37	13.14	16,427.58	1176.74	13.96
2020-21	4,513.18	314.07	14.37	9,417.55	763.89	12.33	13,930.73	1077.96	12.92
2021-22	3,769.66	301.47	12.50	8,337.41	735.75	11.33	12,107.07	1037.22	11.67
2022-23	3,793.77	306.379	12.38	8,761.54	744.234	11.77	12,555.31	1050.613	11.95
2023-24	4,388.44	316.098	13.88	10,416.77	833.056	12.50	14,805.21	1149.154	12.88
<b>Grand Total</b>	<b>21,383.27</b>	<b>1,571.66</b>	<b>13.61</b>	<b>47,750.38</b>	<b>3,900.30</b>	<b>12.24</b>	<b>69,825.90</b>	<b>5,491.69</b>	<b>12.71</b>

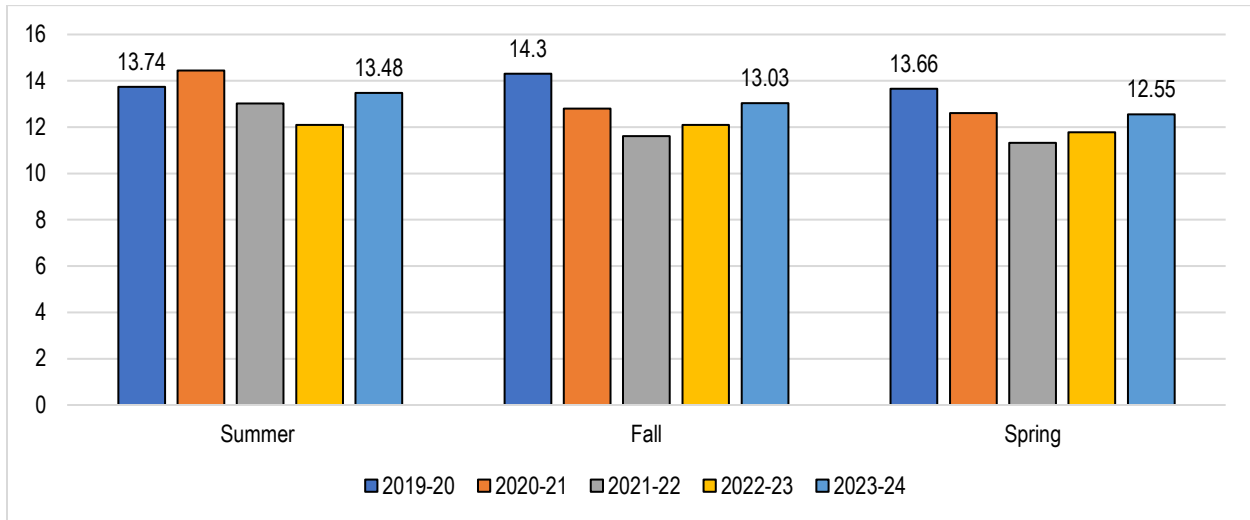
Source: Internal Executive Information System (EIS)  
 Note: \* based on section's start date not reporting year

The FTES per FTEF ratio shows the number of full-time equivalent students (FTES) served by each full-time equivalent faculty (FTEF). This measure is used as an indicator of institutional efficiency for fiscal responsibility. An FTES/FTEF Ratio of 17.5 is the equivalent of the WSCH/FTEF ratio of 525 and means that the college/district served 17.5 full-time students for every one full-time faculty.

Between 2019-20 and 2023-24, the FTES/FTEF for SBCCD declined from 13.96 in 2019-20 to 12.88 in 2023-24, a 7.7% decrease. The FTES/FTEF for CHC declined from 14.74 in 2019-20 to 13.88 in 2023-24, a 4.9% decrease. The FTES/FTEF for SBVC declined from 13.14 in 2019-20 to 12.50 in 2023-24, a 10.8% decrease.



**Efficiency By Terms: FTES, FTEF, FTES/FTEF Ratio**



	Crafton Hills College			San Bernardino Valley College			SBCCD		
	FTES	FTEF	FTES/FTEF	FTES	FTEF	FTES/FTEF	FTES	FTEF	FTES/FTEF
2019 Summer	507.18	35.32	14.36	1,409.08	104.14	13.53	1,916.27	139.45	13.74
2020 Summer	553.70	36.75	15.07	1,397.99	98.34	14.22	1,951.69	135.08	14.45
2021 Summer	445.62	34.89	12.77	1,369.75	104.54	13.10	1,815.37	139.42	13.02
2022 Summer	397.36	38.47	10.33	1,223.73	95.61	12.8	1,621.08	134.09	12.09
2023 Summer	517.48	39.97	12.95	1612.26	118.00	13.66	2129.75	157.97	13.48
<b>Grand Total</b>	<b>2,421.34</b>	<b>185.40</b>	<b>13.06</b>	<b>7,012.81</b>	<b>520.62</b>	<b>13.47</b>	<b>9,434.16</b>	<b>706.01</b>	<b>13.36</b>

Source: Internal Executive Information System (EIS)

	Crafton Hills College			San Bernardino Valley College			SBCCD		
	FTES	FTEF	FTES/FTEF	FTES	FTEF	FTES/FTEF	FTES	FTEF	FTES/FTEF
2019 Fall	2,316.16	153.53	15.09	5285.62	377.98	13.98	7601.79	531.51	14.30
2020 Fall	2,099.03	144.79	14.50	4,121.84	341.26	12.08	6,220.87	486.05	12.80
2021 Fall	1,758.66	135.17	13.01	3,524.14	319.97	11.01	5,282.80	455.14	11.61
2022 Fall	1,767.36	139.80	12.64	3,801.65	320.96	11.84	5,569.00	460.76	12.09
2023 Fall	1986.88	136.93	14.51	4412.56	354.31	12.45	6399.44	491.24	13.03
<b>Grand Total</b>	<b>9,928.09</b>	<b>710.22</b>	<b>13.98</b>	<b>21,145.81</b>	<b>1,714.48</b>	<b>12.33</b>	<b>31,073.90</b>	<b>2,424.70</b>	<b>12.82</b>

Source: Internal Executive Information System (EIS)

	Crafton Hills College			San Bernardino Valley College			SBCCD		
	FTES	FTEF	FTES/FTEF	FTES	FTEF	FTES/FTEF	FTES	FTEF	FTES/FTEF
2020 Spring	2031.65	144.77	14.03	4877.87	361.01	13.51	6909.52	505.78	13.66
2021 Spring	1,860.44	132.53	14.04	3,897.73	324.3	12.02	5,758.17	456.83	12.60
2022 Spring	1,565.38	131.41	11.91	3,443.52	311.24	11.06	5,008.90	442.65	11.32
2023 Spring	1,629.06	128.10	12.72	3,736.17	327.66	11.4	5,365.23	455.76	11.77
2024 Spring	1884.08	139.20	13.53	4391.95	360.75	12.17	6276.02	499.95	12.55
<b>Grand Total</b>	<b>8970.61</b>	<b>676.01</b>	<b>13.27</b>	<b>20347.24</b>	<b>1684.96</b>	<b>12.08</b>	<b>29317.84</b>	<b>2360.97</b>	<b>12.42</b>

Source: Internal Executive Information System (EIS)