

Energy Conservation Program Initial Board Report

JUNE 2012 – AUGUST 2013



Primary Goals

- Save dollars
- Maintain and improve comfort and safety
- Eliminate energy waste
- Create a positive educational environment
- Achieve an “energy conservation culture”

Energy Savings to Date:

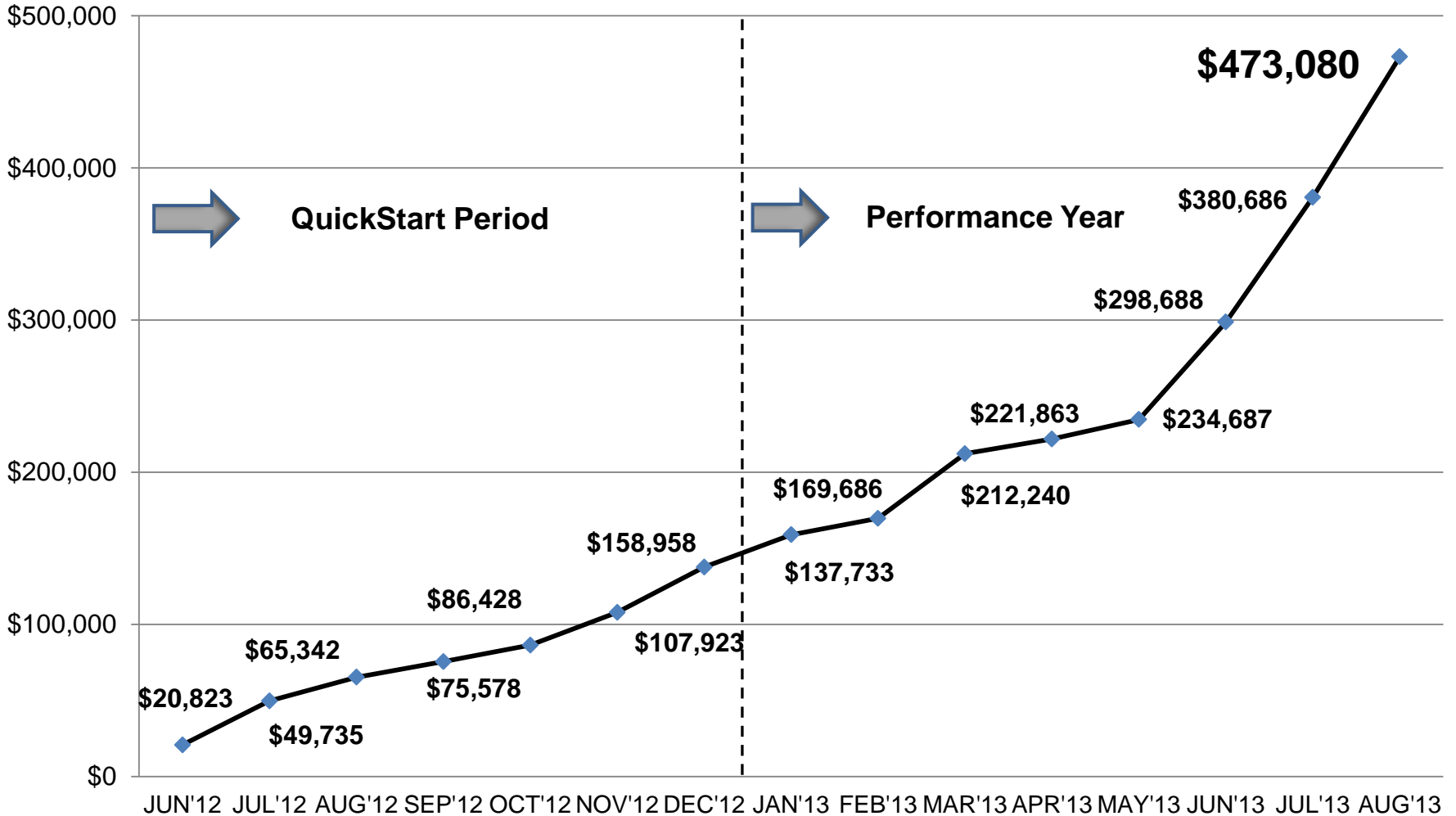
\$473,080

16.7%⁽¹⁾

(1) PERFORMANCE YEAR ONE, YEAR-TO-DATE, JANUARY 2013—AUGUST 2013

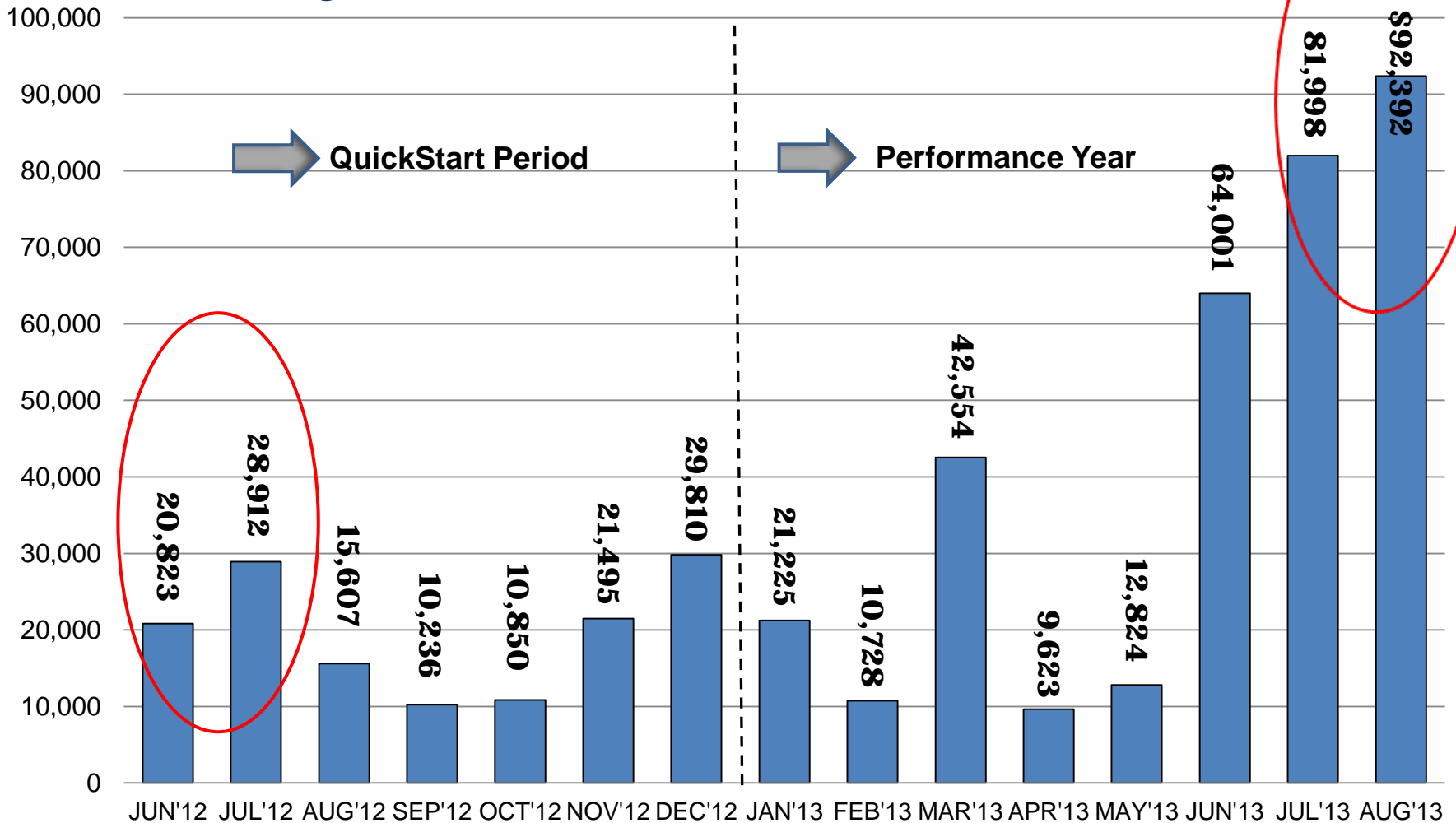
Monthly Savings Trend

Total Savings: \$473,080



Monthly Savings

Total Savings: \$473,080

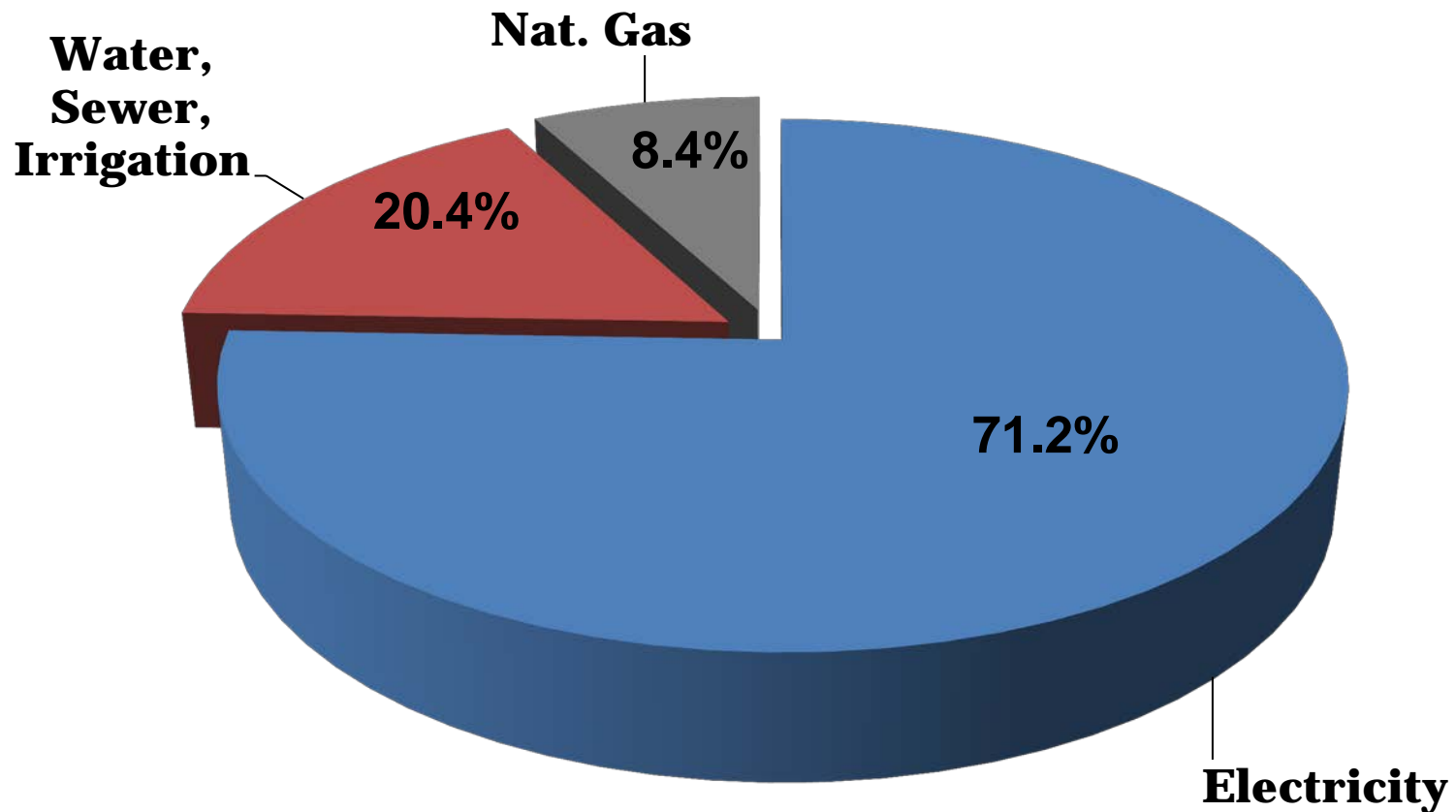


A Day in the Life of an Energy Specialist

- Perform 20-25 unoccupied and occupied audits per week – over 1,000 audits to date
- One-on-one training with Cenergistic staff
- Over 75 on-site visits from Cenergistic Engineers and Consultants to date
- Program EMS and work with Maintenance Team
- Match conditioning times to occupied times
- Strategic planning for extended breaks
- Continuous communication to teachers and staff
- Promote an “energy conservation culture”
- Continually assess and reassess the program

Utility Cost Distribution

September 2012 – August 2013



Total Utility Spend: \$3.9MM

Electrical Comparison

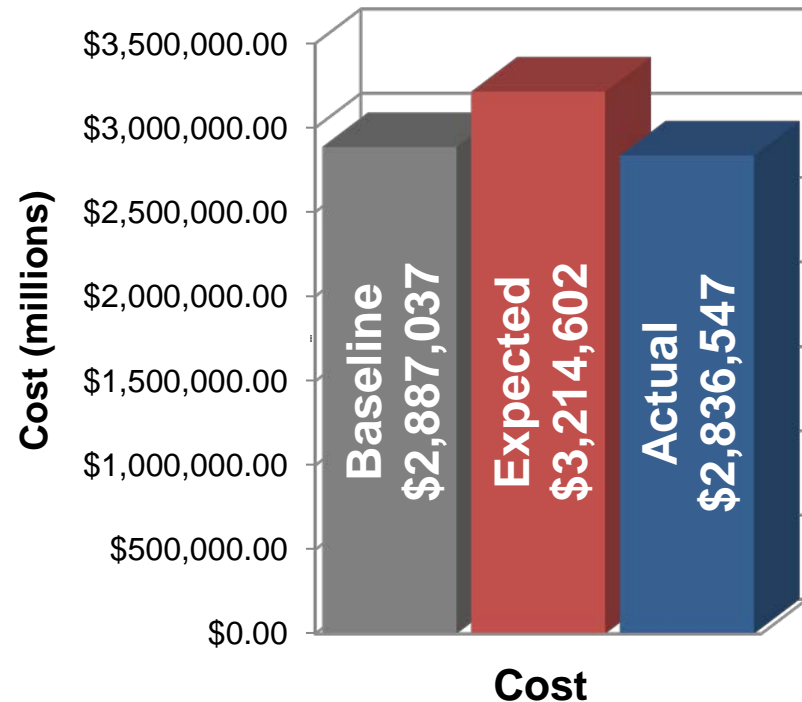
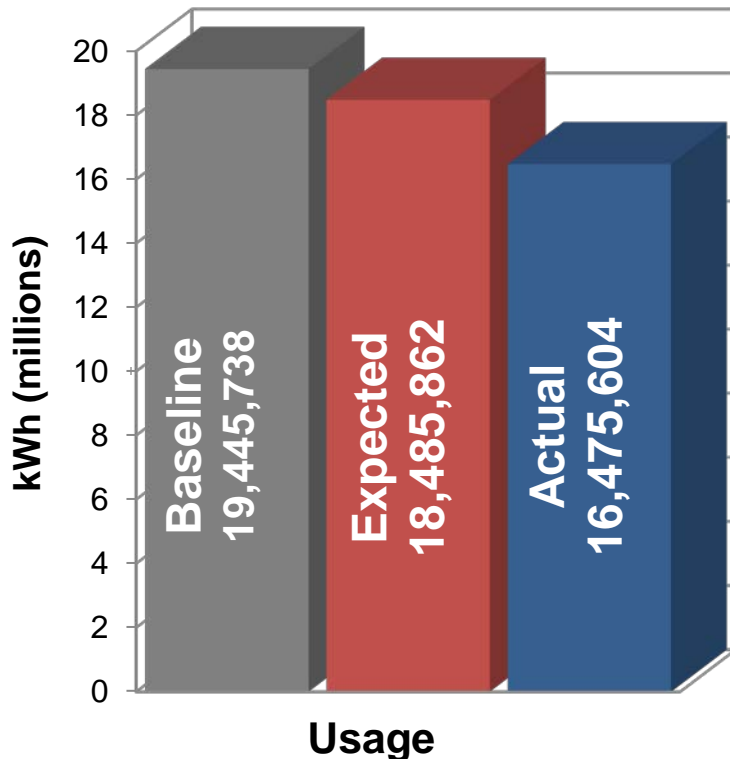
JUNE 2012–AUGUST 2013

Total Avoided Use

1,983,258 kWh

Total Avoided Cost

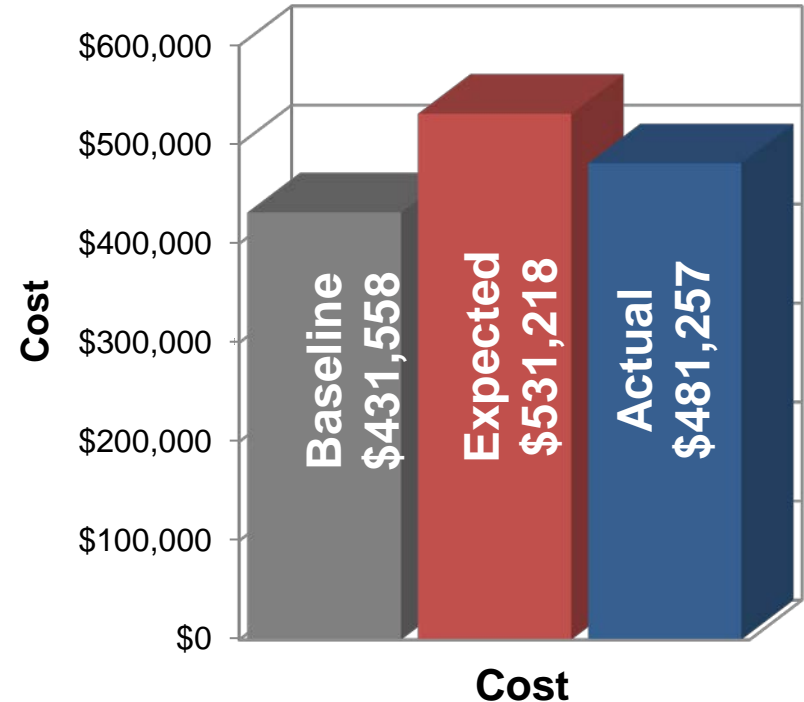
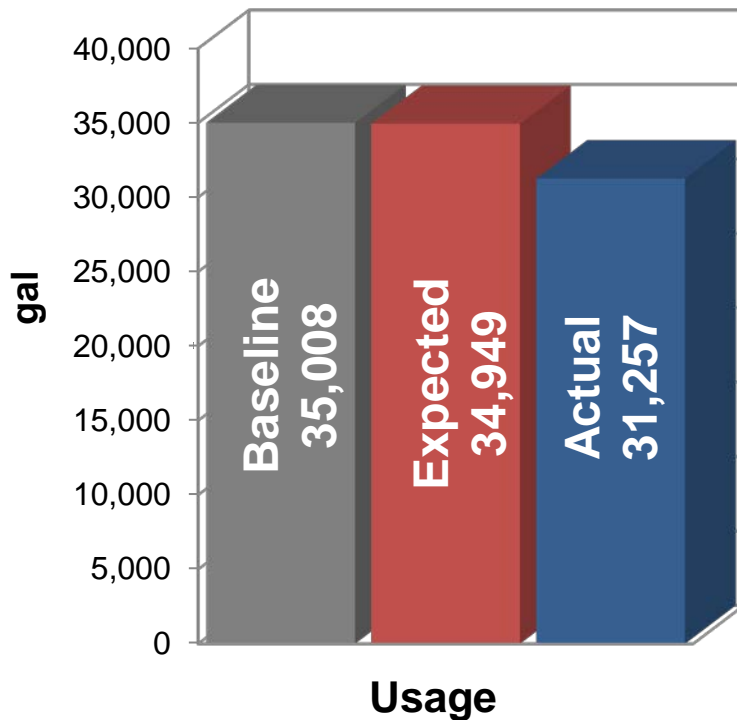
\$378,055



Water-Sewer Comparison

JUNE 201

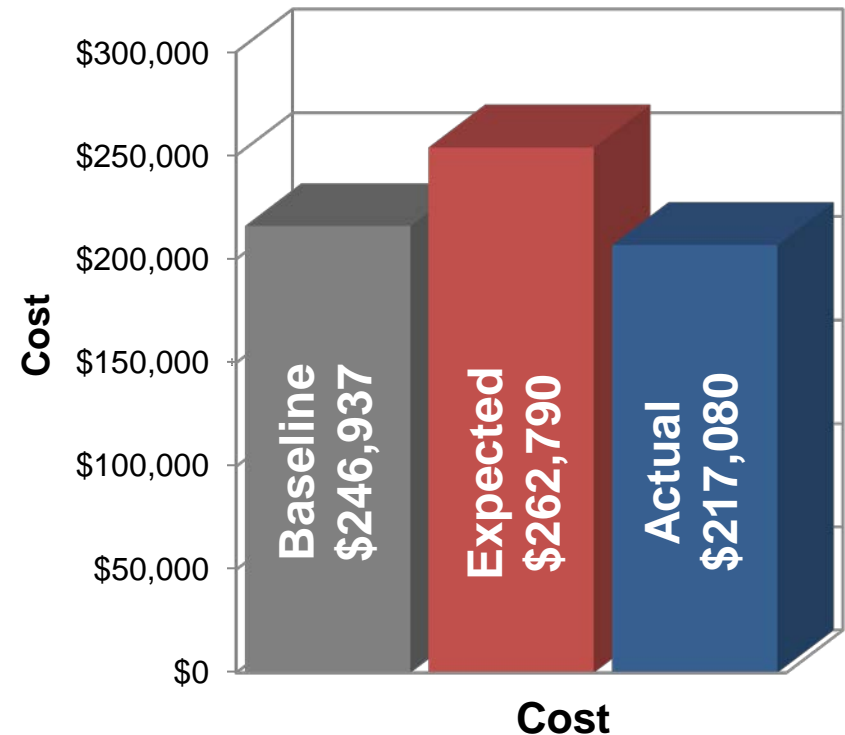
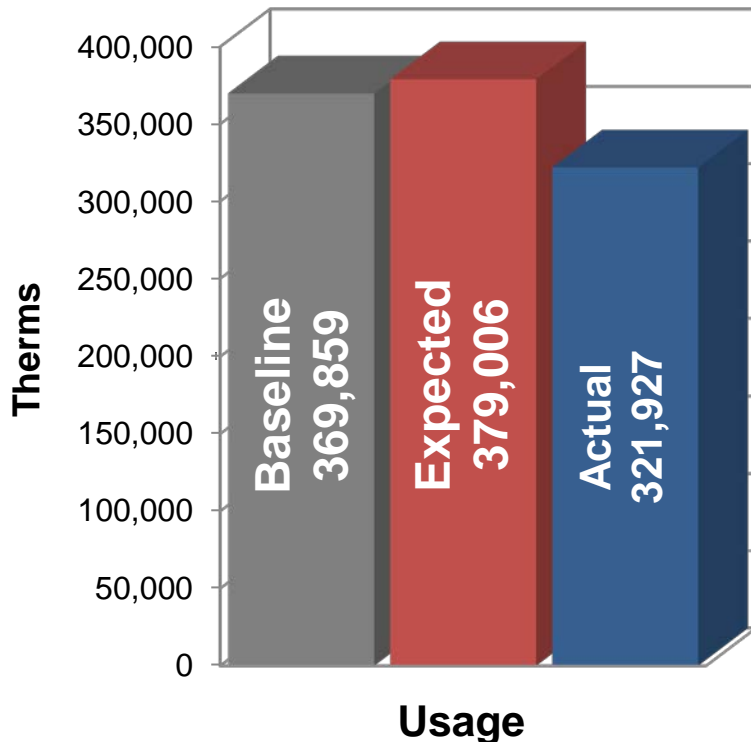
Total Avoided Use	3,691 kGal
Total Avoided Cost	\$49,960



Natural Gas Comparison

AUGUST 2012–SEPTEMBER 2013

Total Avoided Use **57,079 Therms**
Total Avoided Cost **\$45,710**



Environmental Benefits

We have saved over:

- 1.983 million kWh of Electricity
- 57.08 thousand therms of Natural Gas

These savings equate to:

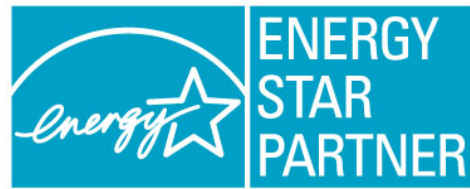
- Preventing 801 Metric Tons of CO₂
- Removing 167 automobiles for an entire year
- 20,529 tree seedlings grown for 10 years

Specific Accomplishments

- Summer and school break shutdown of facilities communicated with staff and verified according to San Bernardino Community College District policy and guidelines.
- Initiated additional energy-saving culture changes across district
- Daily changes in lighting and computer control emphasized and audited by Ms. Diaz.

The Future of Our Energy Program

- Applying for ENERGY STAR building recognition
- Energy Management System training
- Prepare for winter break shutdowns
- Continue developing an “energy conservation culture”
- Continue working to identify energy conservation, efficiency and renewable energy measures



Teamwork

The success of the program depends on everyone!

Special thanks go to:

- **District Board of Trustees**
- **Chancellor Baron**
- **District Administrators & Staff**
- **Community**
- **Maintenance/Custodial Staff**
- **Faculty**
- **Staff**

Questions



San Bernardino Community College District Redistricting Plan Recommendation



NAACP San Bernardino Branch
December 2013



NAACP SAN BERNARDINO BRANCH

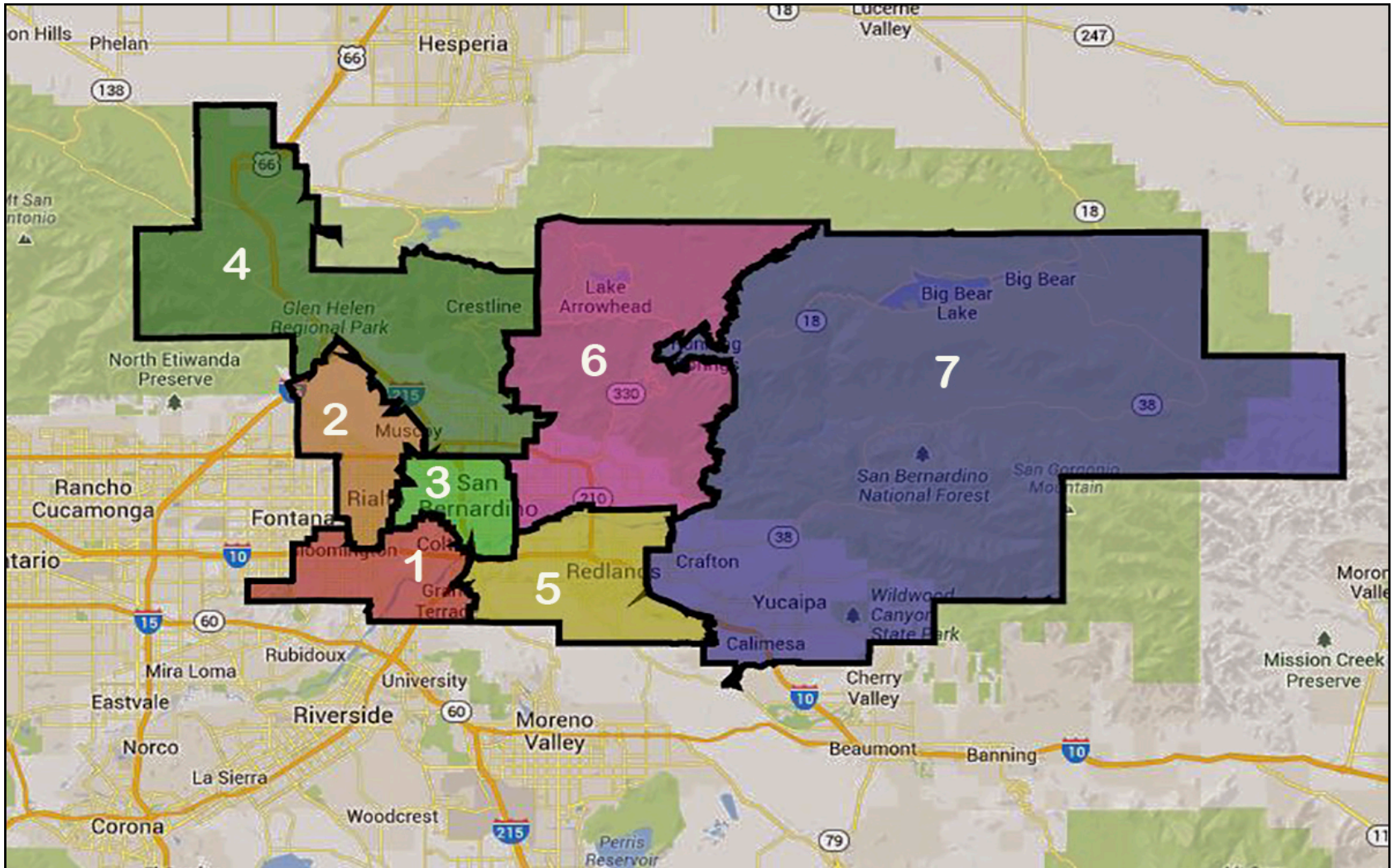
The court approved criteria that have been used to review the three plans are based on Federal and California voting rights laws:

- One person, One vote (relatively equal population)
- Contiguous districts (not gerrymandered)
- Compact districts (visual review & compactness formula)
- Maximize Hispanic & African American influence districts
- Maintain boundaries of cities and local governments
- Maintain communities of interest
- Preserve voter choices (incumbents)



NAACP SAN BERNARDINO BRANCH

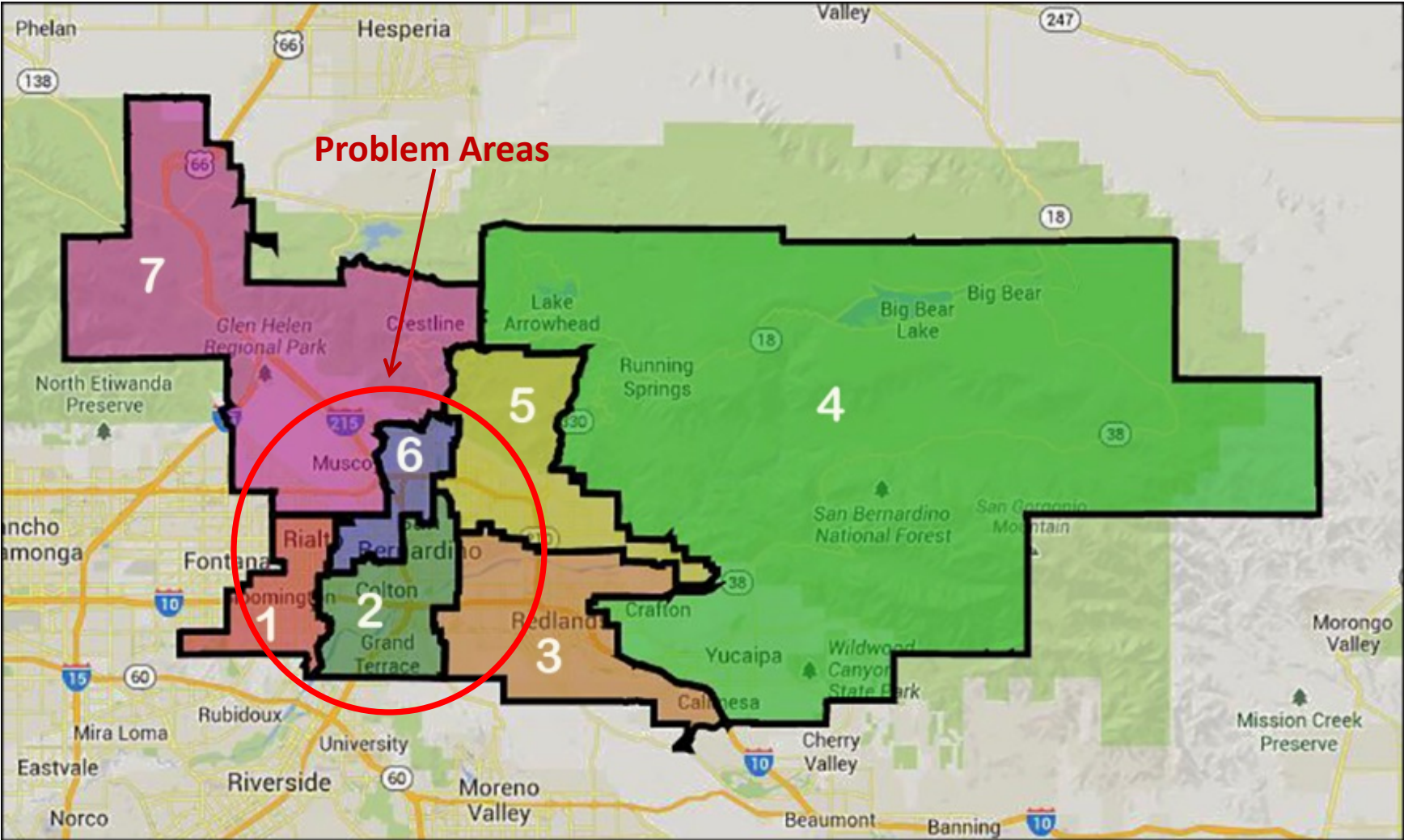
Plan 1 best maximizes all of the redistricting criteria





NAACP SAN BERNARDINO BRANCH

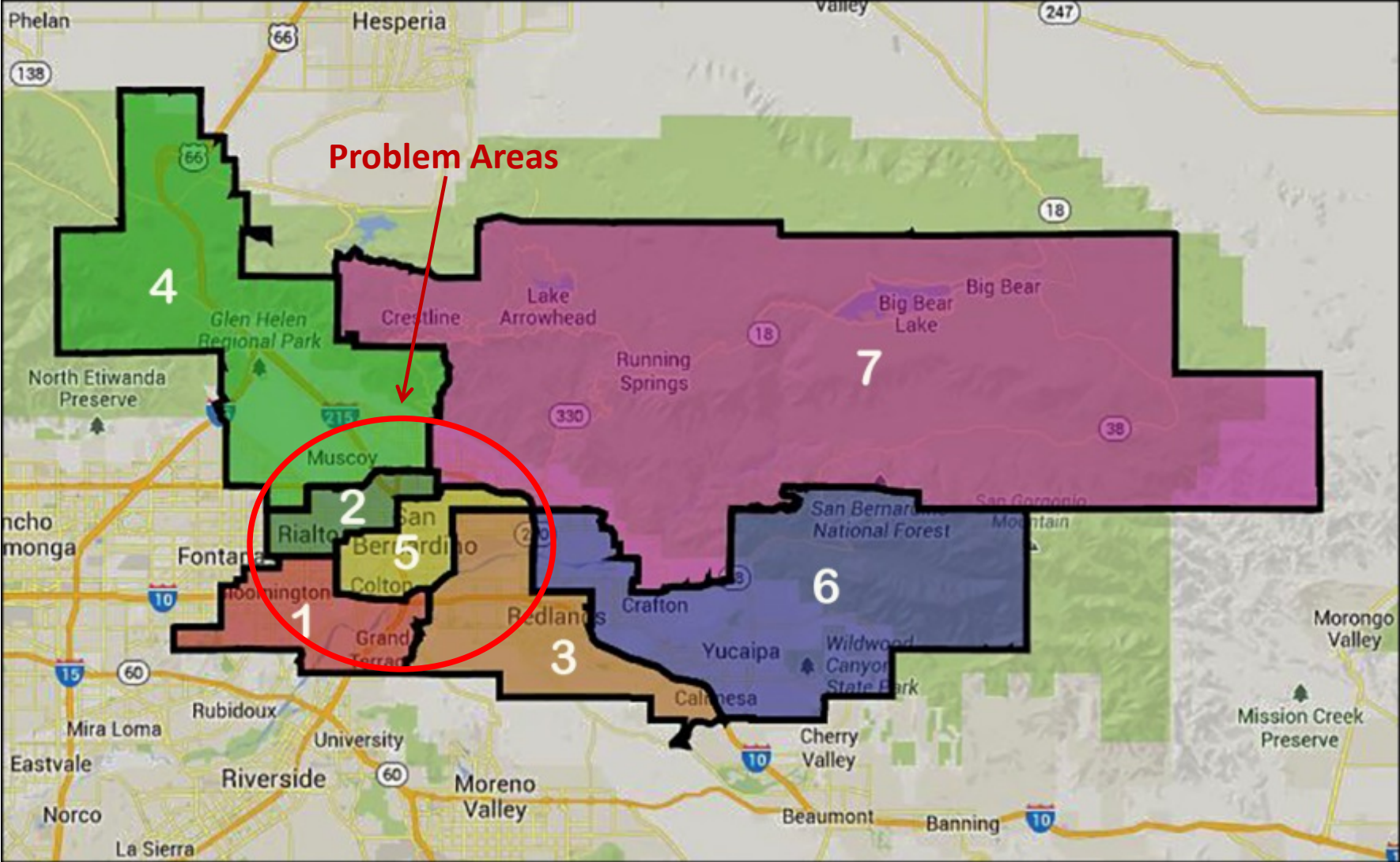
Plan 2





NAACP SAN BERNARDINO BRANCH

Plan 3





NAACP SAN BERNARDINO BRANCH

We recommend that the San Bernardino Community College District adopts Plan 1.

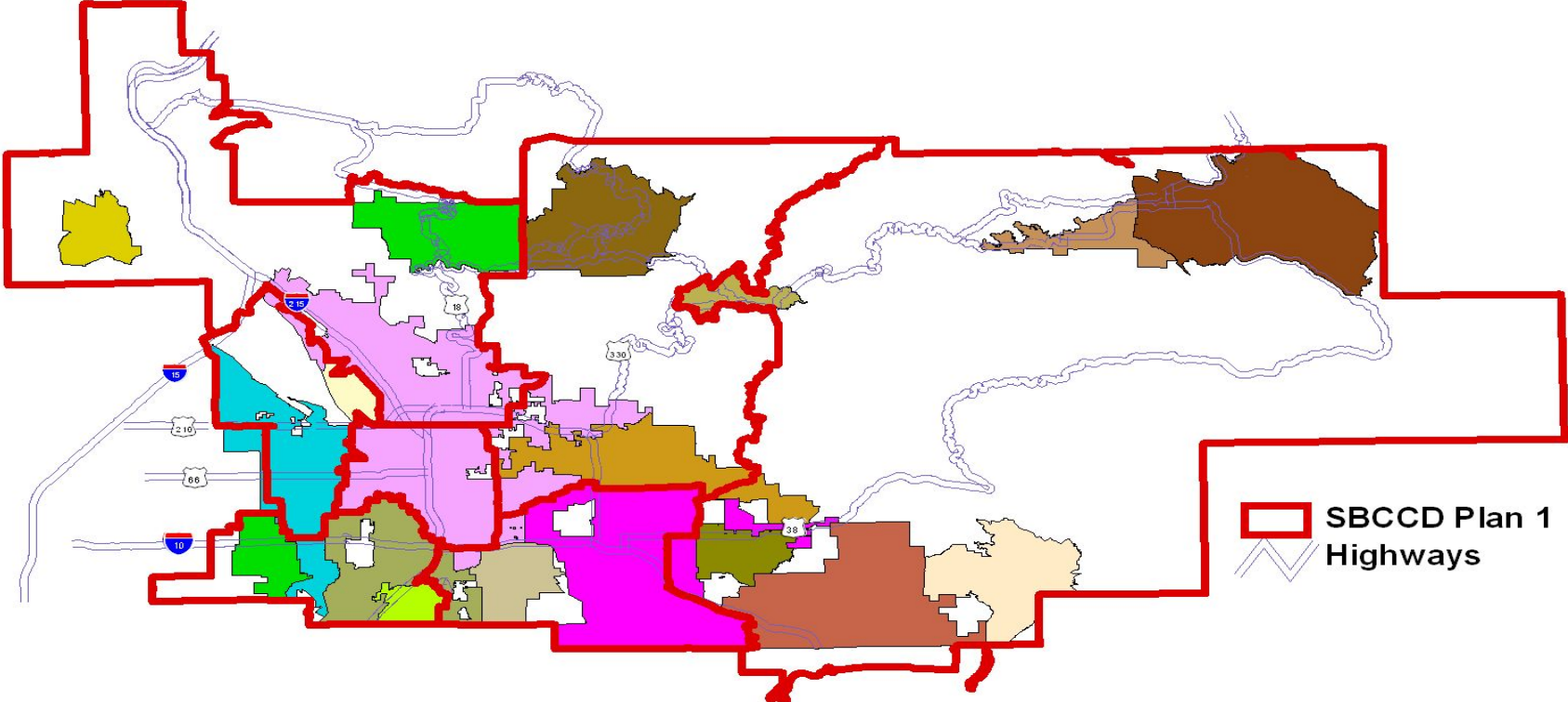
This plan:

- Maintains the lowest population deviation ,
- Creates 3 Majority-Minority districts (districts 1, 2, and 3),
- Creates the fewest splits and no gerrymandered districts,
- Maintains three mountain districts,
- Maintains the natural geographic and socio-economic communities of interest that currently exist.



NAACP SAN BERNARDINO BRANCH

Plan 1 - City Boundary View



Plan 1 makes the most appropriate splits of city and neighborhood boundaries. More communities of interest are also maintained.





NAACP SAN BERNARDINO BRANCH

SAN BERNARDINO COMMUNITY COLLEGE DISTRICT REDISTRICTING PLANS

PLAN 1										
District	Population	White Pct.	Black Pct.	Asian Pct.	Hispanic Pct.	CVAP Total	CVAP Asian Pct.	CVAP Black Pct.	CVAP White Pct.	CVAP Hispanic Pct.%
1	100,772	49%	7%	4%	72%	52,924	4%	9%	25%	60%
2	103,696	44%	15%	2%	68%	52,272	3%	20%	24%	51%
3	102,632	42%	14%	2%	73%	44,437	3%	22%	16%	57%
4	103,244	54%	13%	3%	47%	60,949	3%	14%	46%	36%
5	101,103	58%	7%	15%	31%	67,126	11%	6%	55%	24%
6	97,403	56%	12%	6%	44%	56,798	5%	13%	50%	29%
7	102,268	80%	2%	3%	25%	69,135	2%	2%	77%	16%
TOTAL	711,118					403,641				



NAACP SAN BERNARDINO BRANCH

SAN BERNARDINO COMMUNITY COLLEGE DISTRICT REDISTRICTING PLANS

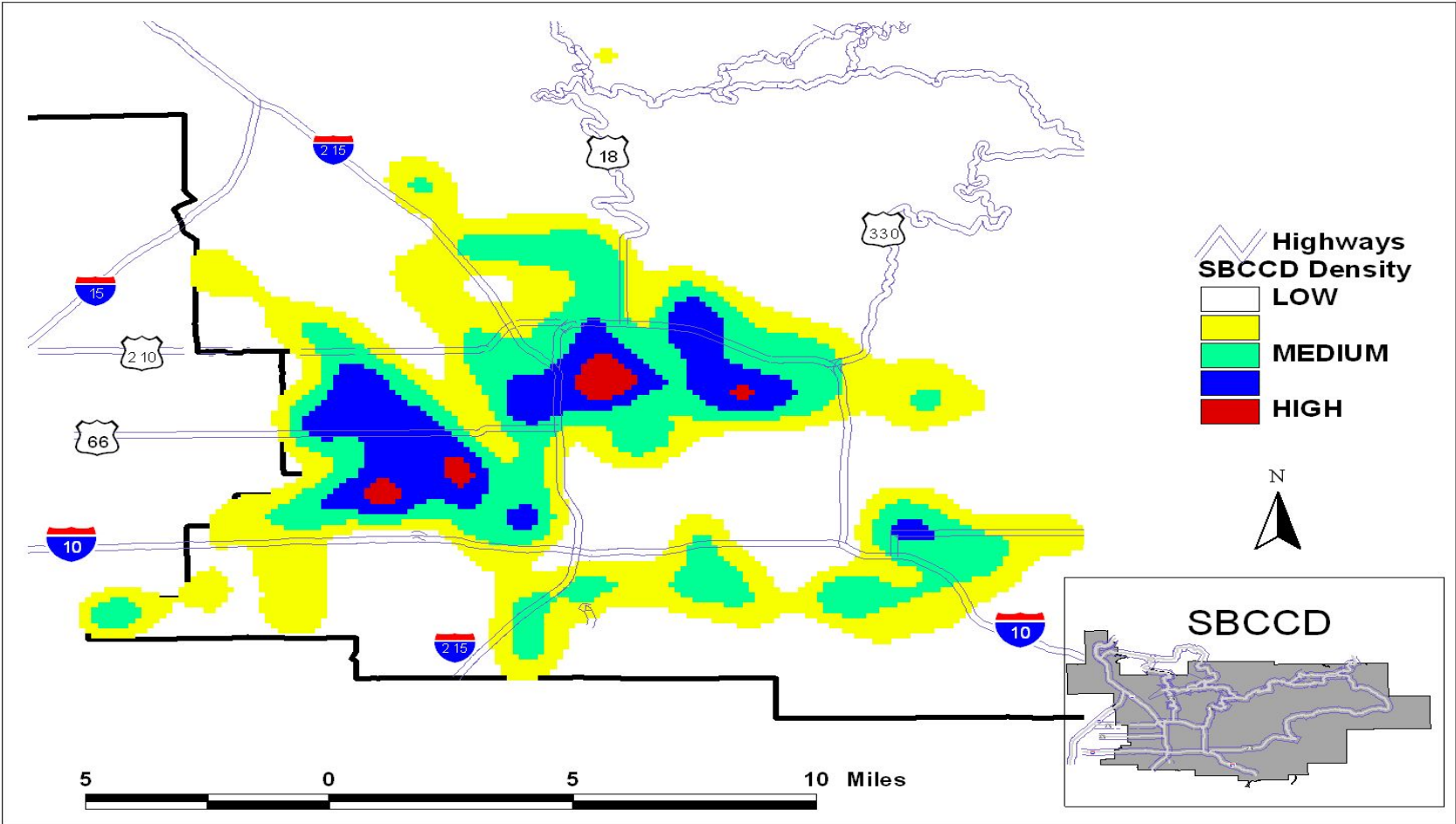
PLAN 1										
District	Population	White	Black	Asian	Hispanic	CVAP	CVAP Asian	CVAP Black	CVAP White	CVAP Hispanic
1	100,772	49,378	7,054	4,031	72,556	49,080	2,117	4,763	13,231	31,754
2	103,696	45,626	15,554	2,074	70,513	50,653	1,568	10,454	12,545	26,659
3	102,632	43,105	14,368	2,053	74,921	64,024	1,333	9,776	7,110	25,329
4	103,244	55,752	13,422	3,097	48,525	72,808	1,828	8,533	28,037	21,942
5	101,103	58,640	7,077	15,165	31,342	59,309	7,384	4,028	36,919	16,110
6	97,403	54,546	11,688	5,844	42,857	53,184	2,840	7,384	28,399	16,471
7	102,268	81,814	2,045	3,068	25,567	54,583	1,383	1,383	53,234	11,062
TOTAL	711,118	388,862	71,210	35,332	366,281	403,641	18,453	46,321	179,475	149,327



NAACP SAN BERNARDINO BRANCH

There are three primary total population clusters in the SDCCB:
1) Rialto/North Colton 2) West & East San Bernardino divided by I-215, and 3) Highland.

SBCCD Population Concentration

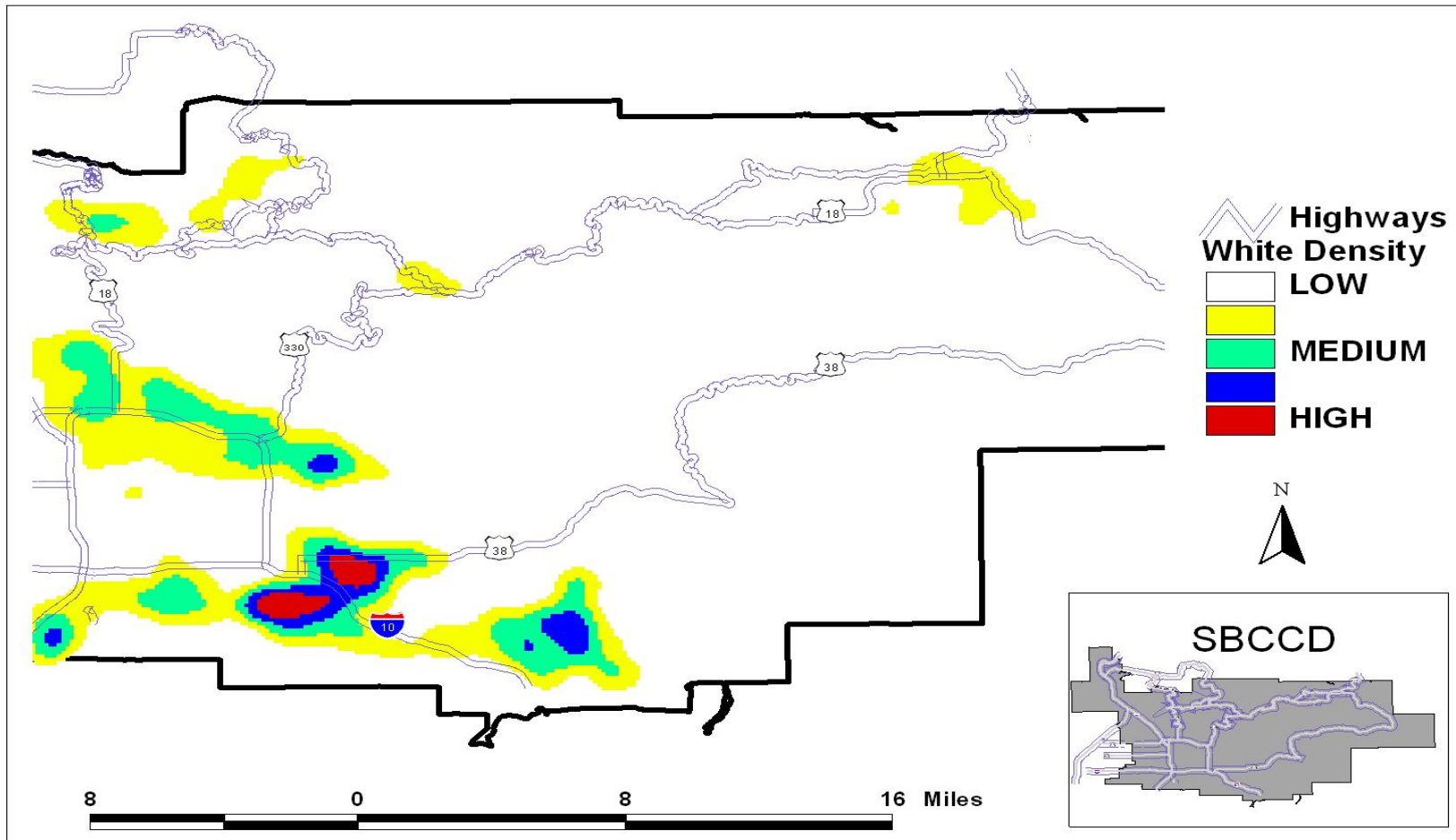




NAACP SAN BERNARDINO BRANCH

The White population in the SBCCD is highly concentrated in two contiguous clusters in Redlands. There are also concentrations in Yucaipa, Highland, Grand Terrace and four less dense areas in the mountain communities.

SBCCD White Population Concentration

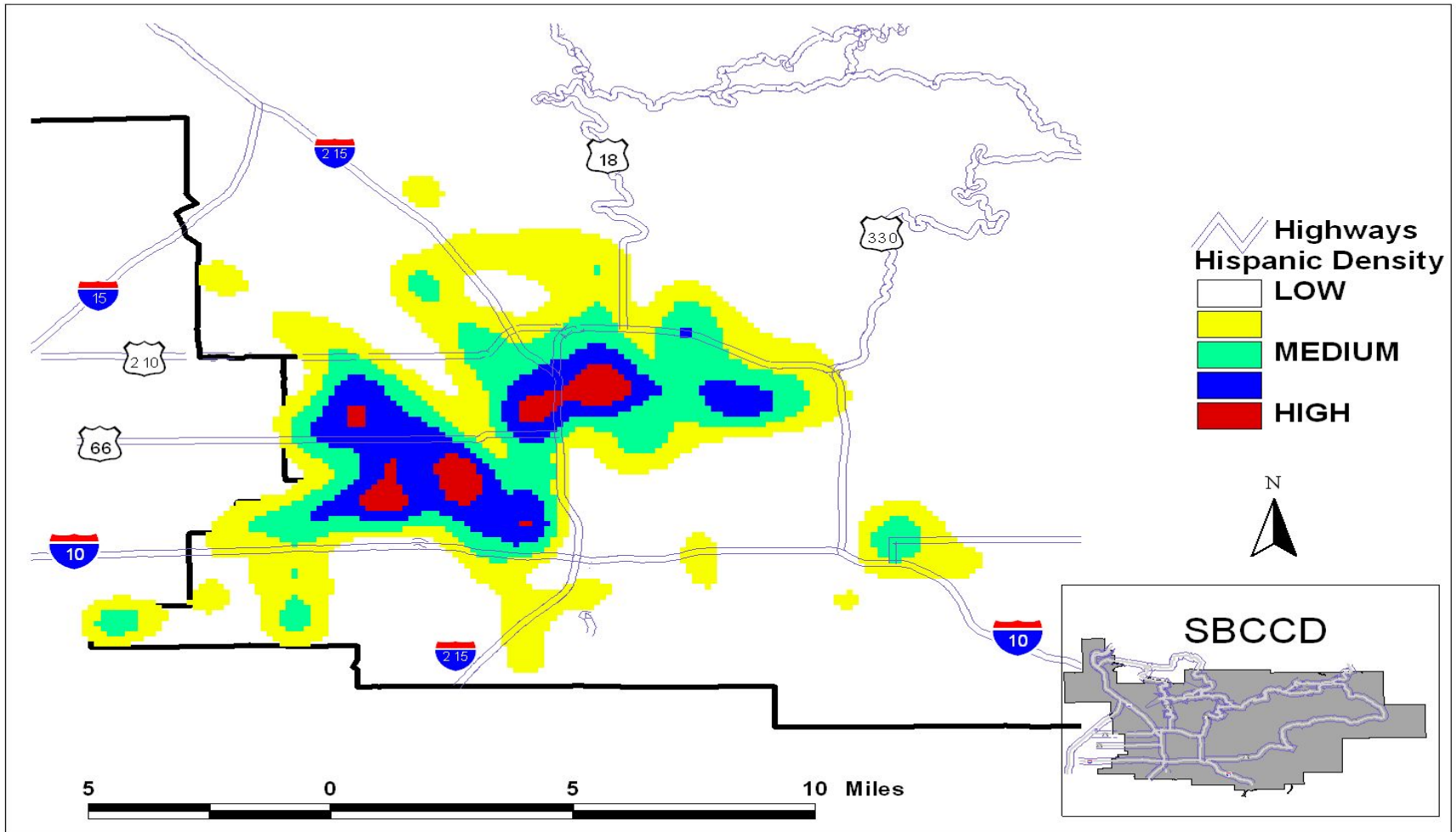




NAACP SAN BERNARDINO BRANCH

Hispanics are concentrated in two primary contiguous clusters: 1) Rialto/Colton/San Bernardino and 2) San Bernardino ZIP Code 92411 and East of I-215 to Waterman Avenue between E. 29th Street and E. 7th Street.

SBCCD Hispanic Population Concentration

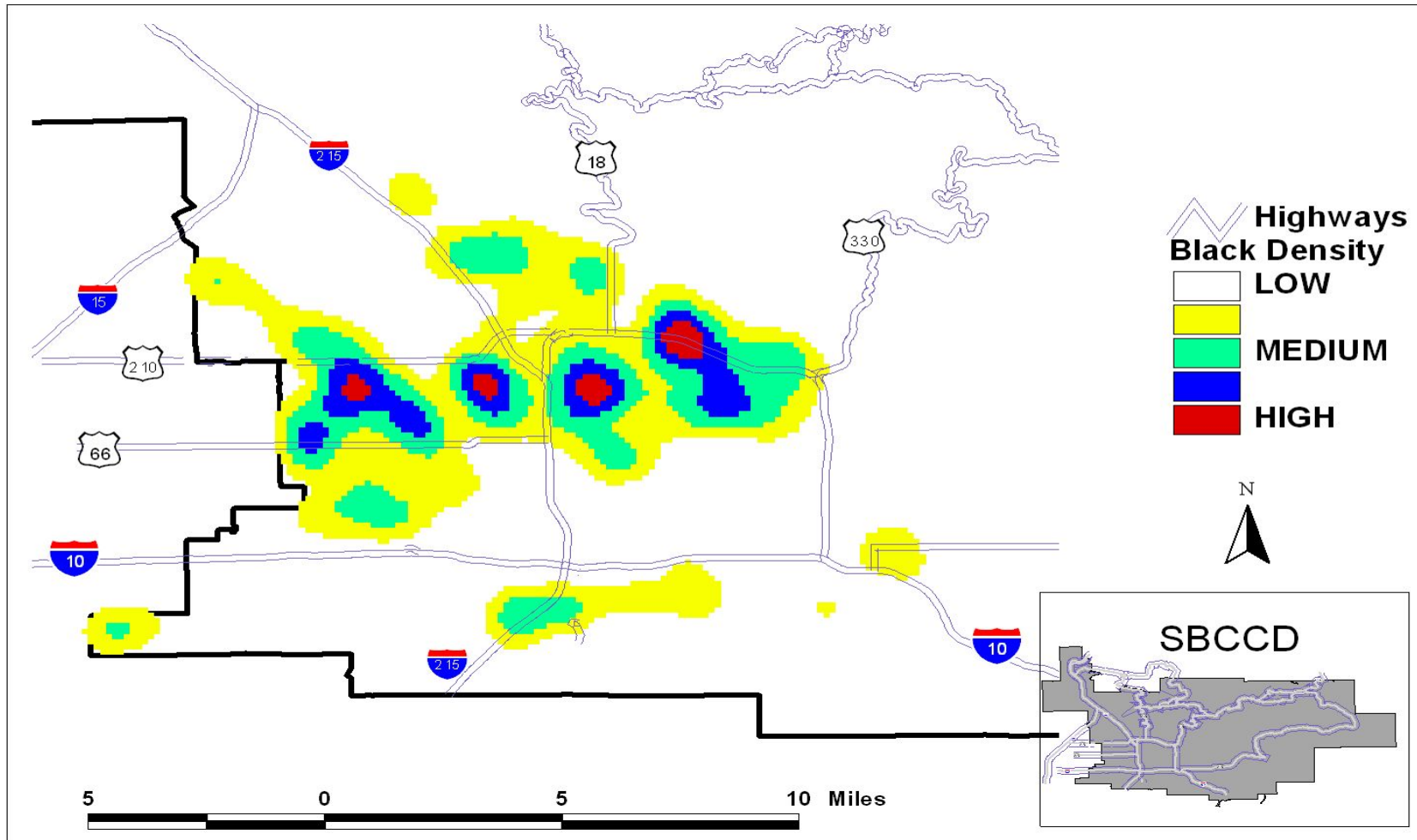




NAACP SAN BERNARDINO BRANCH

The African American “Corridor” based in the **Ebony Triangle**, Central San Bernardino, and the Del Rosa area. This corridor is primarily bounded by the I-210 freeway on the North and Foothill Blvd./5th Street on the South.

SBCCD Black Population Concentration





NAACP SAN BERNARDINO BRANCH

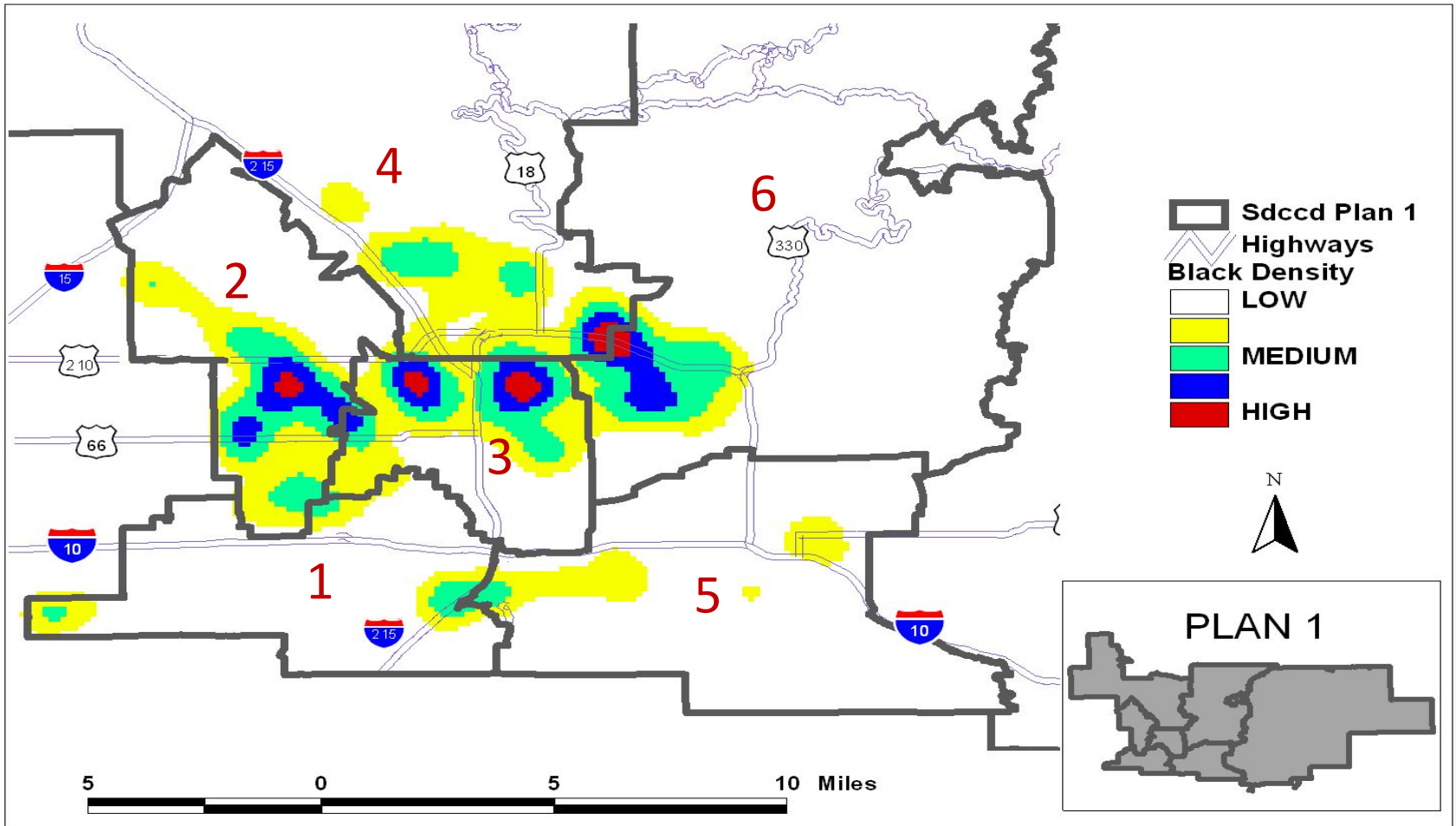
PLAN ANALYSIS IN AFRICAN AMERICAN COMMUNITIES



NAACP SAN BERNARDINO BRANCH

This map shows why **Plan1** is the best distribution of the African American population. It best maximizes the influence of African Americans.

SBCCD Black Population Concentration

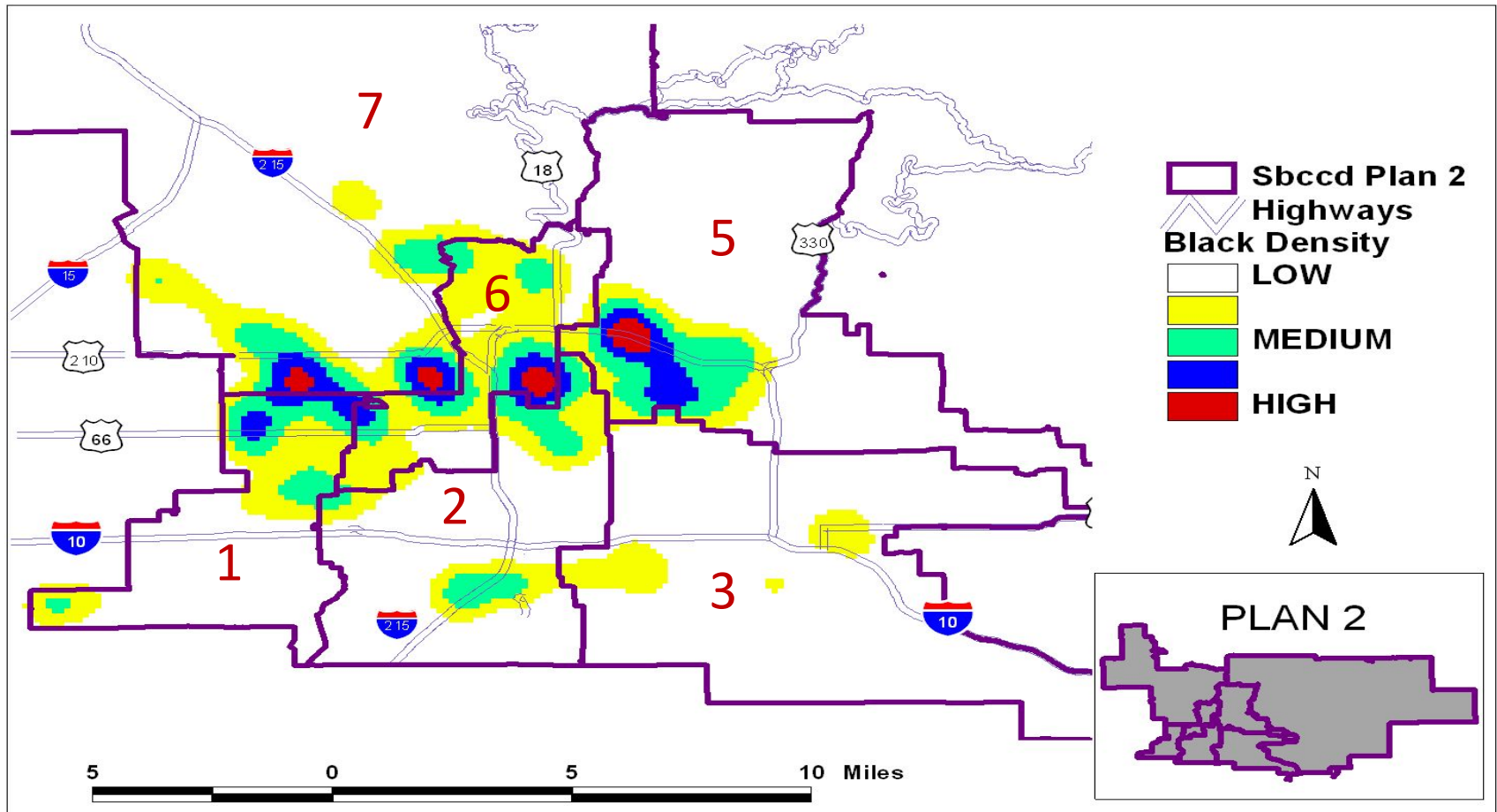




NAACP SAN BERNARDINO BRANCH

Plan 2 cracks the African American communities of interest and dilutes their influence in SDCCD elections. The Del Rosa area is placed with the mountains and Mentone. City boundaries are greatly disrupted. Moreover, the mix of communities is poorly configured. Finally, the population deviation is too high.

SBCCD Black Population Concentration

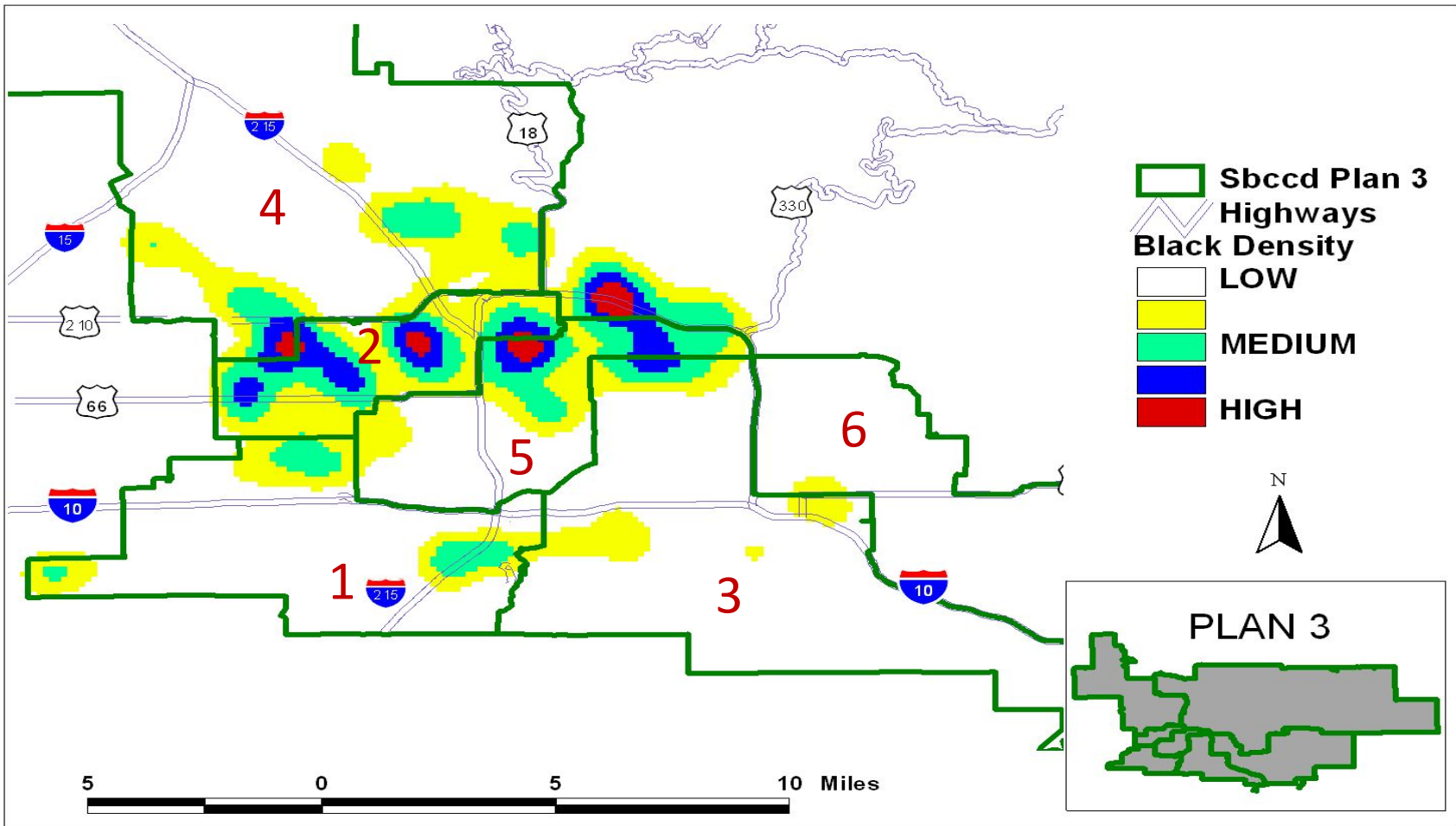




NAACP SAN BERNARDINO BRANCH

High deviation and is not as compact as Plan 1. The configuration of the mountain district creates too many splits in cities and also results in a decrease of African American influence and communities of interest. The attempt to keep incumbents in separate districts creates quasi-gerrymandered districts.

SBCCD Black Population Concentration





NAACP SAN BERNARDINO BRANCH

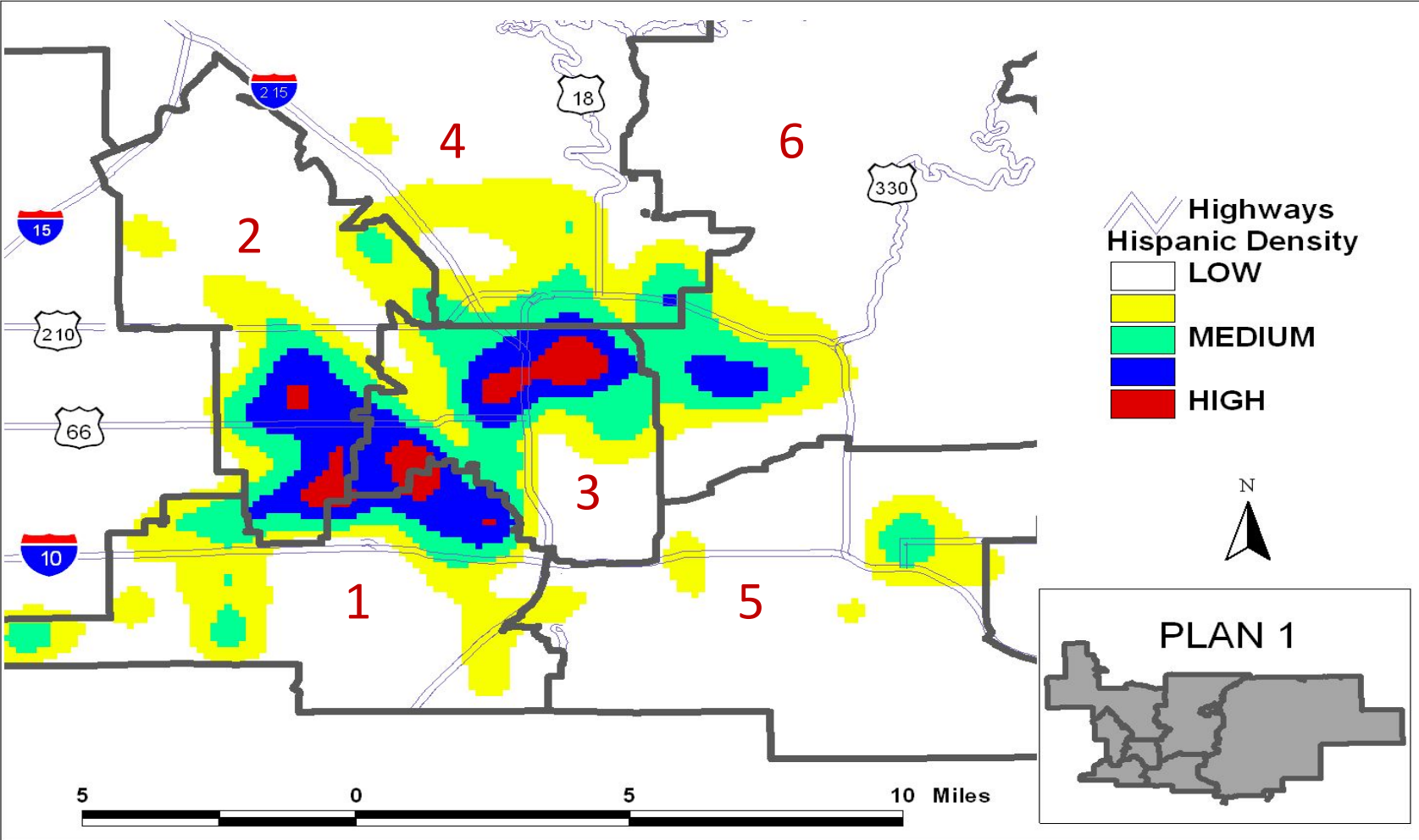
PLAN ANALYSIS IN HISPANIC COMMUNITIES



NAACP SAN BERNARDINO BRANCH

Plan1 follows the city boundaries and natural neighborhoods based on geographic features. This plan creates the most viable Majority-Minority districts with the Hispanic CVAP over 50%.

SBCCD Hispanic Population Concentration

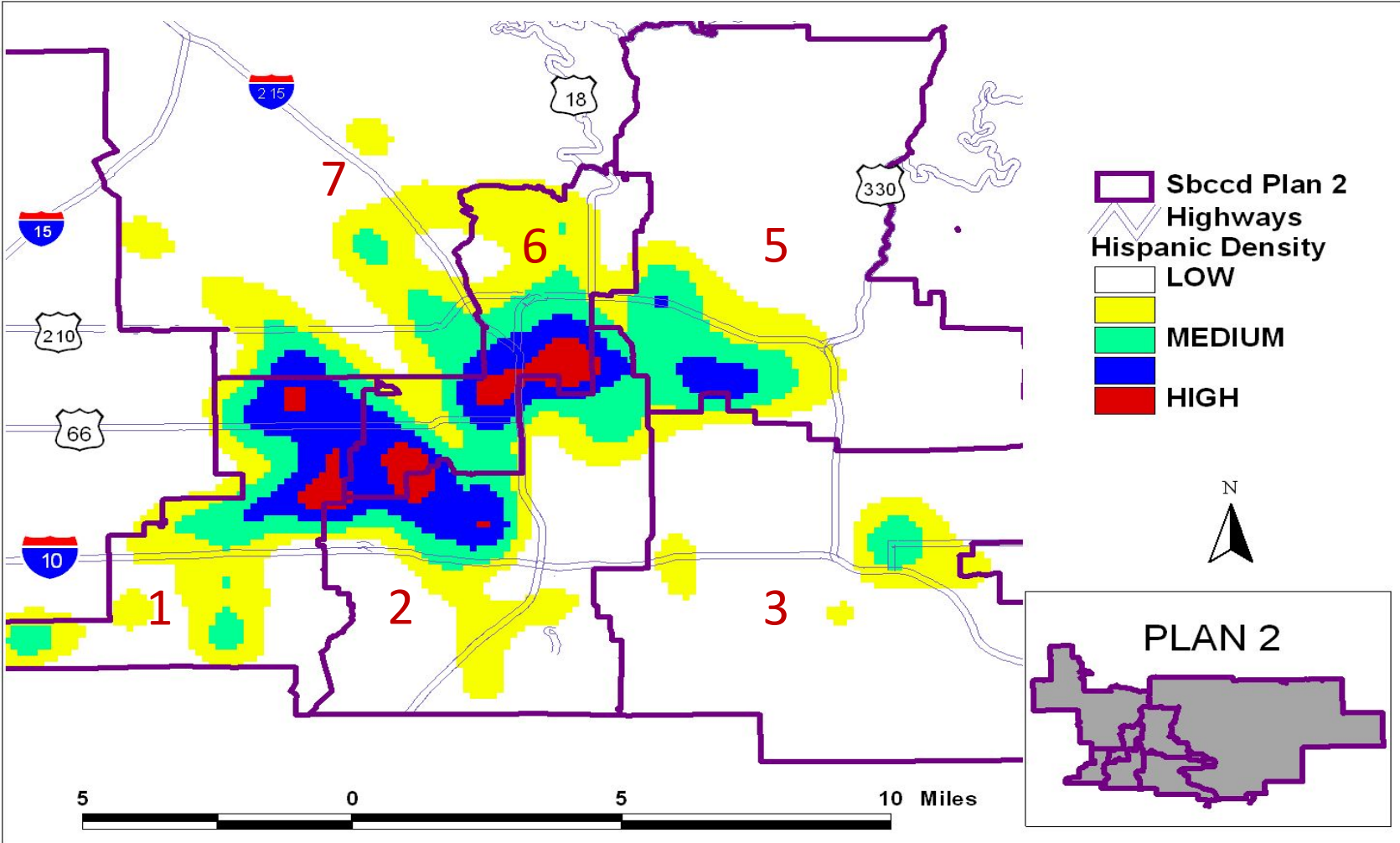




NAACP SAN BERNARDINO BRANCH

Plan2 Deviation is much too high and the districts do not maximize the Hispanic CVAP. The plan dilutes Hispanic communities of interest.

SBCCD Hispanic Population Concentration

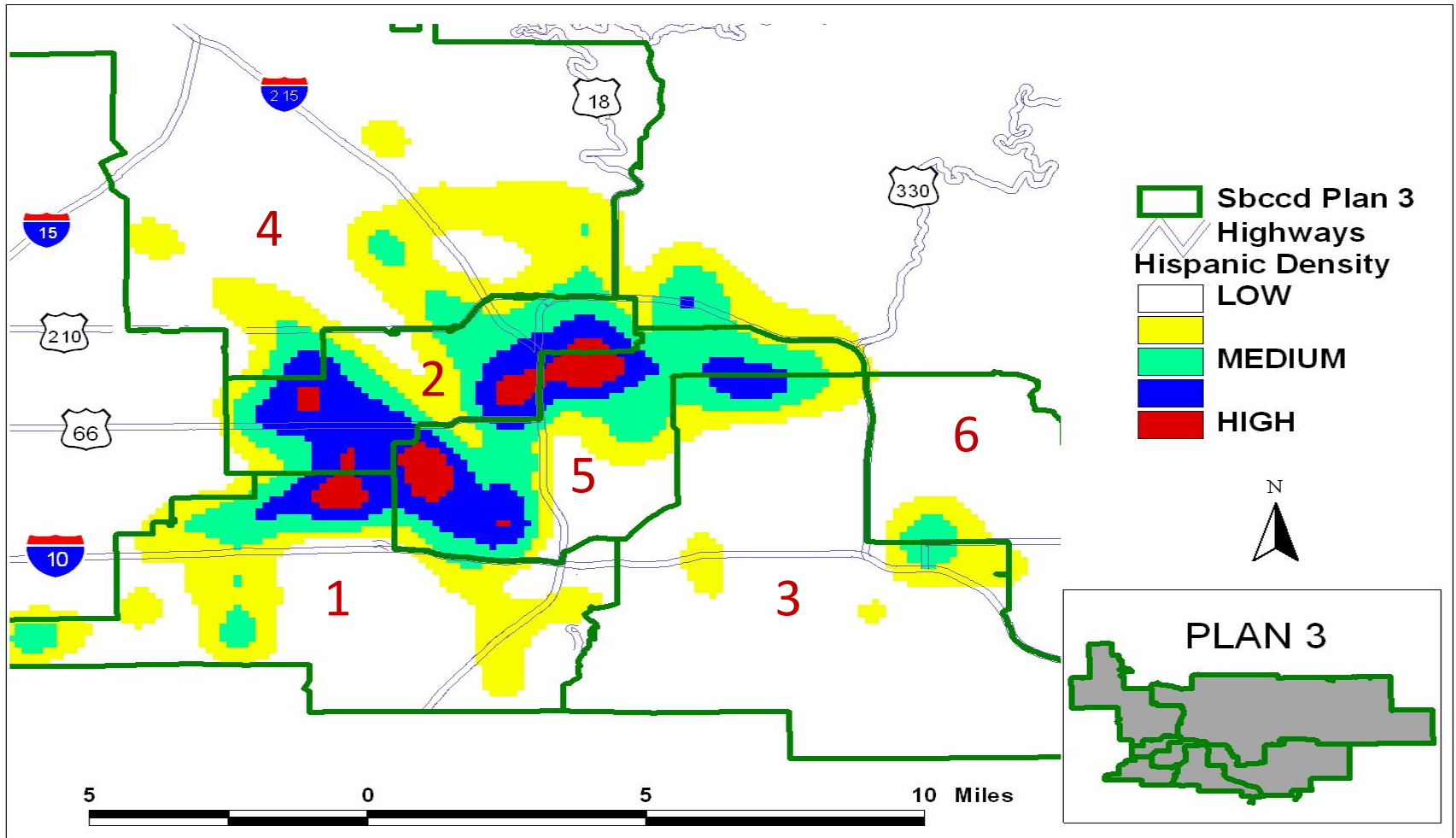




NAACP SAN BERNARDINO BRANCH

Plan3 Deviation is too high and the districts do not maximize the Hispanic CVAP due to the configuration of the districts. The plan is not as compact and creates splits in key communities. Colton and Highland are not the best geographic configuration.

SBCCD Hispanic Population Concentration





NAACP SAN BERNARDINO BRANCH

SUMMARY

The San Bernardino Branch of the NAACP commends the San Bernardino Community College District (SBCCD) for initiating the redistricting process to adhere to the California Voting Rights Act of 2002. The creation of the plans to move from “at-large” voting to “district-based” elections should be based on all of the required redistricting criteria.

We recommend that the Trustees adopt **Plan 1**.
Plan 1 maximizes all of the redistricting criteria.