

San Bernardino Community  
College District  
2021 Redistricting



# What is Redistricting

## Definition

Redistricting is the process of adjusting district lines every 10 years after the release of the U.S. Census. The well-known examples are Congress and the legislature.

Within the U.S., redistricting has become an extremely politicized process and has been the subject of more high-profile Supreme Court decisions than any other part of our elections system.

# Traditional Redistricting Principles

Preventing a Districting from becoming a Gerrymander

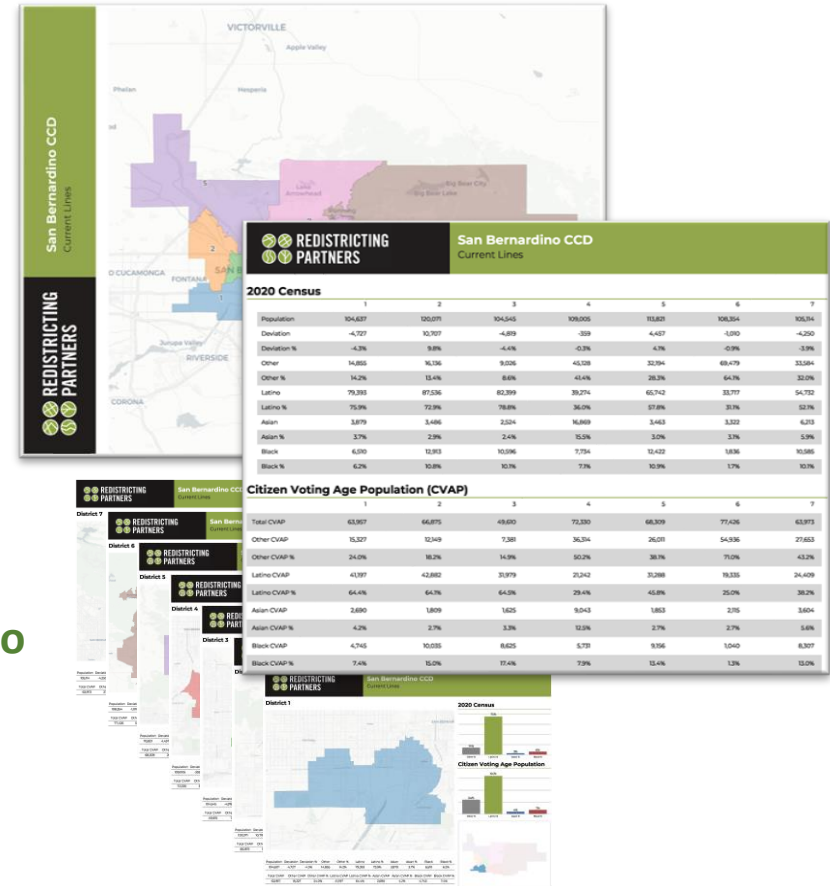
There are a number of criteria that have been used nationally and upheld by courts.

- Relatively equal size - people, not citizens
- Contiguous – districts should not hop/jump
- Maintain “*communities of interest*”
- Follow city and census designated place boundaries
- Keep districts compact – appearance/function

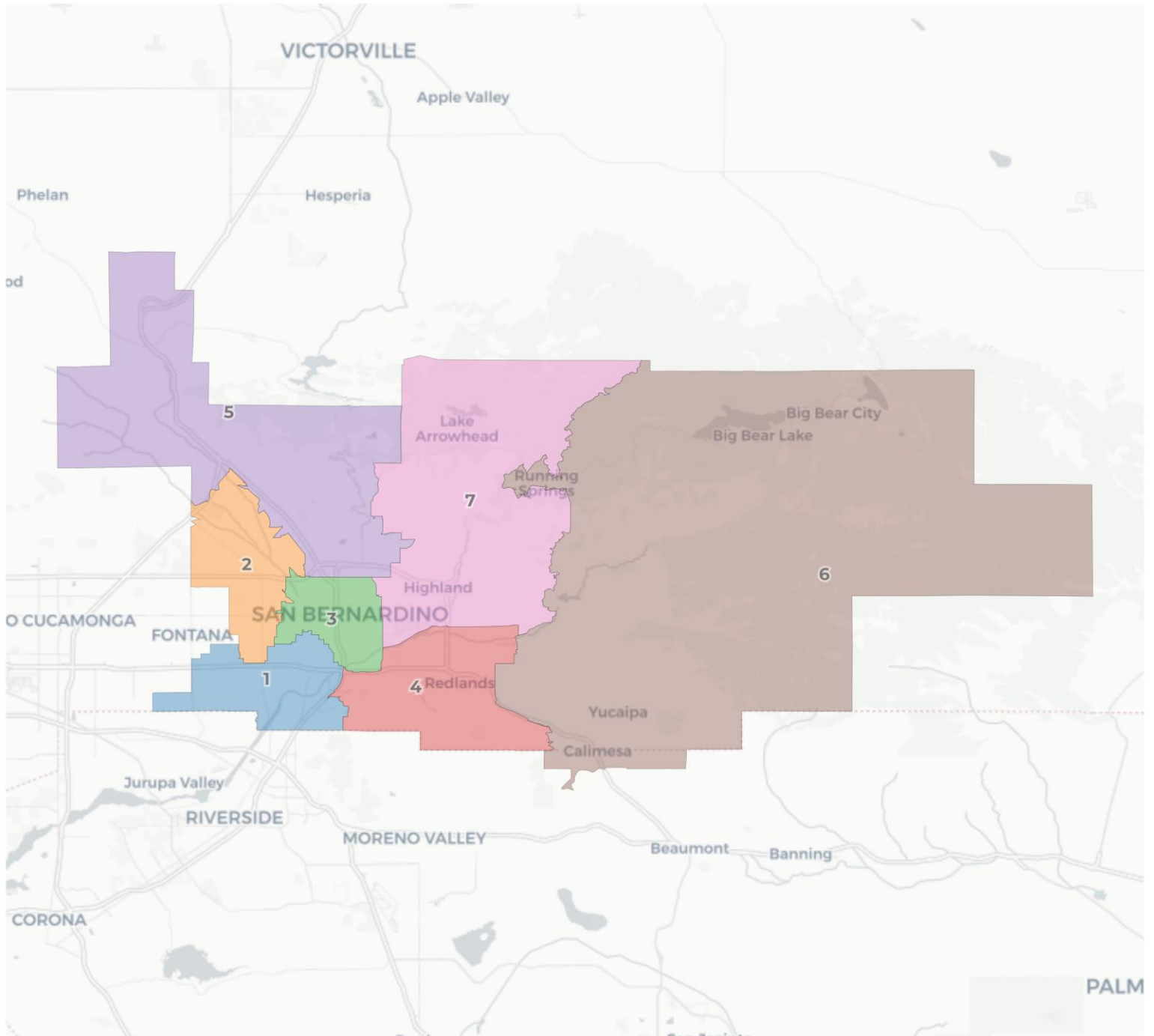
# Draft Map Plans

Each draft plan is provided with both a PDF and Online Web-based format

- Draft Map A – Minimum Change
- Draft Map B – Minimum Change moving Muscoy from Area 2 to Area3
- Draft Map C – Areas 2 and 5 move north to adjust for population







## 2020 Census

	1	2	3	4	5	6	7
Population	104,637	120,071	104,545	109,005	113,821	108,354	105,114
Deviation	-4,727	10,707	-4,819	-359	4,457	-1,010	-4,250
Deviation %	-4.3%	9.8%	-4.4%	-0.3%	4.1%	-0.9%	-3.9%
Other	14,855	16,136	9,026	45,128	32,194	69,479	33,584
Other %	14.2%	13.4%	8.6%	41.4%	28.3%	64.1%	32.0%
Latino	79,393	87,536	82,399	39,274	65,742	33,717	54,732
Latino %	75.9%	72.9%	78.8%	36.0%	57.8%	31.1%	52.1%
Asian	3,879	3,486	2,524	16,869	3,463	3,322	6,213
Asian %	3.7%	2.9%	2.4%	15.5%	3.0%	3.1%	5.9%
Black	6,510	12,913	10,596	7,734	12,422	1,836	10,585
Black %	6.2%	10.8%	10.1%	7.1%	10.9%	1.7%	10.1%

## Citizen Voting Age Population (CVAP)

	1	2	3	4	5	6	7
Total CVAP	63,957	66,875	49,610	72,330	68,309	77,426	63,973
Other CVAP	15,327	12,149	7,381	36,314	26,011	54,936	27,653
Other CVAP %	24.0%	18.2%	14.9%	50.2%	38.1%	71.0%	43.2%
Latino CVAP	41,197	42,882	31,979	21,242	31,288	19,335	24,409
Latino CVAP %	64.4%	64.1%	64.5%	29.4%	45.8%	25.0%	38.2%
Asian CVAP	2,690	1,809	1,625	9,043	1,853	2,115	3,604
Asian CVAP %	4.2%	2.7%	3.3%	12.5%	2.7%	2.7%	5.6%
Black CVAP	4,745	10,035	8,625	5,731	9,156	1,040	8,307
Black CVAP %	7.4%	15.0%	17.4%	7.9%	13.4%	1.3%	13.0%

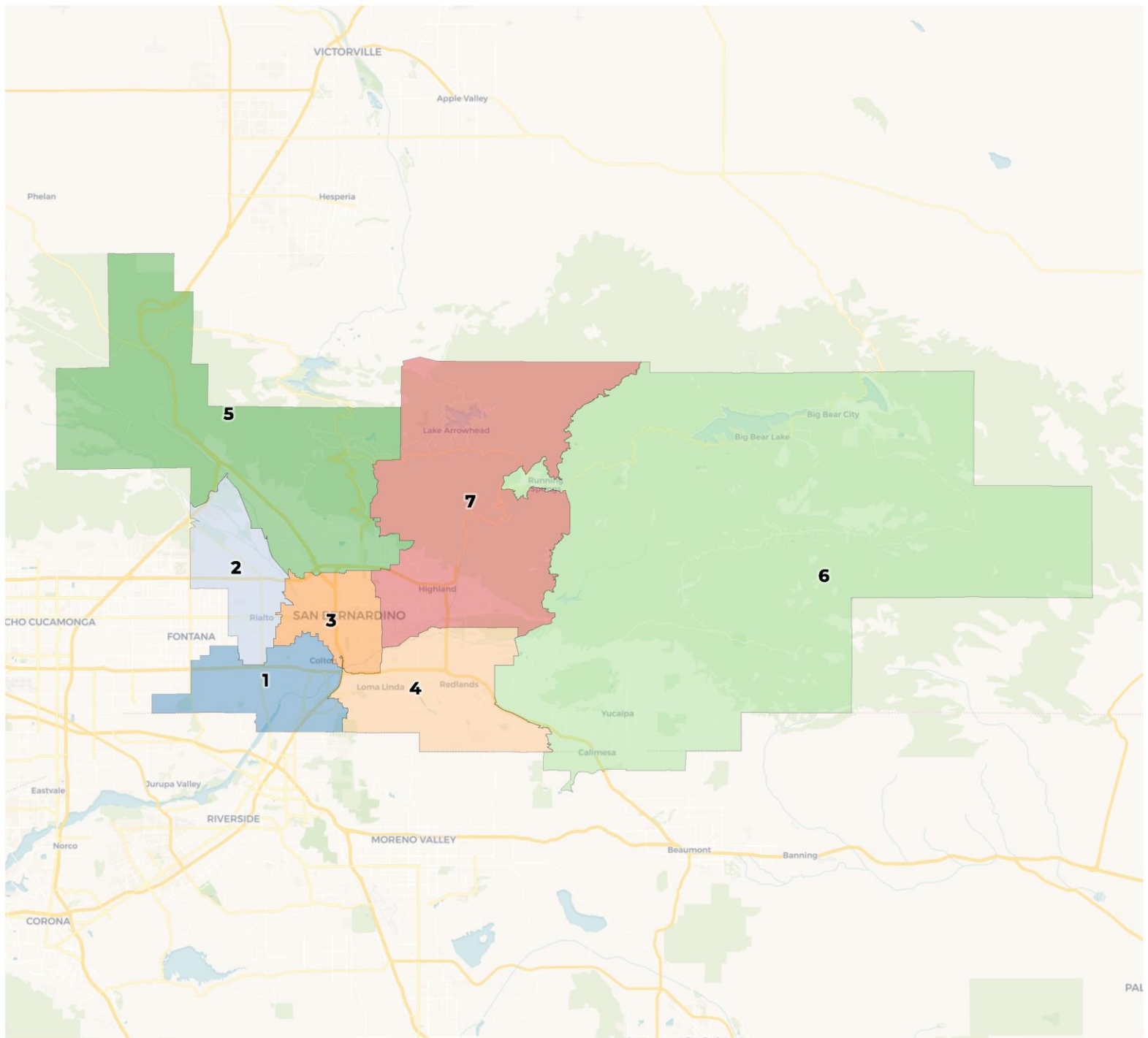
## 2020 Census

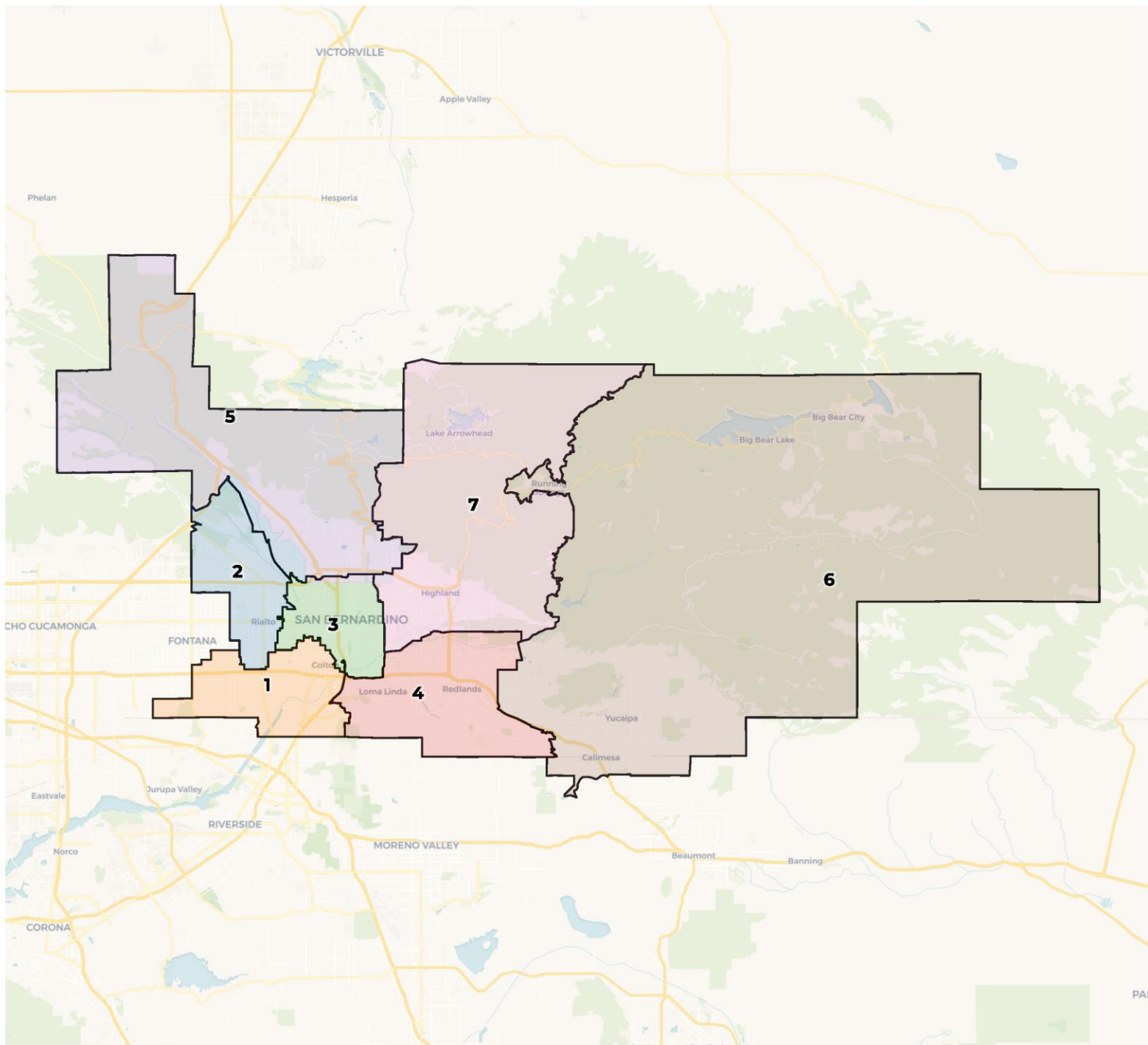
	1	2	3	4	5	6	7
Population	104,637	120,071	104,545	109,005	113,821	108,354	105,114
Deviation	-4,727	10,707	-4,819	-359	4,457	-1,010	-4,250
Deviation %	-4.3%	9.8%	-4.4%	-0.3%	4.1%	-0.9%	-3.9%
Other	14,855	16,136	9,026	45,128	32,194	69,479	33,584
Other %	14.2%	13.4%	8.6%	41.4%	28.3%	64.1%	32.0%
Latino	58,303	68,536	68,308	76,884	65,848	73,899	54,732
Latino %	55.7%	57.1%	65.5%	70.5%	58.0%	68.1%	52.1%
Asian	2,690	1,809	1,625	9,043	1,853	2,115	3,604
Asian %	3.7%	2.9%	2.4%	15.5%	3.0%	3.1%	5.9%
Black	6,510	12,913	10,596	7,734	12,422	1,836	10,585
Black %	6.2%	10.8%	10.1%	7.1%	10.9%	1.7%	10.1%

Total Deviation of 14.2%

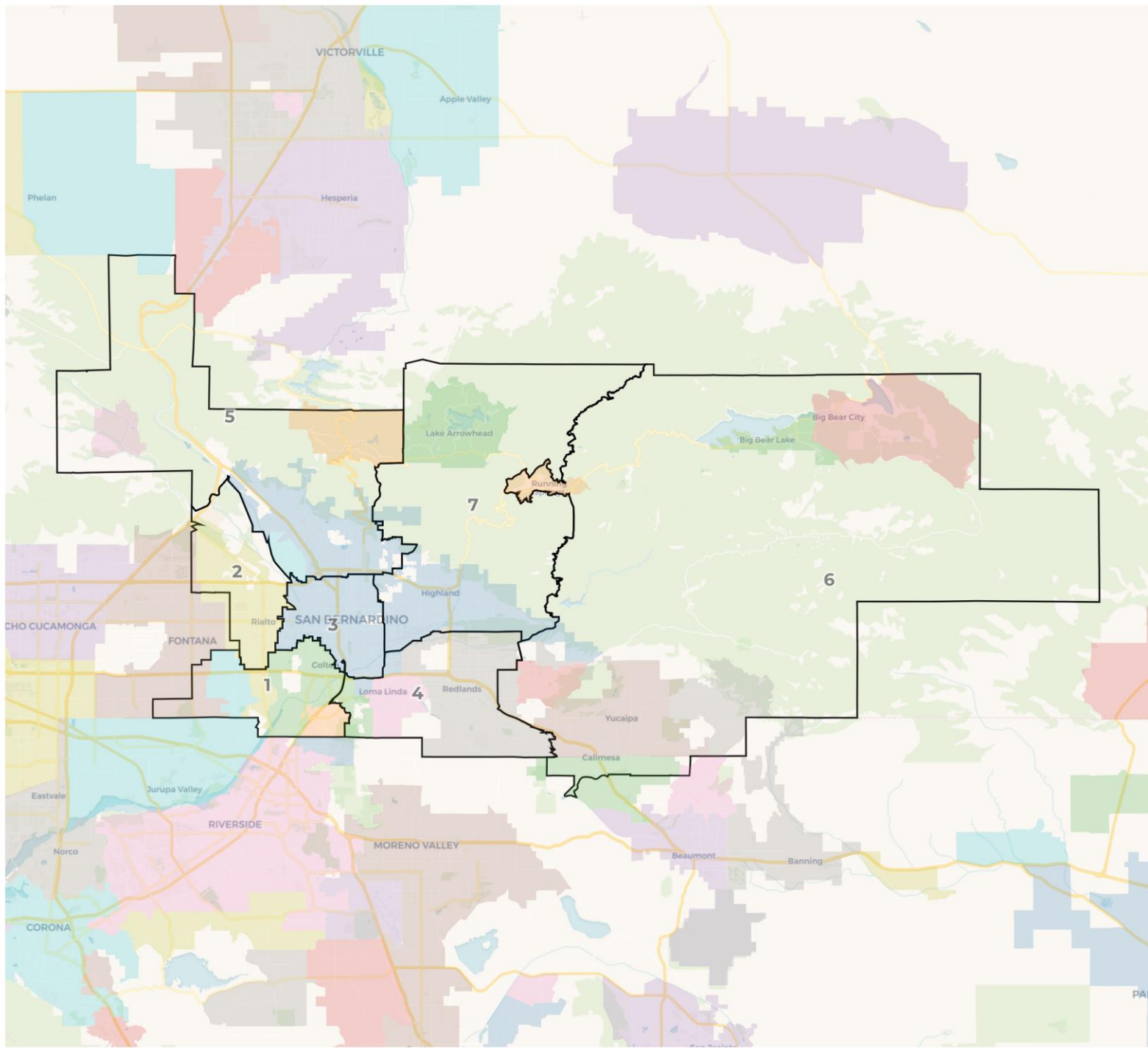
## Citizen Voting Age Population (CVAP)

	1	2	3	4	5	6	7
Total CVAP	63,957	66,875	49,610	72,330	68,309	77,426	63,973
Other CVAP	15,327	12,149	7,381	36,314	26,011	54,936	27,653
Other CVAP %	24.0%	18.2%	14.9%	50.2%	38.1%	71.0%	43.2%
Latino CVAP	41,197	42,882	31,979	21,242	31,288	19,335	24,409
Latino CVAP %	64.4%	64.1%	64.5%	29.4%	45.8%	25.0%	38.2%
Asian CVAP	2,690	1,809	1,625	9,043	1,853	2,115	3,604
Asian CVAP %	4.2%	2.7%	3.3%	12.5%	2.7%	2.7%	5.6%
Black CVAP	4,745	10,035	8,625	5,731	9,156	1,040	8,307
Black CVAP %	7.4%	15.0%	17.4%	7.9%	13.4%	1.3%	13.0%







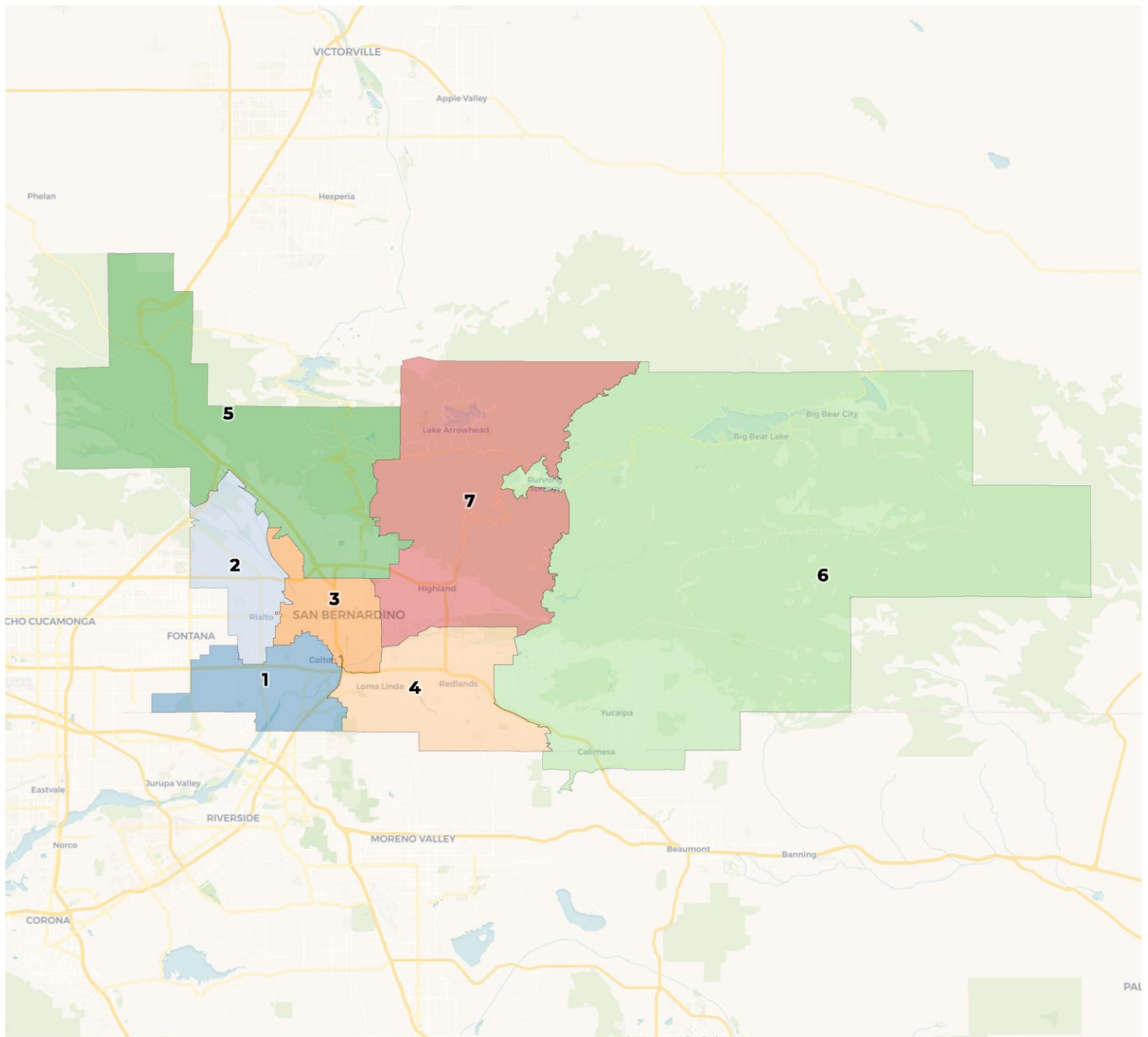


## 2020 Census

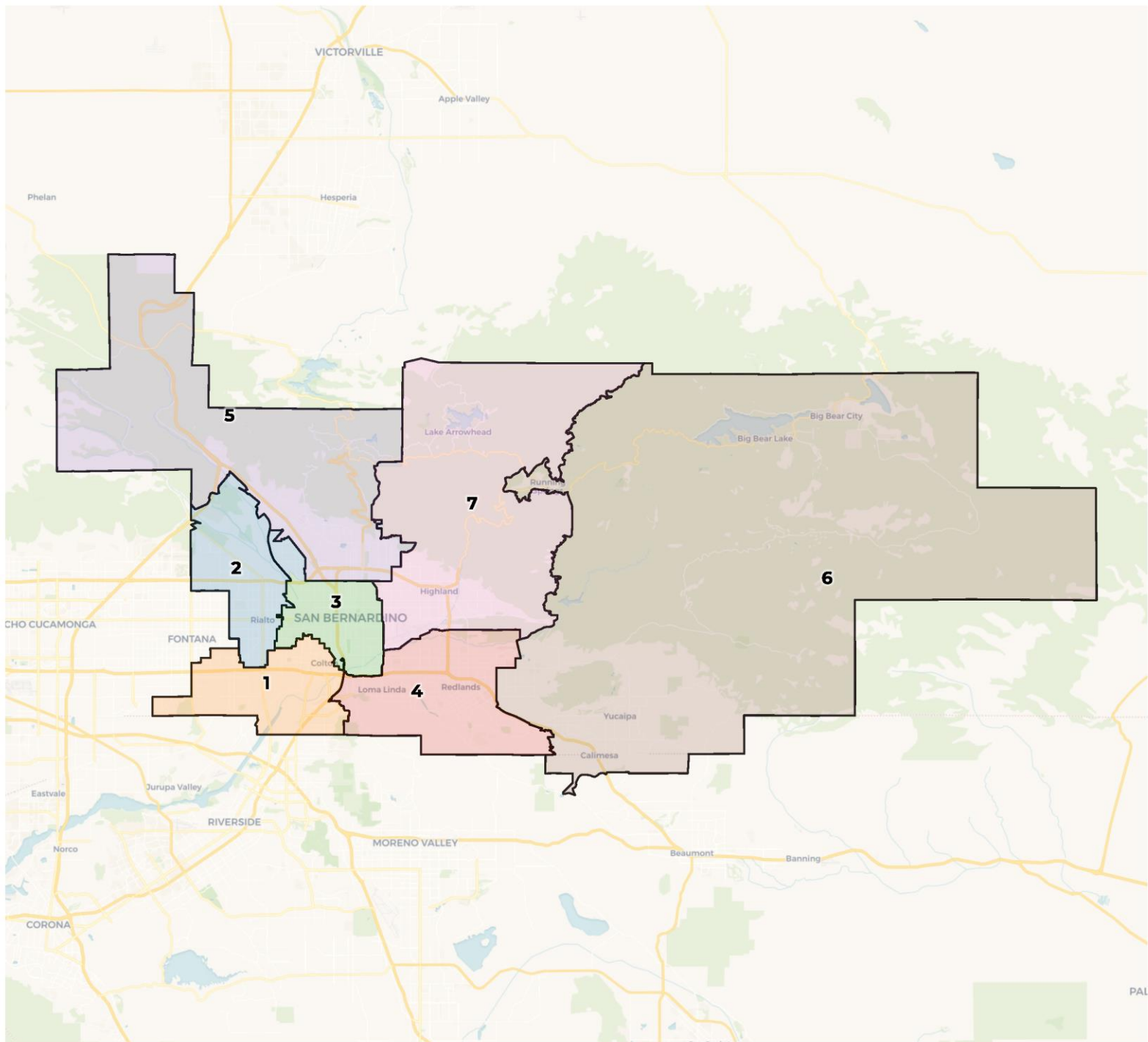
	1	2	3	4	5	6	7
Population	104,644	109,069	113,206	108,957	110,922	108,402	110,347
Deviation	-4,720	-295	3,842	-407	1,558	-962	983
Deviation %	-4.3%	-0.3%	3.5%	-0.4%	1.4%	-0.9%	0.9%
Other	14,858	15,205	10,169	45,096	31,120	69,511	34,443
Other %	14.2%	13.9%	9.0%	41.4%	28.1%	64.1%	31.2%
Latino	79,395	77,857	89,037	39,273	65,283	33,718	58,230
Latino %	75.9%	71.4%	78.7%	36.0%	58.9%	31.1%	52.8%
Asian	3,879	3,420	2,677	16,863	3,310	3,328	6,279
Asian %	3.7%	3.1%	2.4%	15.5%	3.0%	3.1%	5.7%
Black	6,512	12,587	11,323	7,725	11,209	1,845	11,395
Black %	6.2%	11.5%	10.0%	7.1%	10.1%	1.7%	10.3%

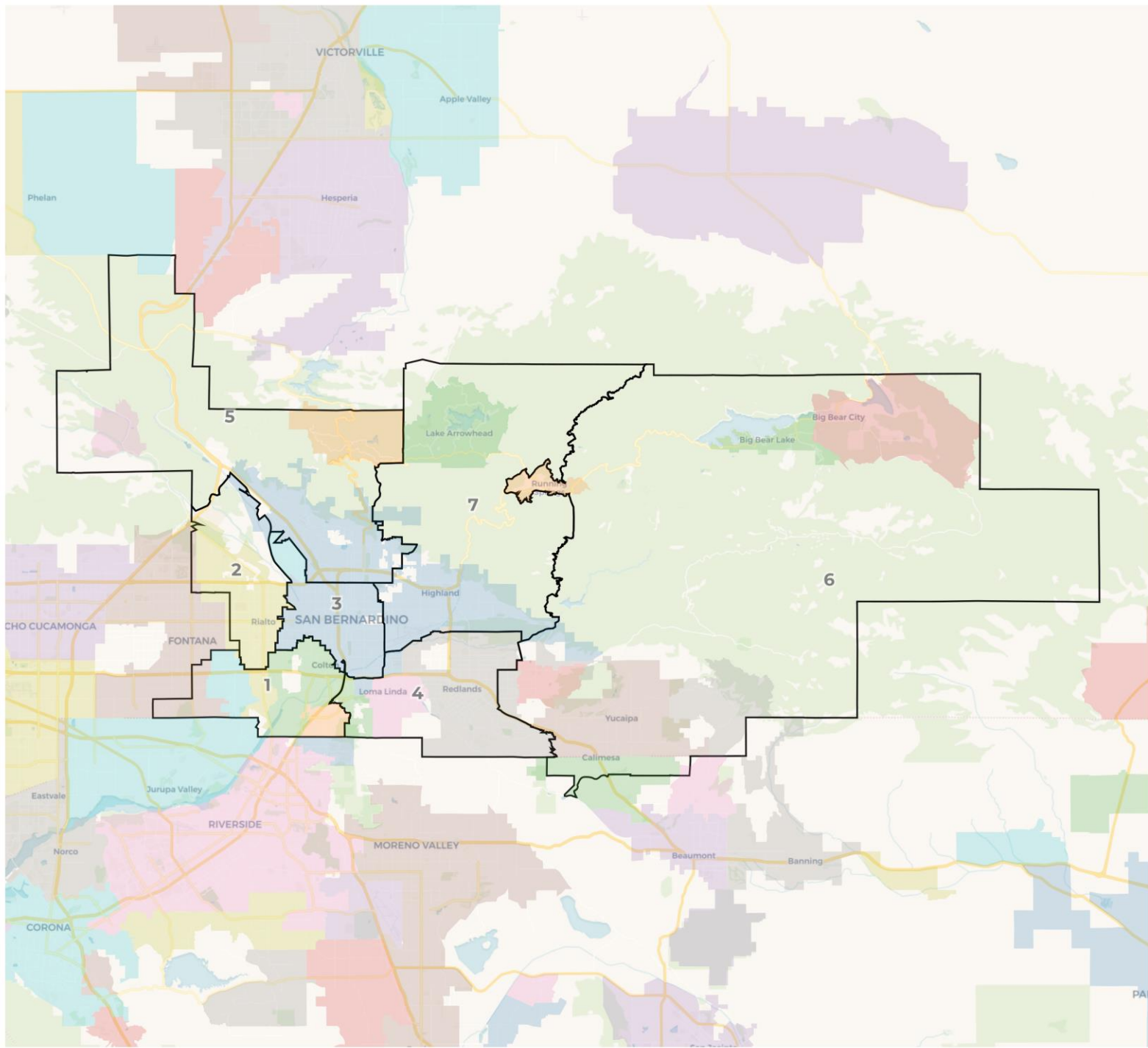
## Citizen Voting Age Population (CVAP)

	1	2	3	4	5	6	7
Total CVAP	63,969	60,889	53,942	72,306	67,259	77,450	66,665
Other CVAP	15,328	11,238	8,389	36,292	25,393	54,958	28,174
Other CVAP %	24.0%	18.5%	15.6%	50.2%	37.8%	71.0%	42.3%
Latino CVAP	41,206	38,451	34,738	21,240	31,667	19,337	25,692
Latino CVAP %	64.4%	63.1%	64.4%	29.4%	47.1%	25.0%	38.5%
Asian CVAP	2,690	1,607	1,671	9,043	1,955	2,115	3,657
Asian CVAP %	4.2%	2.6%	3.1%	12.5%	2.9%	2.7%	5.5%
Black CVAP	4,745	9,593	9,144	5,731	8,244	1,040	9,141
Black CVAP %	7.4%	15.8%	17.0%	7.9%	12.3%	1.3%	13.7%







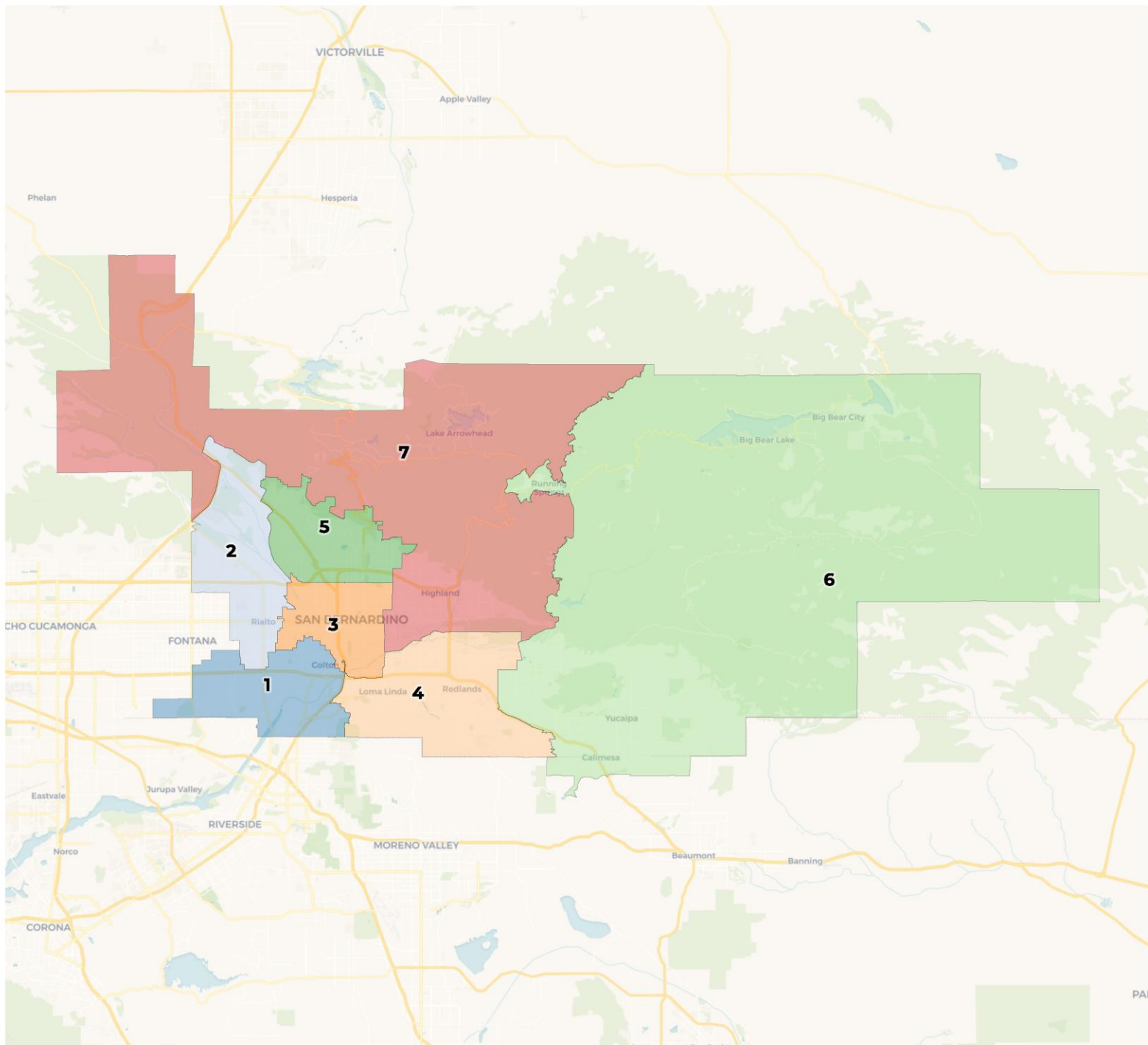


## 2020 Census

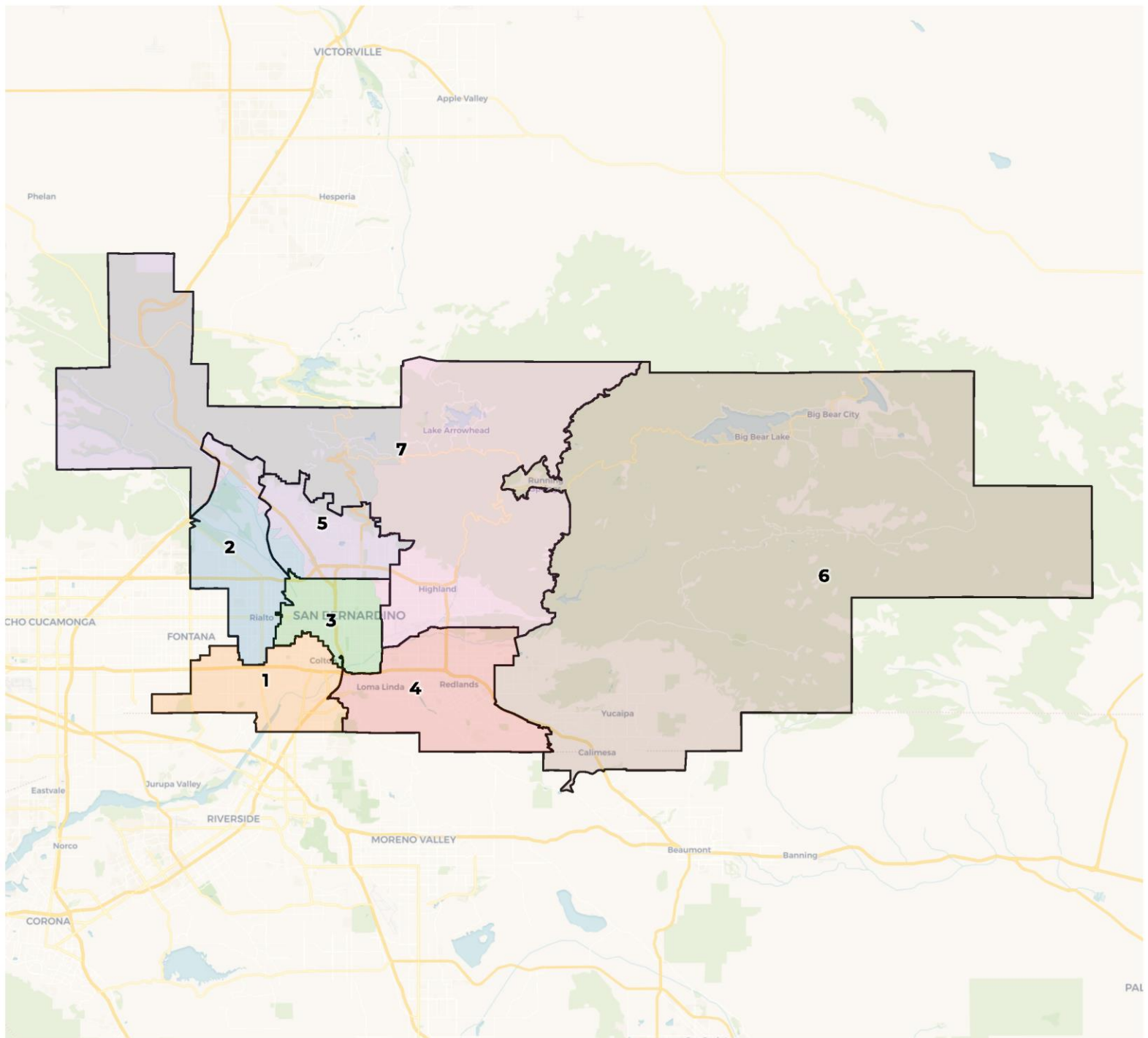
	1	2	3	4	5	6	7
Population	104,644	109,108	115,501	108,957	113,821	108,402	105,114
Deviation	-4,720	-256	6,137	-407	4,457	-962	-4,250
Deviation %	-4.3%	-0.2%	5.6%	-0.4%	4.1%	-0.9%	-3.9%
Other	14,858	15,223	9,936	45,096	32,194	69,511	33,584
Other %	14.2%	14.0%	8.6%	41.4%	28.3%	64.1%	32.0%
Latino	79,395	77,870	92,063	39,273	65,742	33,718	54,732
Latino %	75.9%	71.4%	79.7%	36.0%	57.8%	31.1%	52.1%
Asian	3,879	3,420	2,590	16,863	3,463	3,328	6,213
Asian %	3.7%	3.1%	2.2%	15.5%	3.0%	3.1%	5.9%
Black	6,512	12,595	10,912	7,725	12,422	1,845	10,585
Black %	6.2%	11.5%	9.4%	7.1%	10.9%	1.7%	10.1%

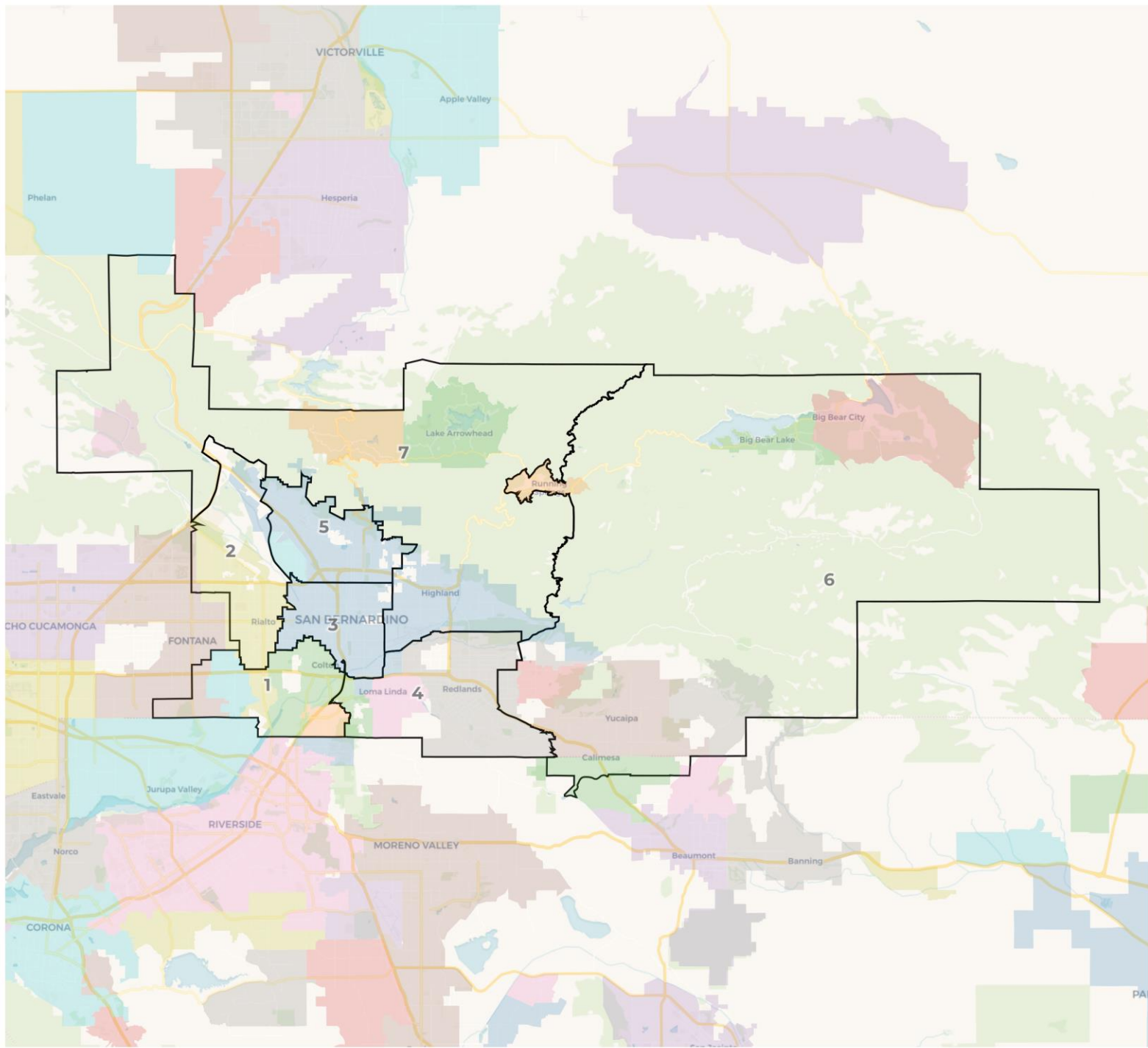
## Citizen Voting Age Population (CVAP)

	1	2	3	4	5	6	7
Total CVAP	63,957	61,006	55,479	72,306	68,309	77,450	63,973
Other CVAP	15,327	11,277	8,253	36,292	26,011	54,958	27,653
Other CVAP %	24.0%	18.5%	14.9%	50.2%	38.1%	71.0%	43.2%
Latino CVAP	41,197	38,504	36,357	21,240	31,288	19,337	24,409
Latino CVAP %	64.4%	63.1%	65.5%	29.4%	45.8%	25.0%	38.2%
Asian CVAP	2,690	1,612	1,822	9,043	1,853	2,115	3,604
Asian CVAP %	4.2%	2.6%	3.3%	12.5%	2.7%	2.7%	5.6%
Black CVAP	4,745	9,613	9,047	5,731	9,156	1,040	8,307
Black CVAP %	7.4%	15.8%	16.3%	7.9%	13.4%	1.3%	13.0%









## 2020 Census

	1	2	3	4	5	6	7
Population	104,644	110,887	111,223	108,957	109,937	108,402	111,497
Deviation	-4,720	1,523	1,859	-407	573	-962	2,133
Deviation %	-4.3%	1.4%	1.7%	-0.4%	0.5%	-0.9%	2.0%
Other	14,858	16,285	9,863	45,096	22,772	69,511	42,017
Other %	14.2%	14.7%	8.9%	41.4%	20.7%	64.1%	37.7%
Latino	79,395	78,477	87,236	39,273	71,448	33,718	53,246
Latino %	75.9%	70.8%	78.4%	36.0%	65.0%	31.1%	47.8%
Asian	3,879	3,479	2,678	16,863	3,237	3,328	6,292
Asian %	3.7%	3.1%	2.4%	15.5%	2.9%	3.1%	5.6%
Black	6,512	12,646	11,446	7,725	12,480	1,845	9,942
Black %	6.2%	11.4%	10.3%	7.1%	11.4%	1.7%	8.9%

## Citizen Voting Age Population (CVAP)

	1	2	3	4	5	6	7
Total CVAP	63,957	62,911	53,097	72,306	63,832	77,450	68,926
Other CVAP	15,327	12,350	8,168	36,292	19,215	54,958	33,461
Other CVAP %	24.0%	19.6%	15.4%	50.2%	30.1%	71.0%	48.5%
Latino CVAP	41,197	39,178	34,147	21,240	33,512	19,337	23,720
Latino CVAP %	64.4%	62.3%	64.3%	29.4%	52.5%	25.0%	34.4%
Asian CVAP	2,690	1,647	1,724	9,043	1,880	2,115	3,639
Asian CVAP %	4.2%	2.6%	3.2%	12.5%	2.9%	2.7%	5.3%
Black CVAP	4,745	9,736	9,058	5,731	9,224	1,040	8,105
Black CVAP %	7.4%	15.5%	17.1%	7.9%	14.5%	1.3%	11.8%

# Redistricting Process

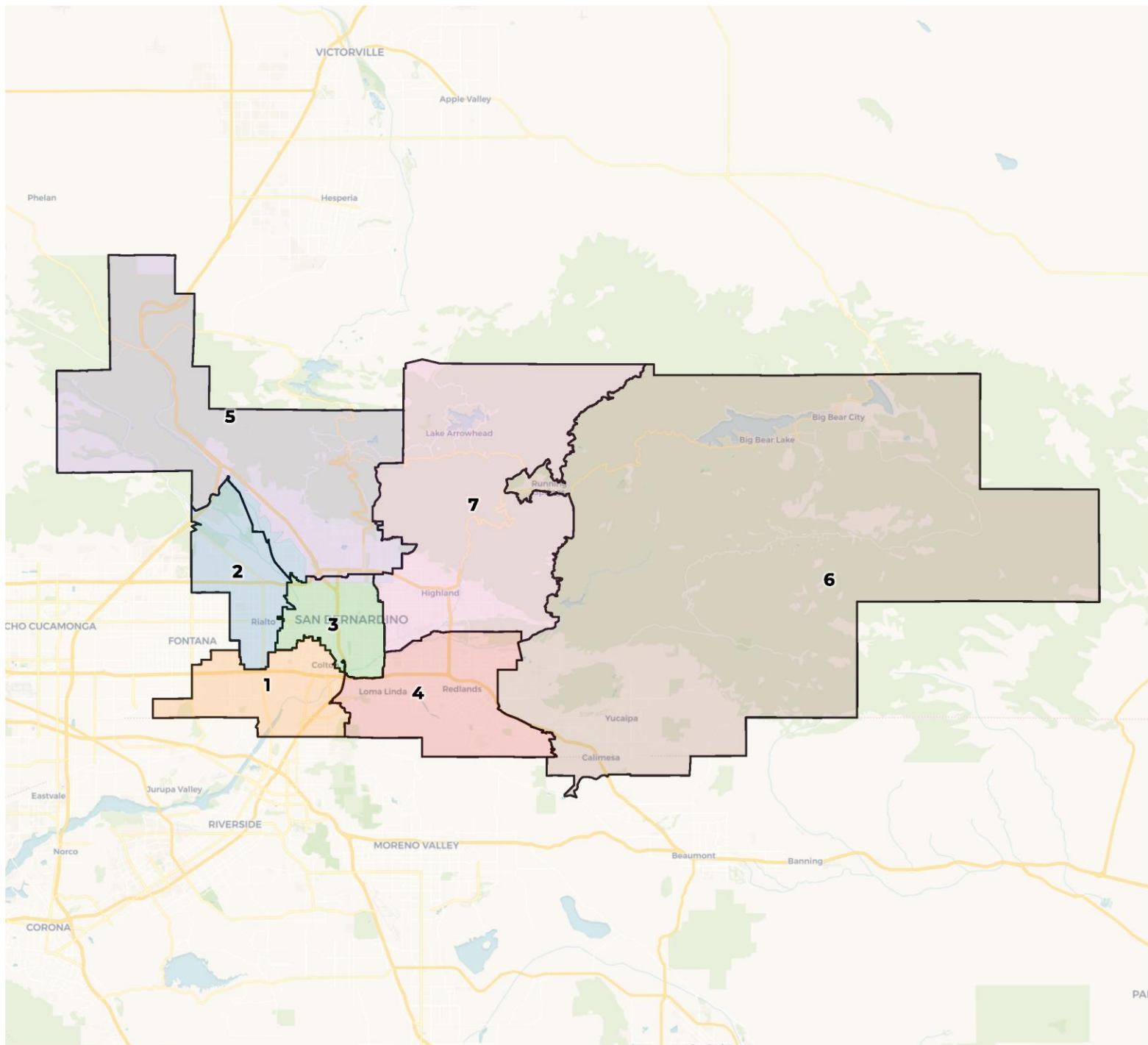
## Timeline for Upcoming Meetings

- December 10, 2021      Hearing on Draft Maps
- January 13, 2022      Final Maps & Vote
- February 28, 2022      Deadline for Final Map Submission

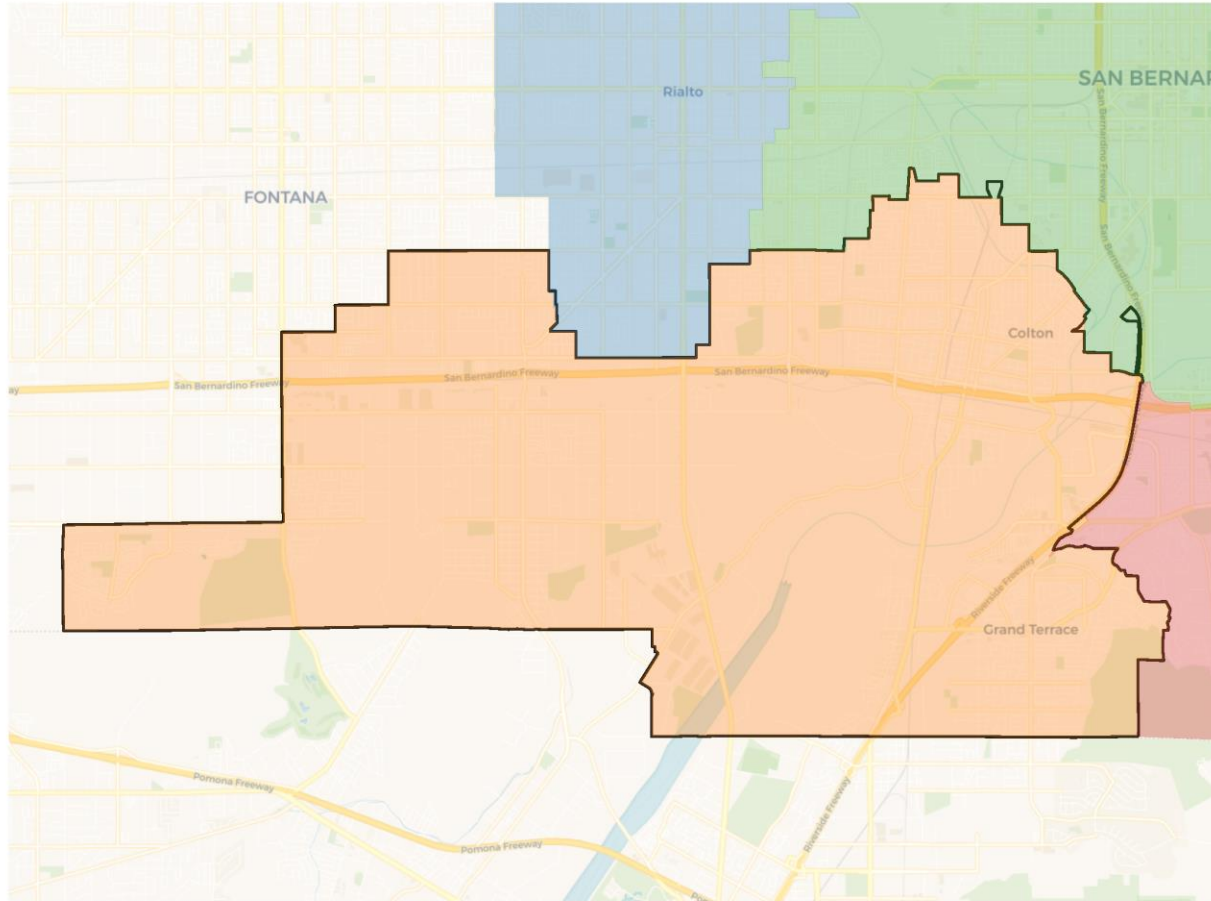




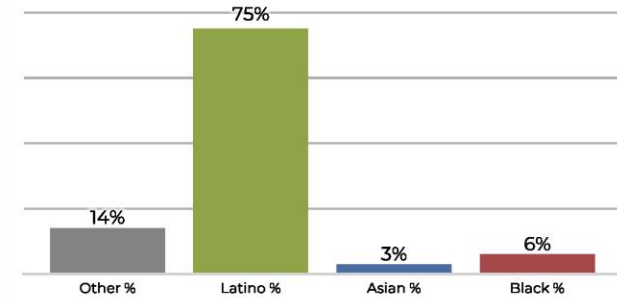
**REDISTRICTING  
PARTNERS**



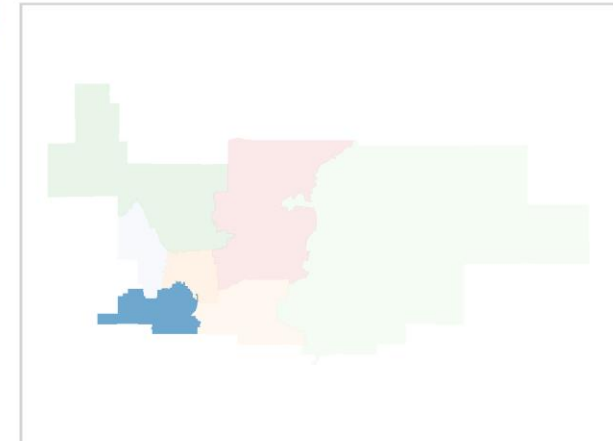
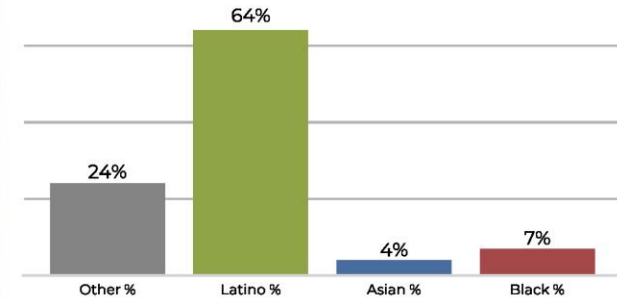
**Area 1 (Reyes 2024)**



**2020 Census**

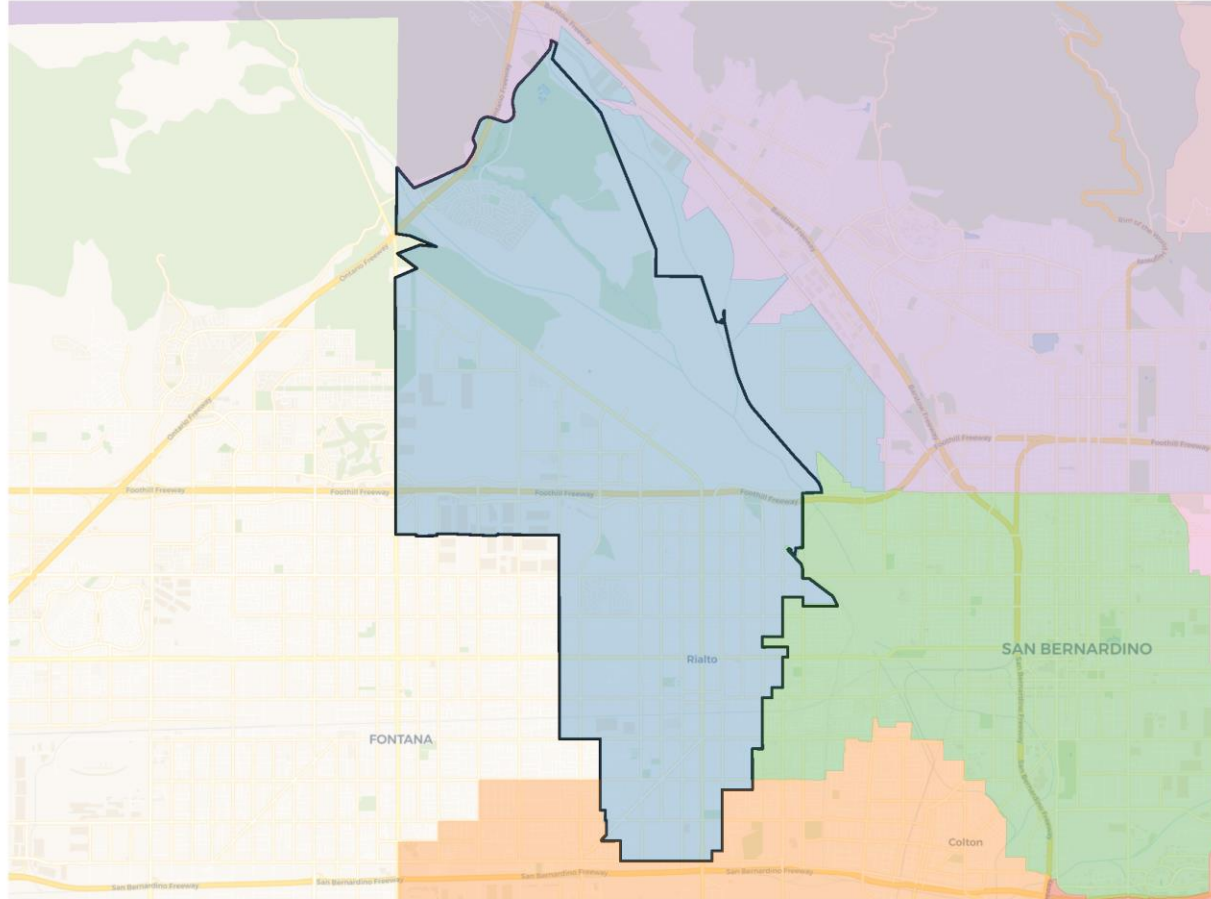


**Citizen Voting Age Population**



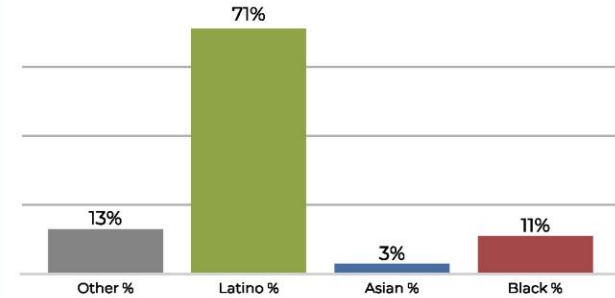
Population	Deviation	Deviation %	Other	Other %	Latino	Latino %	Asian	Asian %	Black	Black %
104,644	-4,720	-4.3%	14,858	14.2%	79,395	75.9%	3,879	3.7%	6,512	6.2%
Total CVAP	Other CVAP	Other CVAP %	Latino CVAP	Latino CVAP %	Asian CVAP	Asian CVAP %	Black CVAP	Black CVAP %		
63,969	15,328	24.0%	41,206	64.4%	2,690	4.2%	4,745	7.4%		

## Area 2 (Williams 2022)

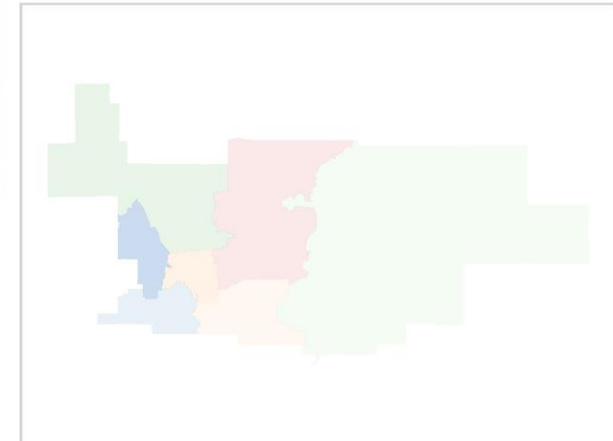
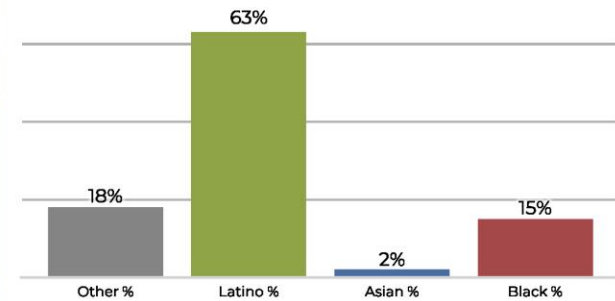


Population	Deviation	Deviation %	Other	Other %	Latino	Latino %	Asian	Asian %	Black	Black %
109,069	-295	-0.3%	15,205	13.9%	77,857	71.4%	3,420	3.1%	12,587	11.5%
Total CVAP	Other CVAP	Other CVAP %	Latino CVAP	Latino CVAP %	Asian CVAP	Asian CVAP %	Black CVAP	Black CVAP %		
60,889	11,238	18.5%	38,451	63.1%	1,607	2.6%	9,593	15.8%		

## 2020 Census

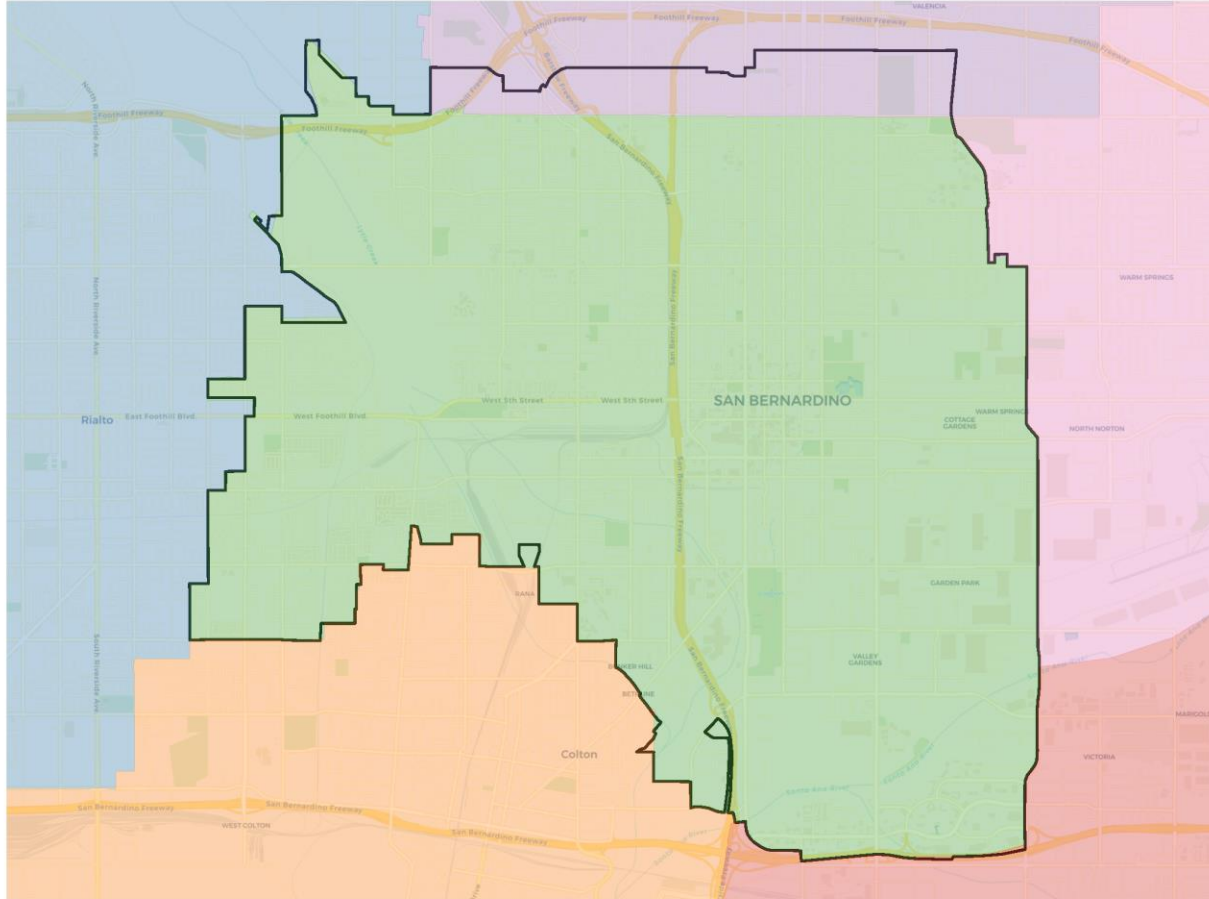


## Citizen Voting Age Population

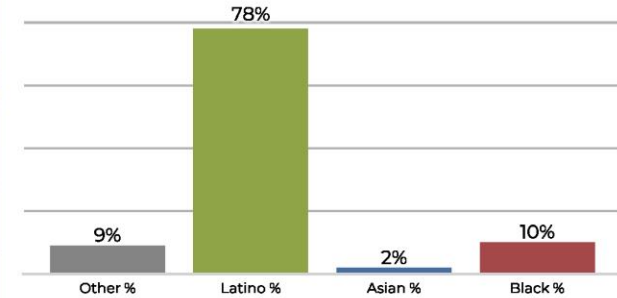




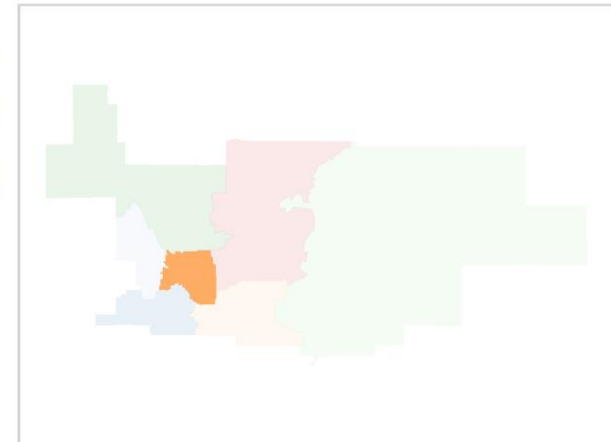
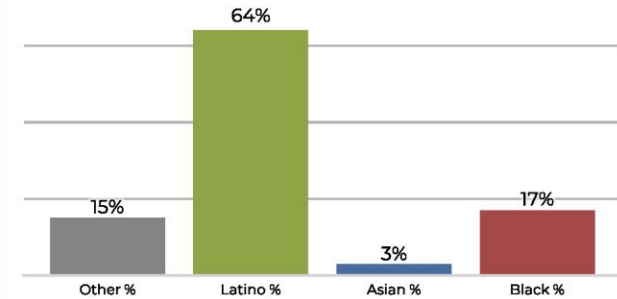
## Area 3 (Longville 2024)



## 2020 Census

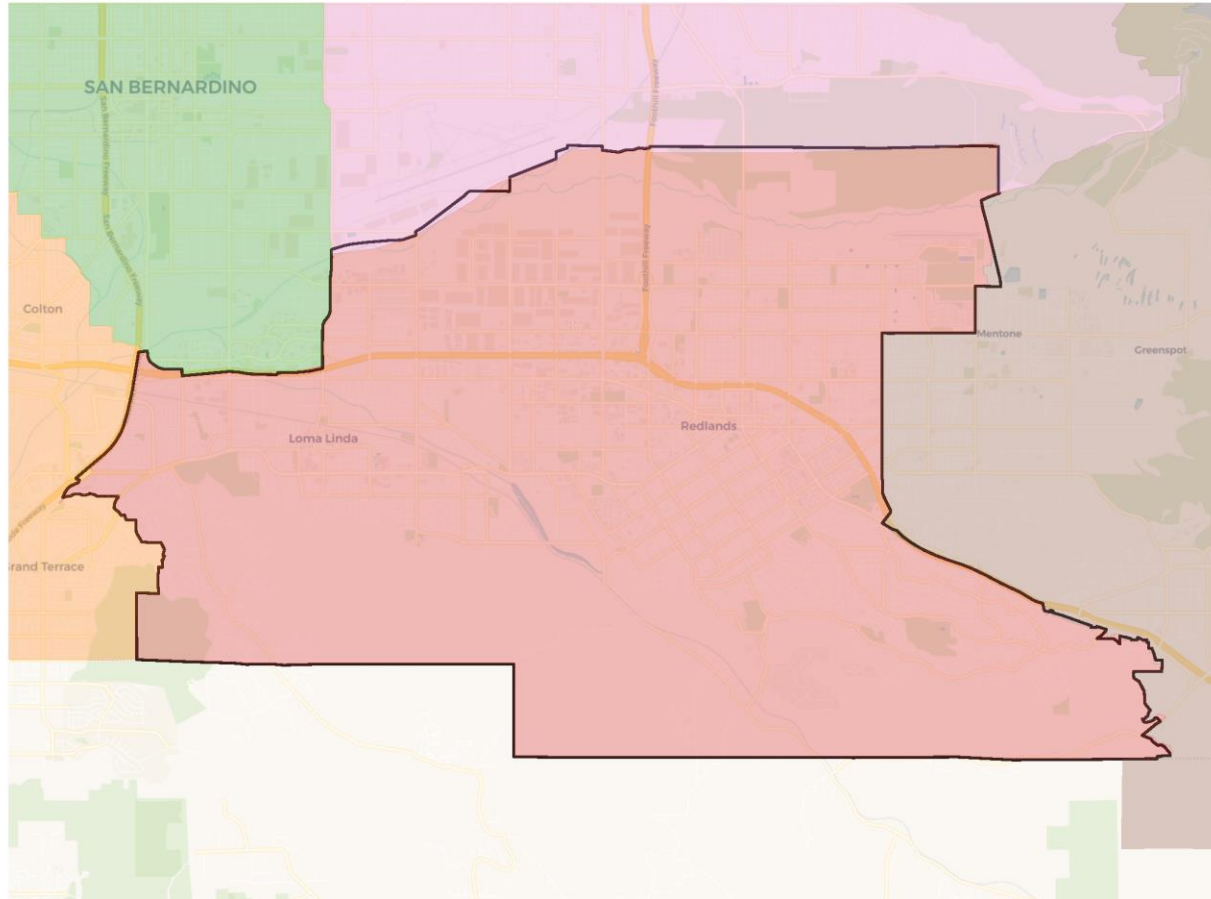


## Citizen Voting Age Population

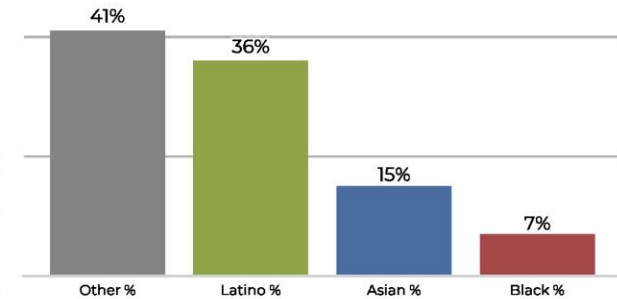


Population	Deviation	Deviation %	Other	Other %	Latino	Latino %	Asian	Asian %	Black	Black %
113,206	3,842	3.5%	10,169	9.0%	89,037	78.7%	2,677	2.4%	11,323	10.0%
Total CVAP	Other CVAP	Other CVAP %	Latino CVAP	Latino CVAP %	Asian CVAP	Asian CVAP %	Black CVAP	Black CVAP %		
53,942	8,389	15.6%	34,738	64.4%	1,671	3.1%	9,144	17.0%		

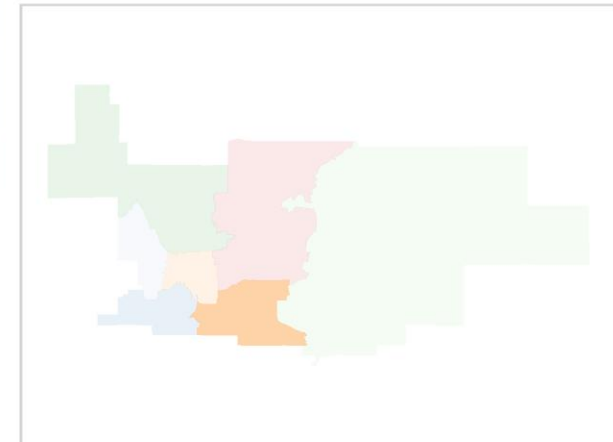
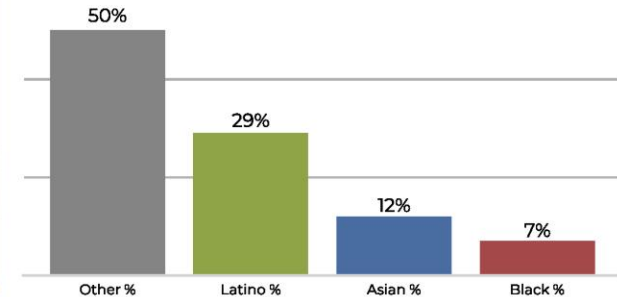
## Area 4 (Gonzales 2022)



## 2020 Census

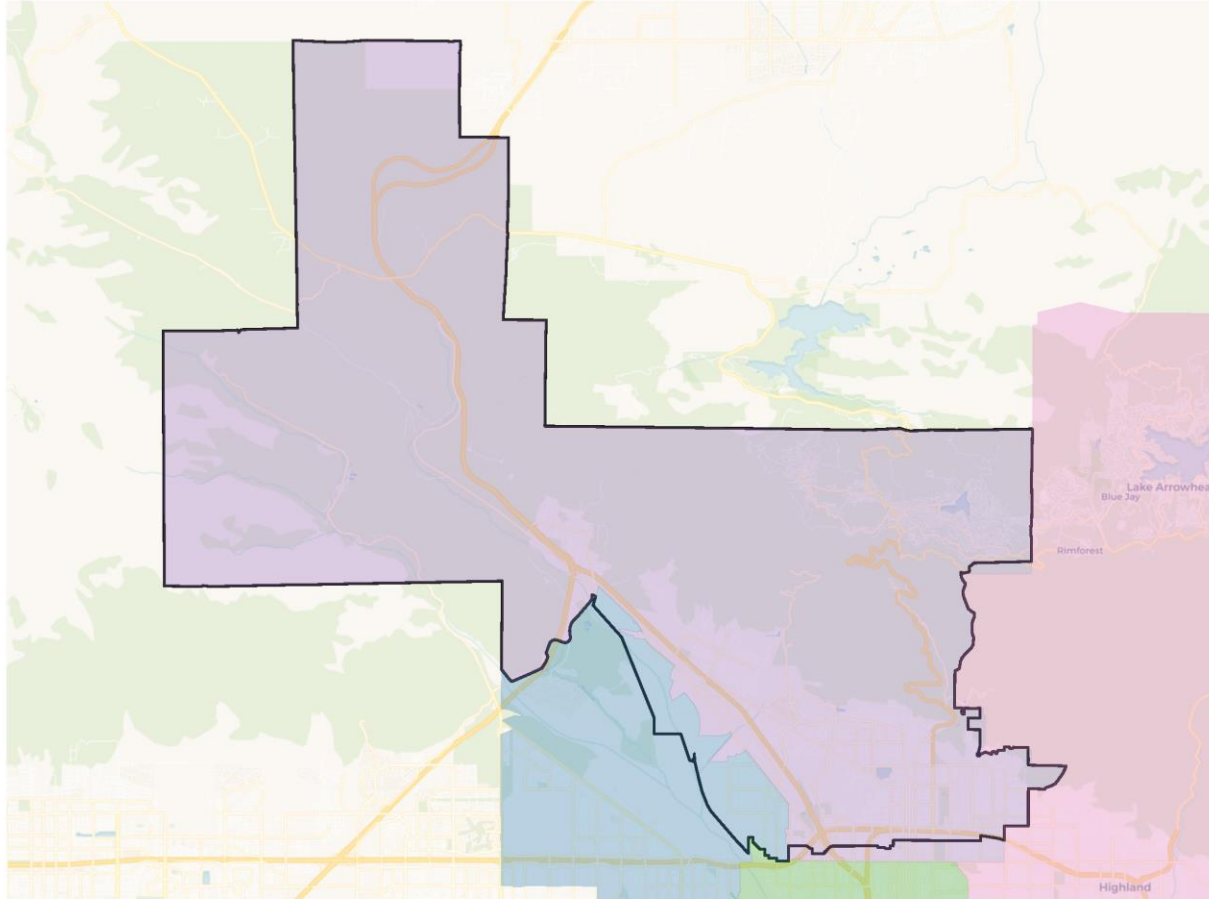


## Citizen Voting Age Population



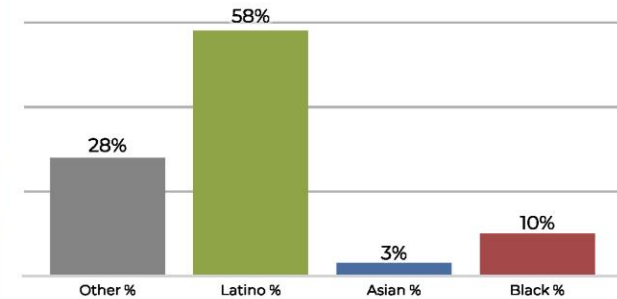
Population	Deviation	Deviation %	Other	Other %	Latino	Latino %	Asian	Asian %	Black	Black %
108,957	-407	-0.4%	45,096	41.4%	39,273	36.0%	16,863	15.5%	7,725	7.1%
Total CVAP	Other CVAP	Other CVAP %	Latino CVAP	Latino CVAP %	Asian CVAP	Asian CVAP %	Black CVAP	Black CVAP %		
72,306	36,292	50.2%	21,240	29.4%	9,043	12.5%	5,731	7.9%		

## Area 5 (Macias Harrison 2024)

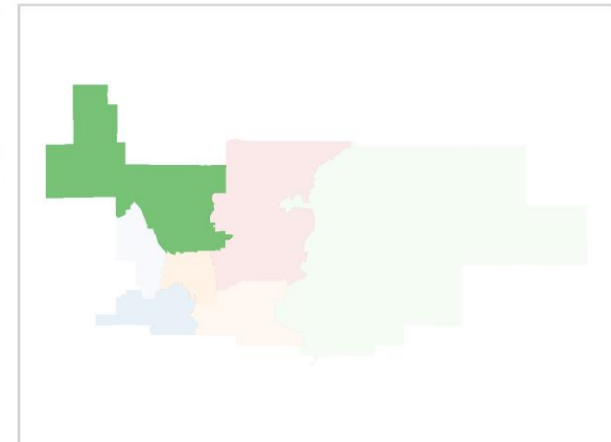
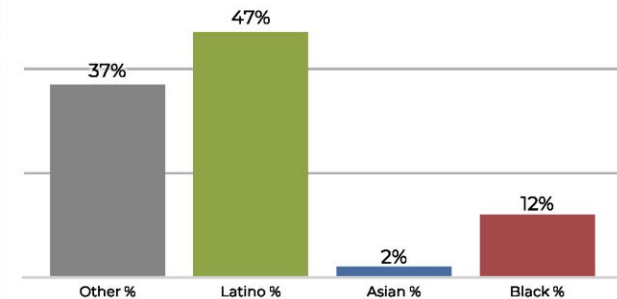


Population	Deviation	Deviation %	Other	Other %	Latino	Latino %	Asian	Asian %	Black	Black %
110,922	1,558	1.4%	31,120	28.1%	65,283	58.9%	3,310	3.0%	11,209	10.1%
Total CVAP	Other CVAP	Other CVAP %	Latino CVAP	Latino CVAP %	Asian CVAP	Asian CVAP %	Black CVAP	Black CVAP %		
67,259	25,393	37.8%	31,667	47.1%	1,955	2.9%	8,244	12.3%		

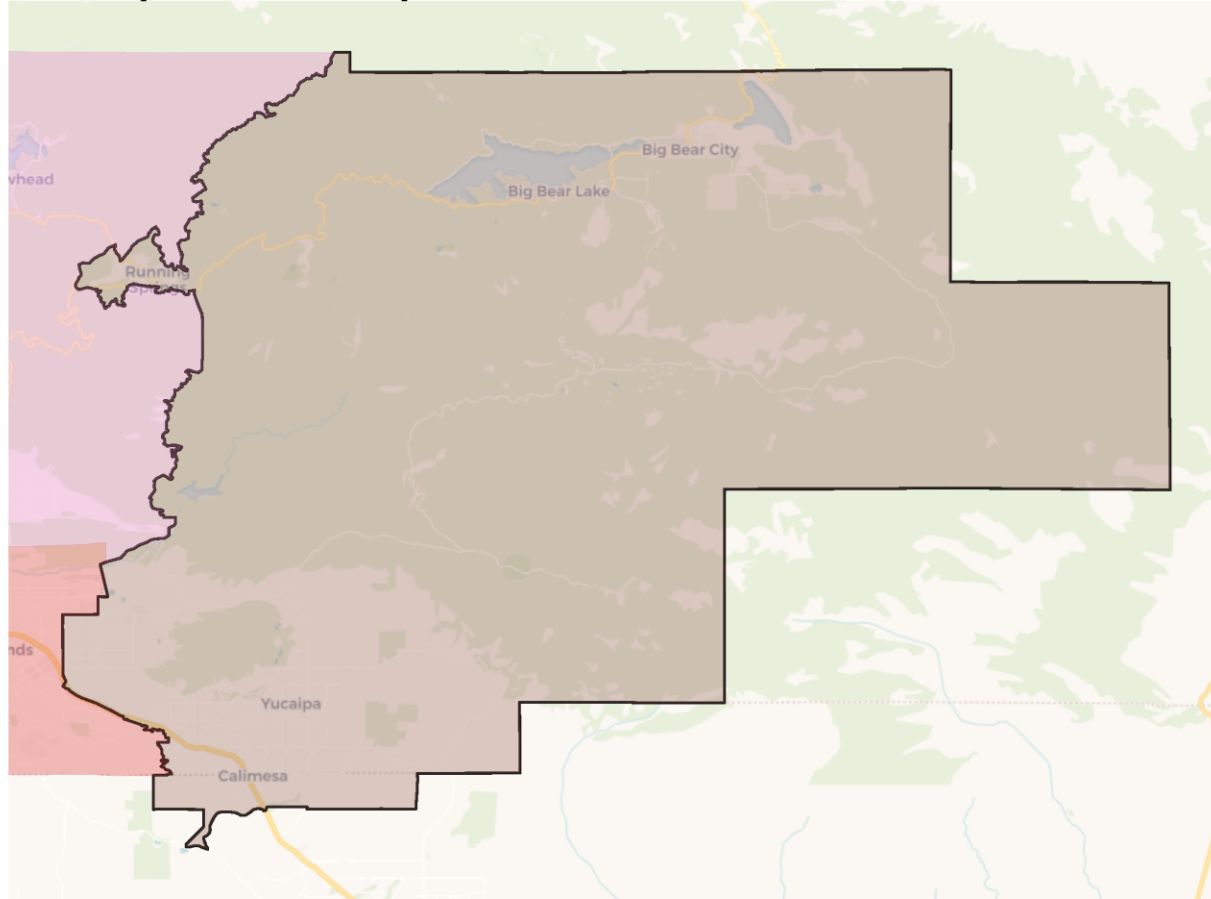
## 2020 Census



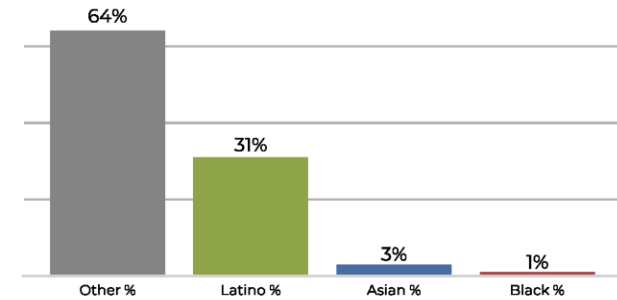
## Citizen Voting Age Population



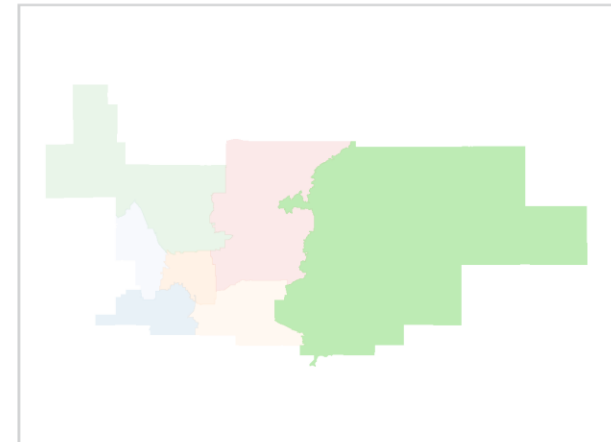
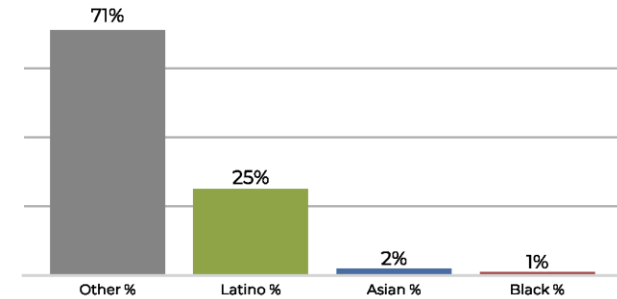
## Area 6 (Houston 2022)



## 2020 Census



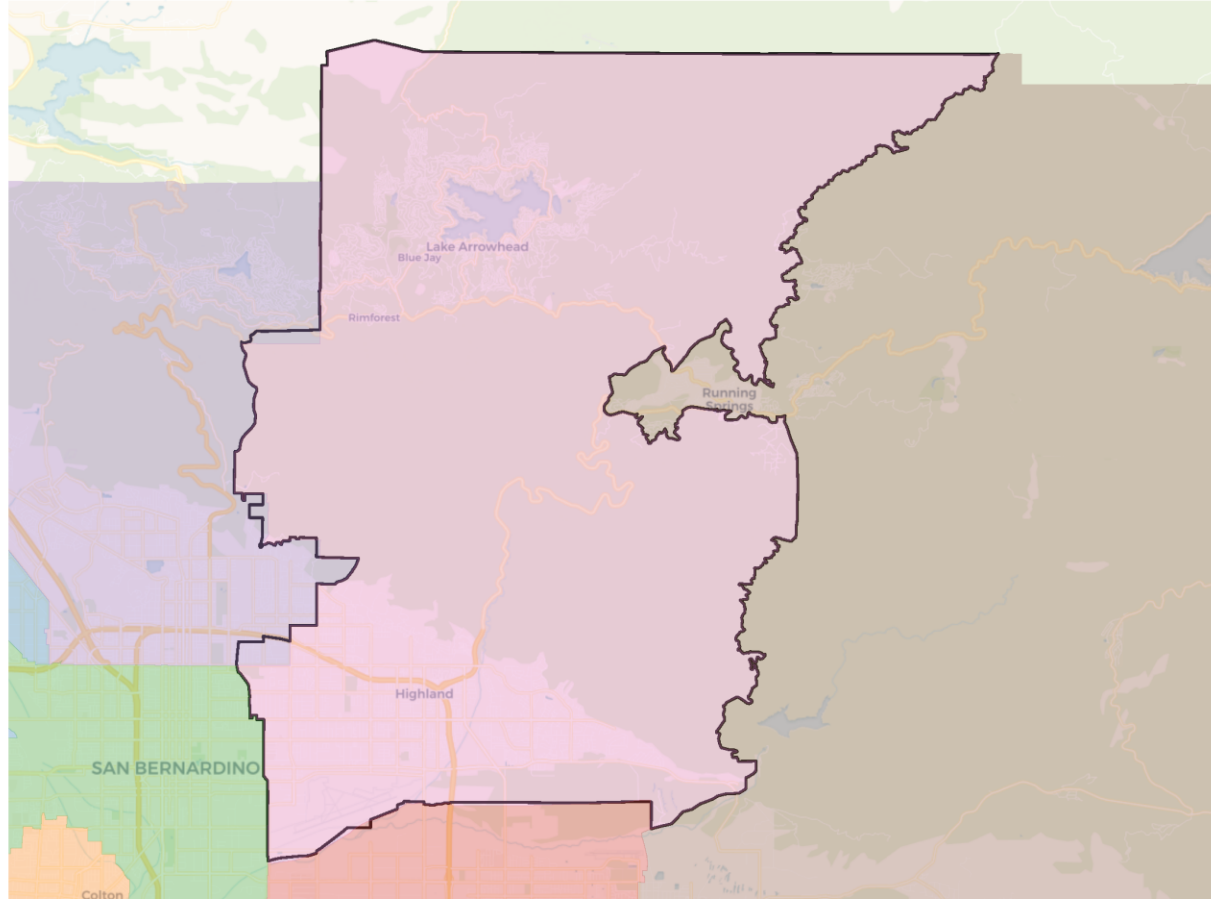
## Citizen Voting Age Population



Population	Deviation	Deviation %	Other	Other %	Latino	Latino %	Asian	Asian %	Black	Black %
108,402	-962	-0.9%	69,511	64.1%	33,718	31.1%	3,328	3.1%	1,845	1.7%
Total CVAP	Other CVAP	Other CVAP %	Latino CVAP	Latino CVAP %	Asian CVAP	Asian CVAP %	Black CVAP	Black CVAP %		
77,450	54,958	71.0%	19,337	25.0%	2,115	2.7%	1,040	1.3%		

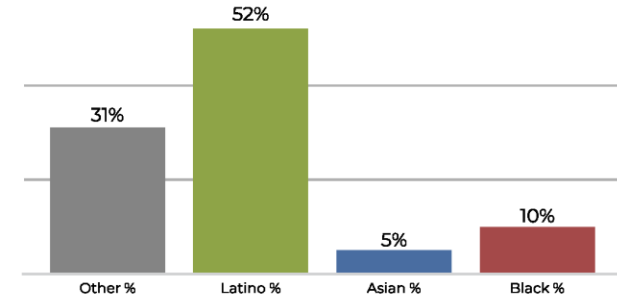


## Area 7 (Viricel 2024)

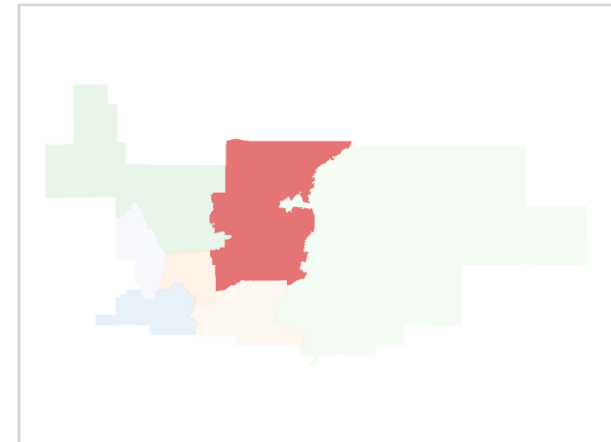
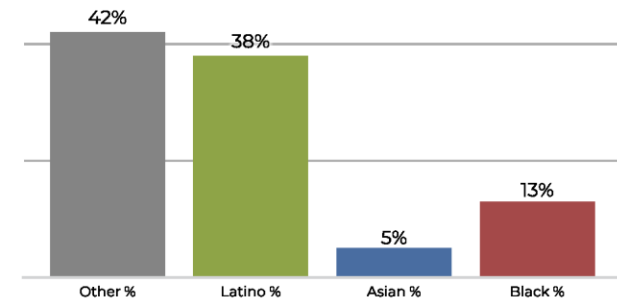


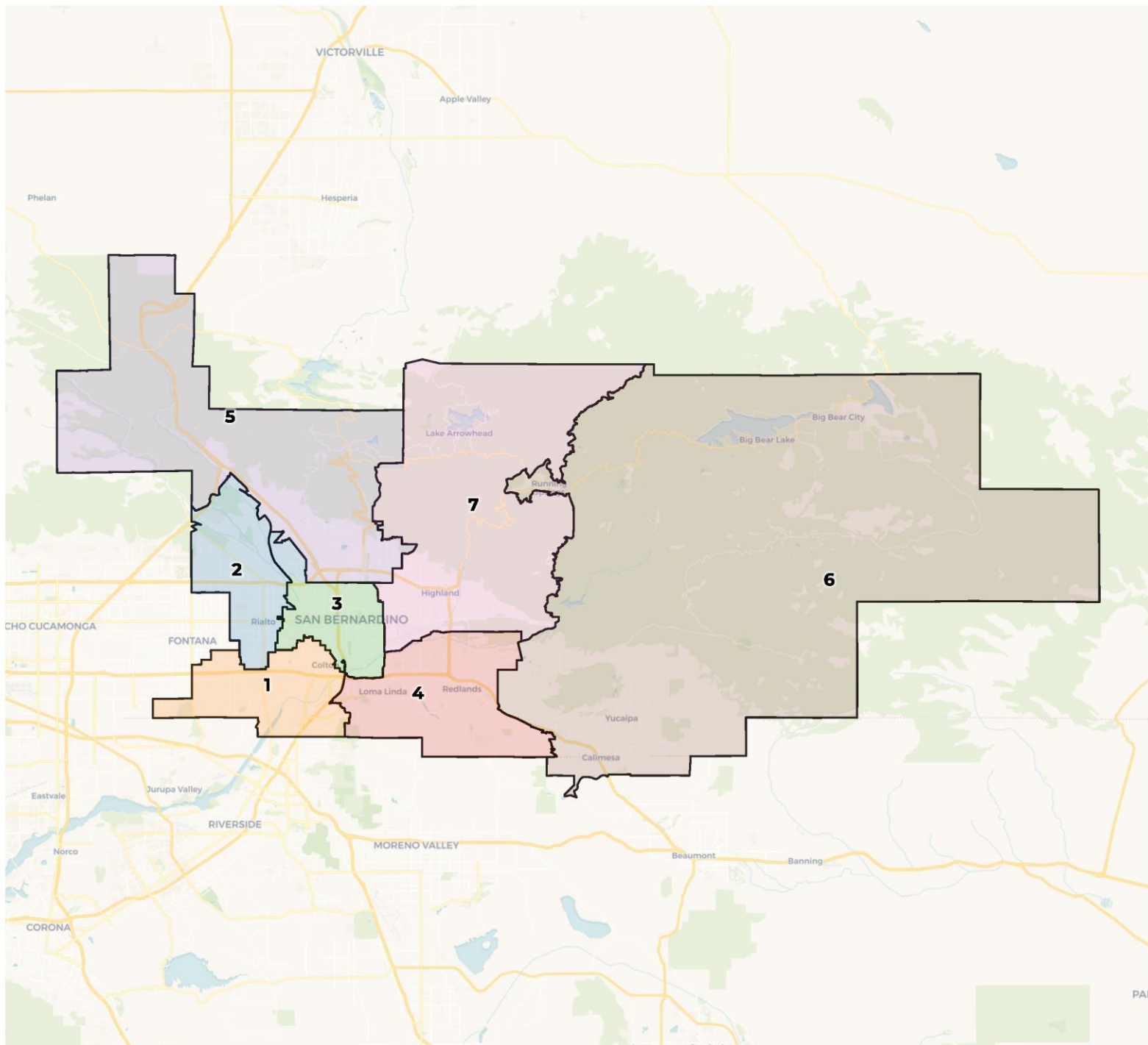
Population	Deviation	Deviation %	Other	Other %	Latino	Latino %	Asian	Asian %	Black	Black %
110,347	983	0.9%	34,443	31.2%	58,230	52.8%	6,279	5.7%	11,395	10.3%
Total CVAP	Other CVAP	Other CVAP %	Latino CVAP	Latino CVAP %	Asian CVAP	Asian CVAP %	Black CVAP	Black CVAP %		
66,665	28,174	42.3%	25,692	38.5%	3,657	5.5%	9,141	13.7%		

## 2020 Census

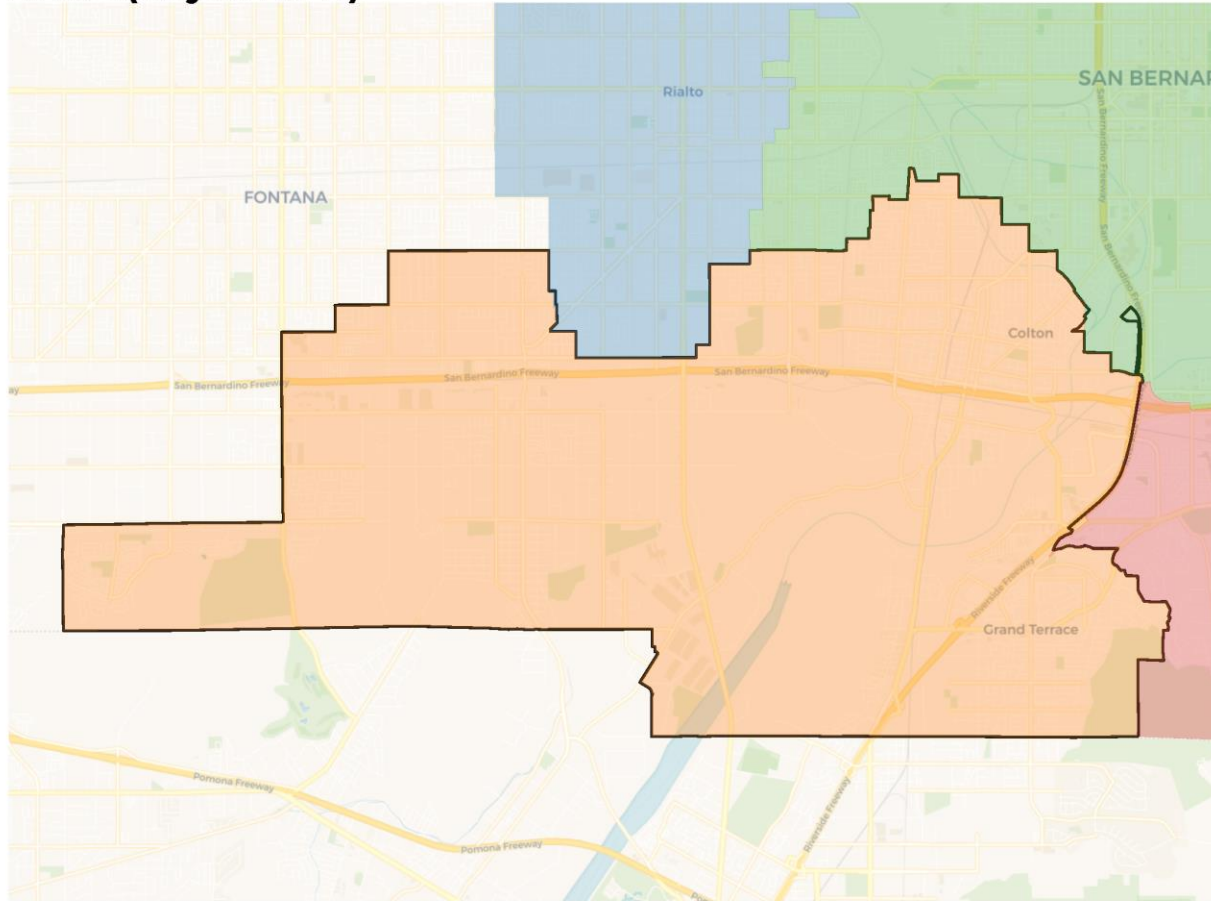


## Citizen Voting Age Population

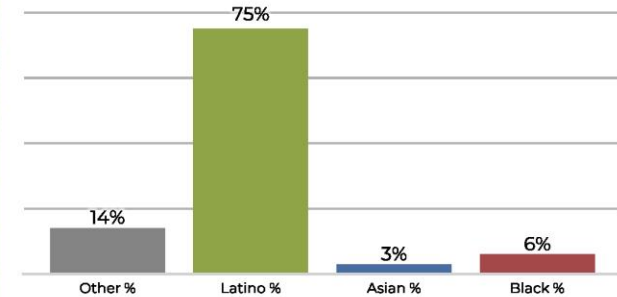




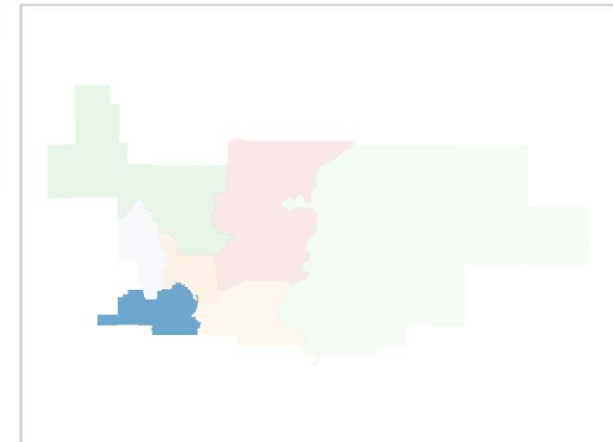
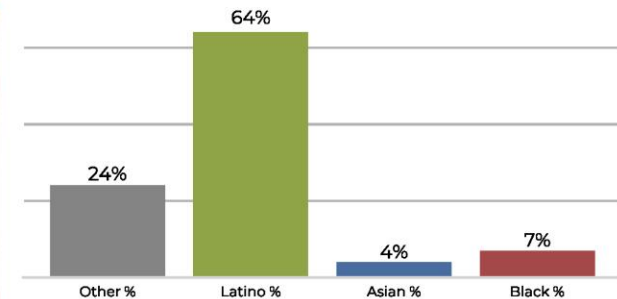
## Area 1 (Reyes 2024)



## 2020 Census

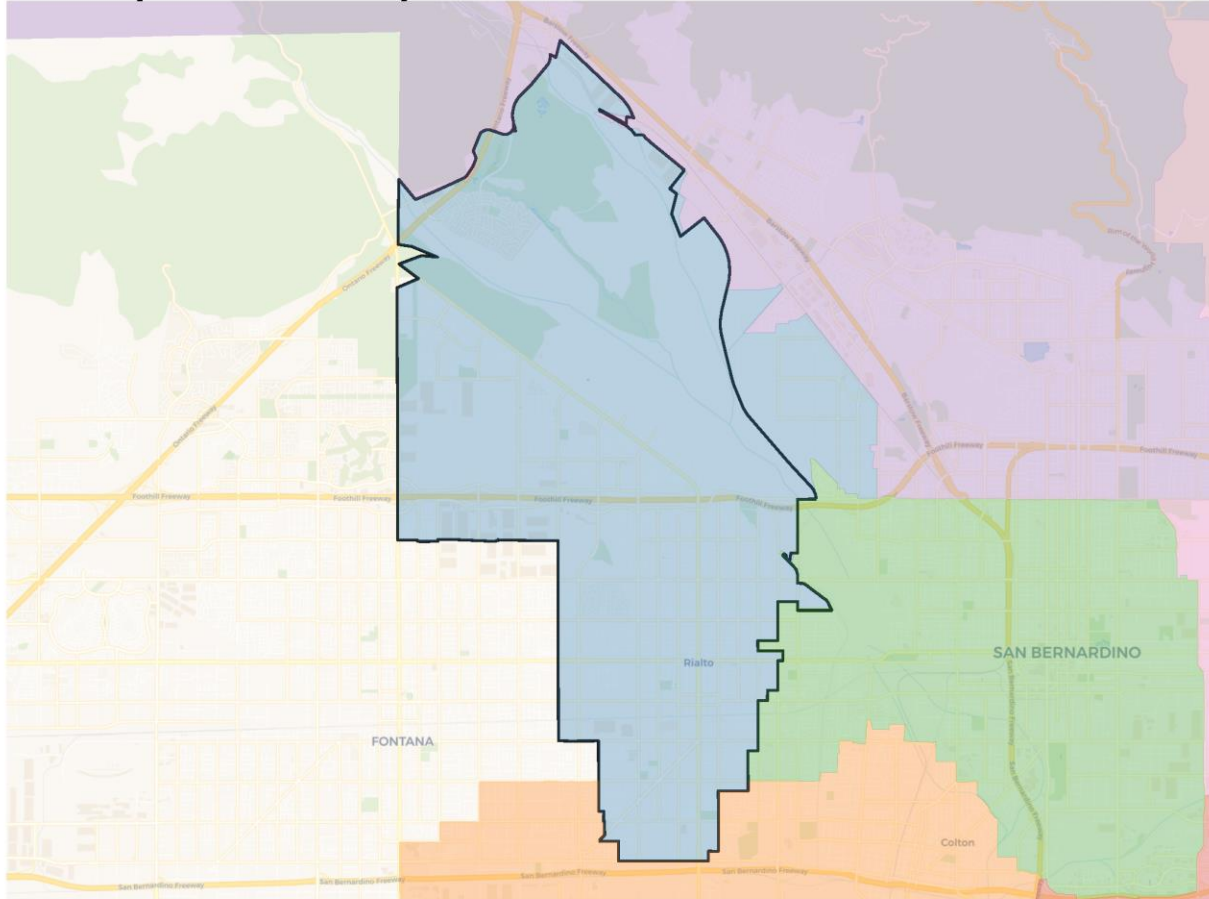


## Citizen Voting Age Population



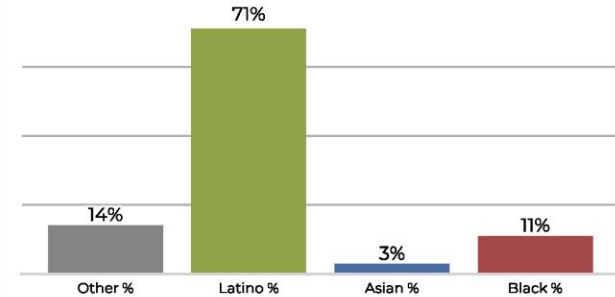
Population	Deviation	Deviation %	Other	Other %	Latino	Latino %	Asian	Asian %	Black	Black %
104,644	-4,720	-4.3%	14,858	14.2%	79,395	75.9%	3,879	3.7%	6,512	6.2%
Total CVAP	Other CVAP	Other CVAP %	Latino CVAP	Latino CVAP %	Asian CVAP	Asian CVAP %	Black CVAP	Black CVAP %		
63,957	15,327	24.0%	41,197	64.4%	2,690	4.2%	4,745	7.4%		

## Area 2 (Williams 2022)

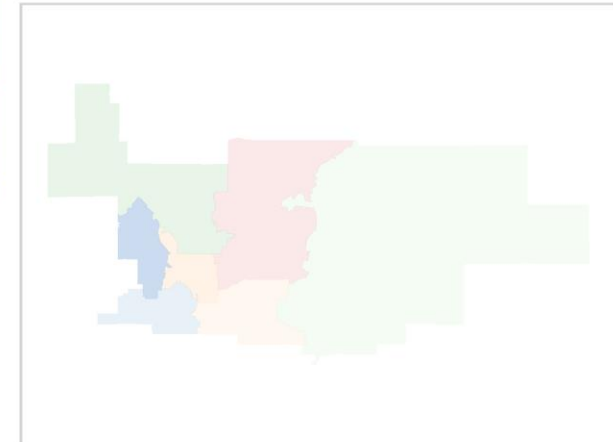
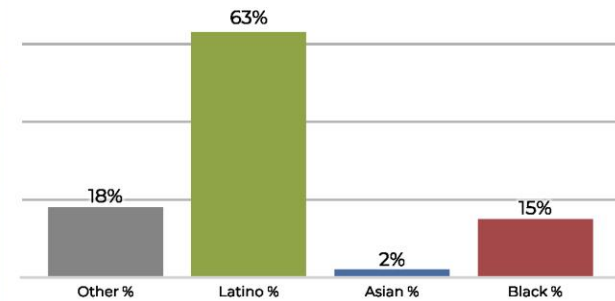


Population	Deviation	Deviation %	Other	Other %	Latino	Latino %	Asian	Asian %	Black	Black %
109,108	-256	-0.2%	15,223	14.0%	77,870	71.4%	3,420	3.1%	12,595	11.5%
Total CVAP	Other CVAP	Other CVAP %	Latino CVAP	Latino CVAP %	Asian CVAP	Asian CVAP %	Black CVAP	Black CVAP %		
61,006	11,277	18.5%	38,504	63.1%	1,612	2.6%	9,613	15.8%		

## 2020 Census

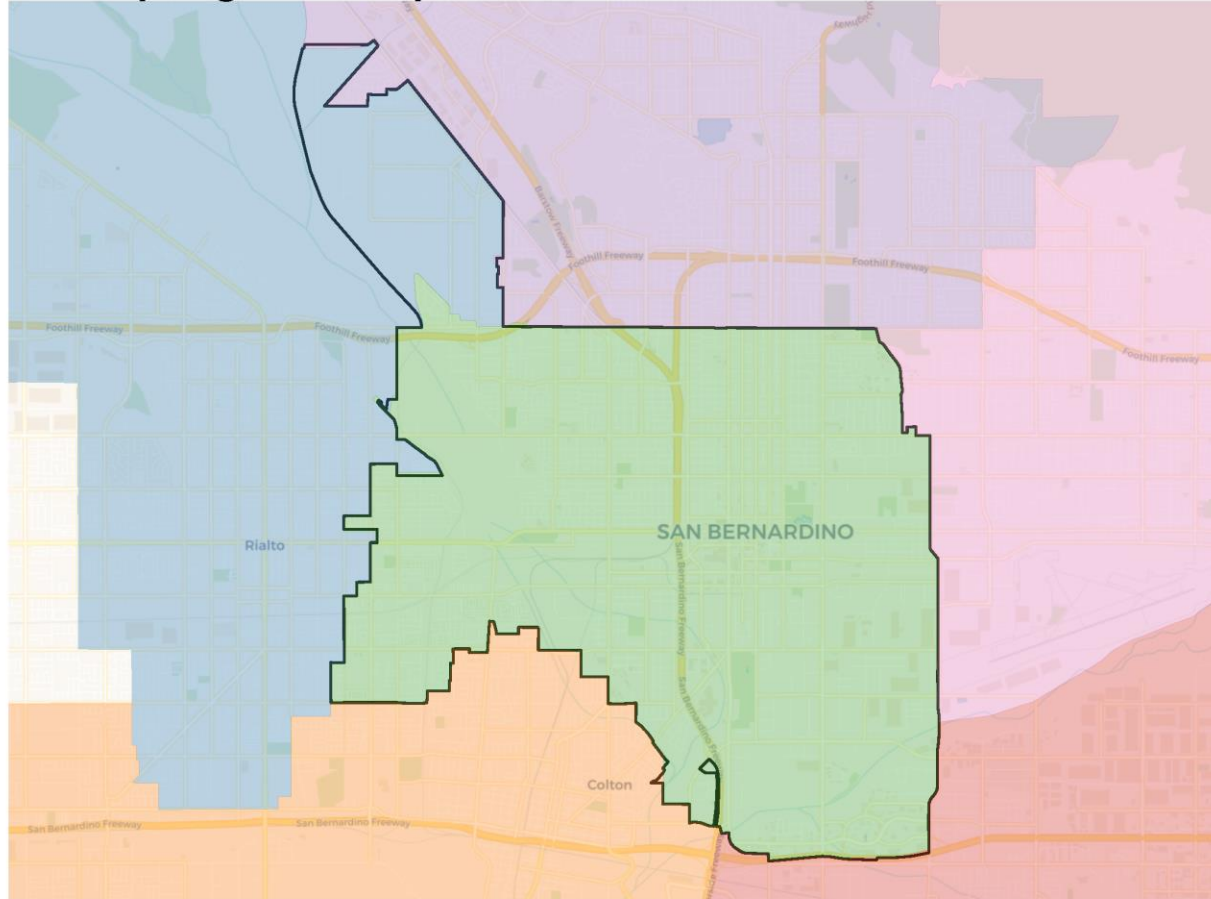


## Citizen Voting Age Population



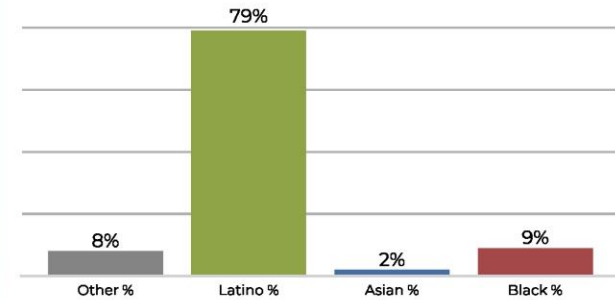


## Area 3 (Longville 2024)

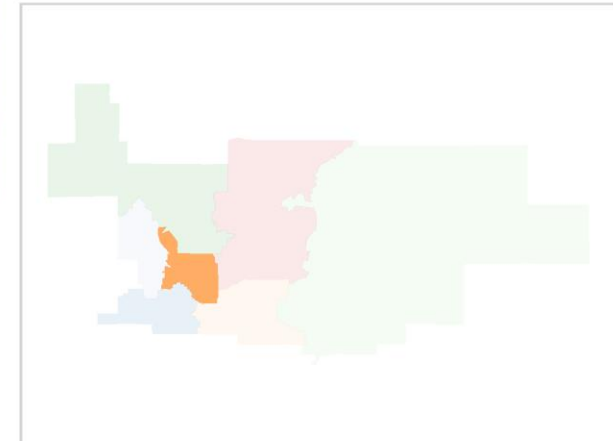
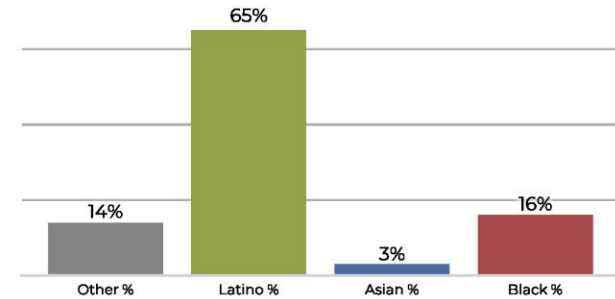


Population	Deviation	Deviation %	Other	Other %	Latino	Latino %	Asian	Asian %	Black	Black %
115,501	6,137	5.6%	9,936	8.6%	92,063	79.7%	2,590	2.2%	10,912	9.4%
Total CVAP	Other CVAP	Other CVAP %	Latino CVAP	Latino CVAP %	Asian CVAP	Asian CVAP %	Black CVAP	Black CVAP %		
55,479	8,253	14.9%	36,357	65.5%	1,822	3.3%	9,047	16.3%		

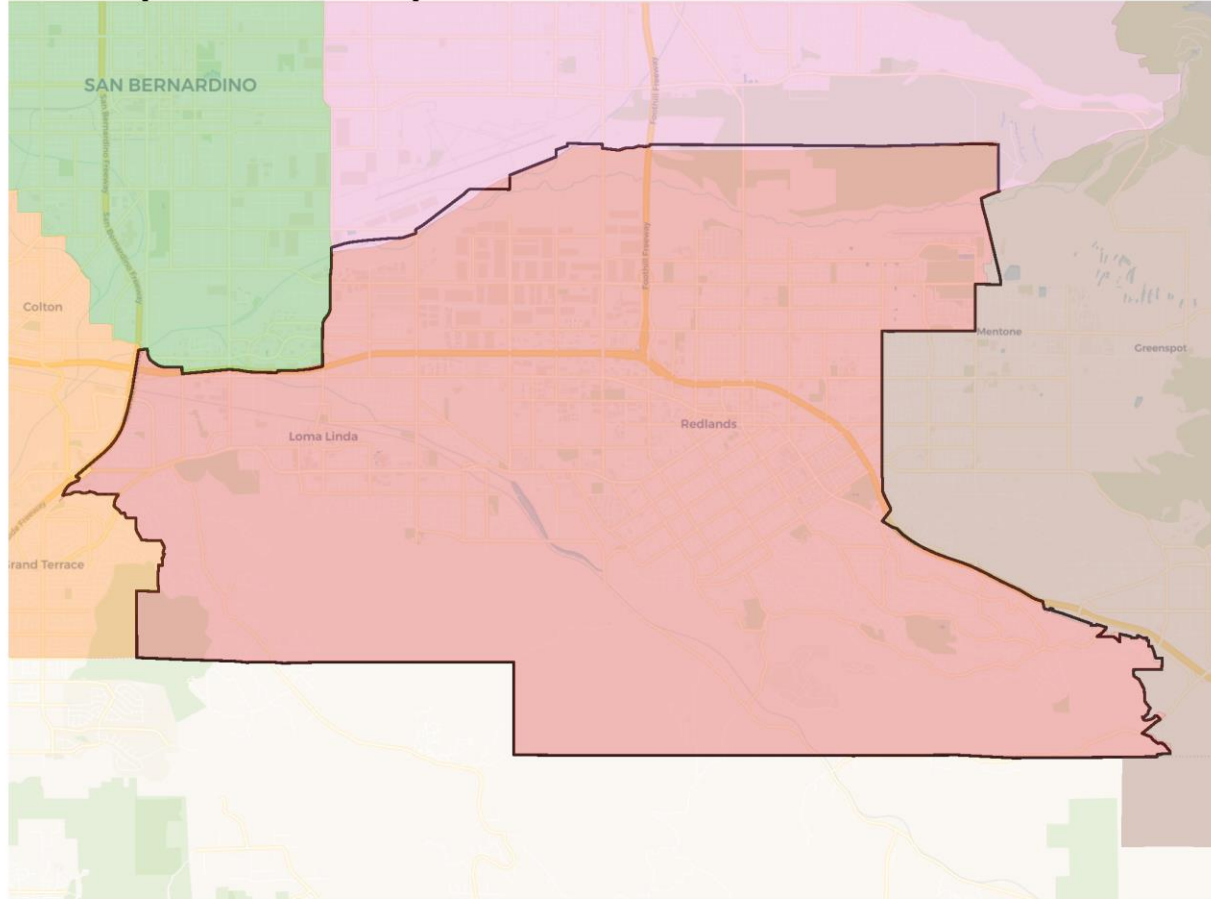
## 2020 Census



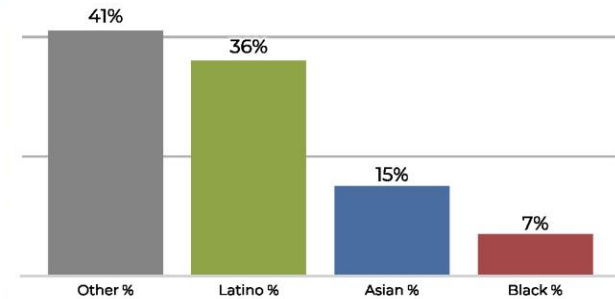
## Citizen Voting Age Population



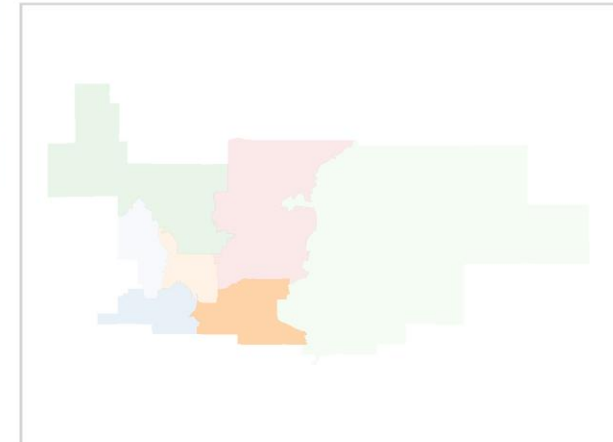
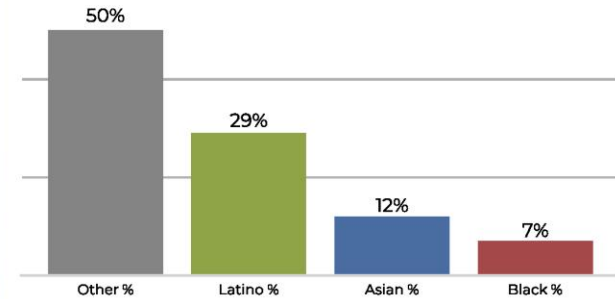
## Area 4 (Gonzales 2022)



## 2020 Census

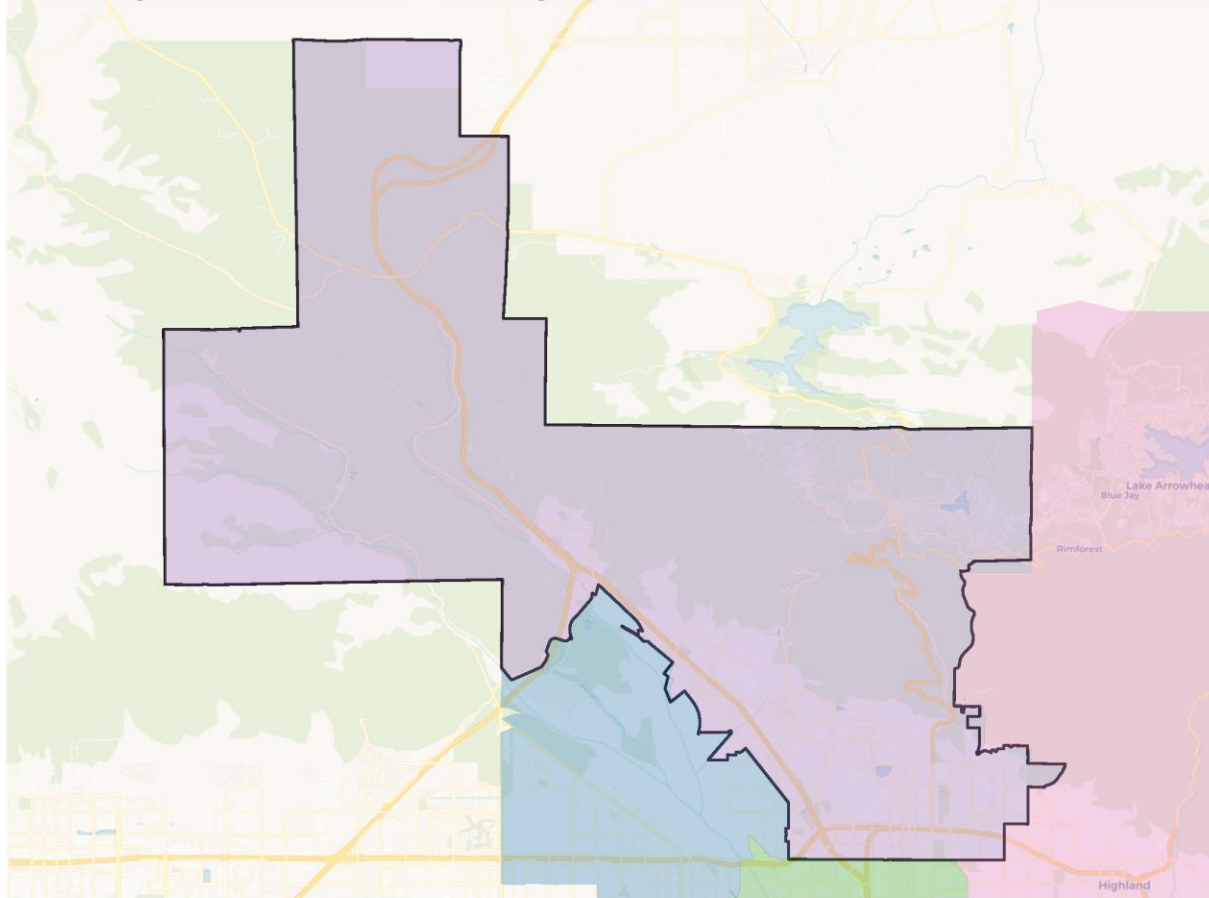


## Citizen Voting Age Population



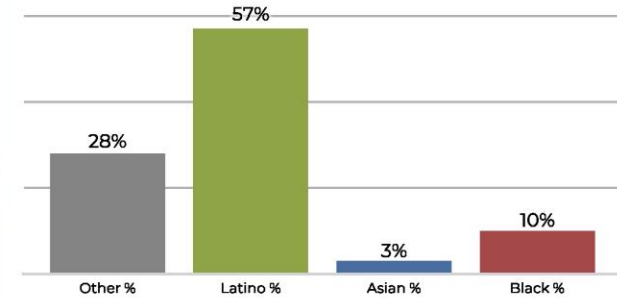
Population	Deviation	Deviation %	Other	Other %	Latino	Latino %	Asian	Asian %	Black	Black %
108,957	-407	-0.4%	45,096	41.4%	39,273	36.0%	16,863	15.5%	7,725	7.1%
Total CVAP	Other CVAP	Other CVAP %	Latino CVAP	Latino CVAP %	Asian CVAP	Asian CVAP %	Black CVAP	Black CVAP %		
72,306	36,292	50.2%	21,240	29.4%	9,043	12.5%	5,731	7.9%		

## Area 5 (Macias Harrison 2024)

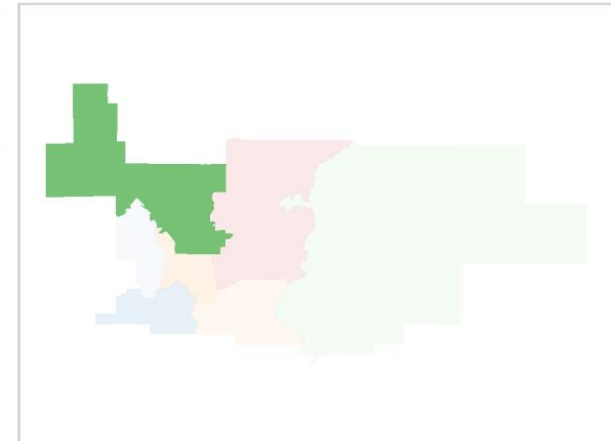
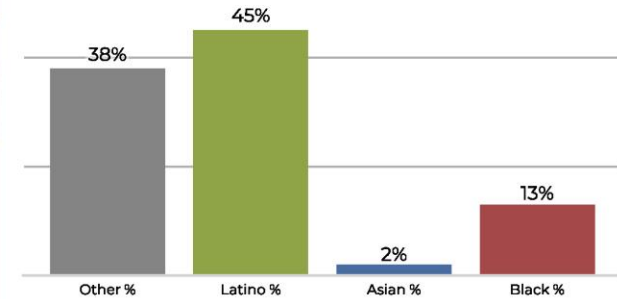


Population	Deviation	Deviation %	Other	Other %	Latino	Latino %	Asian	Asian %	Black	Black %
113,821	4,457	4.1%	32,194	28.3%	65,742	57.8%	3,463	3.0%	12,422	10.9%
Total CVAP	Other CVAP	Other CVAP %	Latino CVAP	Latino CVAP %	Asian CVAP	Asian CVAP %	Black CVAP	Black CVAP %		
68,309	26,011	38.1%	31,288	45.8%	1,853	2.7%	9,156	13.4%		

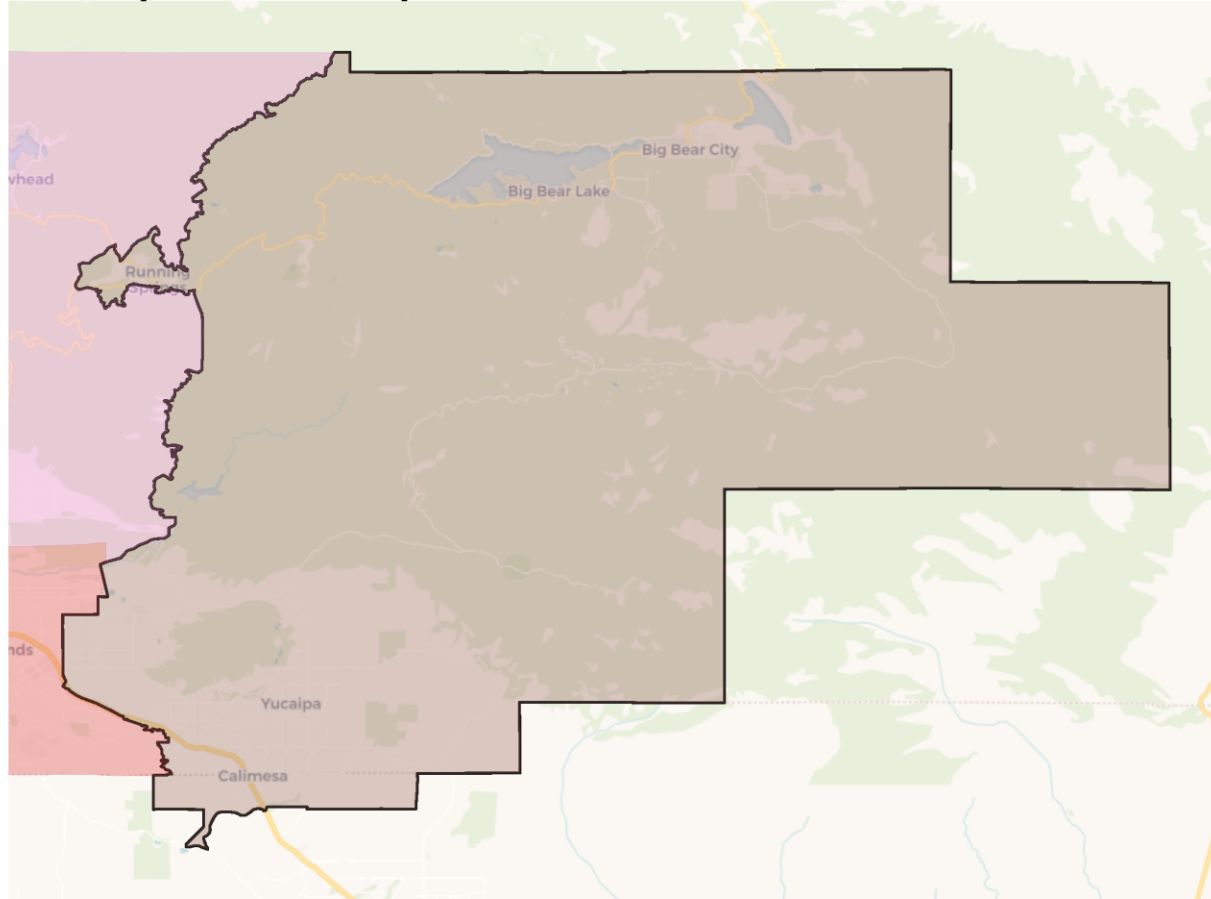
## 2020 Census



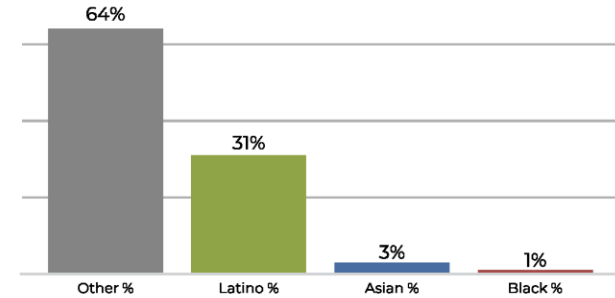
## Citizen Voting Age Population



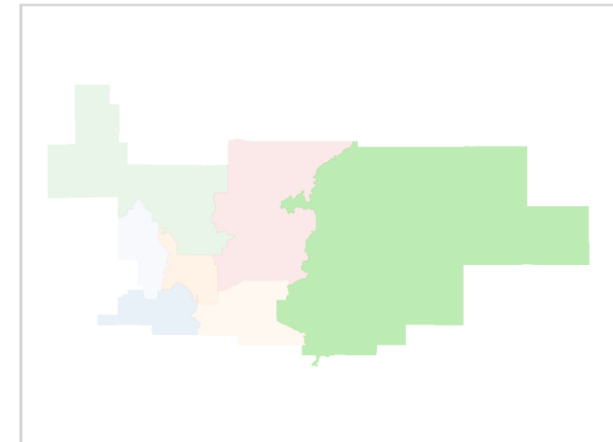
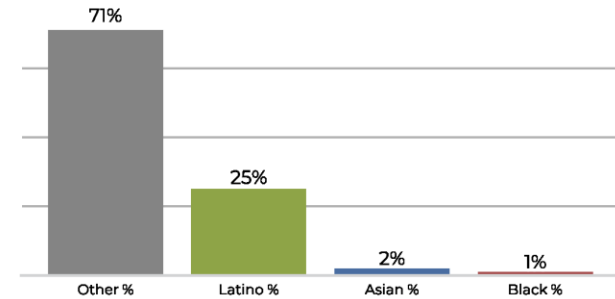
## Area 6 (Houston 2022)



## 2020 Census



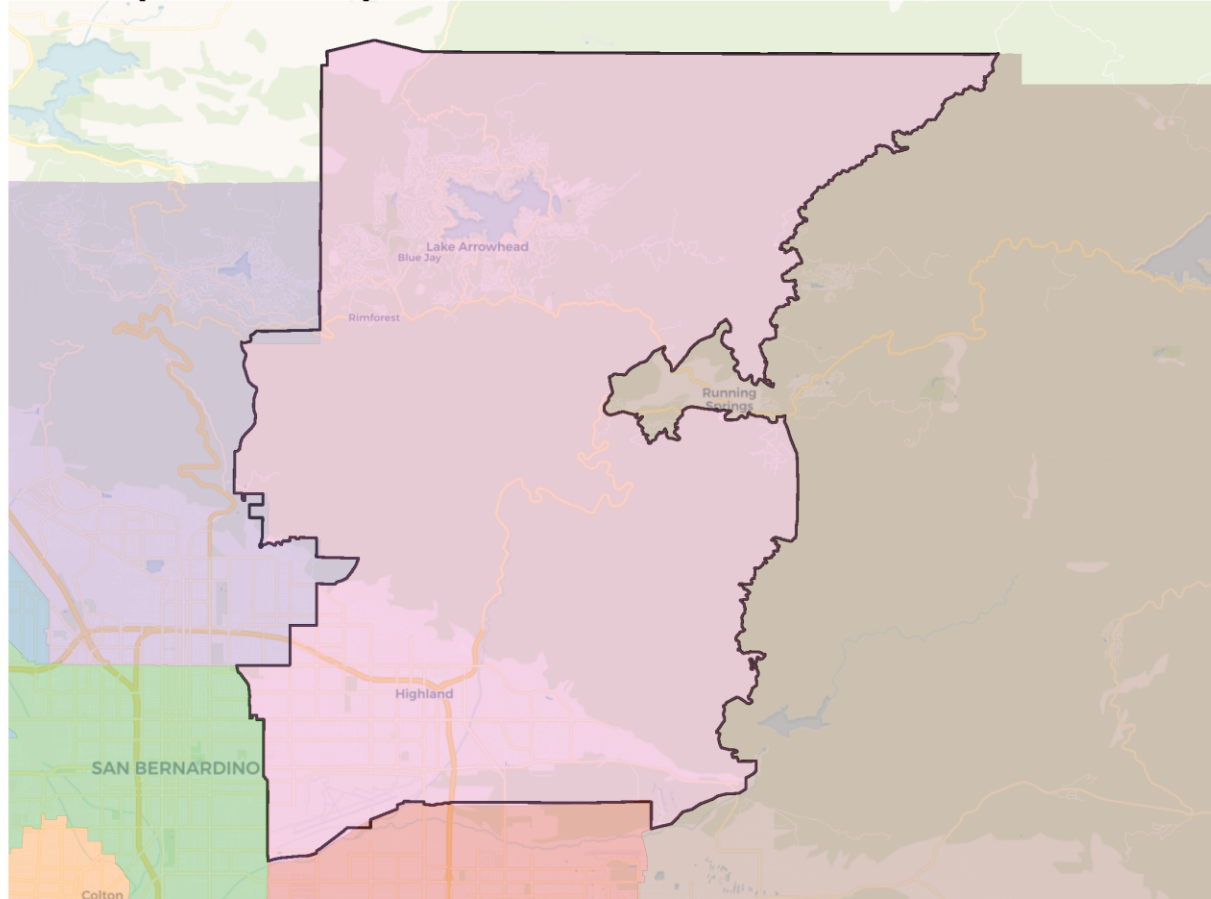
## Citizen Voting Age Population



Population	Deviation	Deviation %	Other	Other %	Latino	Latino %	Asian	Asian %	Black	Black %
108,402	-962	-0.9%	69,511	64.1%	33,718	31.1%	3,328	3.1%	1,845	1.7%
Total CVAP	Other CVAP	Other CVAP %	Latino CVAP	Latino CVAP %	Asian CVAP	Asian CVAP %	Black CVAP	Black CVAP %		
77,450	54,958	71.0%	19,337	25.0%	2,115	2.7%	1,040	1.3%		

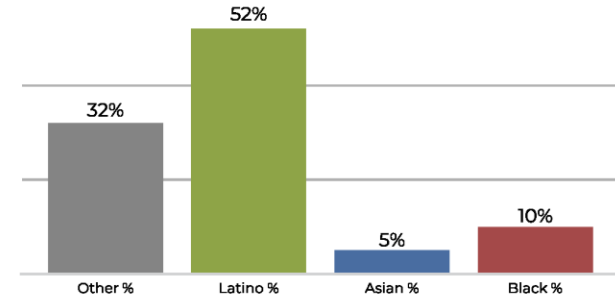


## Area 7 (Viricel 2024)

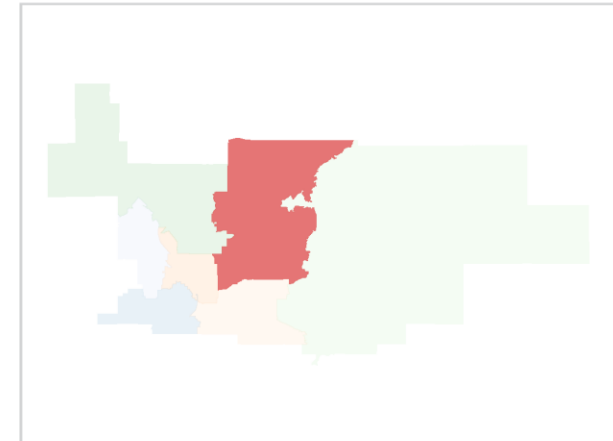
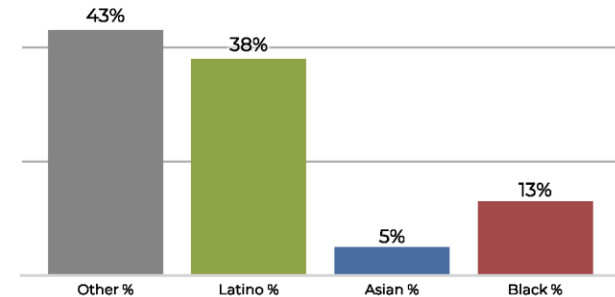


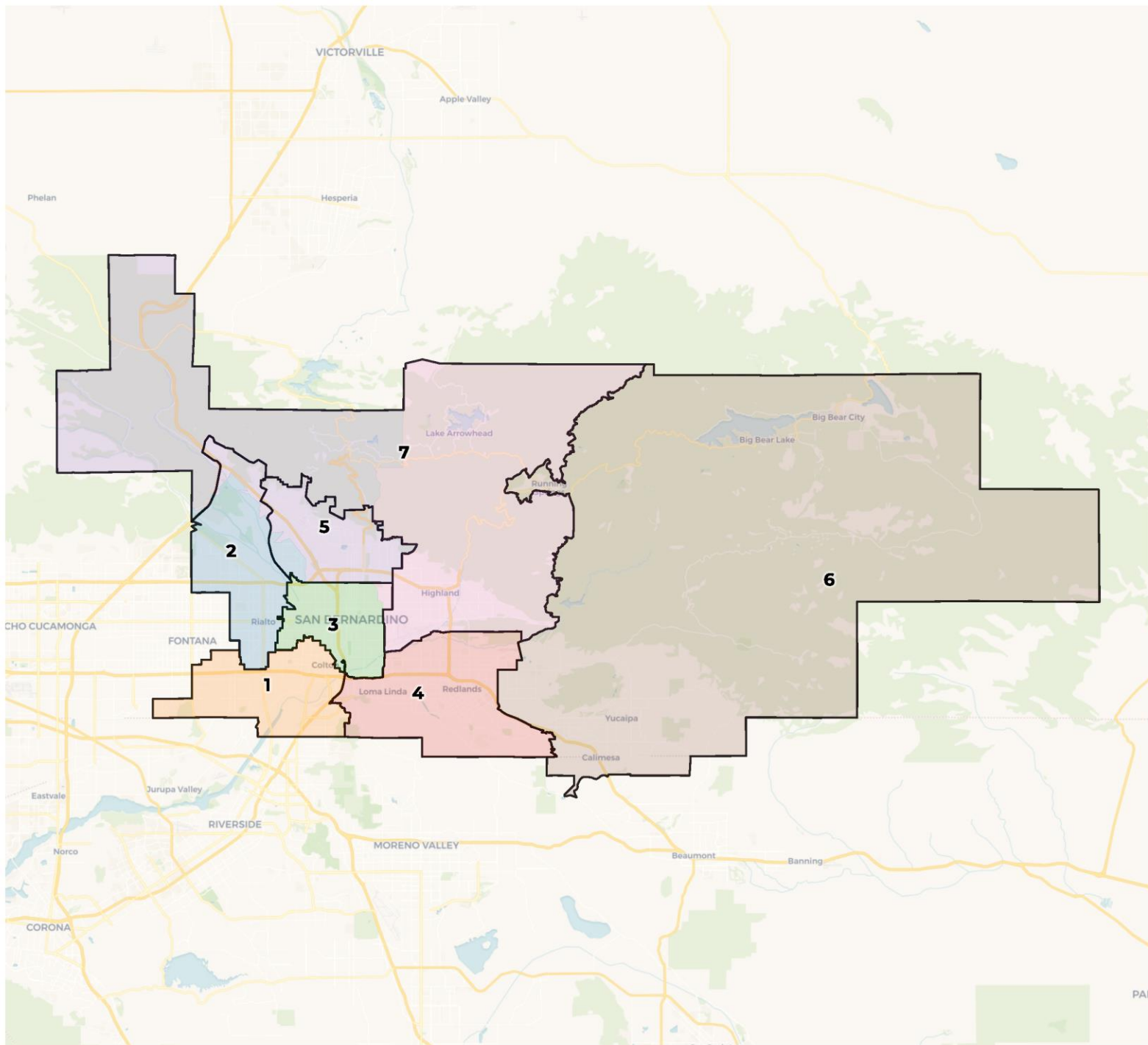
Population	Deviation	Deviation %	Other	Other %	Latino	Latino %	Asian	Asian %	Black	Black %
105,114	-4,250	-3.9%	33,584	32.0%	54,732	52.1%	6,213	5.9%	10,585	10.1%
Total CVAP	Other CVAP	Other CVAP %	Latino CVAP	Latino CVAP %	Asian CVAP	Asian CVAP %	Black CVAP	Black CVAP %		
63,973	27,653	43.2%	24,409	38.2%	3,604	5.6%	8,307	13.0%		

## 2020 Census

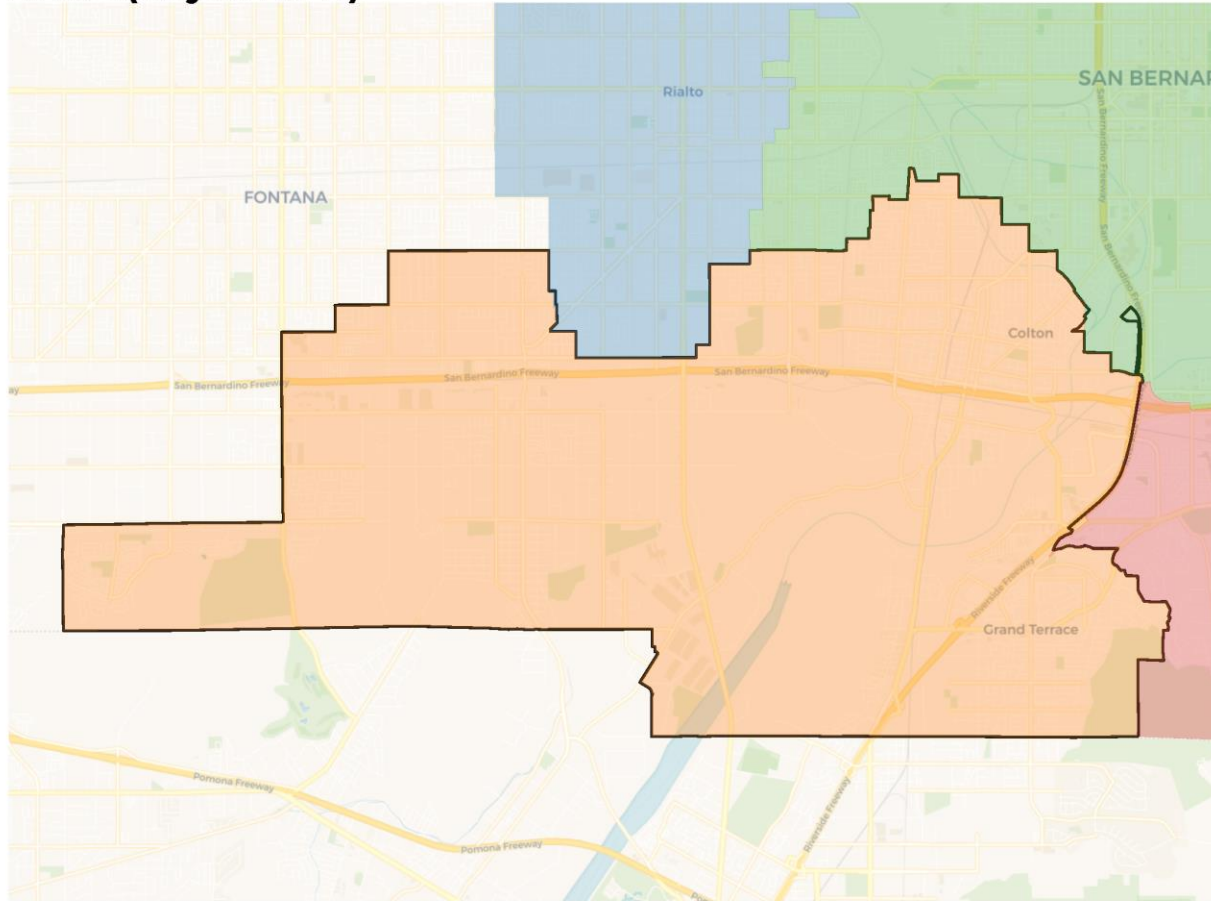


## Citizen Voting Age Population

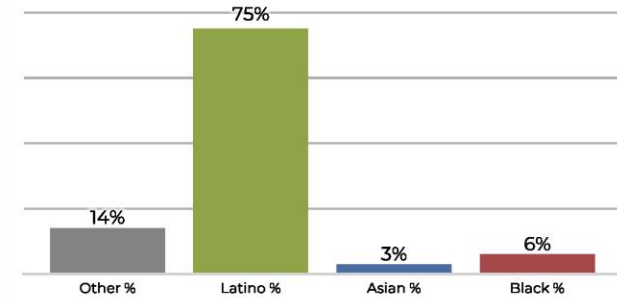




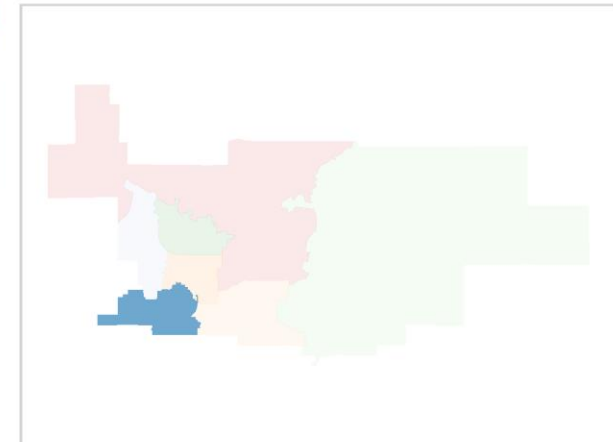
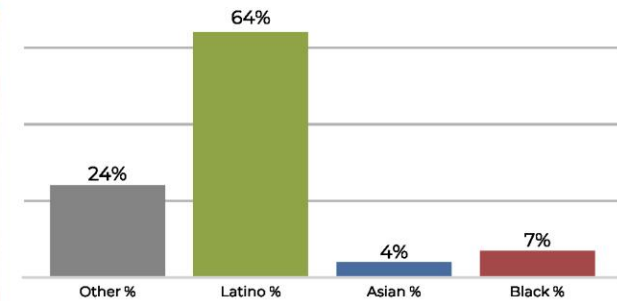
## Area 1 (Reyes 2024)



## 2020 Census

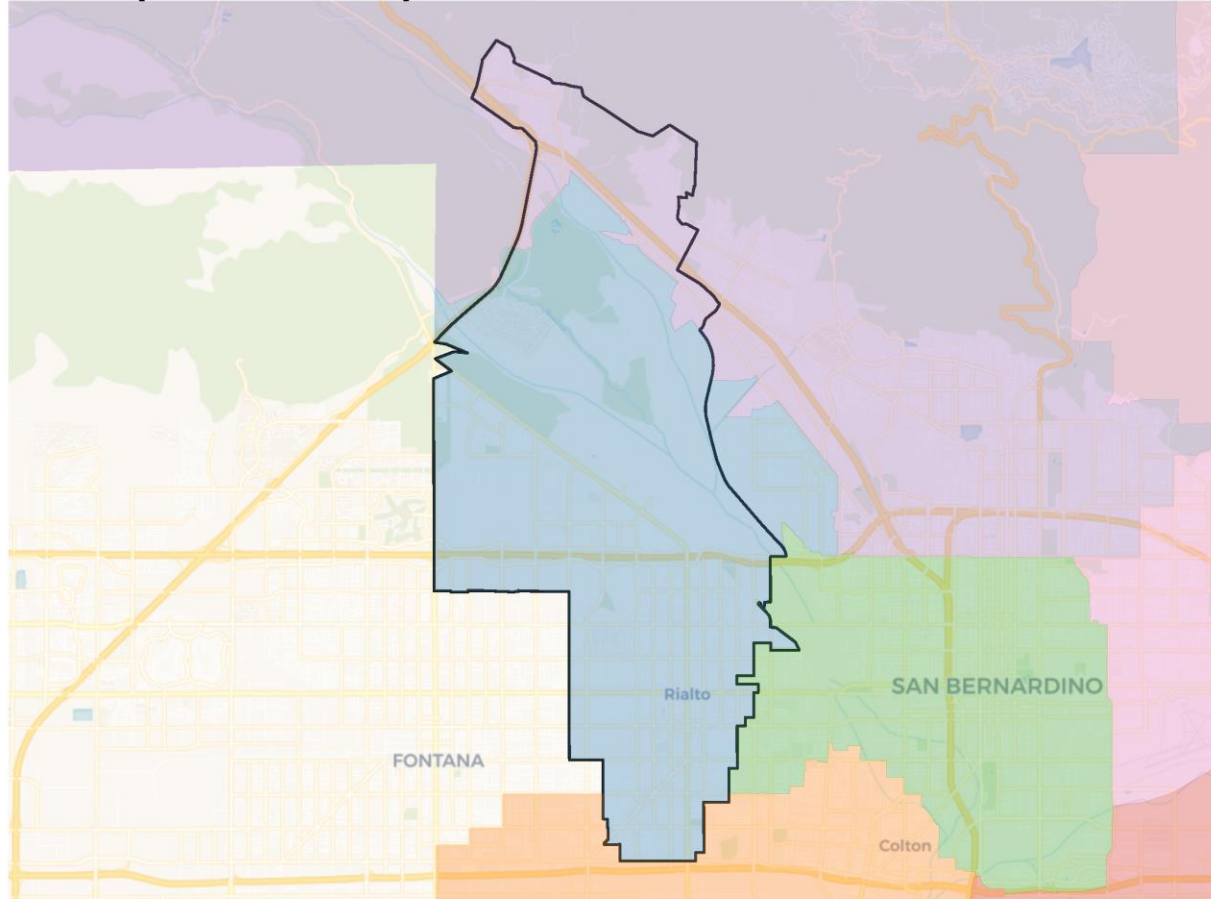


## Citizen Voting Age Population



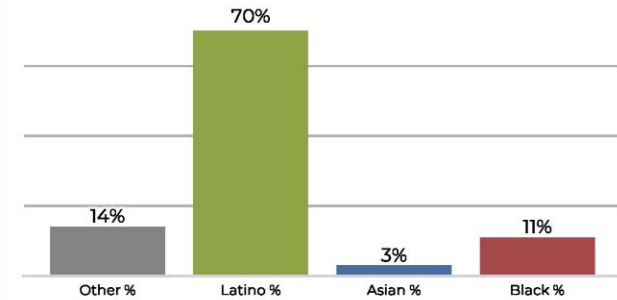
Population	Deviation	Deviation %	Other	Other %	Latino	Latino %	Asian	Asian %	Black	Black %
104,644	-4,720	-4.3%	14,858	14.2%	79,395	75.9%	3,879	3.7%	6,512	6.2%
Total CVAP	Other CVAP	Other CVAP %	Latino CVAP	Latino CVAP %	Asian CVAP	Asian CVAP %	Black CVAP	Black CVAP %		
63,957	15,327	24.0%	41,197	64.4%	2,690	4.2%	4,745	7.4%		

## Area 2 (Williams 2022)

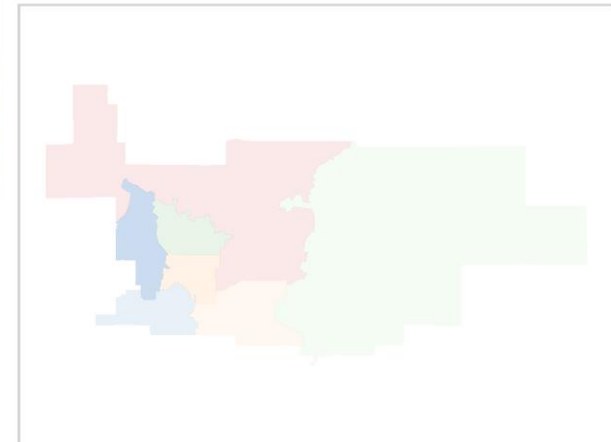
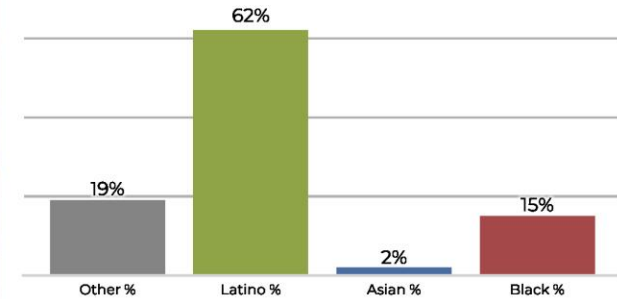


Population	Deviation	Deviation %	Other	Other %	Latino	Latino %	Asian	Asian %	Black	Black %
110,887	1,523	1.4%	16,285	14.7%	78,477	70.8%	3,479	3.1%	12,646	11.4%
Total CVAP	Other CVAP	Other CVAP %	Latino CVAP	Latino CVAP %	Asian CVAP	Asian CVAP %	Black CVAP	Black CVAP %		
62,911	12,350	19.6%	39,178	62.3%	1,647	2.6%	9,736	15.5%		

## 2020 Census

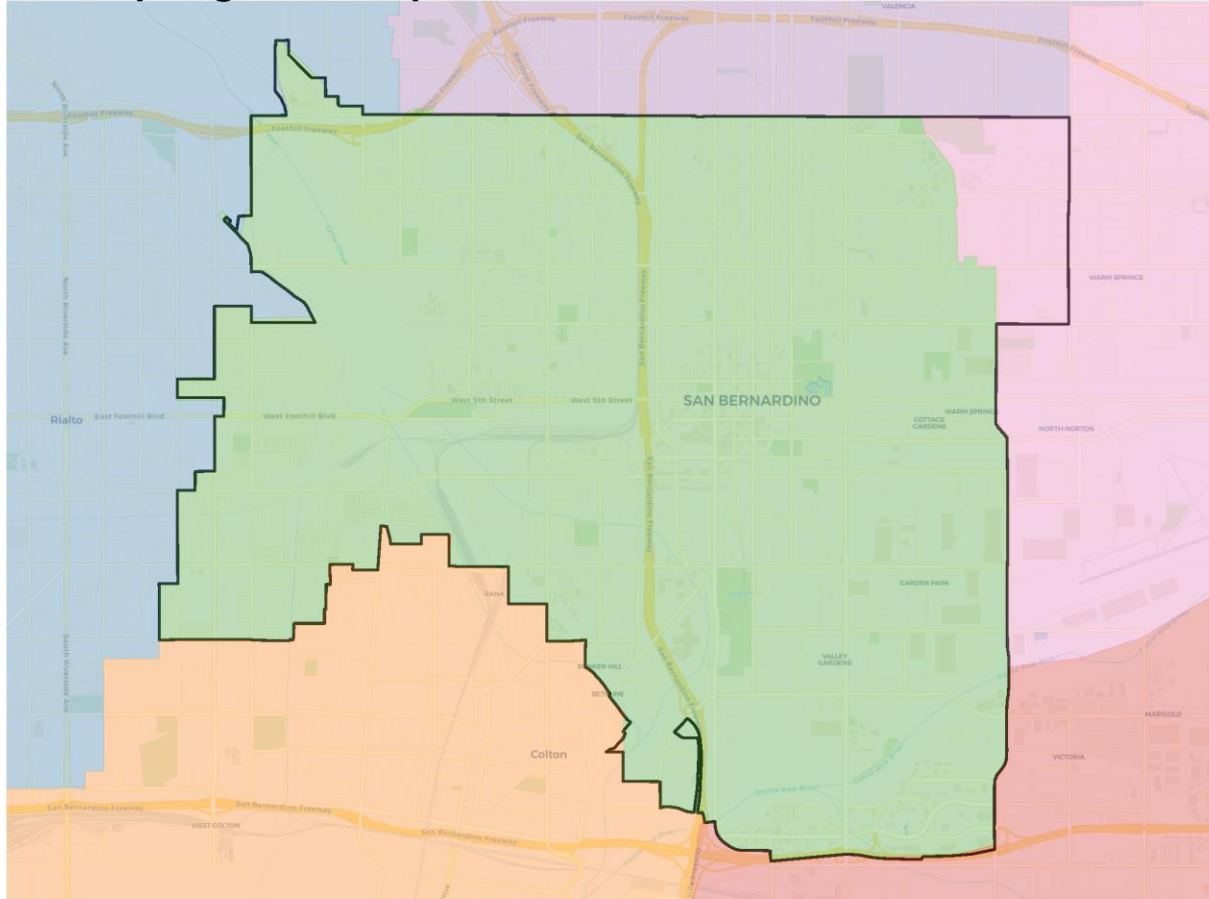


## Citizen Voting Age Population



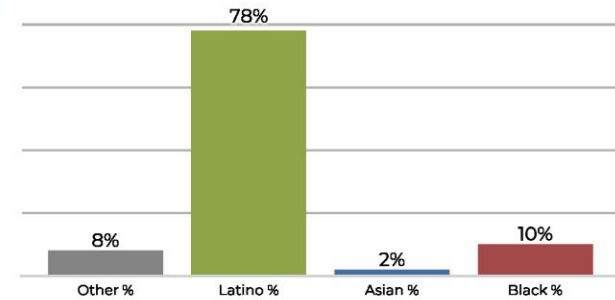


## Area 3 (Longville 2024)

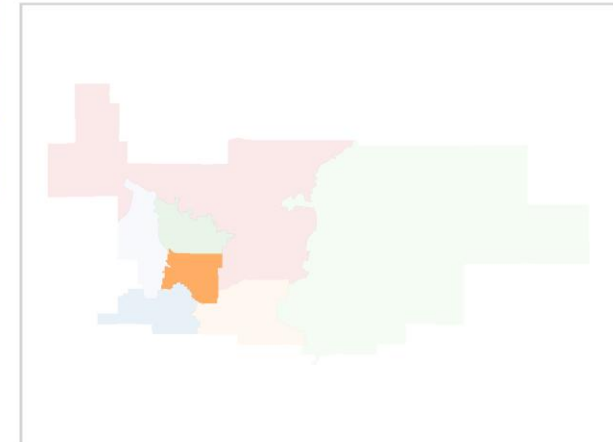
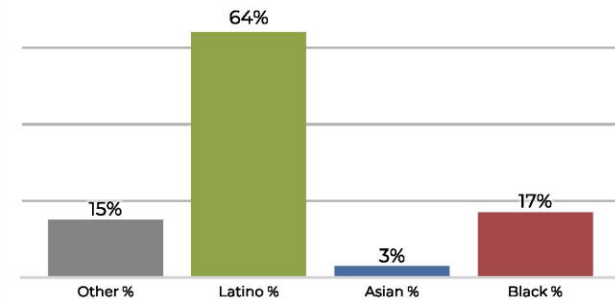


Population	Deviation	Deviation %	Other	Other %	Latino	Latino %	Asian	Asian %	Black	Black %
111,223	1,859	1.7%	9,863	8.9%	87,236	78.4%	2,678	2.4%	11,446	10.3%
Total CVAP	Other CVAP	Other CVAP %	Latino CVAP	Latino CVAP %	Asian CVAP	Asian CVAP %	Black CVAP	Black CVAP %		
53,097	8,168	15.4%	34,147	64.3%	1,724	3.2%	9,058	17.1%		

## 2020 Census

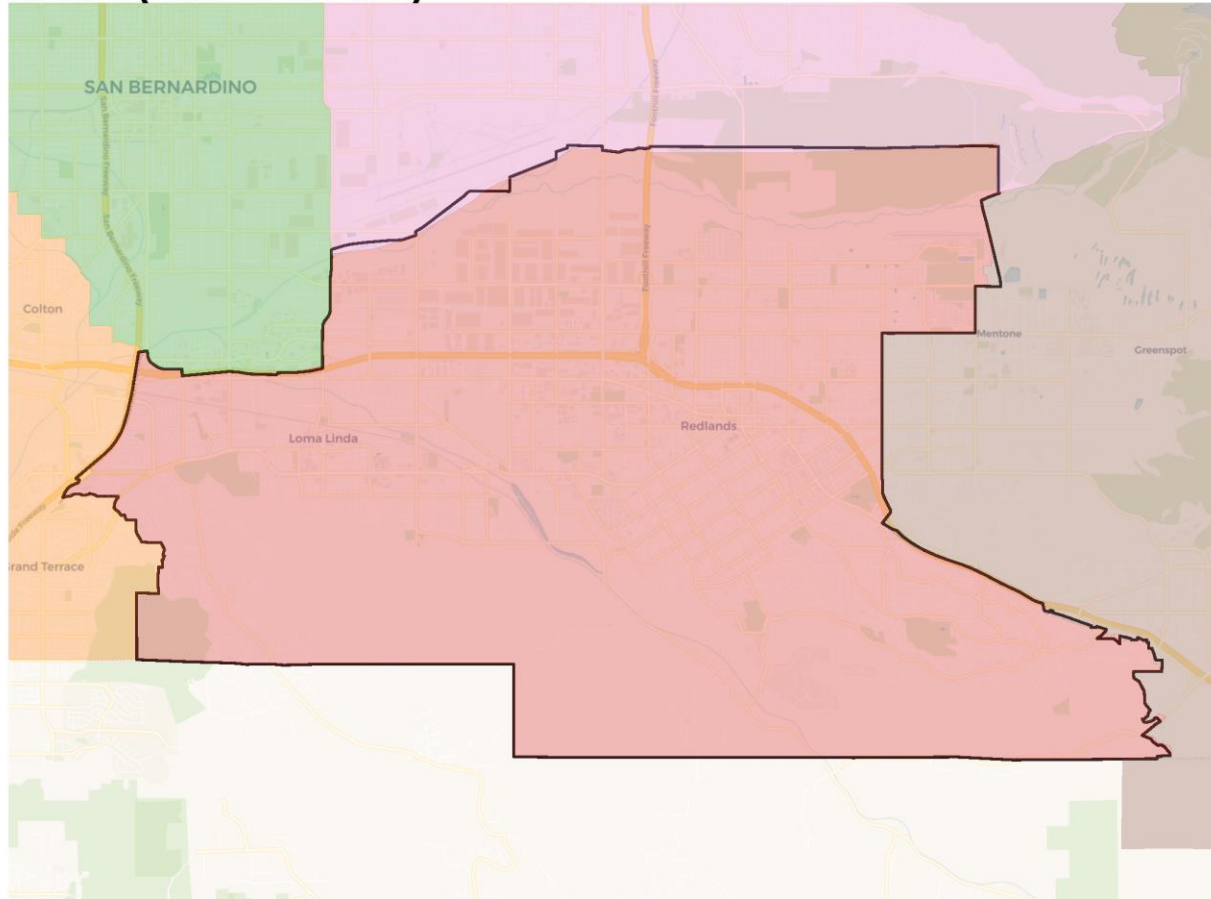


## Citizen Voting Age Population

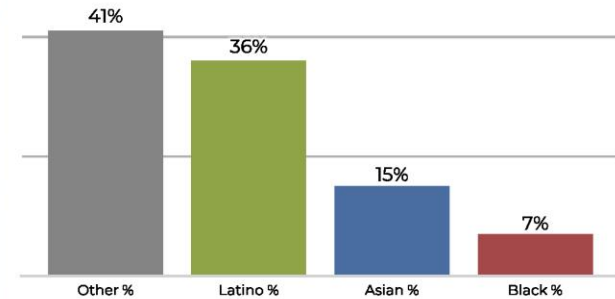




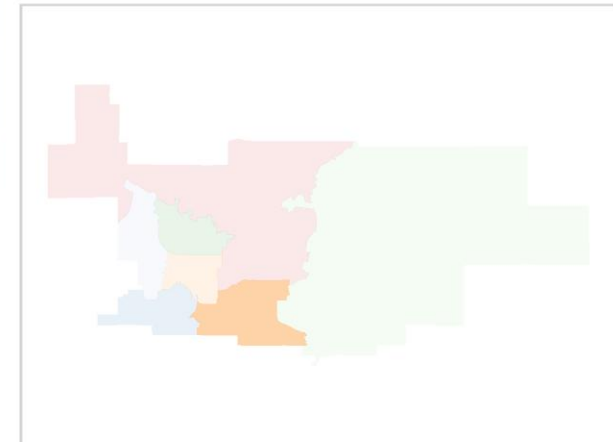
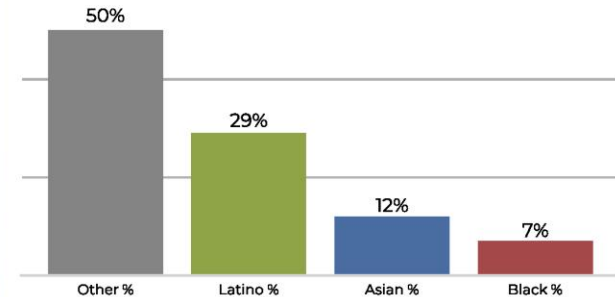
## Area 4 (Gonzales 2022)



## 2020 Census

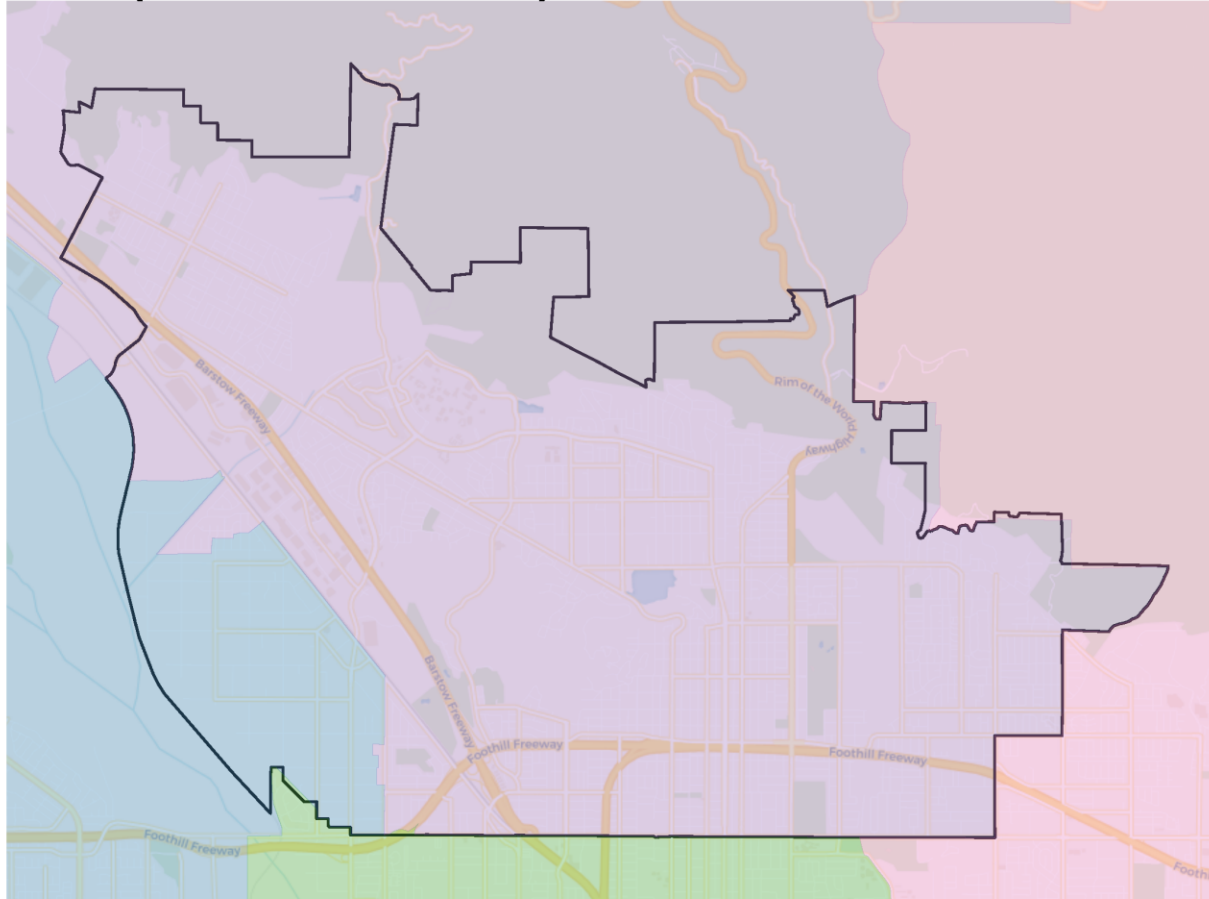


## Citizen Voting Age Population



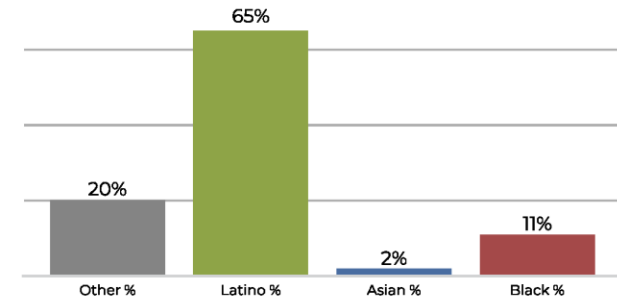
Population	Deviation	Deviation %	Other	Other %	Latino	Latino %	Asian	Asian %	Black	Black %
108,957	-407	-0.4%	45,096	41.4%	39,273	36.0%	16,863	15.5%	7,725	7.1%
Total CVAP	Other CVAP	Other CVAP %	Latino CVAP	Latino CVAP %	Asian CVAP	Asian CVAP %	Black CVAP	Black CVAP %		
72,306	36,292	50.2%	21,240	29.4%	9,043	12.5%	5,731	7.9%		

## Area 5 (Macias Harrison 2024)

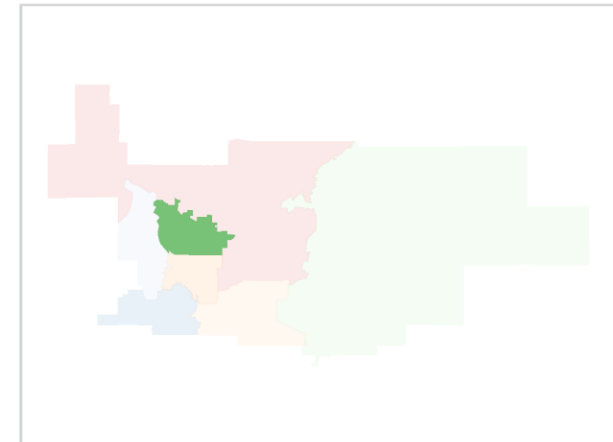
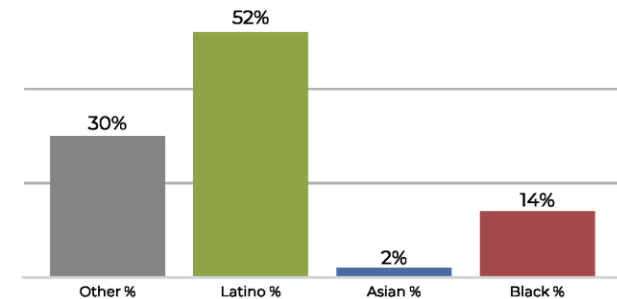


Population	Deviation	Deviation %	Other	Other %	Latino	Latino %	Asian	Asian %	Black	Black %
109,937	573	0.5%	22,772	20.7%	71,448	65.0%	3,237	2.9%	12,480	11.4%
Total CVAP	Other CVAP	Other CVAP %	Latino CVAP	Latino CVAP %	Asian CVAP	Asian CVAP %	Black CVAP	Black CVAP %		
63,832	19,215	30.1%	33,512	52.5%	1,880	2.9%	9,224	14.5%		

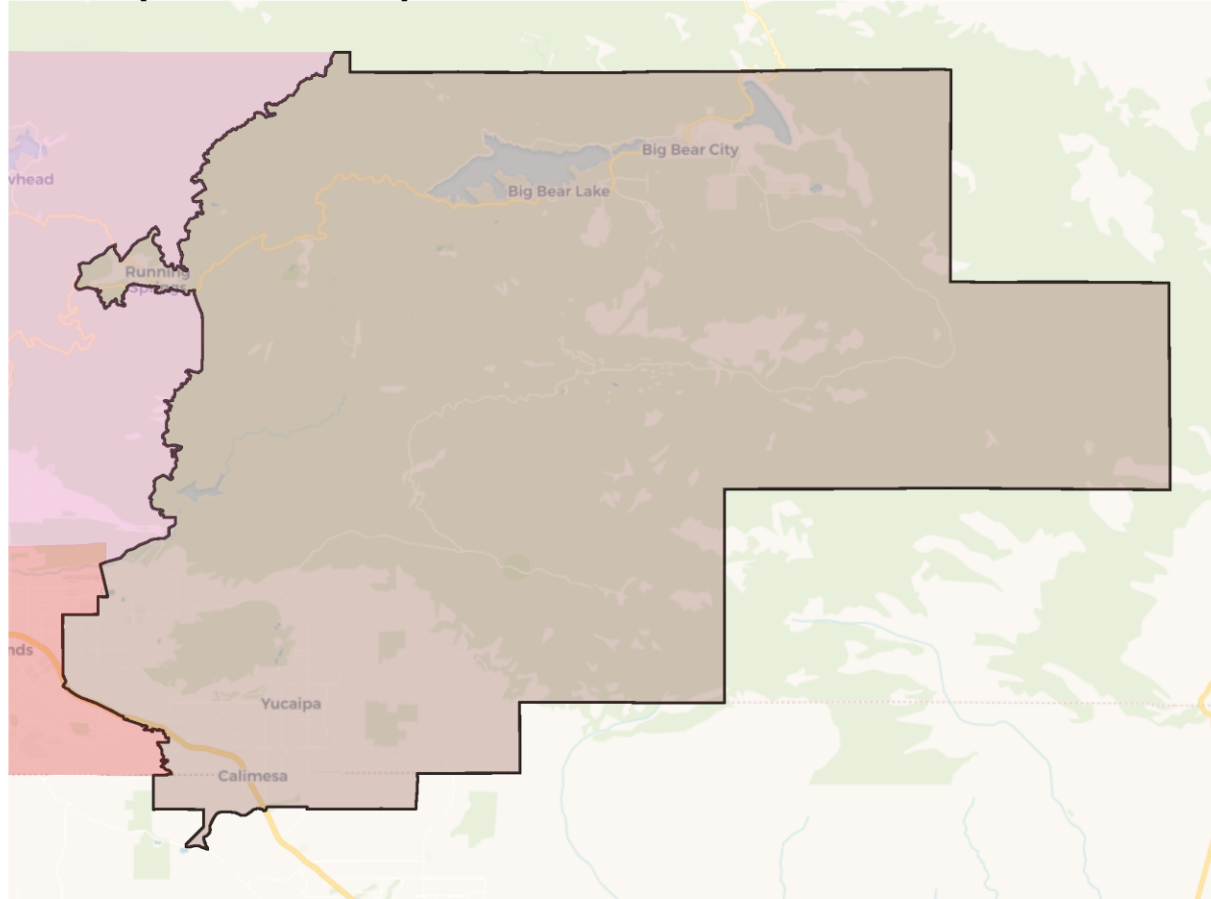
## 2020 Census



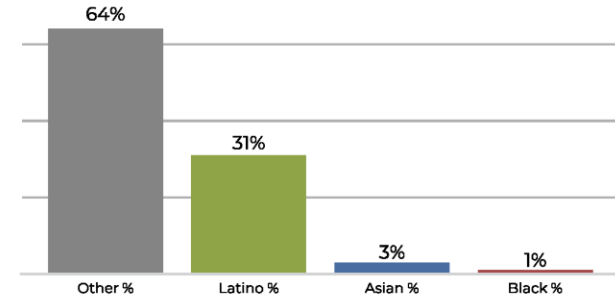
## Citizen Voting Age Population



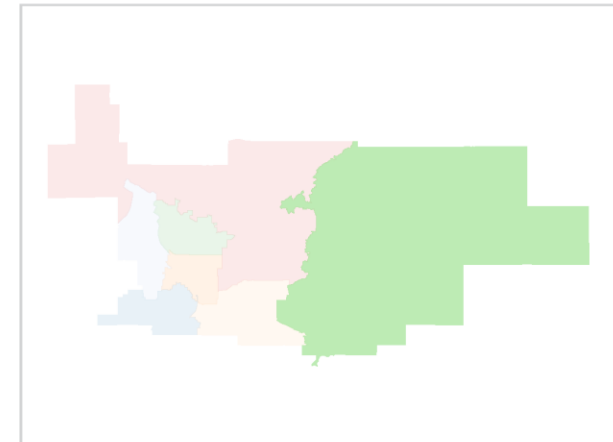
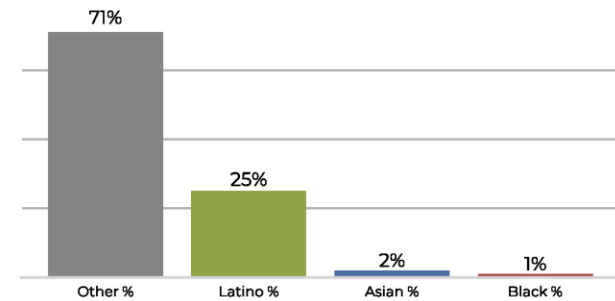
## Area 6 (Houston 2022)



## 2020 Census

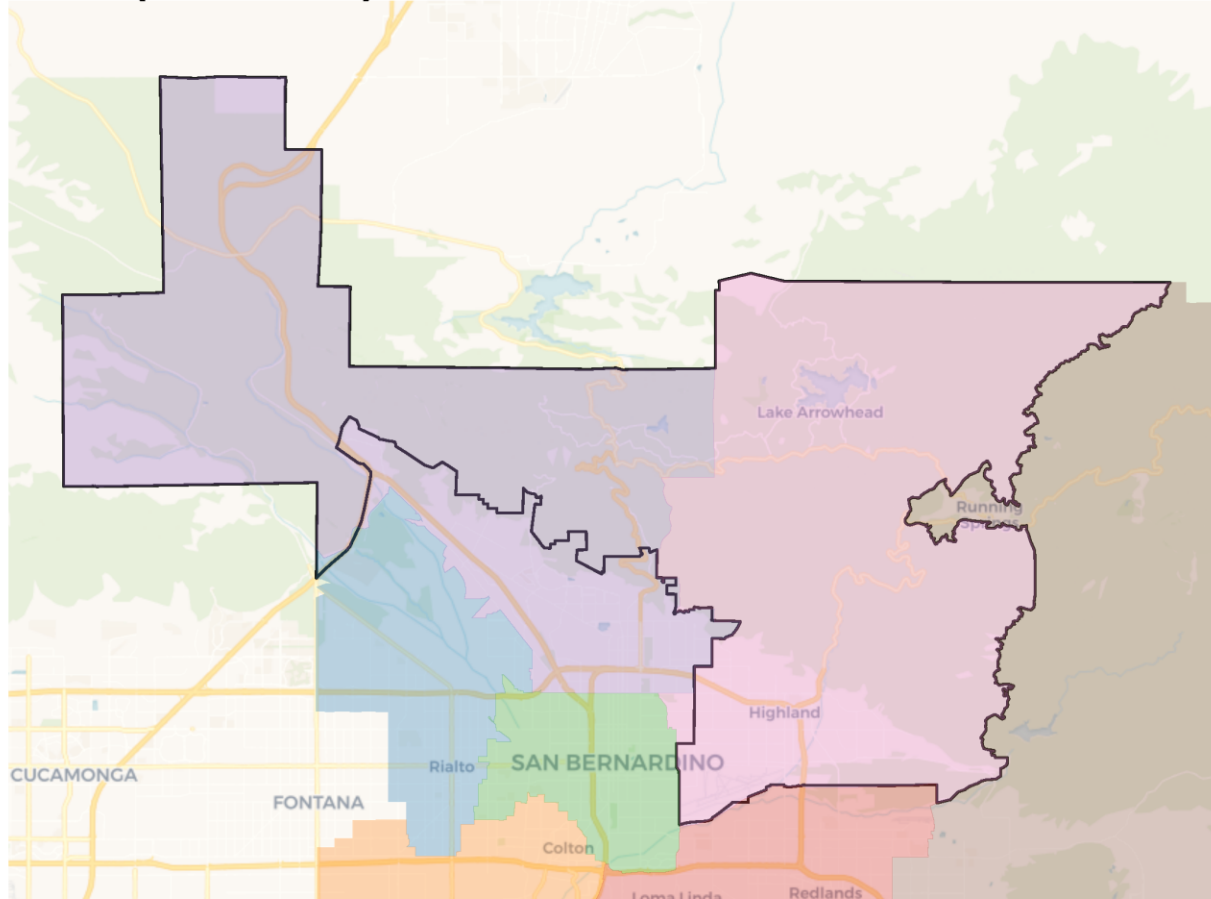


## Citizen Voting Age Population

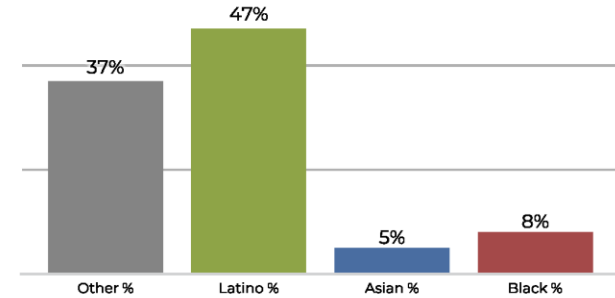


Population	Deviation	Deviation %	Other	Other %	Latino	Latino %	Asian	Asian %	Black	Black %
108,402	-962	-0.9%	69,511	64.1%	33,718	31.1%	3,328	3.1%	1,845	1.7%
Total CVAP	Other CVAP	Other CVAP %	Latino CVAP	Latino CVAP %	Asian CVAP	Asian CVAP %	Black CVAP	Black CVAP %		
77,450	54,958	71.0%	19,337	25.0%	2,115	2.7%	1,040	1.3%		

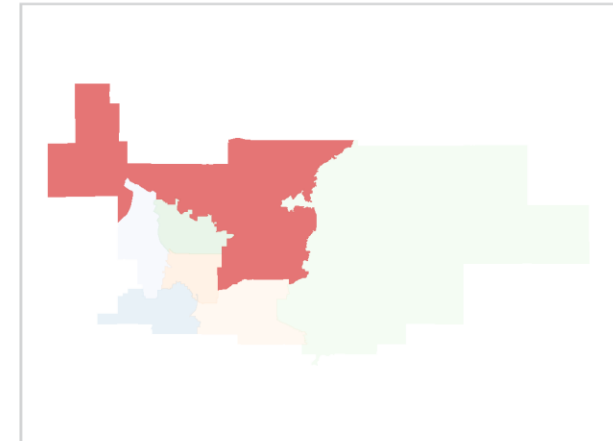
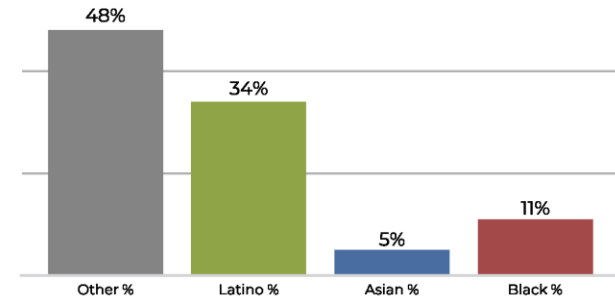
## Area 7 (Viricel 2024)



## 2020 Census



## Citizen Voting Age Population



Population	Deviation	Deviation %	Other	Other %	Latino	Latino %	Asian	Asian %	Black	Black %
111,497	2,133	2.0%	42,017	37.7%	53,246	47.8%	6,292	5.6%	9,942	8.9%
Total CVAP	Other CVAP	Other CVAP %	Latino CVAP	Latino CVAP %	Asian CVAP	Asian CVAP %	Black CVAP	Black CVAP %		
68,926	33,461	48.5%	23,720	34.4%	3,639	5.3%	8,105	11.8%		