

SAN BERNARDINO  COMMUNITY COLLEGE DISTRICT

Dual Enrollment Update

Board Retreat- June 24, 2025



SBCCD'S Dual Enrollment Efforts

Goal 1: Eliminate barriers to student access and success.

DSO

1.1: Support the colleges in creating efficient processes and accessible, user-friendly customer services.

CHC

1.1: Increase student enrollment.

SBVC

1.1: Create a college-going culture through intentional community outreach and clear communications of pathways.

1.2: Innovate curriculum and course offerings to support student equity and completion.

1.3: Expand and align support services and resources in conjunction with student pathways.

Dual Enrollment Definitions

Dual Enrollment:

Opportunities for high school, adult school students, or other eligible students to enroll in community college courses as a special admit student and receive college credit.

College and Career Access Pathways (CCAP) Dual Enrollment (AB 288):

Opportunities that promote pathways from high school to community college for career technical education or preparation for transfer, improving high school graduation rates or helping high school students achieve college and career readiness.



SAN BERNARDINO
COMMUNITY COLLEGE
DISTRICT

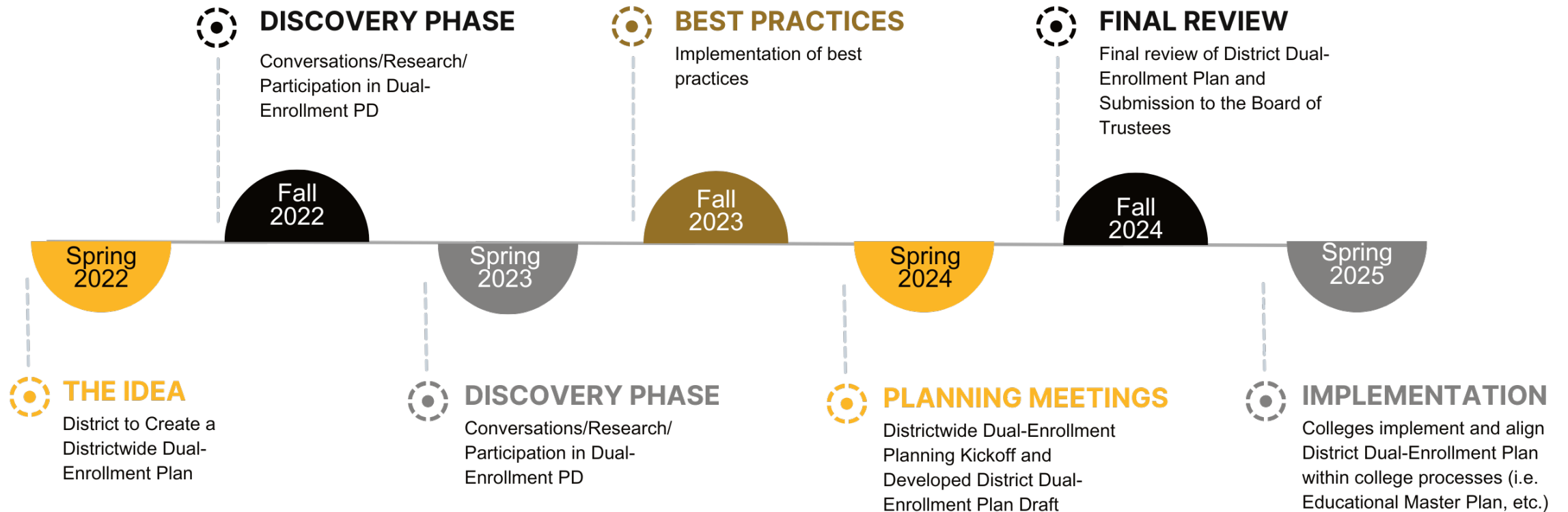
DUAL ENROLLMENT PLAN



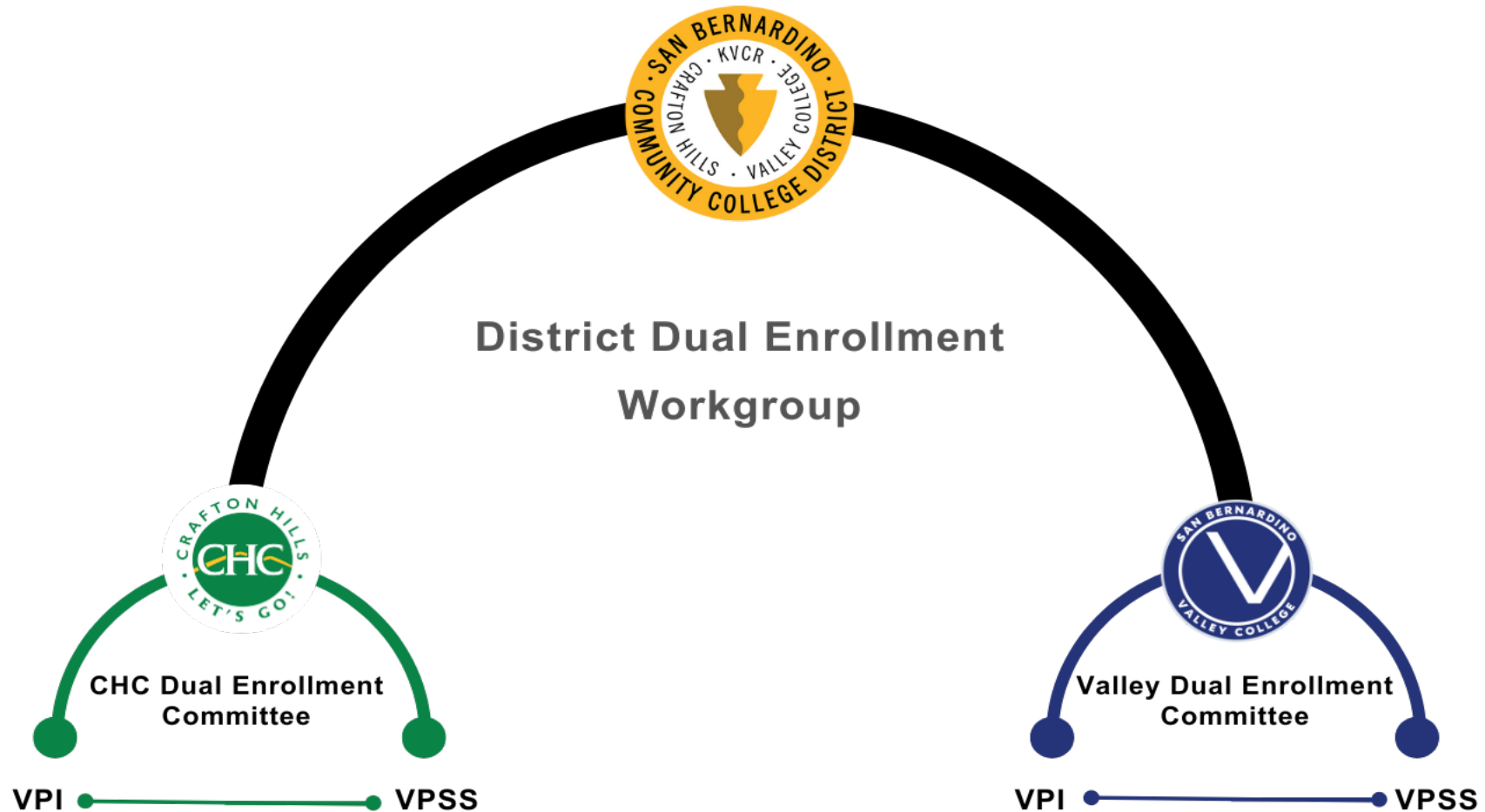
San Bernardino
Valley College

2024 - 2025

Implementation Timeline



Workgroup Structure



Workgroup Focus Groups



Policy



MOUs



Enrollment/
Outcomes Data



Student
Services

Dual Enrollment Data

The following shows historical enrollment data for the three-year period 2022-2025, with demographic data, and top courses and success data for the three years.

	2022-2023	2023-2024	2024-2025
SBCCD*	1,926	3,104	4,070
San Bernardino Valley College	1,158	2,011	2,671
Crafton Hills College	775	1,115	1,429

*Note: Unduplicated count at the district level.

Dual Enrollment By Race/Ethnicity

	2022-2023		2023-2024		2024-2025	
Dual Enrolled Count	1,926		3,104		4,070	
African American	138	7.2%	188	6.1%	235	5.8%
American Indian or Alaskan Native	4	0.2%	4	0.1%	6	0.1%
Asian (incl. Filipino)	173	9.0%	182	5.9%	254	6.2%
Hispanic	1,231	63.9%	2,118	68.2%	2,731	67.1%
Multiracial	85	4.4%	119	3.8%	167	4.1%
Pacific Islander or Hawaiian Native	7	0.4%	13	0.4%	7	0.2%
White	279	14.5%	462	14.9%	614	15.1%
Unreported	9	0.5%	18	0.6%	56	1.4%

Dual Enrollment By Gender

	2022-2023		2023-2024		2024-2025	
Dual Enrolled Count	1,926		3,104		4,070	
Females	1,257	65.3%	1,981	63.8%	2,487	61.1%
Males	632	32.8%	1,065	34.3%	1,507	37%
Unreported	37	1.9%	58	1.9%	76	1.9%

Dual Enrollment By Age

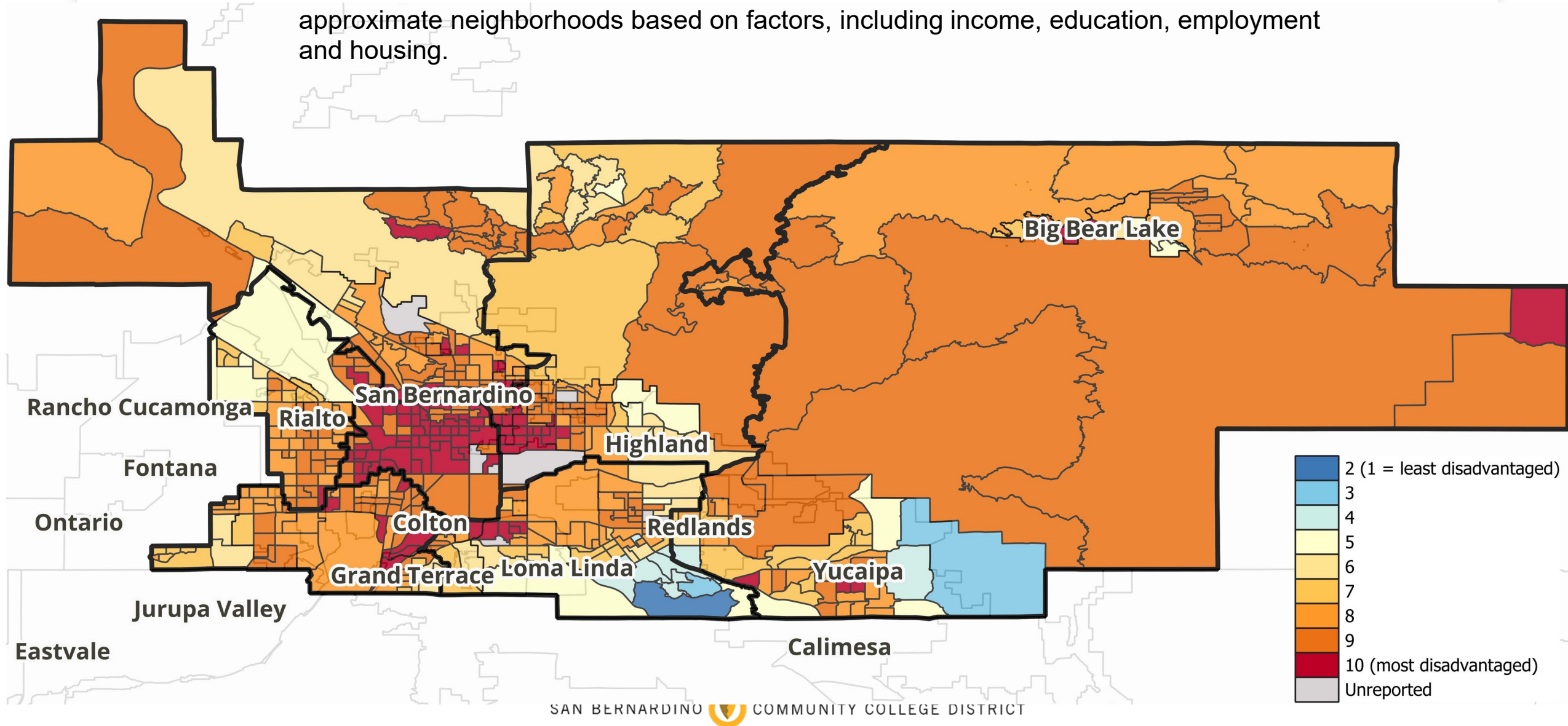
	2022-2023		2023-2024		2024-2025	
Dual Enrolled Count	1,926		3,104		4,070	
18	149	7.7%	200	6.4%	273	6.7%
17	759	39.4%	1,111	35.8%	1,439	35.4%
16	560	29.1%	953	30.7%	1,165	28.6%
15	323	16.8%	532	17.1%	763	18.7%
14	91	4.7%	242	7.8%	345	8.5%
13	6	0.3%	8	0.3%	7	0.2%

Dual Enrollment By Generation

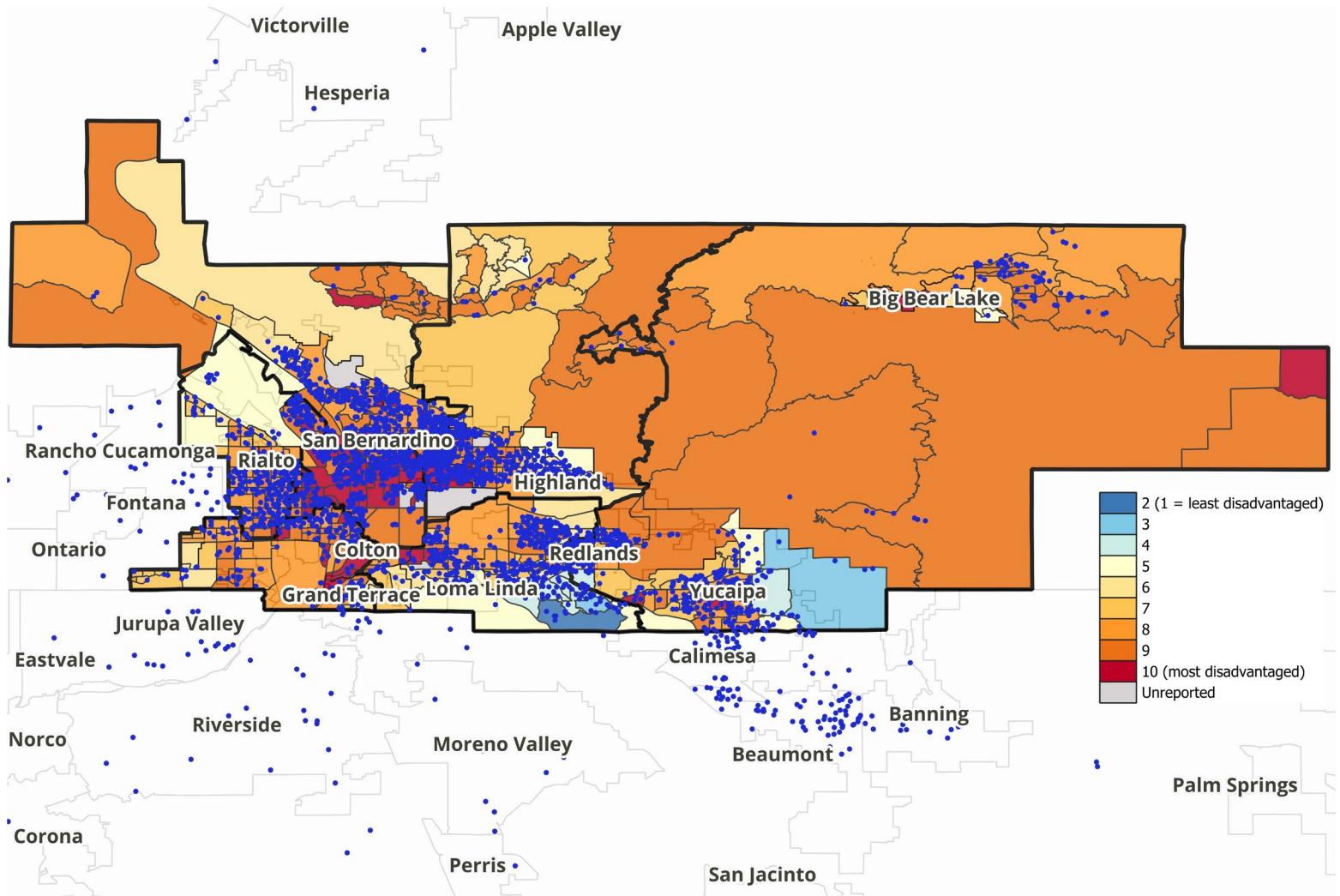
	2022-2023		2023-2024		2024-2025	
Dual Enrolled Count	1,926		3,104		4,070	
First Generation Students	661	34.3%	1,092	35.2%	1,346	33.1%

Area Deprivation Index (ADI) within SBCCD boundaries

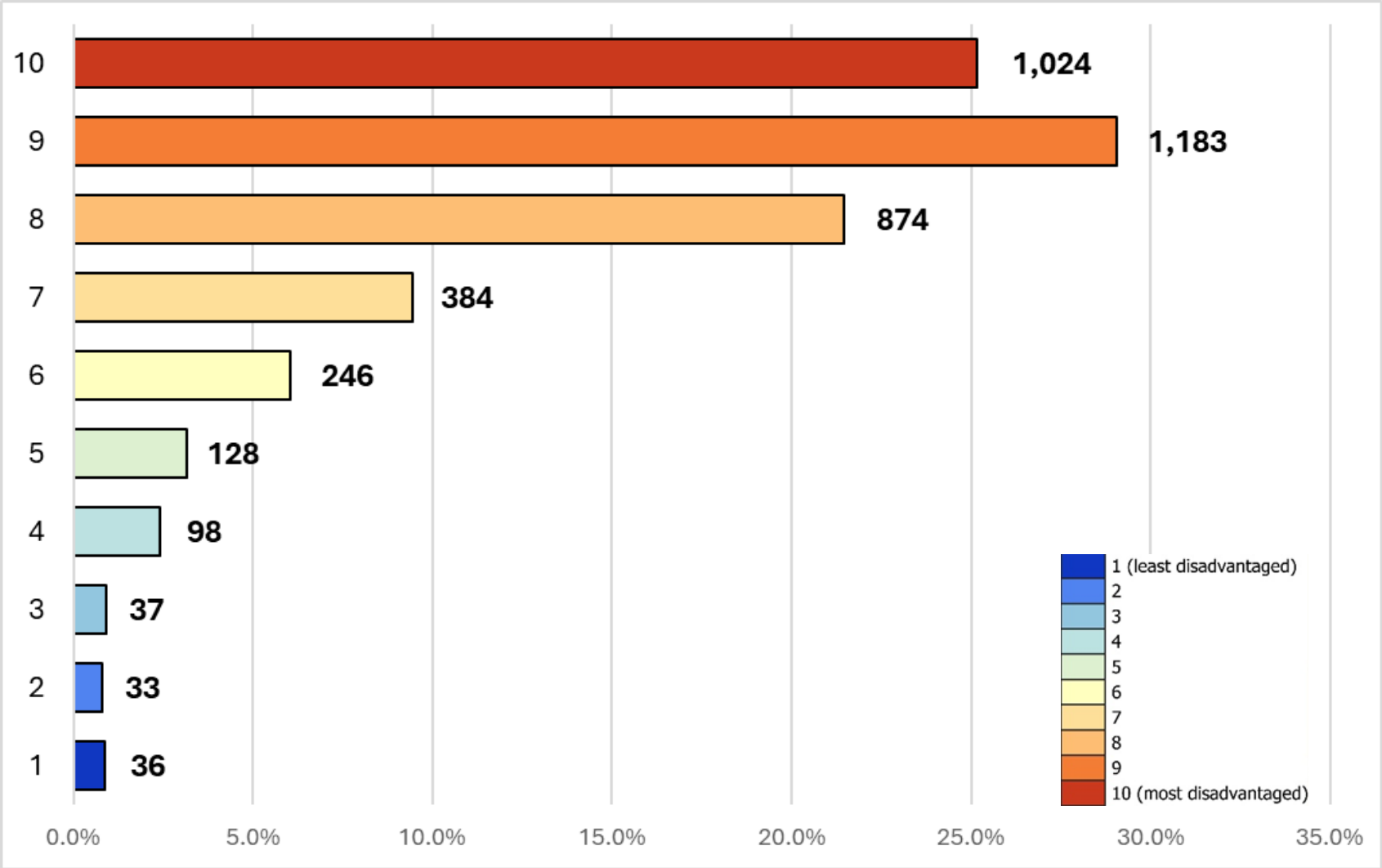
The index shows socioeconomic conditions within District boundaries. The ADI is used to approximate neighborhoods based on factors, including income, education, employment and housing.



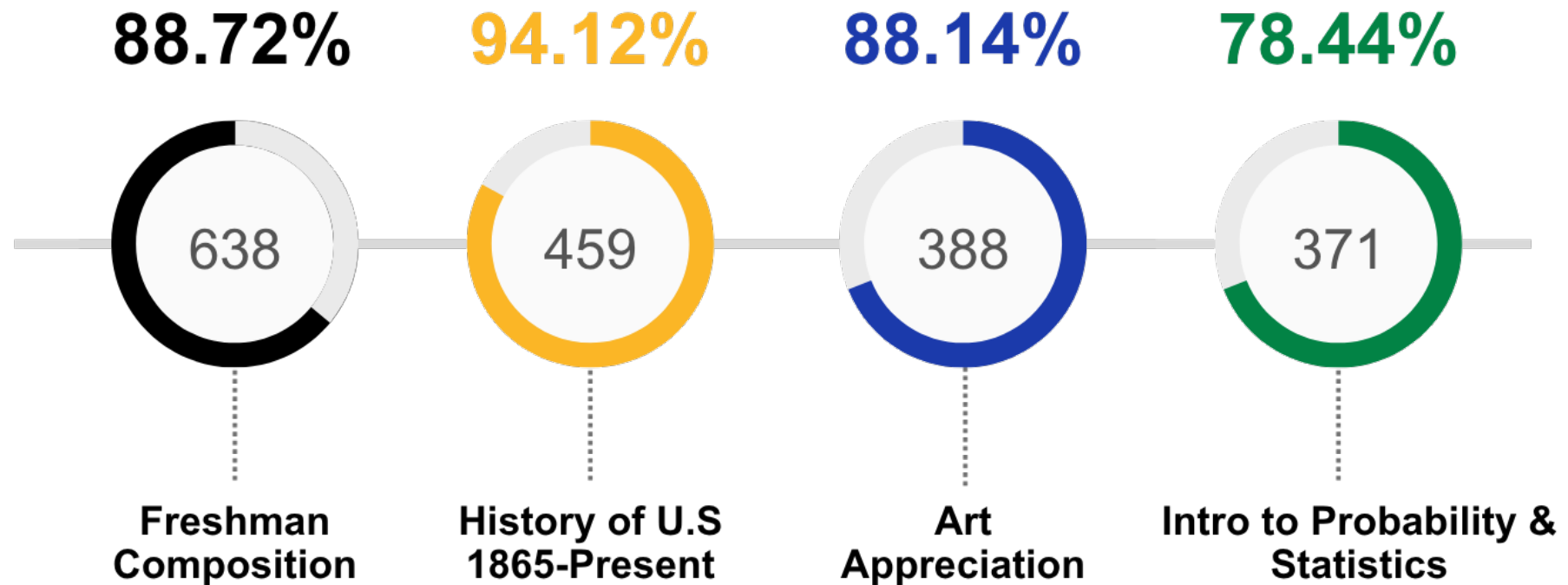
SBCCCD Dual Enrollment Students within the Area Deprivation Index



SBCCCD Dual Enrolled Students by Area Deprivation Index



Top Dual Enrollment Course and Success Rate



Thank you

