



MEASURE CC

BUILDING NEW OPPORTUNITIES FOR
OUR STUDENTS & OUR COMMUNITY

PROJECT TIMELINE

September—December 2020

- ✓ CHC Gym Demolition Underway
- ✓ CHC Exterior Lighting Upgrade Construction Underway
- ✓ Award Civil Survey & Geotechnical for CHC East Valley Public Safety Training Center
- ✓ Award Architecture & Engineering CHC Central Complex 2 Renovation Criteria Docs
- ✓ Award Architecture & Engineering CHC New PAC
- ✓ Award Landscape (Arborist) CHC Multiple Sites
- ✓ Award Landscape (Arborist) SBVC Multiple Sites
- ✓ Award Mechanical, Electrical, Plumbing for Planetarium HVAC Replacement
- ✓ Award Commissioning CHC Central Plant Upgrades
- ✓ Issue RFQP for Construction Management Services
- ✓ Award Commissioning for CHC PAC
- ✓ Award SBVC Fume Hood Survey Infrastructure Project
- ✓ Award DSA IOR—MSA Pool
- ✓ Award A&E Criteria Docs for SBVC ISSB
- ✓ Award Geotechnical, Civil Survey for Career Pathways 2
- ✓ Award Cost Estimating Services Pool

January—March 2021

- ✓ Award CHC Campus Cost Estimating Services
- ✓ Award SBVC Campus Cost Estimating Services
- ✓ Award Progressive Design-Build Consultant
- ✓ Award CHC Student Support Building Hazmat
- ✓ Award CHC Child Development Center Hazmat
- ✓ Award CHC Central Complex 2 Hazmat
- ✓ Award CHC Child Development Center A&E
- ✓ Award CHC Student Support Building A&E
- ✓ Award SBVC ISSB Geotech
- ✓ Award CHC Gym Demo Special Inspections
- ✓ Substantial Completion PMO Office TI Buildout

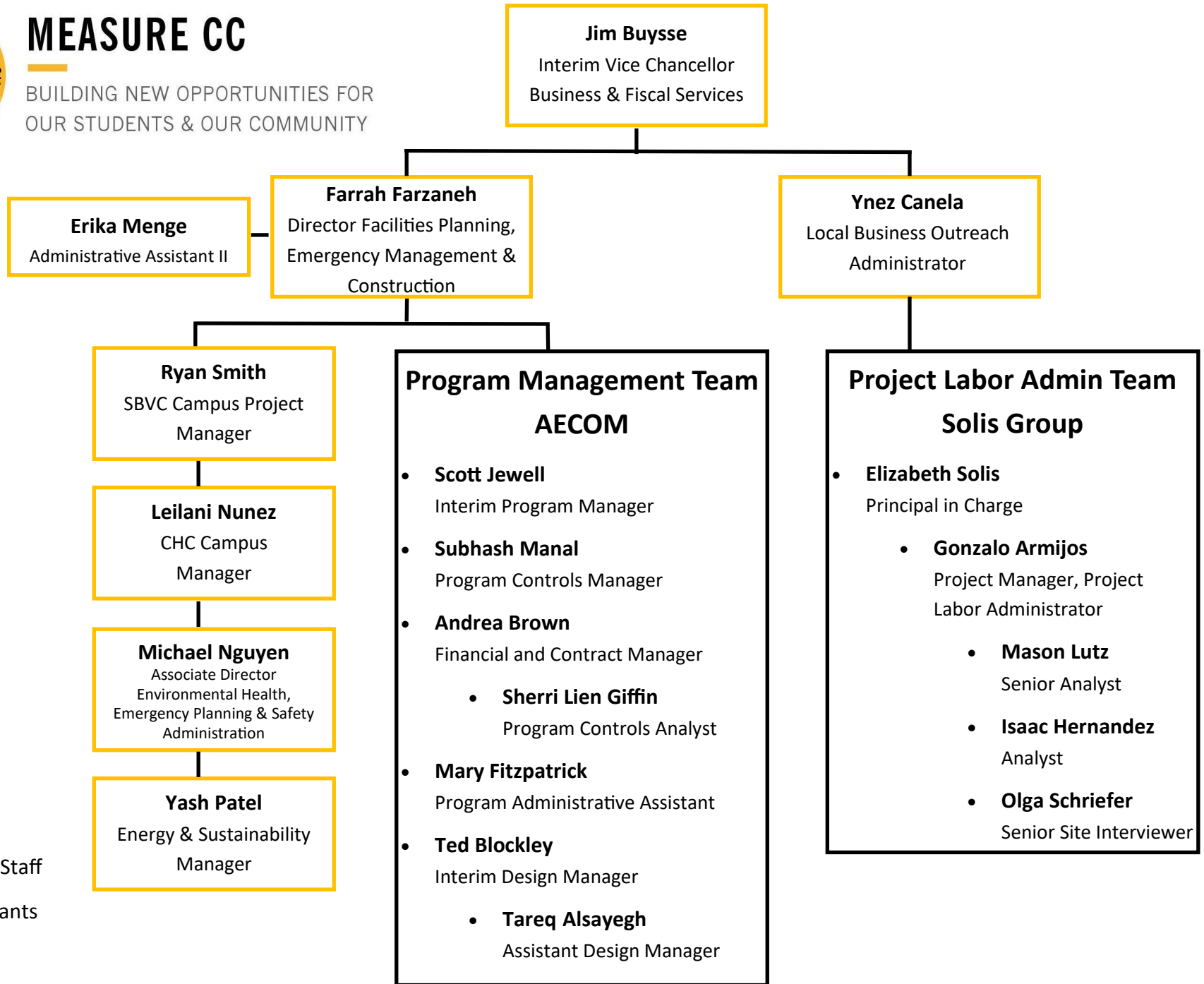
April –June 2021

- Award Environmental Monitoring and CEQA MSA Pool
- Begin Programming SBVC East Wing Renovation Project
- Award CM Services
- Award CHC Campus Accessibility and Site Improvements
- Award Commissioning SBVC Planetarium HVAC Replacement
- Award SBVC Fume Hoods Commissioning
- Award SBVC Fume Hoods A&E
- Award SBVC Campus wide Utility Upgrades MEP
- Release RFQP for D/B Entity for CHC Central Complex 1 Renovation
- Release RFQP for D/B Entity for SBVC Career Pathways 2
- Complete SBVC ISSB Design Criteria



MEASURE CC

BUILDING NEW OPPORTUNITIES FOR
OUR STUDENTS & OUR COMMUNITY



— District Staff
— Consultants

For questions or information regarding Measure CC please
contact Erika Menge at emenge@sbccd.edu or (909) 388-6910.