

# KVCR

## Five Year Forecast



Inspiring



Assessing



Adjusting

Presented to the Board Finance Committee  
October 13, 2022

# Alignment with SBCCCD Strategic Plan

## GOAL 1 | ELIMINATE BARRIERS TO STUDENT ACCESS AND SUCCESS

1. Continue efforts to increase college-going culture.
2. Investigate and promote the success of our identity-based programs and student support services to gain insight that can be leveraged to enhance current efforts to improve the broader student experience at SBCCCD.
3. Develop a state-of-the-art technology system that delivers a student-centered experience, improves efficiency and effectiveness, and provides analytical strategies and infrastructure that allow SBCCCD to make data-informed decisions.
4. Grow and expand dual/ concurrent enrollment and K-12 articulations.
5. Implement a Board- approved KVCR plan.

## GOAL 2 | BE A DIVERSE, EQUITABLE, INCLUSIVE, AND ANTI-RACIST INSTITUTION

1. Implement the four pillars of guided pathways.
2. Increase access and sense of belonging districtwide and foster a culture of inclusion that is supported by targeted professional development and sustained DEIA initiatives.
3. Leverage partnerships with community-based organizations to expand SBCCCD's sphere of influence and include constituent voices in decision making.

## GOAL 3 | BE A LEADER AND PARTNER IN ADDRESSING REGIONAL ISSUES

1. Develop a Strategic Plan that will signal to all constituents that SBCCCD has a comprehensive vision that positively impacts our region and effectively employs strategies that will enable our students to develop the knowledge, confidence, and ability to succeed.
2. Institutionalize our commitment to investing in cultivating leadership skills within our District as a vehicle for expanding SBCCCD's ability to influence economic and educational initiatives around the region, state, and country.
3. Grow our reputation as a leading higher education institution by enhancing and cultivating community partnerships with K-12 partners, businesses, and community organizations.

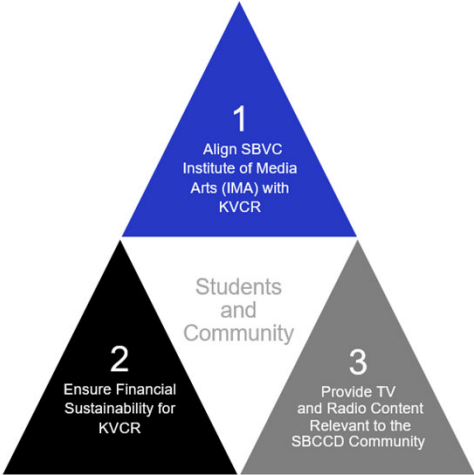
## GOAL 4 | ENSURE FISCAL ACCOUNTABILITY/SUSTAINABILITY

1. Expand grants, unrestricted revenues, partnerships with regional employers, and philanthropic culture.
2. Continue to advocate for local state and federal funding to support SBCCCD's mission.
3. Enhance innovation in our investments, space utilization, and growth to (1) remain at the vanguard of facilities development; (2) improve our ability to respond to variations in capital and operational budgets and; (3) set aside funds for deferred maintenance.
4. Leverage resources to decrease student cost of attaining a high-quality education.

# Alignment with SBCCCD Strategic Plan

**GOAL 1 | ELIMINATE BARRIERS TO STUDENT ACCESS AND SUCCESS**

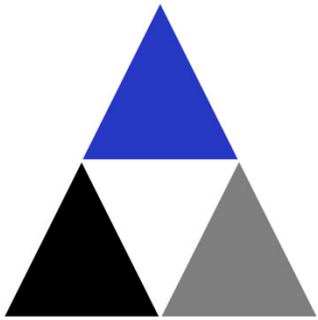
5. Implement a Board- approved KVCR plan.



**GOAL 2 | BE A DIVERSE, EQUITABLE, INCLUSIVE, AND ANTI-RACIST INSTITUTION**

**GOAL 3 | BE A LEADER AND PARTNER IN ADDRESSING REGIONAL ISSUES**

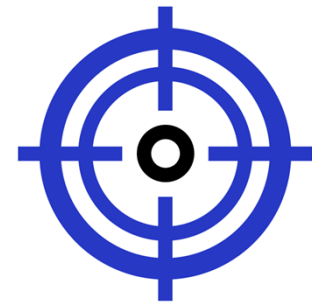
**GOAL 4 | ENSURE FISCAL ACCOUNTABILITY/SUSTAINABILITY**



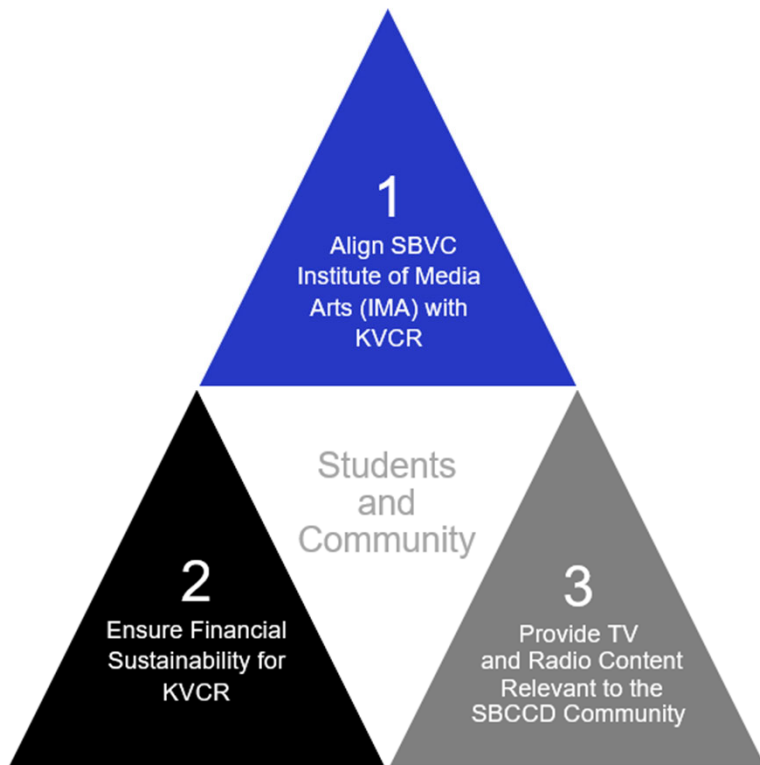
Inspiring



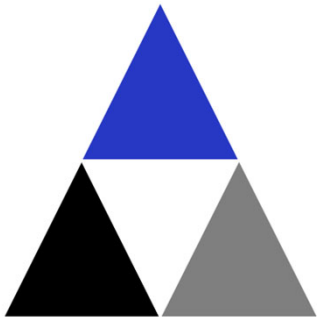
Assessing



Adjusting



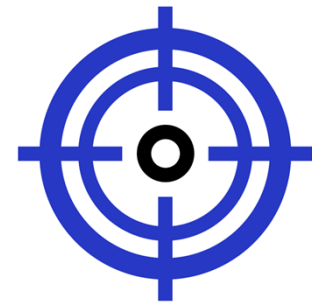
The **KVCR** | *Inspiring Possibilities* plan is a collaboration of management, faculty and station staff. It contains analysis of where the station is now and offers possibilities for the future that align KVCR with SBCCD's Mission and puts students and the community at the center of operations.



Inspiring



Assessing



Adjusting



# KVCR Five-Year Forecast

	DESCRIPTION	Unaudited FY 2022	FY 2023	FY 2024	FY 2025	FY 2026	FY 2027
<b>Revenues:</b>							
1	Corporation for Public Broadcasting Grant	617,227	621,160	625,000	709,040	709,040	720,000
2	Other Grants	955,957	335,000	350,000	515,000	540,000	565,000
3	Pledges (net of expenses)	1,417,697	801,976	1,020,000	1,090,000	1,195,000	1,215,000
4	Underwriting	408,196	540,000	625,000	690,000	791,250	850,000
5	Contributions, Gifts	3,392	37,833	605,000	305,000	35,000	45,000
5a	FY21-22 State Grant #1 Annual Contributions	-	1,209,226	955,000	1,078,872	580,000	-
5b	FY22-23 Federal Grant Annual Contributions	-	500,000	500,000	-	-	-
5c	FY22-23 State Grant #2 Annual Contributions	-	-	-	600,000	1,125,000	1,750,000
6	Rentals and Leases	586,020	550,000	560,000	570,000	570,000	570,000
7	Other Local Revenues	62,621	820,157	910,207	275,250	329,750	361,500
8	Earnings on \$21M Endowment from PARS	1,050,000	1,050,000	1,050,000	1,050,000	1,050,000	1,050,000
9	Tribal Sponsorships	-	40,000	50,000	160,000	175,000	180,000
10	<b>Total Revenues</b>	<b>5,101,110</b>	<b>6,505,352</b>	<b>7,250,207</b>	<b>7,043,162</b>	<b>7,100,040</b>	<b>7,306,500</b>
<b>Expenditures:</b>							
11	Classified Salaries	1,519,839	1,958,377	2,739,340	2,806,557	2,907,733	2,982,145
12	Benefits	660,845	795,452	1,208,548	1,488,471	1,524,844	1,551,595
13	Supplies & Materials	12,513	41,350	44,550	19,450	18,200	18,450
14	Other Expenses & Services	2,531,159	2,839,073	3,086,021	2,653,814	2,639,414	2,686,264
15	Capital Outlay	3,075	7,450	6,661	3,450	3,450	3,450
16	<b>Total Expenditures</b>	<b>4,727,431</b>	<b>5,641,703</b>	<b>7,085,120</b>	<b>6,971,742</b>	<b>7,093,641</b>	<b>7,241,904</b>
17	Net Increase (Decrease) in Fund Balance	373,680	863,649	165,087	71,420	6,399	64,596
18	Estimated Beginning Fund Balance July 1	(1,155,930)	(782,250)	81,399	246,486	317,906	324,305
19	Estimated Ending Fund Balance June 30	(782,250)	81,399	246,486	317,906	324,305	388,901



# FY 2022-2023 Highlights

DESCRIPTION		FY 2023
<b>Revenues:</b>		
1	Corporation for Public Broadcasting Grant	621,160
2	Other Grants	335,000
3	Pledges (net of expenses)	801,976
4	Underwriting	540,000
5	Contributions, Gifts	37,833
5a	FY21-22 State Grant #1 Annual Contributions	1,209,226
5b	FY22-23 Federal Grant Annual Contributions	500,000
5c	FY22-23 State Grant #2 Annual Contributions	-
6	Rentals and Leases	550,000
7	Other Local Revenues	820,157
8	Earnings on \$21M Endowment from PARS	1,050,000
9	Tribal Sponsorships	40,000
10	<b>Total Revenues</b>	<b>6,505,352</b>
<b>Expenditures:</b>		
11	Classified Salaries	1,958,377
12	Benefits	795,452
13	Supplies & Materials	41,350
14	Other Expenses & Services	2,839,073
15	Capital Outlay	7,450
16	<b>Total Expenditures</b>	<b>5,641,703</b>
17	Net Increase (Decrease) in Fund Balance	863,649
18	Estimated Beginning Fund Balance July 1	(782,250)
19	Estimated Ending Fund Balance June 30	81,399

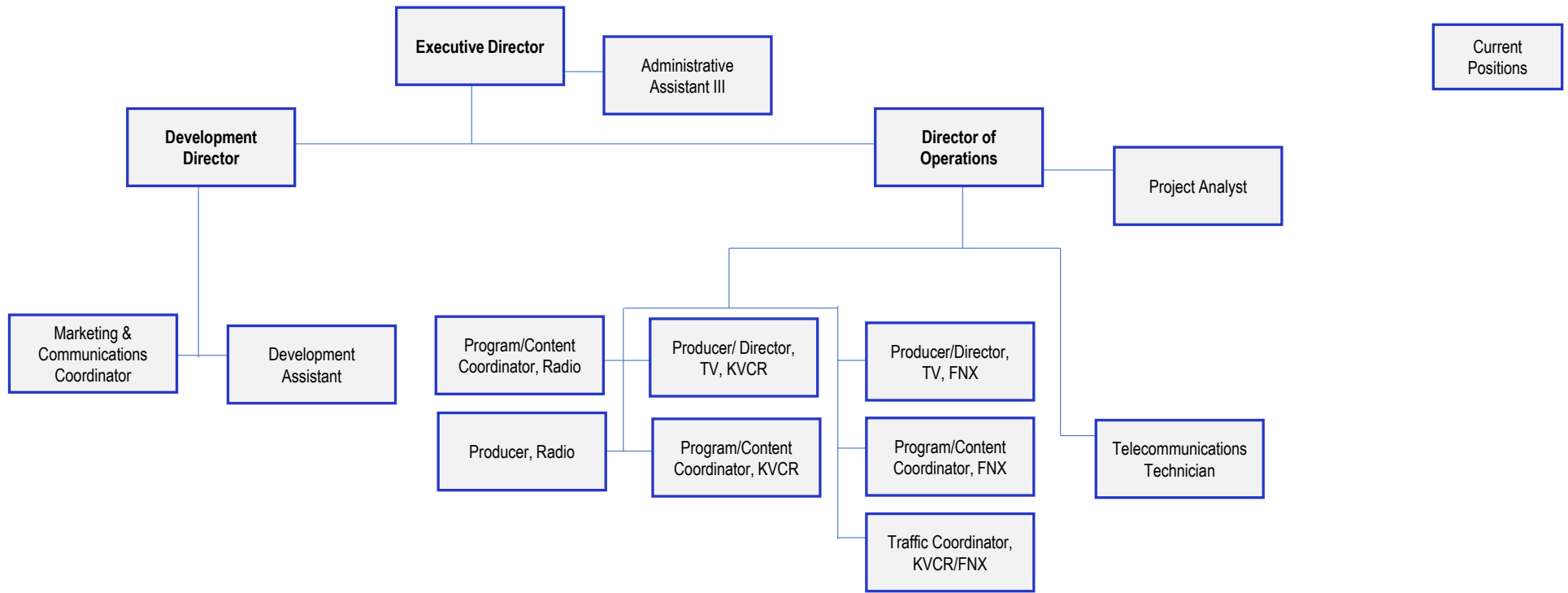
## INCREASED REVENUES

- Local Revenues:
  - SBCSS Partnership - \$663,007
- State Grant:
  - PBS, NPR, and Content - \$1.2 Million
- Federal Grant:
  - Department of Education - \$500,000
- Fundraising Efforts:
  - Increase in grants, pledges, and contributions





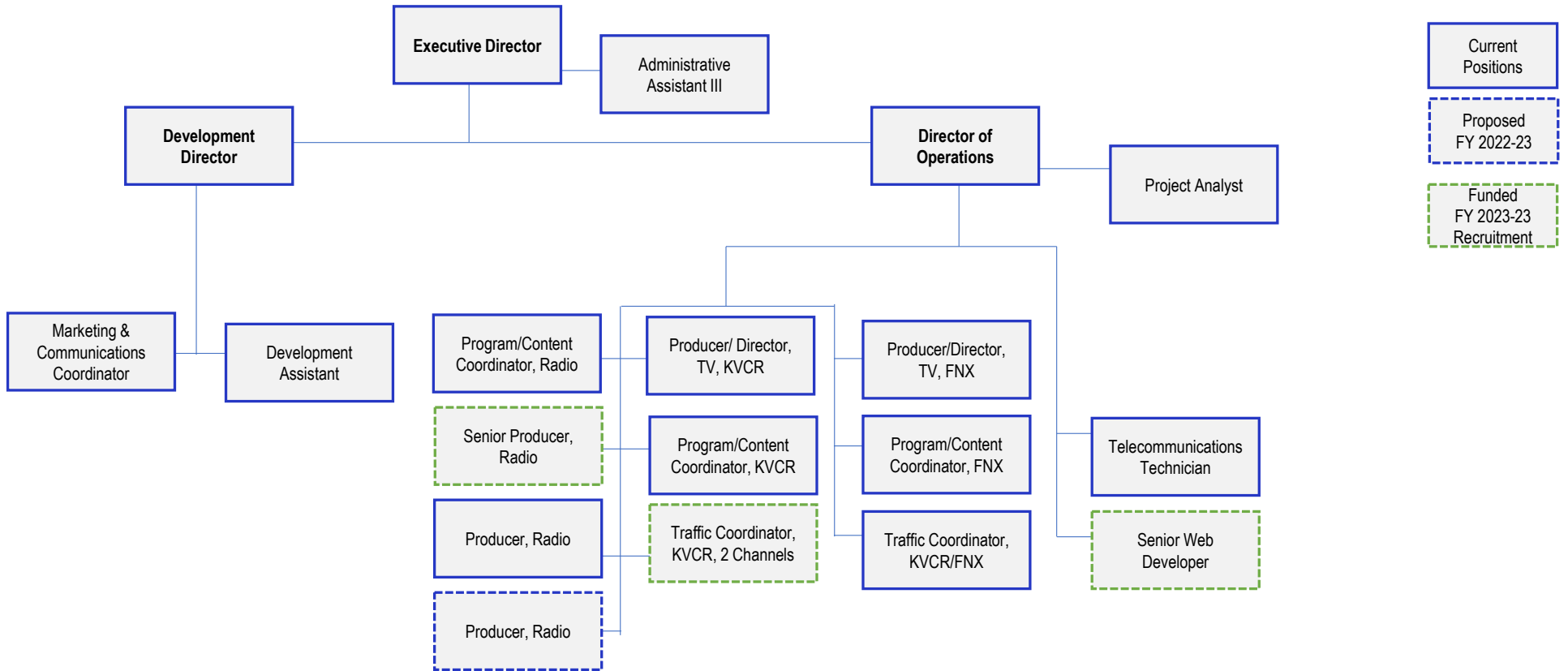
# FY 2022-2023 Personnel



Current Positions



# FY 2022-2023 Personnel





# FY 2022-2023 Outcomes

- 1) **Align KVCR with the Media Academies**
  - Student Involvement with implementation of Strategic Direction #3
  - Media Academies Integration
  
- 2) **Ensure Financial Stability for KVCR**
  - PBS, NPR, and Content Grant
  - Federal Grant
  - SBCSS Partnership
  - Increase Fundraising Efforts
  - Increased Efficiencies
  
- 3) **Provide TV & Radio Content Relevant to the SBCCD Community**
  - Partnership with SBCSS (Learn with Me)
  - Continue providing PBS and NPR to the SBCCD Community
  - KVCR enters the digital world
  - FNX receives additional support by aligning it with KVCR



# FY 2023-2024 Highlights

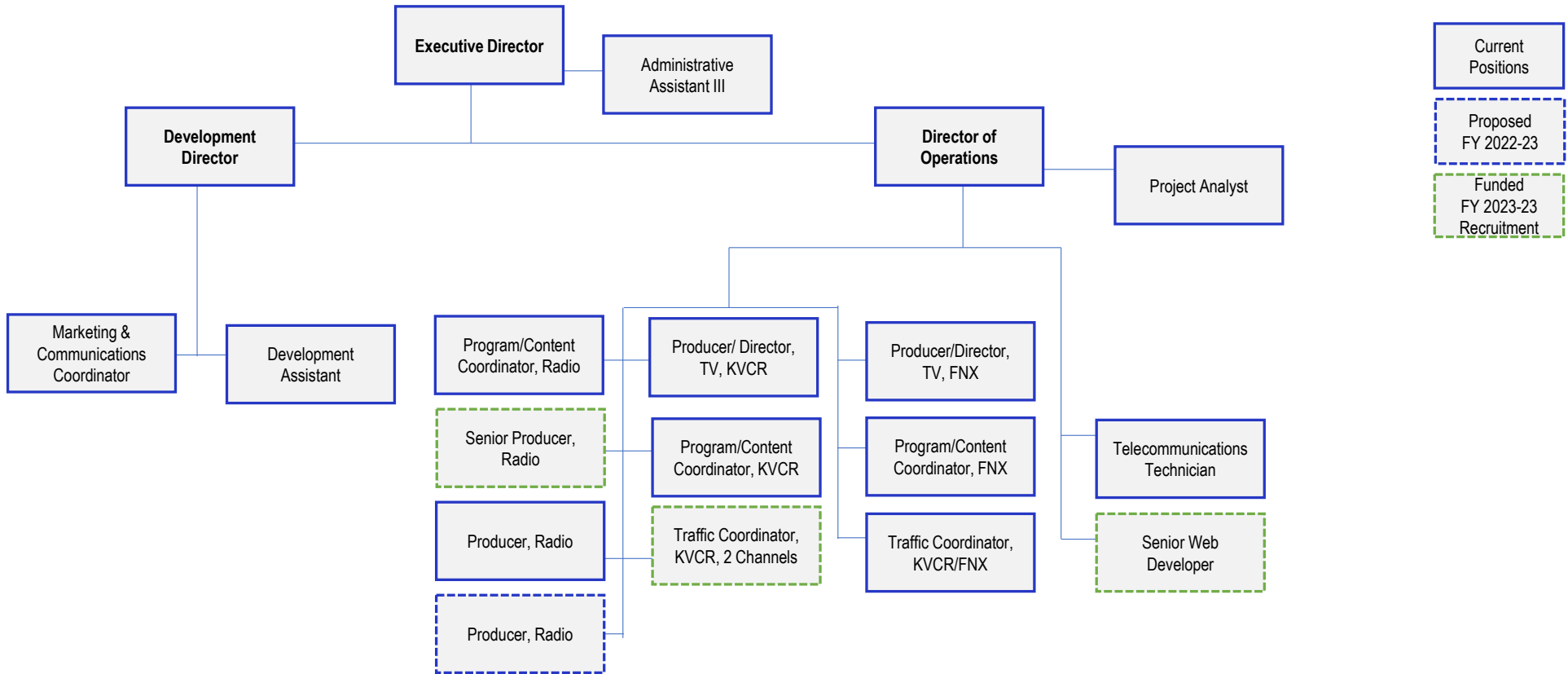
	DESCRIPTION	FY 2024
<b>Revenues:</b>		
1	Corporation for Public Broadcasting Grant	625,000
2	Other Grants	350,000
3	Pledges (net of expenses)	1,020,000
4	Underwriting	625,000
5	Contributions, Gifts	605,000
5a	FY21-22 State Grant #1 Annual Contributions	955,000
5b	FY22-23 Federal Grant Annual Contributions	500,000
5c	FY22-23 State Grant #2 Annual Contributions	-
6	Rentals and Leases	560,000
7	Other Local Revenues	910,207
8	Earnings on \$21M Endowment from PARS	1,050,000
9	Tribal Sponsorships	50,000
10	<b>Total Revenues</b>	<b>7,250,207</b>
<b>Expenditures:</b>		
11	Classified Salaries	2,739,340
12	Benefits	1,208,548
13	Supplies & Materials	44,550
14	Other Expenses & Services	3,086,021
15	Capital Outlay	6,661
16	<b>Total Expenditures</b>	<b>7,085,120</b>
17	Net Increase (Decrease) in Fund Balance	165,087
18	Estimated Beginning Fund Balance July 1	81,399
19	Estimated Ending Fund Balance June 30	246,486

## INCREASED REVENUES

- Local Revenues:
  - SBCSS Partnership - \$663,007
- State Grant:
  - PBS, NPR, and Content - \$1 Million
- Federal Grant:
  - Department of Education - \$500,000
- Fundraising Efforts:
  - Increase in pledges - \$200,000
- Additional Grants:
  - Additional Federal Grants – \$500,000

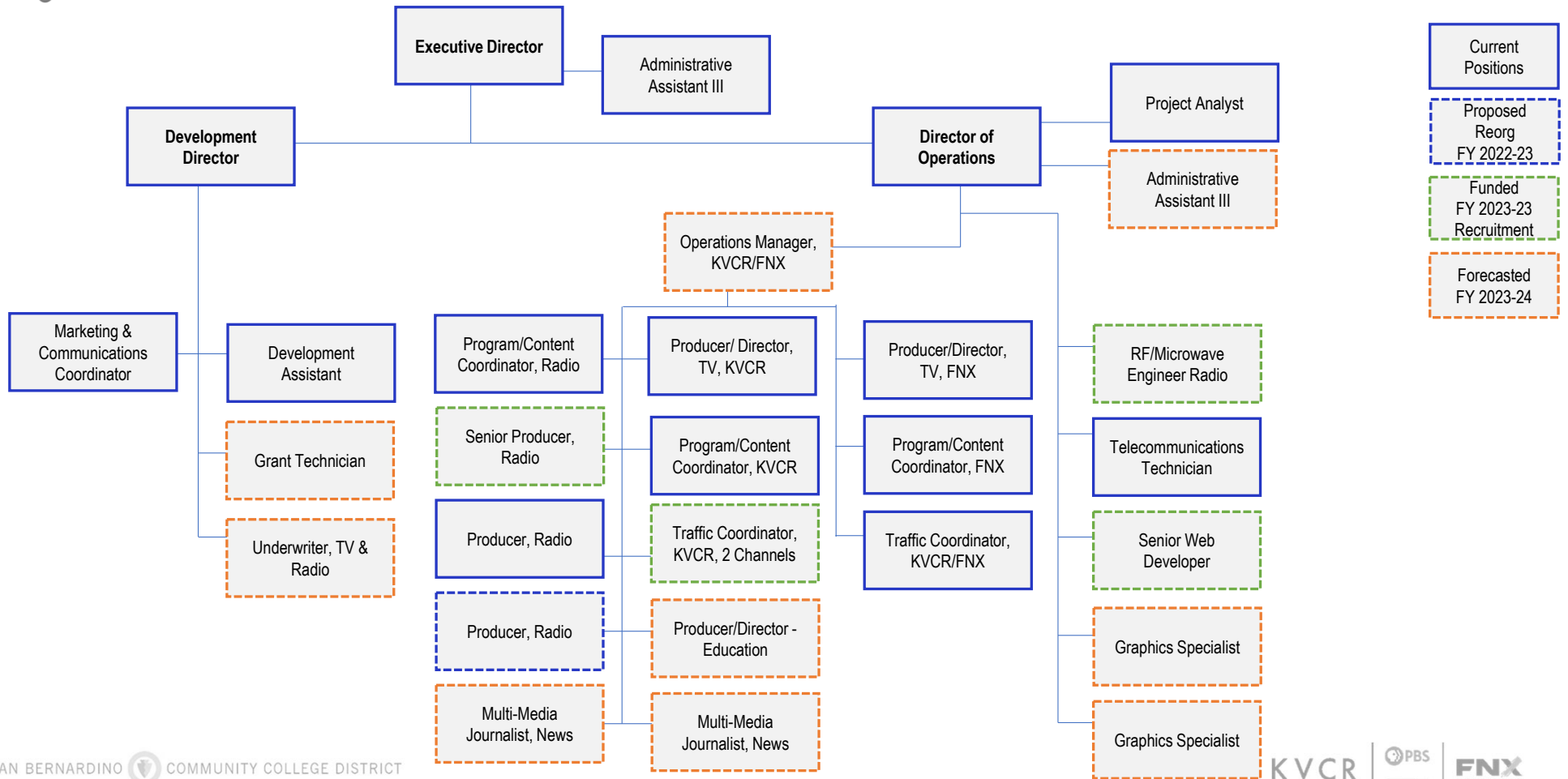


# FY 2023-2024 Personnel





# FY 2023-2024 Personnel





# FY 2023-2024 Outcomes

- 1) **Align KVCR with the Media Academies**
  - Student Involvement with implementation of Strategic Direction #3
  - Media Academies Integration
  
- 2) **Ensure Financial Stability for KVCR**
  - PBS, NPR, and Content Grant
  - Federal Grant
  - SBCSS Partnership
  - Increase Fundraising Efforts
  - Increased Grant Applications Efforts
  
- 3) **Provide TV & Radio Content Relevant to the SBCCD Community**
  - Partnership with SBCSS (Learn with Me)
  - Continue providing PBS and NPR to the SBCCD Community
  - Revamp Community Affairs With Local Programming / News
  - Implement Cloud Based Provider for FNX
  - Evaluate Additional Digital Services



# FY 2024-2025 Highlights

DESCRIPTION		FY 2025
<b>Revenues:</b>		
1	Corporation for Public Broadcasting Grant	709,040
2	Other Grants	515,000
3	Pledges (net of expenses)	1,090,000
4	Underwriting	690,000
5	Contributions, Gifts	305,000
5a	FY21-22 State Grant #1 Annual Contributions	1,078,872
5b	FY22-23 Federal Grant Annual Contributions	-
5c	FY22-23 State Grant #2 Annual Contributions	600,000
6	Rentals and Leases	570,000
7	Other Local Revenues	275,250
8	Earnings on \$21M Endowment from PARS	1,050,000
9	Tribal Sponsorships	160,000
10	<b>Total Revenues</b>	<b>7,043,162</b>
<b>Expenditures:</b>		
11	Classified Salaries	2,806,557
12	Benefits	1,488,471
13	Supplies & Materials	19,450
14	Other Expenses & Services	2,653,814
15	Capital Outlay	3,450
16	<b>Total Expenditures</b>	<b>6,971,742</b>
17	Net Increase (Decrease) in Fund Balance	71,420
18	Estimated Beginning Fund Balance July 1	246,486
19	Estimated Ending Fund Balance June 30	317,906

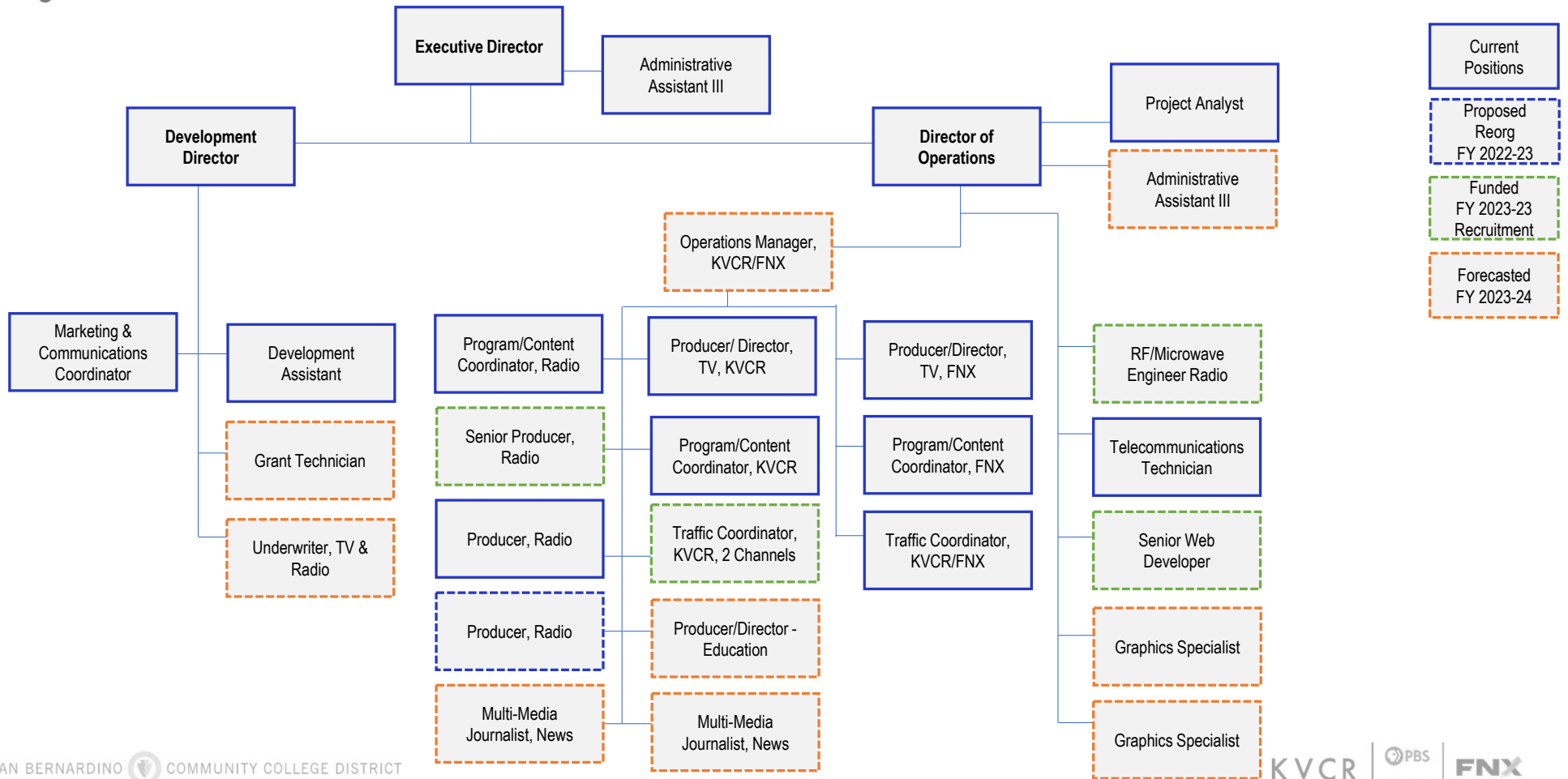
## INCREASED REVENUES

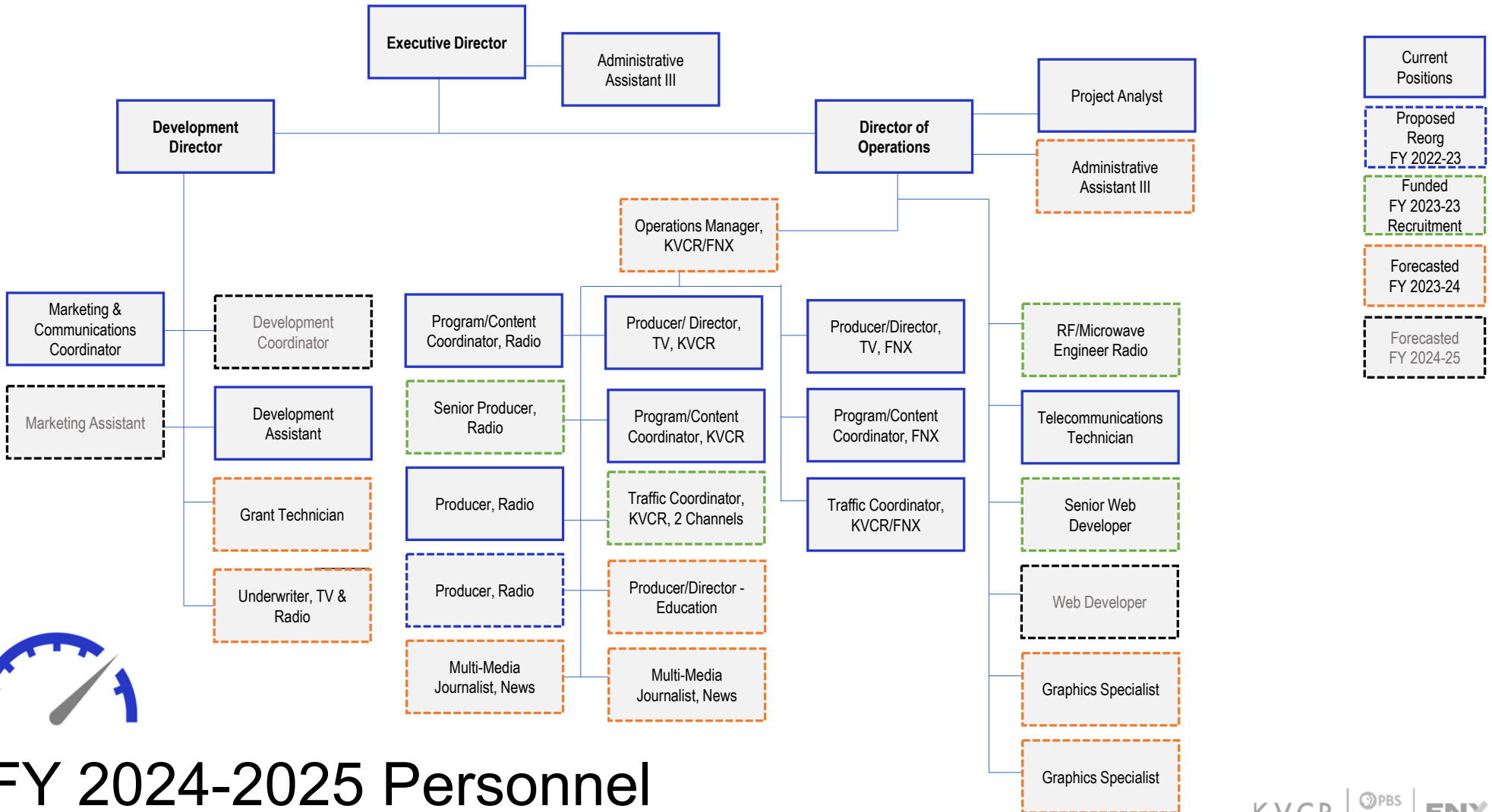
- State Grant:
  - PBS, NPR, and Content - \$1.1 Million
- State Grant:
  - First Annual Contribution - \$600,000
- Fundraising Efforts:
  - Increase in pledges - \$200,000
- Additional Grants:
  - Additional Federal Grants – \$300,000





# FY 2024-2025 Personnel





# FY 2024-2025 Personnel



# FY 2024-2025 Outcomes

- 1) **Align KVCR with the Media Academies**
  - Student Involvement with implementation of Strategic Direction #3
  - Media Academies Integration
  
- 2) **Ensure Financial Stability for KVCR**
  - PBS, NPR, and Content Grant
  - State Grant
  - Increase Fundraising Efforts
  - Increased Grant Applications Efforts
  
- 3) **Provide TV & Radio Content Relevant to the SBCCD Community**
  - Continue providing PBS and NPR to the SBCCD Community
  - Increase Community Affairs With Local Programming / News
  - Implement Additional Digital Services

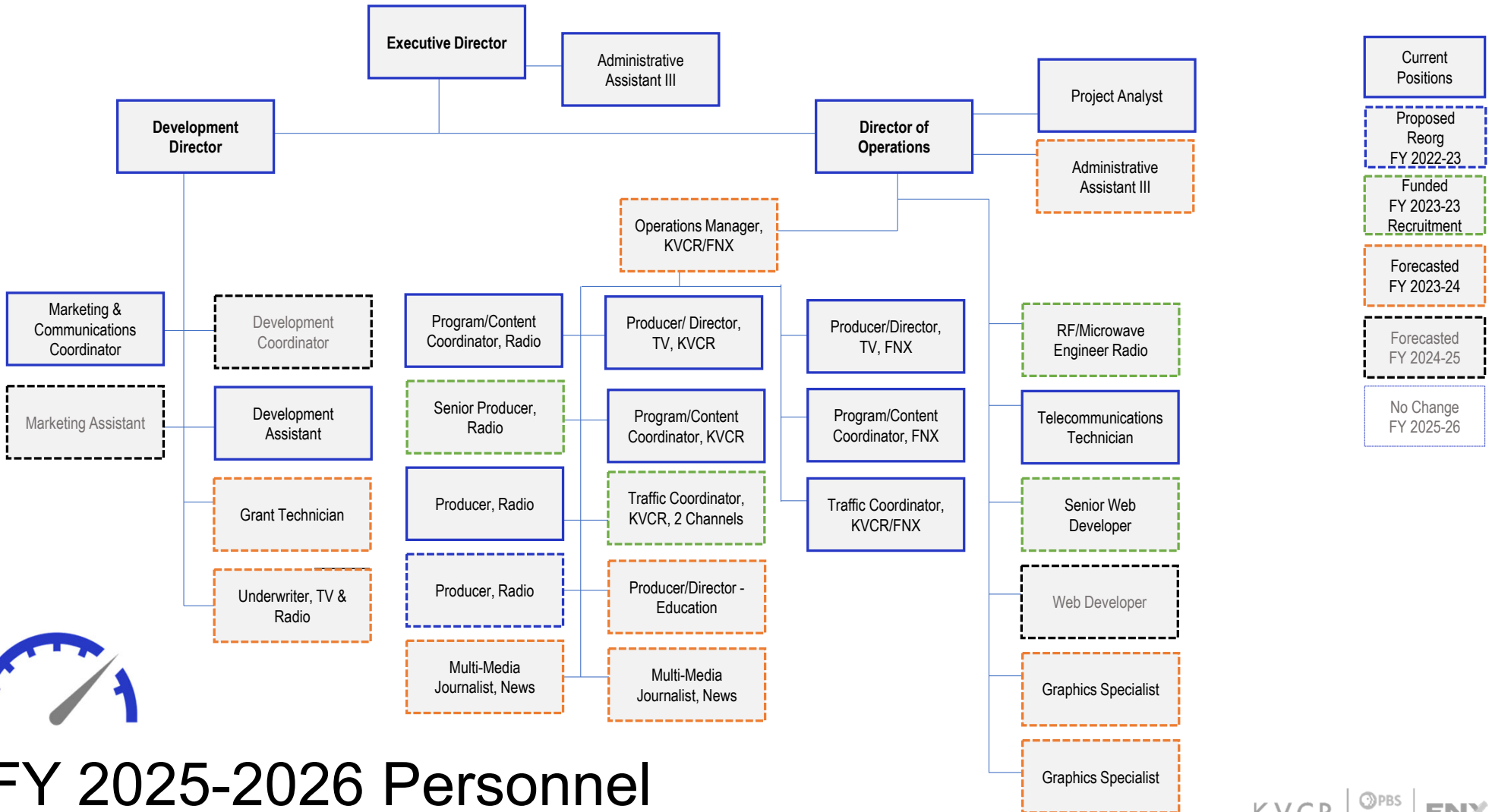


# FY 2025-2026 Highlights

	DESCRIPTION	FY 2026
<b>Revenues:</b>		
1	Corporation for Public Broadcasting Grant	709,040
2	Other Grants	540,000
3	Pledges (net of expenses)	1,195,000
4	Underwriting	791,250
5	Contributions, Gifts	35,000
5a	FY21-22 State Grant #1 Annual Contributions	580,000
5b	FY22-23 Federal Grant Annual Contributions	-
5c	FY22-23 State Grant #2 Annual Contributions	1,125,000
6	Rentals and Leases	570,000
7	Other Local Revenues	329,750
8	Earnings on \$21M Endowment from PARS	1,050,000
9	Tribal Sponsorships	175,000
10	<b>Total Revenues</b>	<b>7,100,040</b>
<b>Expenditures:</b>		
11	Classified Salaries	2,907,733
12	Benefits	1,524,844
13	Supplies & Materials	18,200
14	Other Expenses & Services	2,639,414
15	Capital Outlay	3,450
16	<b>Total Expenditures</b>	<b>7,093,641</b>
17	Net Increase (Decrease) in Fund Balance	6,399
18	Estimated Beginning Fund Balance July 1	317,906
19	Estimated Ending Fund Balance June 30	324,305

## INCREASED REVENUES

- State Grant:
  - PBS, NPR, and Content - \$580,000 (Last Year)
- State Grant:
  - Second Annual Contribution - \$1.1 Million
- Fundraising Efforts:
  - Increase in pledges - \$300,000
  - Increase in underwriting - \$200,000



# FY 2025-2026 Personnel





# FY 2025-2026 Outcomes

- 1) **Align KVCR with the Media Academies**
  - Student Involvement with implementation of Strategic Direction #3
  - Media Academies Integration
  
- 2) **Ensure Financial Stability for KVCR**
  - PBS, NPR, and Content Grant
  - State Grant
  - Increase Fundraising Efforts
  
- 3) **Provide TV & Radio Content Relevant to the SBCCD Community**
  - Continue providing PBS and NPR to the SBCCD Community
  - Increase Community Affairs With Local Programming / News
  - Implement Additional Digital Services



# FY 2026-2027 Highlights

DESCRIPTION		FY 2027
<b>Revenues:</b>		
1	Corporation for Public Broadcasting Grant	720,000
2	Other Grants	565,000
3	Pledges (net of expenses)	1,215,000
4	Underwriting	850,000
5	Contributions, Gifts	45,000
5a	FY21-22 State Grant #1 Annual Contributions	-
5b	FY22-23 Federal Grant Annual Contributions	-
5c	FY22-23 State Grant #2 Annual Contributions	1,750,000
6	Rentals and Leases	570,000
7	Other Local Revenues	361,500
8	Earnings on \$21M Endowment from PARS	1,050,000
9	Tribal Sponsorships	180,000
10	<b>Total Revenues</b>	<b>7,306,500</b>
<b>Expenditures:</b>		
11	Classified Salaries	2,982,145
12	Benefits	1,551,595
13	Supplies & Materials	18,450
14	Other Expenses & Services	2,686,264
15	Capital Outlay	3,450
16	<b>Total Expenditures</b>	<b>7,241,904</b>
17	Net Increase (Decrease) in Fund Balance	64,596
18	Estimated Beginning Fund Balance July 1	324,305
19	Estimated Ending Fund Balance June 30	388,901

## INCREASED REVENUES

- State Grant:
  - Third Annual Contribution - \$1.8 Million
- Fundraising Efforts:
  - Continue innovation of local fundraising, including digital
- Additional Grants:
  - Continue innovation of grant writing

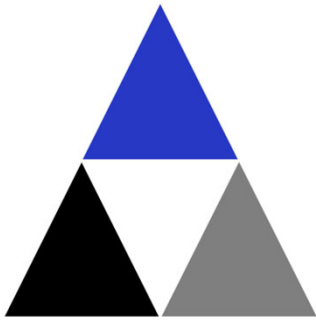




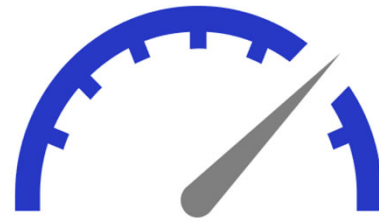


# FY 2026-2027 Outcomes

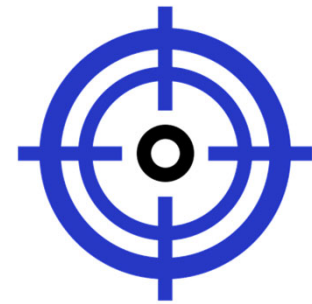
- 1) **Align KVCR with the Media Academies**
  - Student Involvement with implementation of Strategic Direction #3
  - Media Academies Integration
  
- 2) **Ensure Financial Stability for KVCR**
  - State Grant
  - Increase Fundraising Efforts
  
- 3) **Provide TV & Radio Content Relevant to the SBCCD Community**
  - Continue providing PBS and NPR to the SBCCD Community
  - Increase Community Affairs With Local Programming / News



Inspiring



Assessing



Adjusting



# Strategies for Accelerating Achievement of KVCR | Inspiring Possibilities Plan

- 1) **Align KVCR with the Media Academies**
  - Student Involvement with implementation of Strategic Direction #3
  - Media Academies Integration
  
- 2) **Ensure Financial Stability for KVCR**
  - State Grants
  - Federal Grant
  - Local Partnerships
  - Increasing Fundraising Efforts
  - Increasing Grant Applications Efforts
  
- 3) **Provide TV & Radio Content Relevant to the SBCCD Community**
  - Local Partnerships
  - PBS and NPR
  - Local Programming / News
  - Digital Services



# KVCR Five-Year Forecast

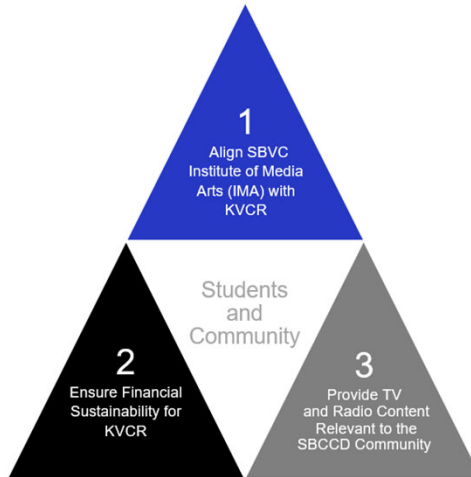
	DESCRIPTION	Unaudited FY 2022	FY 2023	FY 2024	FY 2025	FY 2026	FY 2027
<b>Revenues:</b>							
1	Corporation for Public Broadcasting Grant	617,227	621,160	625,000	709,040	709,040	720,000
2	Other Grants	955,957	335,000	350,000	515,000	540,000	565,000
3	Pledges (net of expenses)	1,417,697	801,976	1,020,000	1,090,000	1,195,000	1,215,000
4	Underwriting	408,196	540,000	625,000	690,000	791,250	850,000
5	Contributions, Gifts	3,392	37,833	605,000	305,000	35,000	45,000
5a	FY21-22 State Grant #1 Annual Contributions	-	1,209,226	955,000	1,078,872	580,000	-
5b	FY22-23 Federal Grant Annual Contributions	-	500,000	500,000	-	-	-
5c	FY22-23 State Grant #2 Annual Contributions	-	-	-	600,000	1,125,000	1,750,000
6	Rentals and Leases	586,020	550,000	560,000	570,000	570,000	570,000
7	Other Local Revenues	62,621	820,157	910,207	275,250	329,750	361,500
8	Earnings on \$21M Endowment from PARS	1,050,000	1,050,000	1,050,000	1,050,000	1,050,000	1,050,000
9	Tribal Sponsorships	-	40,000	50,000	160,000	175,000	180,000
10	<b>Total Revenues</b>	<b>5,101,110</b>	<b>6,505,352</b>	<b>7,250,207</b>	<b>7,043,162</b>	<b>7,100,040</b>	<b>7,306,500</b>
<b>Expenditures:</b>							
11	Classified Salaries	1,519,839	1,958,377	2,739,340	2,806,557	2,907,733	2,982,145
12	Benefits	660,845	795,452	1,208,548	1,488,471	1,524,844	1,551,595
13	Supplies & Materials	12,513	41,350	44,550	19,450	18,200	18,450
14	Other Expenses & Services	2,531,159	2,839,073	3,086,021	2,653,814	2,639,414	2,686,264
15	Capital Outlay	3,075	7,450	6,661	3,450	3,450	3,450
16	<b>Total Expenditures</b>	<b>4,727,431</b>	<b>5,641,703</b>	<b>7,085,120</b>	<b>6,971,742</b>	<b>7,093,641</b>	<b>7,241,904</b>
17	Net Increase (Decrease) in Fund Balance	373,680	863,649	165,087	71,420	6,399	64,596
18	Estimated Beginning Fund Balance July 1	(1,155,930)	(782,250)	81,399	246,486	317,906	324,305
19	Estimated Ending Fund Balance June 30	(782,250)	81,399	246,486	317,906	324,305	388,901



# Alignment with SBCCD Strategic Plan

**GOAL 1 | ELIMINATE BARRIERS TO STUDENT ACCESS AND SUCCESS**

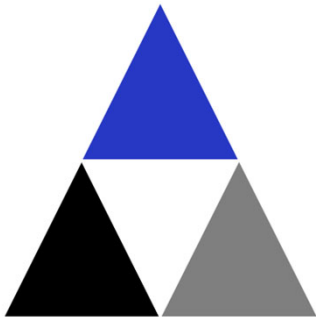
5. Implement a Board- approved KVCR plan.



**GOAL 2 | BE A DIVERSE, EQUITABLE, INCLUSIVE, AND ANTI-RACIST INSTITUTION**

**GOAL 3 | BE A LEADER AND PARTNER IN ADDRESSING REGIONAL ISSUES**

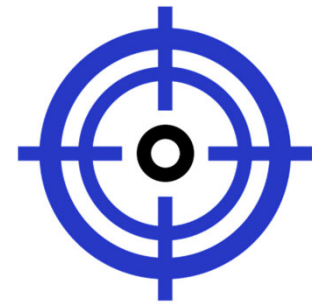
**GOAL 4 | ENSURE FISCAL ACCOUNTABILITY/SUSTAINABILITY**



Inspiring



Assessing



Adjusting

# Next Steps

- Proposed Budget Revision to Board
- Proposed Guiding Principles for \$15 Million State Grant to Board
- Proposed Combination of KVCR and FNX Investment Accounts to Board





Thank you.