



San Bernardino Community College District  
BOARD FINANCE COMMITTEE  
October 04, 2023  
2:30 pm-3:30 pm Pacific Time

## **MEETING AGENDA**

*San Bernardino Community College District Boardroom Extension  
550 E Hospitality Lane, Suite 200, San Bernardino CA*

### **I. Welcome & Introductions - Nathan Gonzales, Chair**

### **II. Public Comment**

*Any member of the public who wishes to address the Committee on any matter is limited to five minutes. The total time for members of the public to speak on the same or a similar issue shall be limited to 20 minutes.*

### **III. Approval of Minutes**

September 14, 2023 (page 3)

### **IV. Current Topics**

- A. Bond Measure M & CC Issuances (page 5)
- B. SBVC Landscape Comprehensive Plan (page 19)

### **V. Updates (as necessary)**

- A. State Budget
- B. Enrollment (page 45)
- C. PARS Investment (page 46)
- D. Bond Construction Program Timeline & Org Chart (page 48)
- E. Budget Revenue & Expenditure Report (page 50)
- F. BOT Current Year Budget to Actual Expenditures (page 53)

### **VI. Future Topics**

- A. BFC Planning Calendar (page 54)
- B. Trustee Suggestions

### **VII. Next Meeting & Adjournment**

- A. The next meeting of the Board Finance Committee is scheduled for November 9, at 2:30 p.m. in the Boardroom Extension.
- B. Adjournment

*SBCCD | Mission:*

*SBCCD positively impacts the lives and careers of our students, the well-being of their families, and the prosperity of our community through excellence in educational and training opportunities.*

*BFC Charge: The SBCCD BFC exists as a standing, advisory committee comprised of less than a quorum of Board members and is subject to the California Public Meetings Brown Act. The committee is charged with:*

- Increasing the efficiency of the Board of Trustees by performing time-consuming research on its behalf regarding all fiscal matters of the District.*
- Improving clarity by providing a platform for detailed questions not conducive to the flow of monthly business meetings.*
- Promoting transparency of the SBCCD budgeting process and fiscal matters through detailed discussion of these topics in an open forum.*
- Fostering an environment of understanding by communicating findings and formulating final recommendations to the Board of Trustees.*





## Board of Trustees Finance Committee (BFC)

Meeting Minutes – September 14, 2023, 2:30 p.m.

**Members Present:** Trustee Gonzales, Chair, and Trustee Houston

**Members Absent:** Trustee Harrison

**Staff Present:**

- Executive Vice Chancellor Jose Torres
- Director of Fiscal Services Strong
- Associate Director, Legislative & Community Relations Ynez Canela

### I. WELCOME & INTRODUCTIONS

*Trustee Gonzales called the meeting to order at 2:30 p.m.*

### II. PUBLIC COMMENT

*There were no public comments.*

### III. APPROVAL OF MINUTES OF August 10, 2023

*Trustee Houston made a motion to approve the minutes which Trustee Gonzales seconded. The motion was approved by the following vote.*

*Ayes: Trustees Gonzales and Houston*

*Noes: None*

*Abstentions: None*

*Absent: Trustee Harrison*

### IV. CURRENT TOPICS

#### Bond Measure Construction Update

*BFC members heard from staff on the status of SBCCD's Bond Construction Program Work Force. Presented by Associate Director Ynez Canela, the document outlined how well SBCCD is meeting its Board Policy 6610 local business requirements. Reporting on 14 projects, to date we have:*

- *Hired 132 local construction contractors.*
- *Paid \$1.4 million to local workers.*
- *Contracted with local construction and professional services companies in the amount of \$163 million.*

*While we are hitting our targets for local business, this doesn't always translate into the hiring of local residents. More work needs to be done to maximize bond dollars in our community. Staff will continue to improve reporting techniques as the bond construction program expands.*

V. UPDATES

A. State Budget *(not discussed)*

B. Enrollment

*Enrollment to date is strong at 7,765, which is 58% of the 2023-24 growth target of 4%. Particularly encouraging is that at this time in 2019 (pre-COVID), our FTES were also at 59% of target.*

C. Investment Properties – Occupancy & Fiscal Performance

*Commercial Properties are at 86% capacity, which is very good. Trustee Gonzales expressed interest in touring the other two buildings and Executive Vice Chancellor Torres advised he would set this up for the BFC.*

D. PARS Investment

*SBCCD's PARS Pension Rate Stabilization Trust account continues to perform well, relieving general fund costs of over \$17 million since its inception in 2016. At the recommendation of Trustee Gonzales, language will be added to this document to indicate that the figures represent performance since inception.*

E. Bond Construction Program Timeline & Org Chart *(not discussed)*

F. Budget Revenue & Expenditure Report *(not discussed)*

G. BOT Current Year Budget to Actual Expenditures *(not discussed)*

VI. FUTURE TOPICS *(not discussed)*

A. BFC Planning Calendar *(not discussed)*

B. Trustee Suggestions

*There were no suggestions for future topics.*

VII. NEXT MEETING DATE & ADJOURNMENT

A. October Meeting

*It was determined that the BFC would convene on October 4, 2023, at 2:30 p.m.*

B. Adjournment

*The meeting adjourned at 2:56 p.m.*



# BOND MEASURES M & CC

*Presented to the Board Finance Committee  
on Oct 4, 2023*



*Presented by*

***Ivory Li***

*Managing Director*

*Public Finance Investment Banking*

*Piper Sandler & Co.*

***Chet Wang***

*Managing Director*

*Keygent Advisors*

# Measure M

## Feb 2008

### \$500 Million

\$295.85 million  
accessed to date

\$204.15 million  
remains unissued

Tax rate limit: \$25 per  
\$100,000 of assessed  
value

#### Present Status

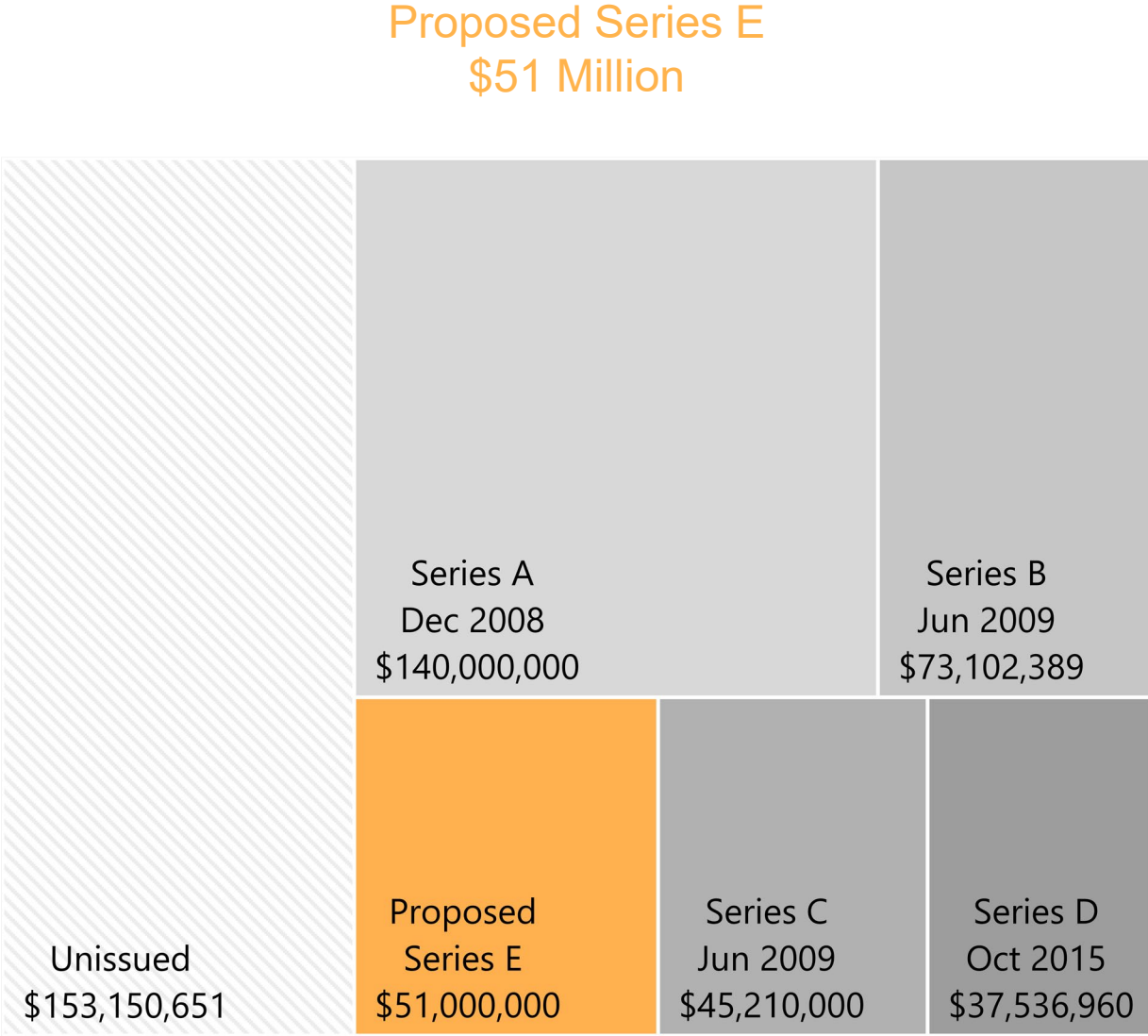
Unissued \$204,150,651	Series A Dec 2008 \$140,000,000	Series B Jun 2009 \$73,102,389
	Series C Jun 2009 \$45,210,000	Series D Oct 2015 \$37,536,960

Measure M  
Feb 2008  
\$500 Million

\$295.85 million  
accessed to date

\$204.15 million  
remains unissued

Tax rate limit: \$25 per  
\$100,000 of assessed  
value



# Measure CC

## Nov 2018

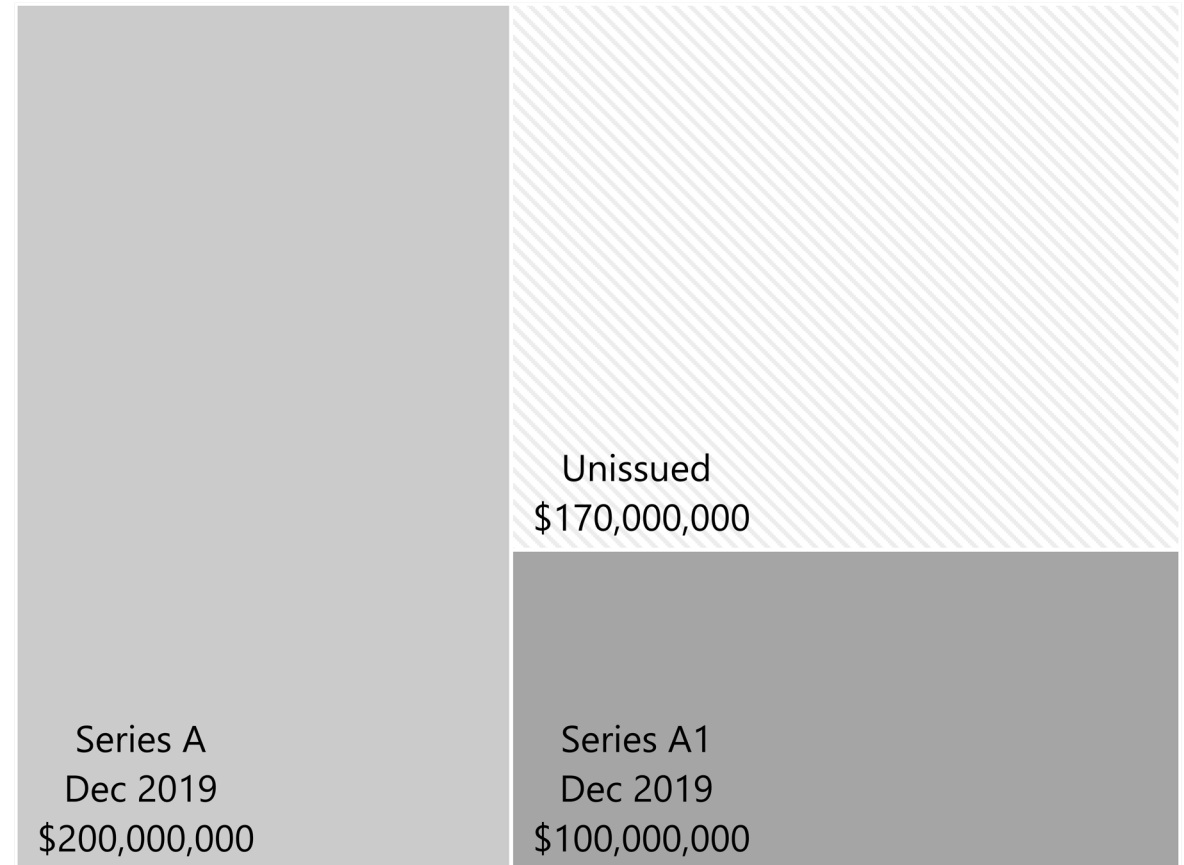
### \$470 Million

\$300 million accessed  
to date

\$170 million remains  
unissued

Tax rate limit: \$25 per  
\$100,000 of assessed  
value

#### Present Status

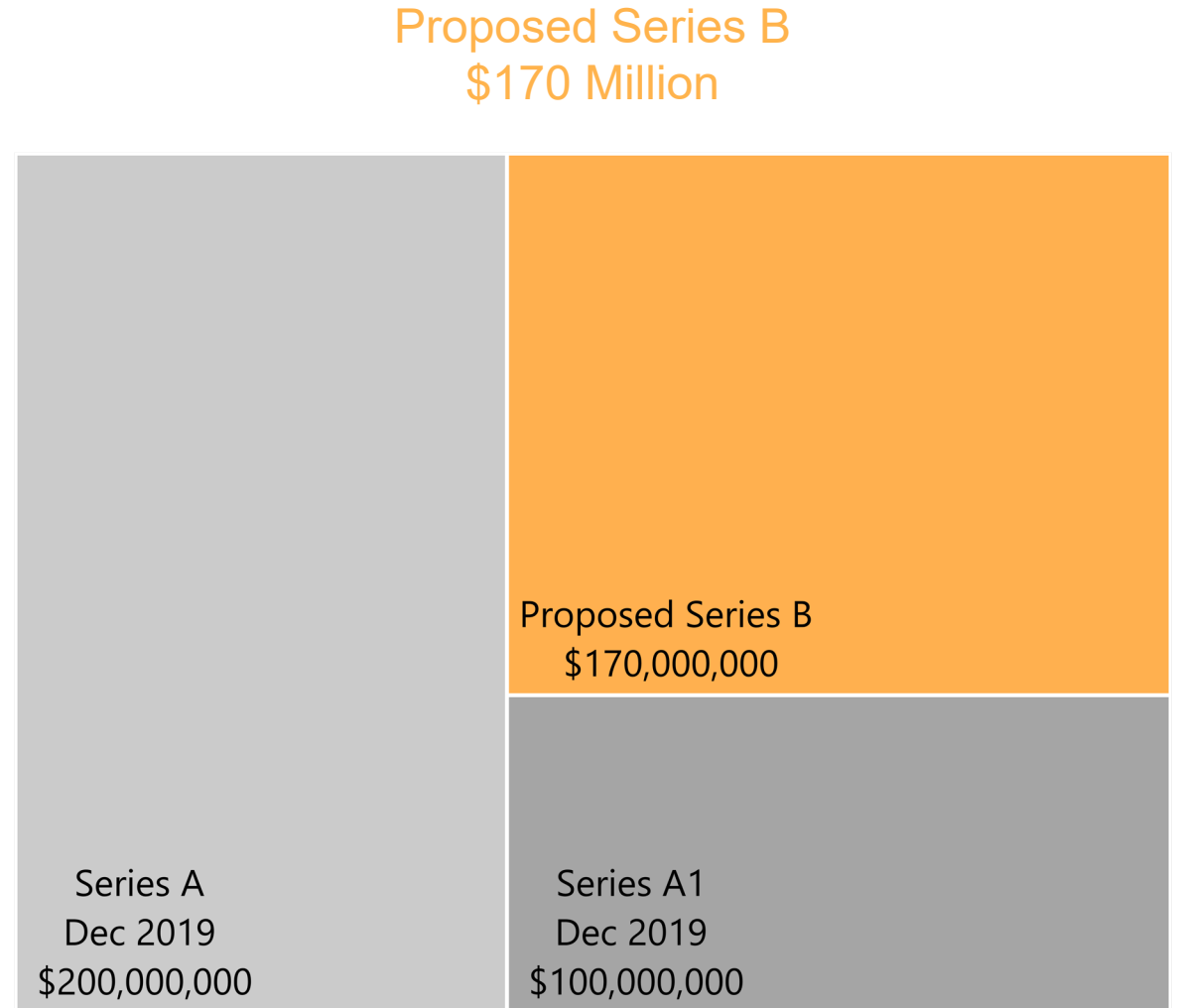


# Measure CC Nov 2018 \$470 Million

\$300 million accessed  
to date

\$170 million remains  
unissued

Tax rate limit: \$25 per  
\$100,000 of assessed  
value

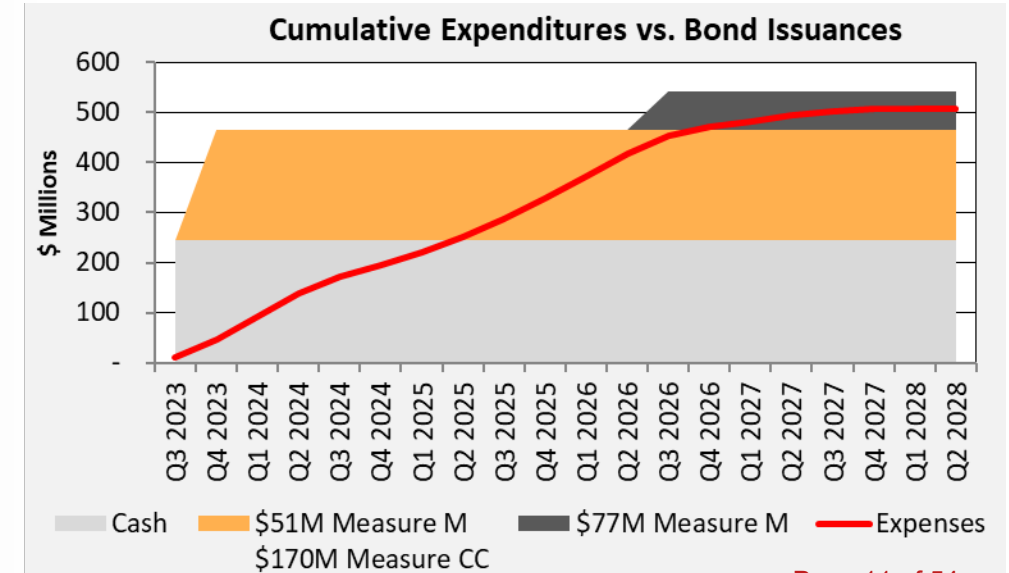
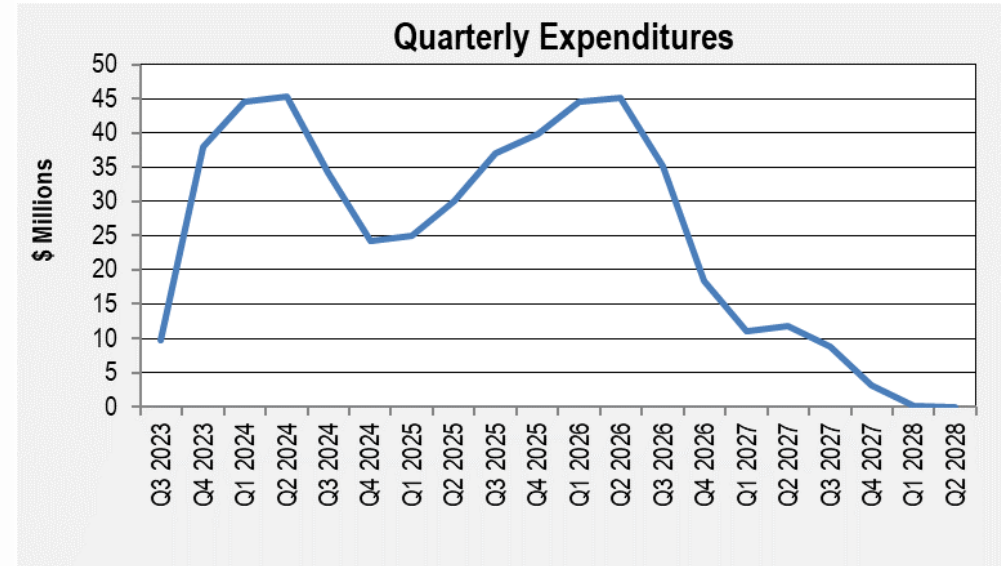




# SBCCD Project

## Cash Flow

Period	Cash Rqmt	Cumulative Rqmt	Bonds	Cumulative Balance
Q2 2023				254,224,432
Q3 2023	9,716,958	9,716,958		244,507,474
Q4 2023	38,025,659	47,742,617	221,000,000	427,481,815
Q1 2024	44,594,233	92,336,850		382,887,582
Q2 2024	45,350,827	137,687,677		337,536,755
Q3 2024	34,154,397	171,842,074		303,382,358
Q4 2024	24,282,494	196,124,568		279,099,864
Q1 2025	24,912,997	221,037,565		254,186,867
Q2 2025	30,080,057	251,117,622		224,106,810
Q3 2025	36,941,188	288,058,810		187,165,622
Q4 2025	39,893,520	327,952,330		147,272,102
Q1 2026	44,541,113	372,493,443		102,730,989
Q2 2026	45,193,365	417,686,808		57,537,624
Q3 2026	35,174,245	452,861,053	77,000,000	99,363,379
Q4 2026	18,384,378	471,245,431		80,979,001
Q1 2027	11,008,249	482,253,680		69,970,752
Q2 2027	11,823,101	494,076,781		58,147,651
Q3 2027	8,878,420	502,955,201		49,269,231
Q4 2027	3,220,580	506,175,781		46,048,651
Q1 2028	52,736	506,228,517		45,995,915
Q2 2028	-	506,228,517		45,995,915
			298,000,000	



# SBCCD

## Assessed Value

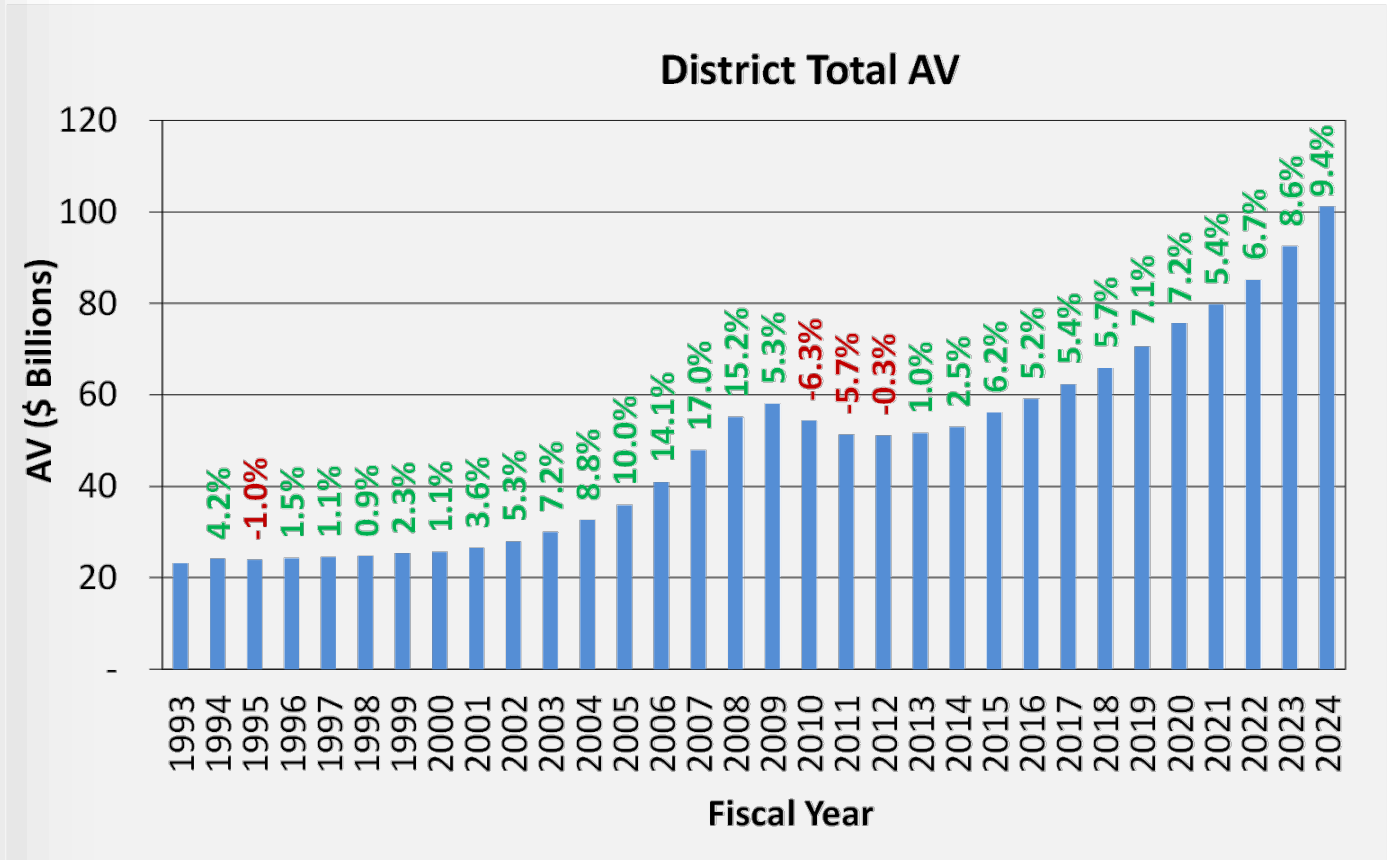
### History <sup>(1)</sup>

Grew 9.4% in 2023-24 to  
\$101.16 billion

#### Annualized Growth Rates

- 5 year: 7.5%
- 10 year: 6.7%
- 20 year: 5.8%
- 30 year: 4.9%

(1) Source: California Municipal Statistics and  
San Bernardino and Riverside Counties

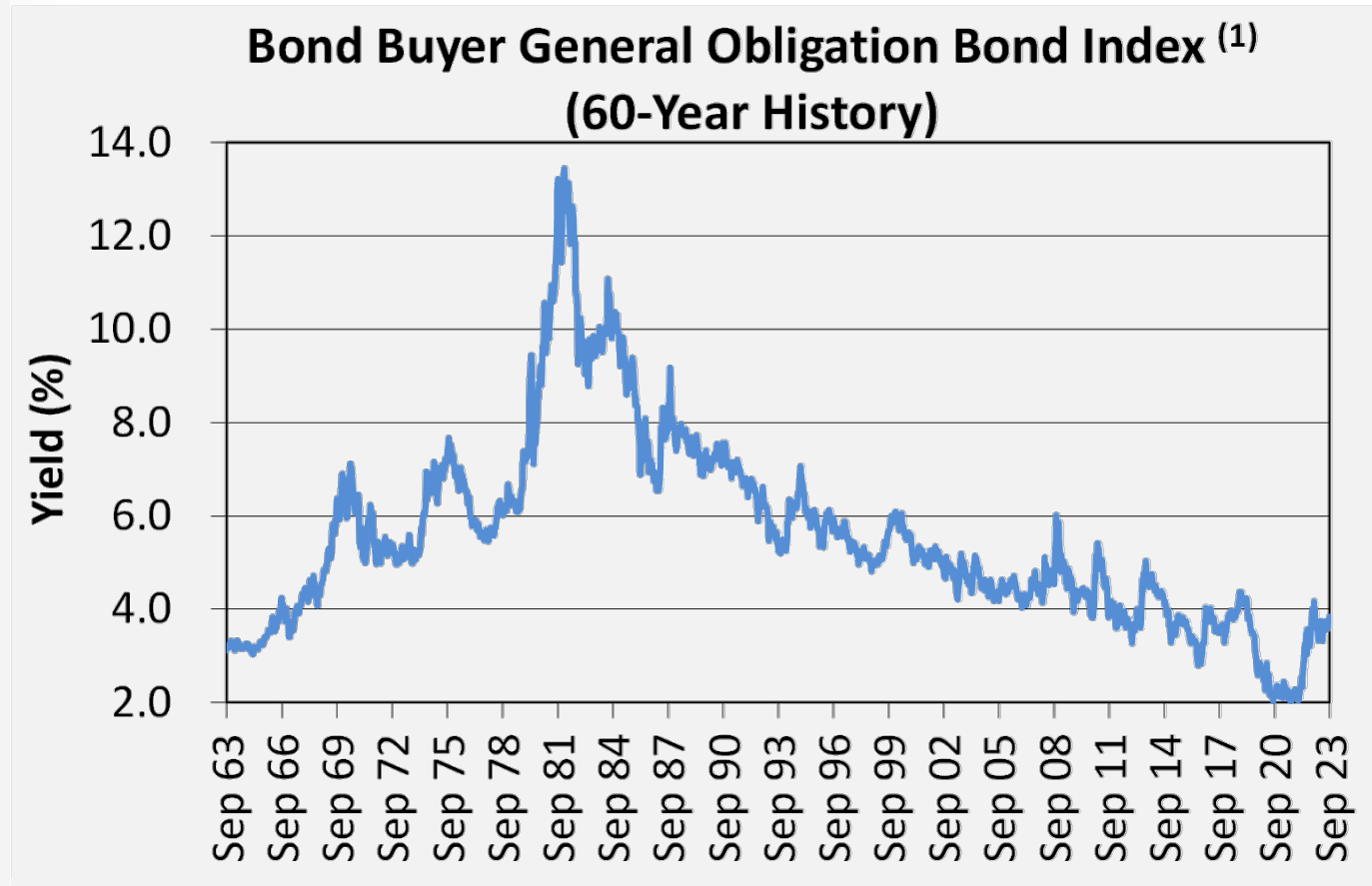


# Interest Rates <sup>(1)</sup>

Following record lows during the pandemic, interest rates rose due to:

- Supply chain/labor constraints
- Inflation
- War in Ukraine
- Banking crisis
- Fed/other central bank actions in increasing interest rates (both taken and expected)

*(1) Index reflects average yield to maturity of 20 GO bonds with 20-year maturities rated 'Aa2' by Moody's and 'AA' by S&P; Source: The Bond Buyer & Bloomberg*



# Measure M Issuance Scenario

Issue \$51 million in 2023 and leave capacity for \$77 million in 2026

## Assumptions:

- Annual assessed value growth rate of 4.5%
- Tax rate of \$25 per \$100K assessed value
- Bond type: Current interest bonds

## Estimated Issuance Metrics

### Series E

- \$51 million
- Dec 2023
- Estimate interest rate <sup>(1)</sup> of 4.7%
- Estimated repayment ratio of 1.9 to 1

### Series F

- \$77 million
- Fall 2026
- Estimate interest rate <sup>(1)</sup> of 4.6%
- Estimated repayment ratio of 1.8 to 1

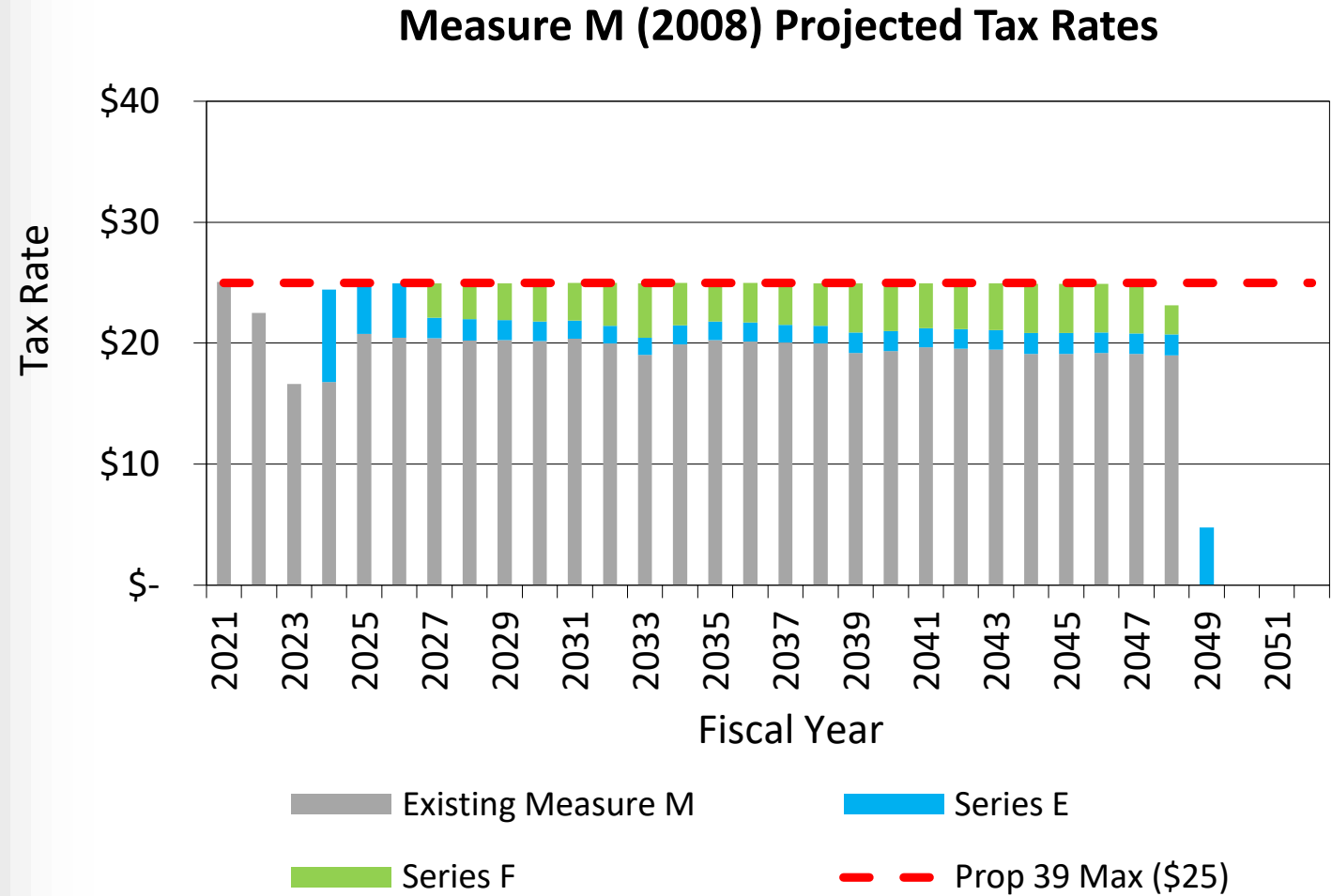
*(1) Represents interest rates provided by Piper Sandler as of Sep 2023. Assumes 'Aa1' rating from Moody's and 'AA' rating from S&P; subject to market fluctuation until bonds are sold*

# Measure M Issuance Scenario

Issue \$51 million in 2023 and leave capacity for \$77 million n 2026

Assumptions:

- Annual assessed value growth rate of 4.5%
- Tax rate of \$25 per \$100K assessed value
- Bond type: Current interest bonds



# Measure CC Issuance Scenario

Issue \$170 million remaining in 2023

Assumptions:

- Annual assessed value growth rate of 4.5%
- Tax rate of \$25 per \$100K assessed value
- Bond type: Current interest bonds

## Estimated Issuance Metrics

### Series B

- \$170 million
- Dec 2023
- Estimate interest rate <sup>(1)</sup> of 4.6%
- Estimated repayment ratio of 1.8 to 1

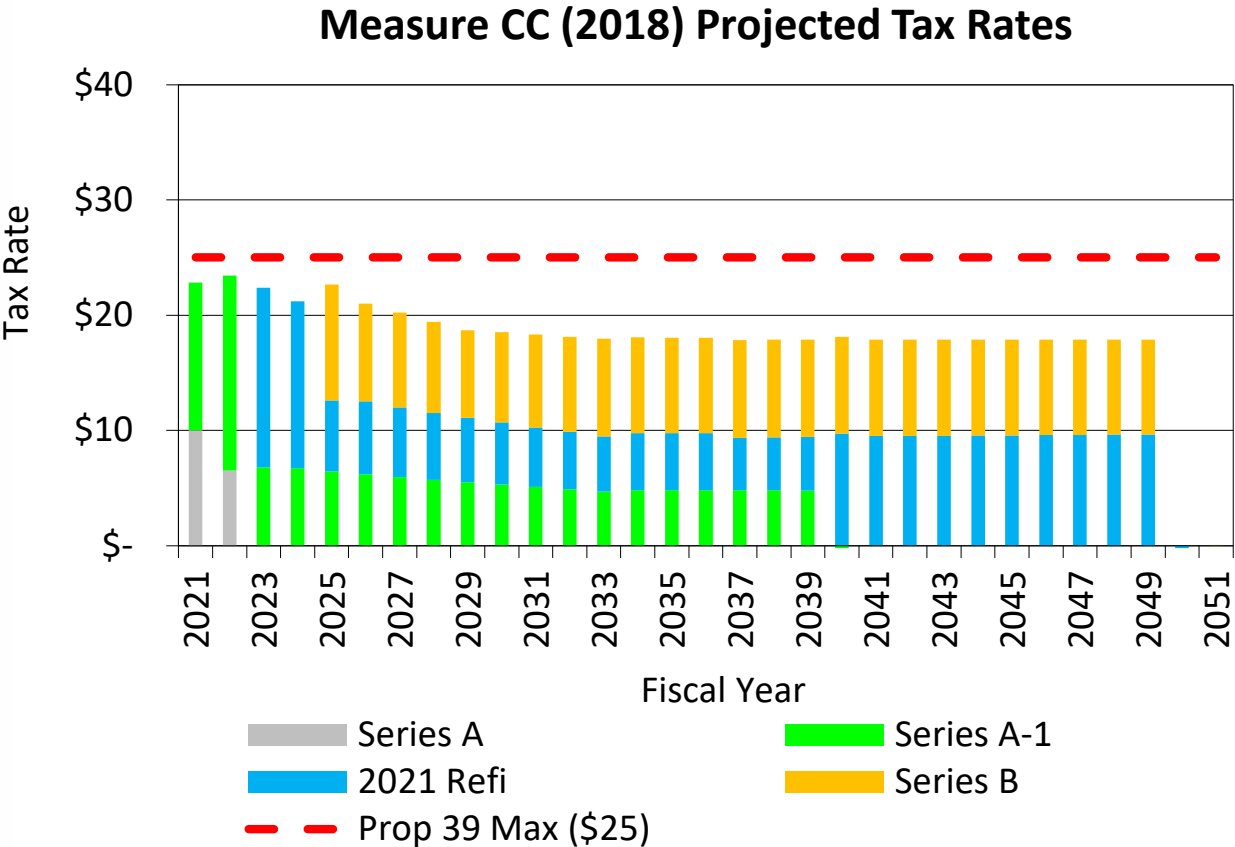
*(1) Represents interest rates provided by Piper Sandler as of Sep 2023. Assumes 'Aa1' rating from Moody's and 'AA' rating from S&P; subject to market fluctuation until bonds are sold.*

# Measure CC Issuance Scenario

Issue \$170 million remaining in 2023

Assumptions:

- Annual assessed value growth rate of 4.5%
- Tax rate of \$25 per \$100K assessed value
- Bond type: Current interest bonds



# Timeline



**Oct 4**

Board  
Finance  
Committee  
meeting

**Oct 19**

Board of  
Trustees  
considers  
approval of  
legal  
documents

**Nov 6**

Credit rating  
meetings

**Late Nov**

Bond sales

**Dec 19**

Bond closing;  
SBCCD  
receives  
proceeds



# San Bernardino Valley College Landscape Master Plan DRAFT



SPURLOCK NAC

October 4, 2023







*Fault Line Promenade*



*Health and Life Sciences Courtyard*



*Oak Grove*



*Bio-garden*



*Greek Theater*



*Auditorium*

## Design Principles

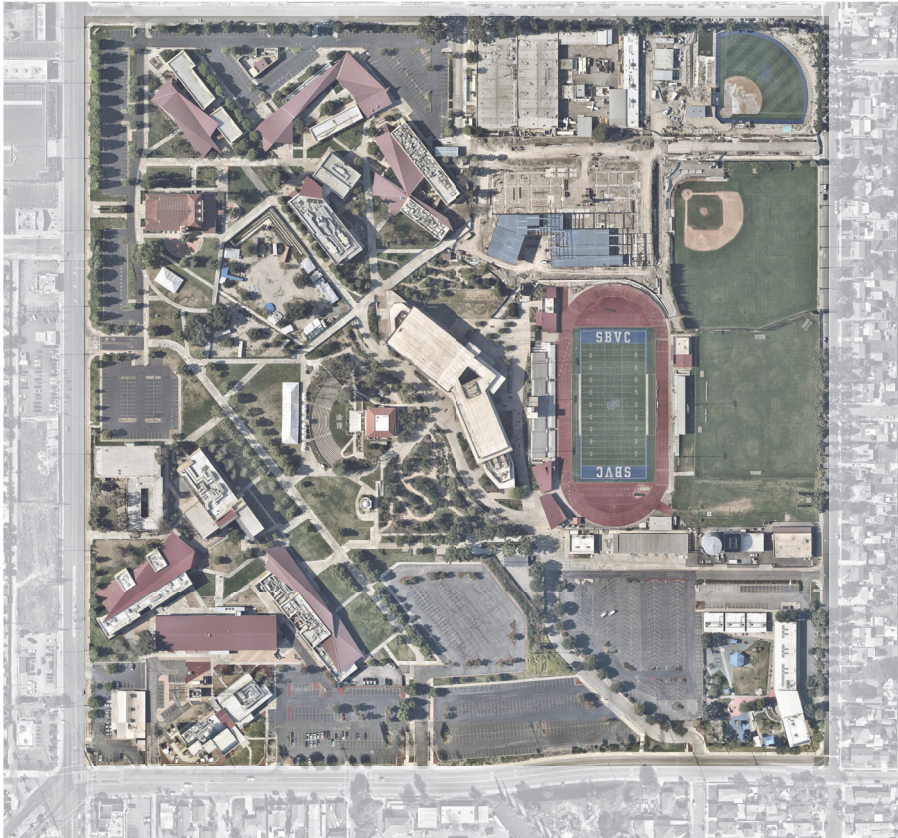
- Reflect unique character of SBVC
- Enhance arrival and wayfinding
- Create functional outdoor program and amenities
- Use and interpret sustainable strategies
- Beautify the landscape
- Campus-wide enriched outdoor environment



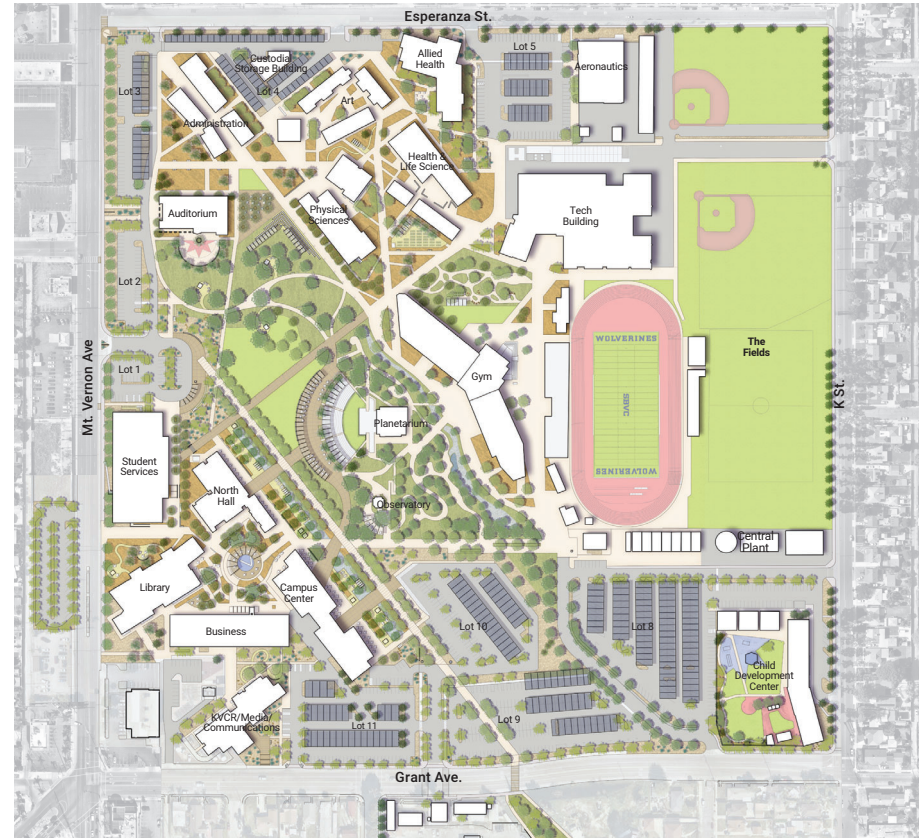


## Master Plan Scope

These comparative aerial views of the campus show the majority of existing trees, hardscape, parking and courtyards to remain. The landscape master plan supplements the existing campus features and frameworks with critical new features like seating, shade, outdoor classrooms and learning gardens as described in more detail in the following sections. The majority of recommendations address enhancements to the community-facing edges and entries of the campus, revitalization of the campus core (the Glade), clarification of circulation and wayfinding and introduction of beautiful, durable, sustainable planting strategies to connect, frame and enrich these spaces.



Current Campus Plan



Proposed Master Plan





# Master Plan Components



- Legend**
- 1 Drop Off
  - 2 Arrival Plaza
  - 3 Event Lawn
  - 4 Central Event Plaza
  - 5 Shaded Greek Theater
  - 6 Shade Structure
  - 7 Fault Line Promenade
  - 8 Outdoor Classrooms
  - 9 Outdoor Cafe
  - 10 Business Quad
  - 11 Auditorium Event Area
  - 12 Arts Grove
  - 13 Shaded Amphitheater
  - 14 KVCR Event Patio
  - 15 Oak Trail
  - 16 Oak Savanna
  - 17 Richardson Walk
  - 18 Community Garden
  - 19 Medicinal Garden
  - 20 Bio Garden
  - 21 Mojave Desert Garden
  - 22 Stormwater Garden
  - 23 Geology Garden
  - 24 Mediterranean Garden
  - 25 Chaparral Education Garden
  - 26 Foothills Education Garden
  - 27 Indigenous Garden
  - 28 Collaboration Space
  - 29 Informal Seating Area
  - 30 Directory Kiosk
  - 31 New Crosswalk
  - 32 Monument Signage
  - 33 E-Bike Charging & Bike Corral
  - 34 Solar Shade Structure
  - 35 Greenbelt Connection to Student Housing
  - 36 EV Charging Station

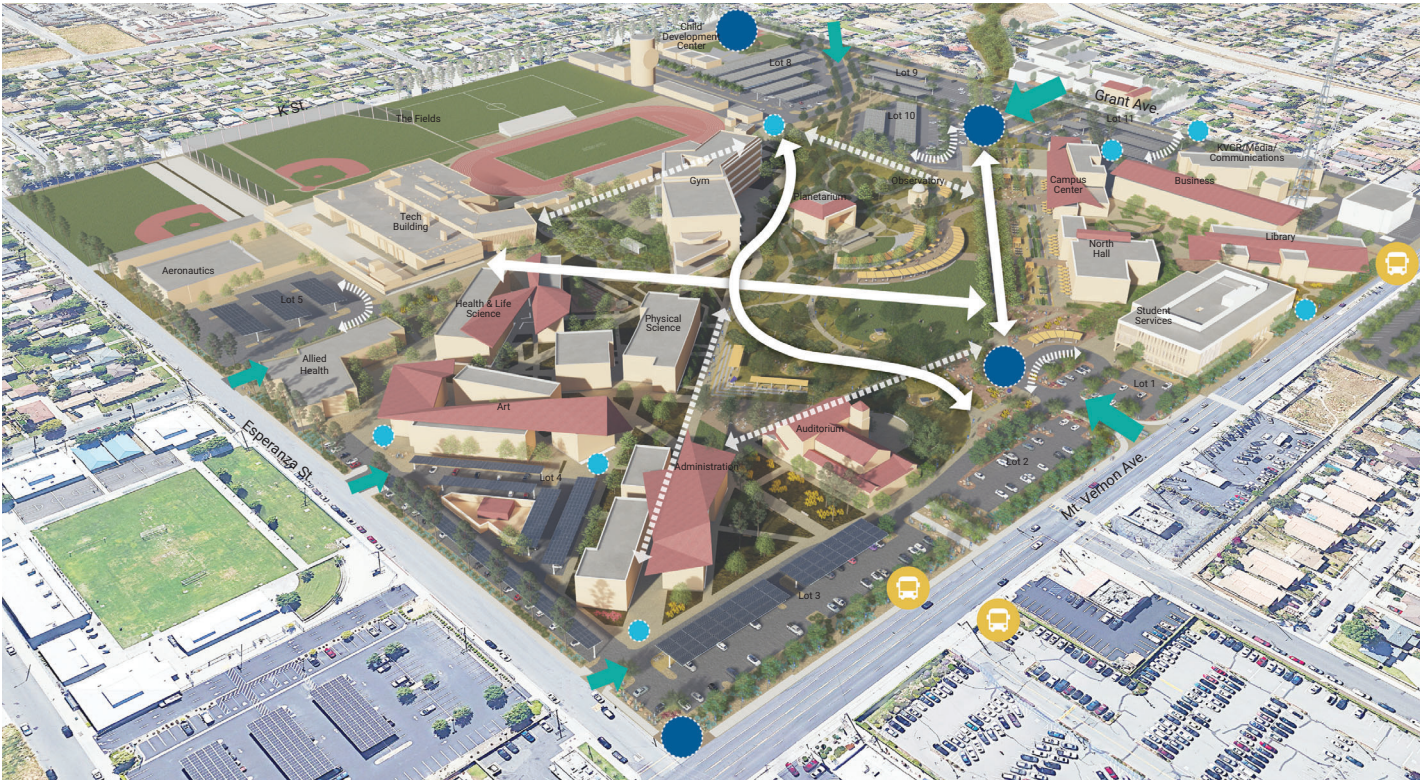
## Overall Campus View to Southeast

Existing core SBVC campus open space framework elements are maintained and enhanced including the North Arrival Plaza, Fault Line Promenade, Arts Plaza and Oak Garden. Site enhancements include additional shade via a combination of architectural shade structures, pavilions and canopy trees, strategically located close to main circulation, seating and gathering spaces; native and xeric planting with iconic desert displays at entry and arrival points; purposeful use of lawn at limited event areas; strengthened circulation framework to improve wayfinding; small seating clusters, outdoor classrooms and learning gardens and large event and gatherings spaces to support the full range of community activities throughout the day. The following pages overlay framework elements on this aerial view including circulation, program and gathering, gardens and landscape spaces and sustainability measures that align with Envision Verification Program.





# Arrival and Circulation

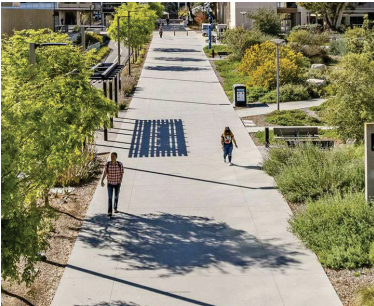


- Legend**
  - Drop Off
  - Major Pedestrian Connection
  - Secondary Pedestrian Connection
  - Major Vehicular Entry
  - Vehicular Entry
  - Main Visitor Arrival
  - Pedestrian Entry
  - Transit

Visitor arrival starts at the street with enhanced streetscape planting, iconic desert specimens and monument signage at northwest and southeast campus corners. Pedestrian entries receive similar planting treatment and signage. Major interior arrival plazas are clearly defined through accent hardscape and planting that frame views into the campus along main circulation corridors. The existing Oak Garden trail is extended to the western edge of the campus, intersecting and connecting important secondary paths and promenades while providing access to new seating and program areas in the campus core.



Pedestrian Plaza



Promenade



Pedestrian Pathway



Drop Off



Welcoming Arrival Experience



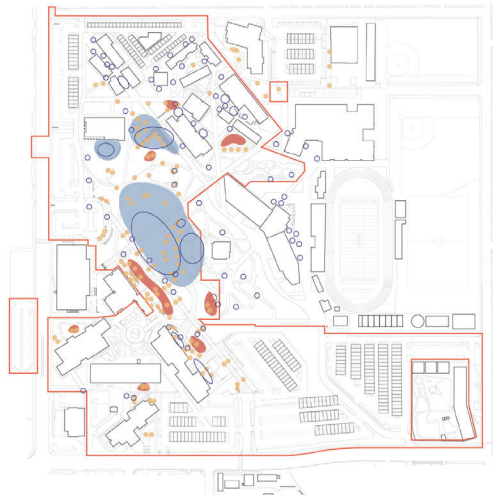
Program and Gathering



Additional seating and gathering spaces at a variety of scales accommodate the full range of informal and organized campus activities. Seating areas are located close to circulation for convenience and to encourage interaction and connection. Where possible, seating is located adjacent to existing trees and structures to take advantage of existing shade. New shade structures are proposed at the Greek Amphitheater and adjacent Event Plaza, existing seating steps east of the Auditorium, north Arrival Plaza and proposed Outdoor Classrooms. Outdoor collaboration and classroom spaces include power supplies and charging stations to support studying, and event spaces include power for special audio-visual needs. Large event spaces are located close to vehicular-rated circulation to facilitate equipment loading.

- Legend
- Small
  - Medium
  - Large
  - Existing Seating

New Outdoor Seating and Program		
Space Type	Description	Total SF/QTY
Small Gathering Areas		
Informal Seating	Fixed and movable lounge seating, benches and seatwalls	306 (QTY)
Cafe Seating	Fixed and movable tables and chairs adjacent to buildings	436 (QTY)
Collaboration Spaces	Fixed and movable seating with power pedestals along circulation	258 (QTY)
Medium Gathering Areas		
Outdoor Classrooms	Shaded classroom spaces for up to 30 people	3500 (S.F.)
Learning Gardens	Includes geology, community, indigenous, medicinal and pollinator gardens	50,615 (S.F.)
Large Gathering Areas		
Event Plaza	40' paved multi-purpose esplanade w/ shade structure	16,268 (S.F.)
Shaded Amphitheater	Shade structure at existing Greek Amphitheater	4,700 (S.F.)
Event Lawn	Multi-purpose lawn serving the campus core	46,807 (S.F.)
Arts Plaza	Tree bosque plaza w/ multi-level seatwalls and shade structure	11,530 (S.F.)
Auditorium Event Area	Enlarged auditorium event paving	5,120 (S.F.)





# Learning Landscapes



Legend

- Iconic Planting
- Educational Garden
- Native Plant Communities
- Stormwater Treatment
- Streetscape
- Multi-purpose Lawn

The SBVC community and leadership has requested native plant materials be incorporated into the campus landscape framework to reinforce identity and a unique sense of place. This creates opportunities to thoughtfully group and curate plants to represent distinct regional communities such as desert, foothill chaparral and oak savanna; emphasize ethnobotanical uses such as medicinal and edible plants and larger ecological topics such as stormwater treatment, drought tolerant and pollinator gardens. The Landscape Master Plan proposes to expand on the success of existing education and demonstration gardens through the thoughtful selection and placement of thematic plant palettes that support both campus identity as well as pedagogic goals.



Iconic Planting



Educational Garden



Native Plant Communities



Stormwater Treatment



Streetscape





# Sustainability



- Legend**
- Improve Community Quality of Life with Community Garden
  - Improve Community Mobility with Bike Facilities
  - E-Bike Charging Stations
  - Encourage Sustainable Transportation
  - Improve Access and Wayfinding
  - Preserve Historic and Cultural Resources
  - Enhance View and Local Character
  - Enhance Public Space and Amenities
  - Use Renewable Energy with Solar Panels
  - Reduce Operational Water Consumption
  - Manage Stormwater
  - Enhance Functional Habitats
  - EV Charging Stations
  - Tree Canopy to Reduce Urban Heat Island Effect



Community Garden



Mobility: Bike Storage



Renewable Energy: Solar Panels

The Landscape Master Plan incorporates a diverse set of strategies to achieve SBVC’s sustainability goals and align with Envision Verification Program. These include reducing the heat island effect through installation of shade structures, increasing the tree canopy and limiting hardscape where possible; treating stormwater run-off by draining hardscape to adjacent planting. Locating stormwater treatment areas in low-lying areas of the campus and designing them to be an amenity and learning environment; conserving water through improved irrigation efficiency and the use of native and local adapted plant material; photo-voltaic installations at parking lots and other shade structures; using locally sourced and sustainably manufactured products; encouraging human-powered transportation by improving pedestrian connections and expanded bike facilities; accommodating on-site food production by creating an edible garden for community use.



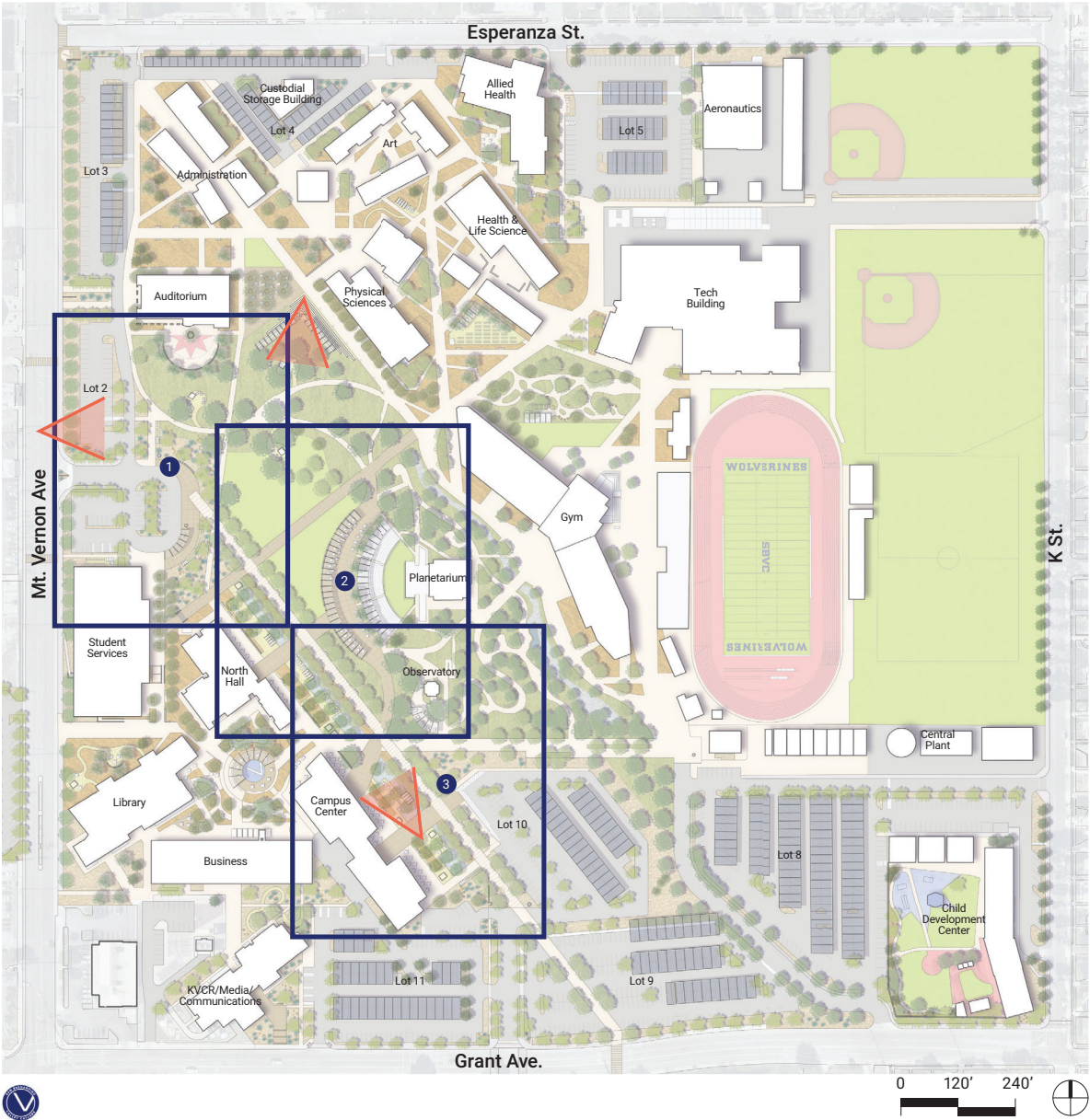


## Sustainability Goals

- **Shade areas** increase by 22,000 square feet
- 1,000 individual **outdoor seats**
- 84,000 square feet of **event and gathering space**
- 54,000 additional square feet of **outdoor classrooms and learning gardens**
- 140,000 square feet of **photo-voltaic panels**
- Additional **bike parking spaces** including **E-bike charging stations** to meet LEED Gold Criteria
- 85% reduction in **Turf Area**
- 90% increase in **Native Planting**
- 33% increase in **Shade Trees**
- 64% reduction in **Water Use**
- Decreased **maintenance**, including mowing, pruning, pesticides and fertilizer application
- Higher-efficiency **irrigation**, including weather-based controllers, low-flow bubblers, high-efficiency rotors and drip irrigation



# Master Plan Focus Areas



## Legend

- 1 Main Entry and Arrival Plaza/ Streetscape
- 2 Central Event Plaza/ Event Lawn
- 3 Outdoor Classrooms/ Stormwater Treatment Garden

Focus View Area

The three focus plan areas within the Landscape Master Plan have been selected as they collectively include key physical framework elements described in the previous section. The following pages illustrate in more detail the vision for the campus including new and expanded seating and program areas that are conveniently located, shaded and inviting; clarified and strengthened planting and circulation frameworks that define and clarify a distinct and cohesive sense of place, reinforce intuitive wayfinding and as equally important, introduce sustainable strategies that mitigate heat-island effect, reduce maintenance and water use, and celebrate local materials.



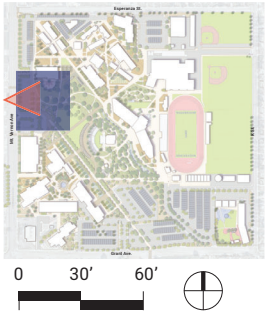
# Main Entry and Arrival Plaza/ Streetscape



## Features

- 1 Drop Off
- 2 Fault Line Promenade
- 3 Arrival Plaza and Shade Structure
- 4 Auditorium Event Area
- 5 Oak Trail
- 6 Mojave Desert Garden
- 7 Oak Savanna
- 8 Waterwise Planting
- 9 Event Lawn
- 10 Stormwater Garden
- 11 Solar Powered Collaboration Table
- 12 Informal Seating Area
- 13 Shaded Amphitheater
- 14 Bench Seating
- 15 Seatwall
- 16 Directory Kiosk
- 17 Relocated SBVC Monument
- 18 Monument Sign
- 19 E-Bike Charging & Bike Corral
- 20 Collaboration Space
- 21 Relocated Memorial Area
- 22 Desert Foothill Planting

## Key Map



Arrival Plaza



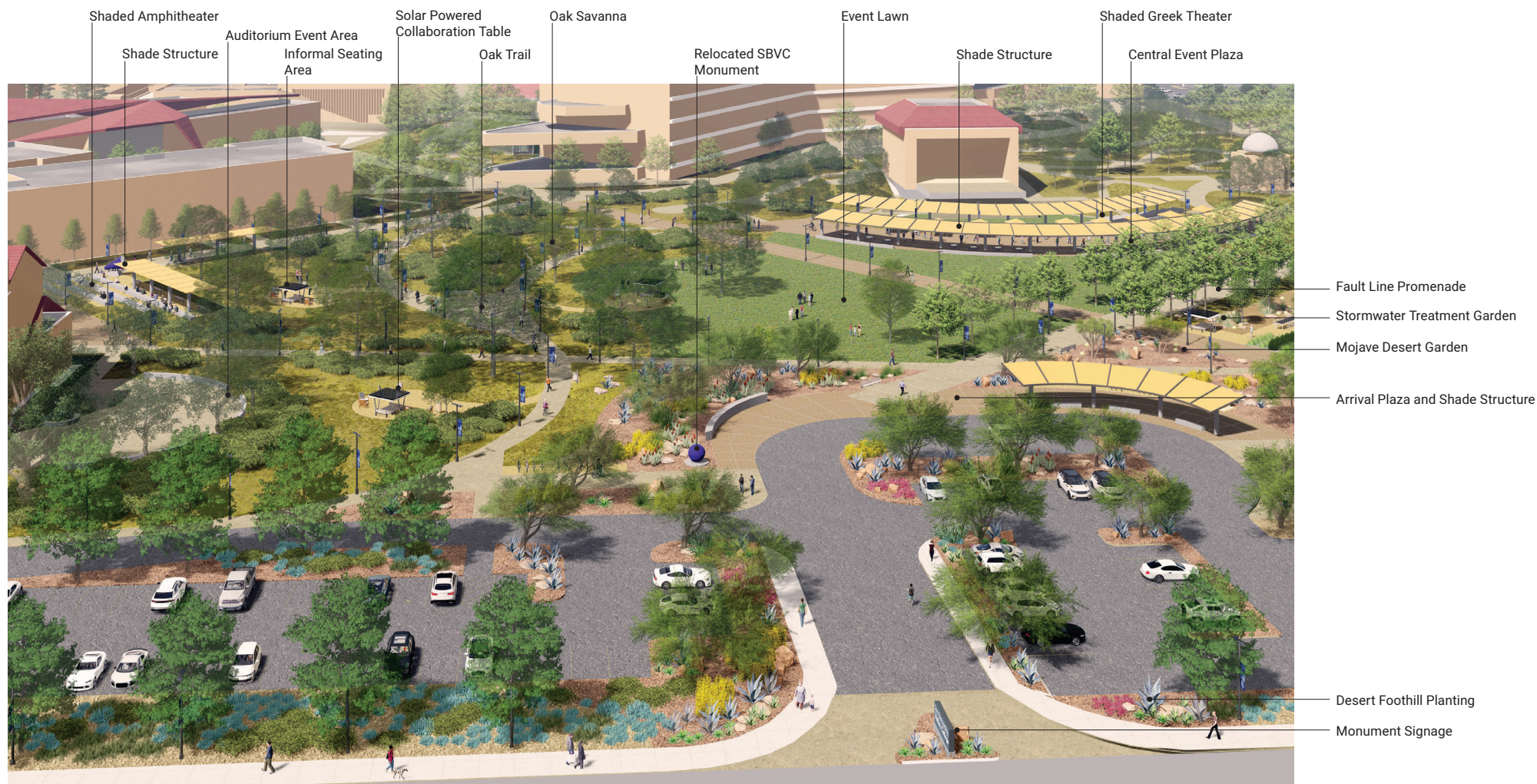
Desert Garden



Bike Parking







## Views to east of Main Entry and Arrival Plaza

Located mid-block off Mt. Vernon Avenue and framed by the historic Auditorium and new Student Services Building, the North Arrival Plaza has expansive views of the heart of SBVC campus activities as well as distant views to the San Gabriel Mountains beyond. New native and drought tolerant planting along the streetscape leads visitors to a welcoming arrival plaza with shaded seating, signage, bike storage facilities surrounded by a dazzling display of specimen succulents and canopy trees that are native to the San Bernardino Valley and Mojave Desert. A campus crossroads, the extended Oak Garden trail and Fault Line Promenade direct students to academic courtyards and campus facilities to the east and south. The expanded Auditorium event plaza, shaded by a ring of canopy trees, and new event esplanade and iconic shade structure, adjacent to the Greek Amphitheater frame seating and gathering spaces set in the Oak Savannah and activities in the multi-purpose event lawn.





Main Entry and Arrival Plaza/ Streetscape Comparison



Existing

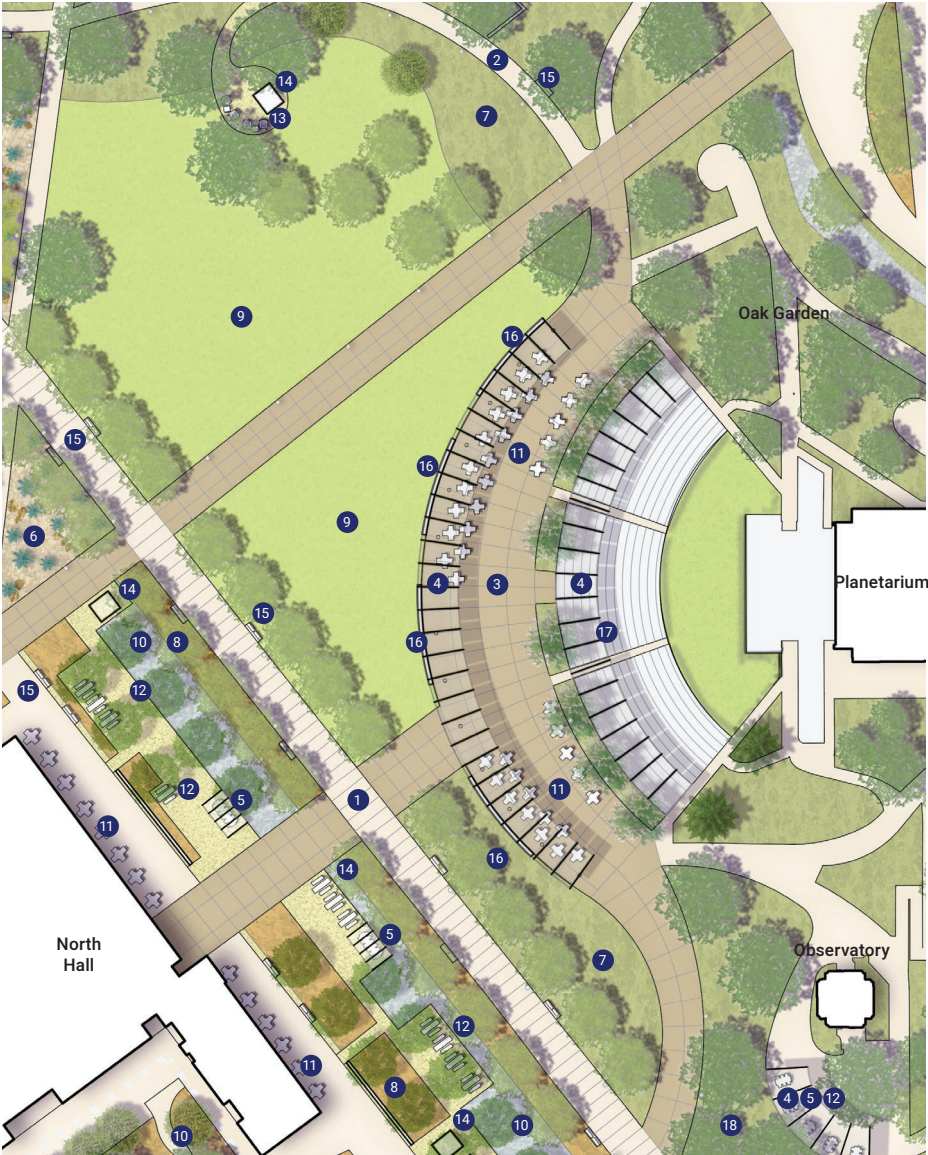


Proposed





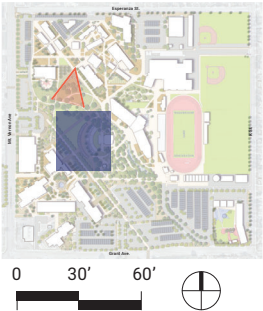
# Central Event Plaza / Event Lawn



## Features

- 1 Fault Line Promenade
- 2 Oak Trail
- 3 Central Event Plaza
- 4 Shade Structure
- 5 Outdoor Classroom
- 6 Mojave Desert Garden
- 7 Oak Savanna
- 8 Waterwise Planting
- 9 Event Lawn
- 10 Stormwater Garden
- 11 Cafe Seating
- 12 Collaboration Space
- 13 Informal Seating
- 14 Solar Powered Collaboration Table
- 15 Bench Seating
- 16 Seatwall
- 17 Shaded Greek Theater
- 18 Geology Garden

## Key Map



Custom Shade Structure

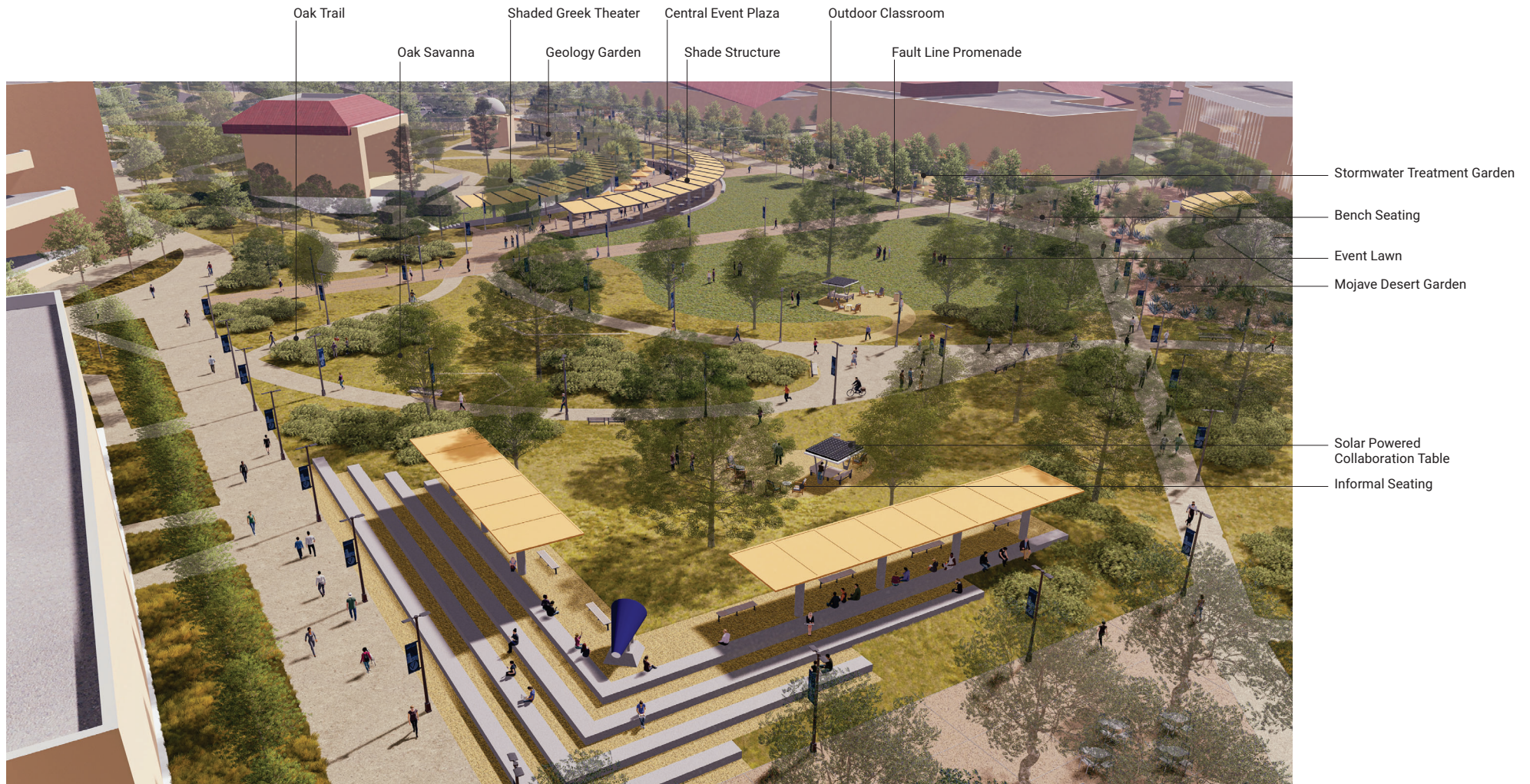


Informal Plaza Seating



Event Lawn





## View to southwest of Central Event Plaza and Event Lawn

The core of the campus, the sequence of gathering and event spaces shown in this view accommodate the full range of campus activities. The existing Arts Plaza and seating stairs are more inviting with a new shade structure. New pedestrian paths and seating and gathering spaces wind through existing Oak and Sycamore creating shady spots to relax, collaborate and people watch. The “right-sized” event lawn is large enough to accommodate occasional tented activities as well as informal recreational activities. The Greek Amphitheater beyond features a new shade structure to provide comfortable seating opportunities for events or outdoor classes.

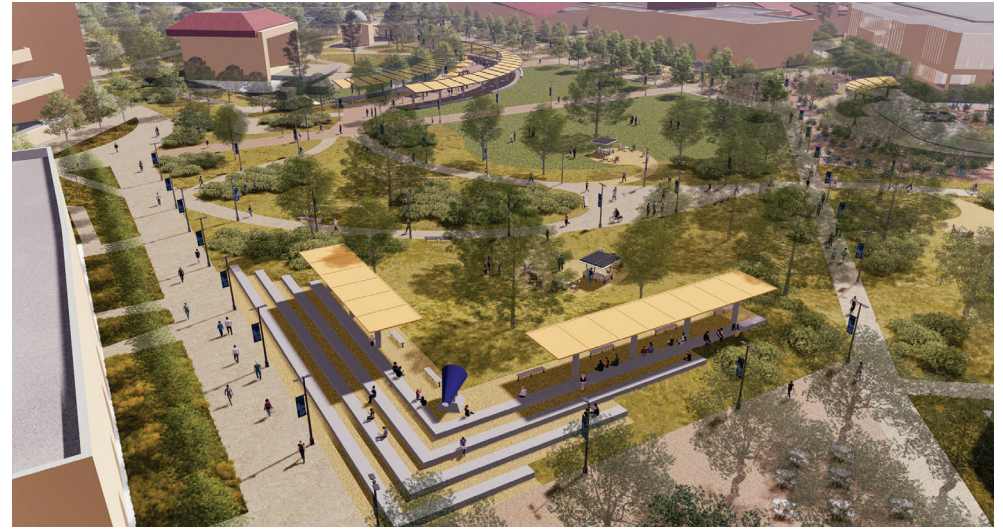




## Central Event Plaza / Event Lawn Comparison



Existing

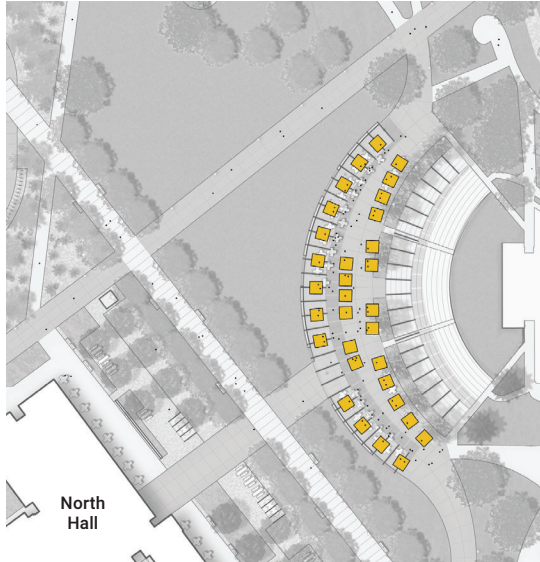


Proposed



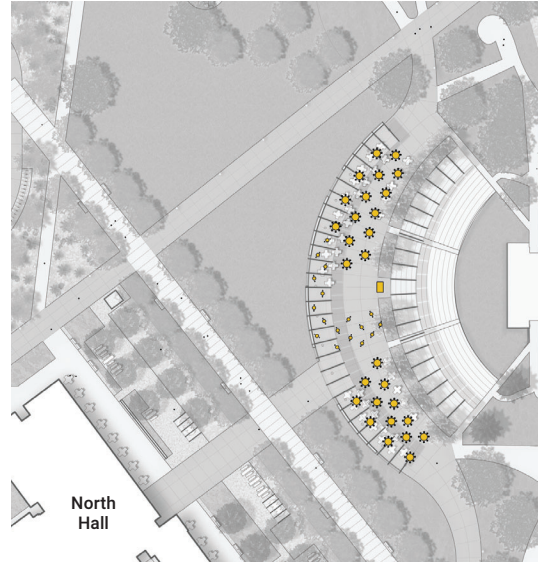


## Central Event Plaza / Event Lawn - Sample Layout Scenarios



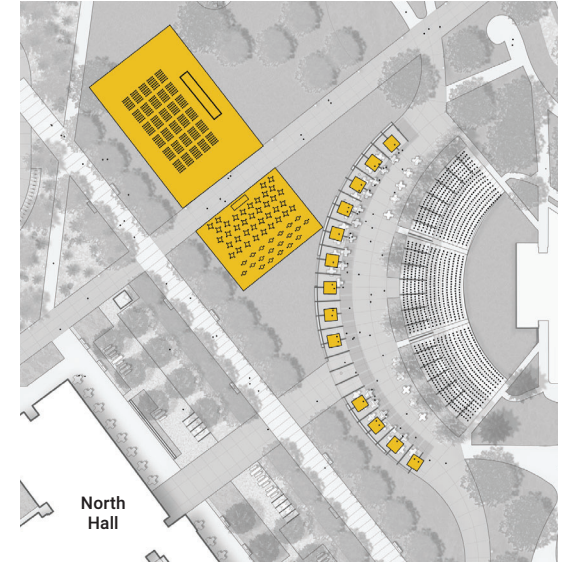
**Scenario 1: Campus or Community Fair**

- 16,268sf plaza
- 5,720sf plaza shade structure
- (32+) 10'x10' booths



**Scenario 2: 250 Person Catered Event**

- (25+) 10 person tables
- (17+) cocktail tables
- 200sf stage, podium or speaker space
- 250 seated guests



**Scenario 3: Large Events**

- 7200sf/500 person tent
- 4000sf/200 person tent
- 4,700sf amphitheater shade structure
- 1000 person amphitheater seating
- (20) 10'x10' booths



*Career Fair*



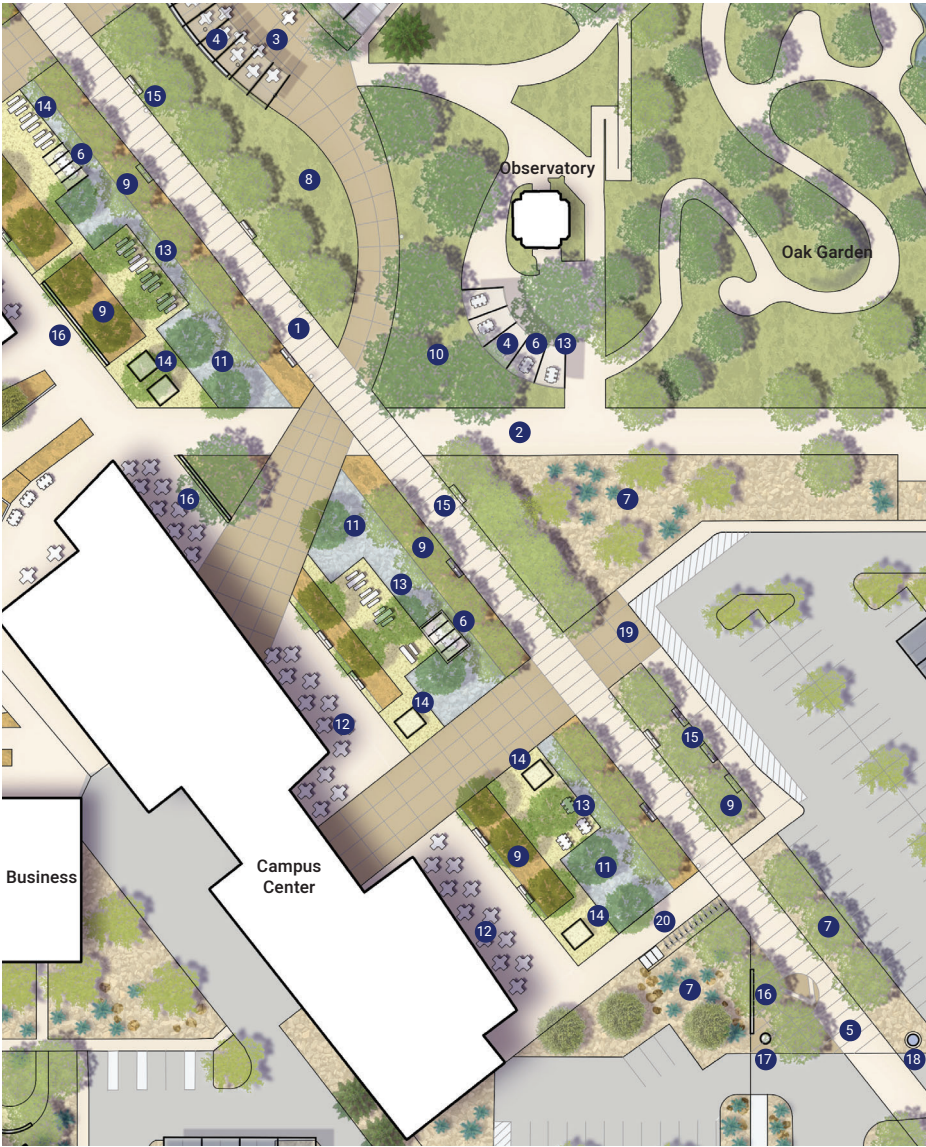
*Awards Ceremony*



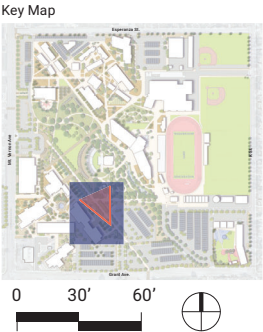
*Tented Event*



# Outdoor Classrooms / Stormwater Treatment Garden



- Features
- 1 Fault Line Promenade
  - 2 Richardson Walk
  - 3 Central Event Plaza
  - 4 Shade Structure
  - 5 Arrival Plaza
  - 6 Outdoor Classroom
  - 7 Desert Planting
  - 8 Oak Savanna
  - 9 Waterwise Planting
  - 10 Geology Garden
  - 11 Stormwater Garden
  - 12 Outdoor Cafe
  - 13 Collaboration Space
  - 14 Solar Powered Collaboration Table
  - 15 Bench Seating
  - 16 Seatwall
  - 17 Directory Kiosk
  - 18 SBVC Monument
  - 19 Drop-off
  - 20 E-Bike Charging & Bike Corral



Outdoor Classroom



Shaded Study Area



Outdoor Cafe Seating





\*Some trees were omitted to visualize the proposed improvements.

## View to north of Outdoor Classrooms and Stormwater Treatment Garden

The importance of Fault Line Promenade as a circulation connector and formal campus organizing element—indicating the presence and orientation of the fault lines running through the campus—is further amplified by locating major community gathering spaces parallel and adjacent to the Campus Center and North Hall. A series of open air outdoor classrooms include amenities to support learning including power for laptops and other audio-visual tools, collaboration tables and integrated white boards. Other flexible seating includes a combination of fixed elements like benches and tables as well as some movable furnishings that can be secured at the end of the day. A linear stormwater treatment garden is located between Promenade and seating areas, achieving sustainability goals and providing opportunity for interpretation and learning.





Outdoor Classrooms / Stormwater Treatment Garden Comparison



Existing

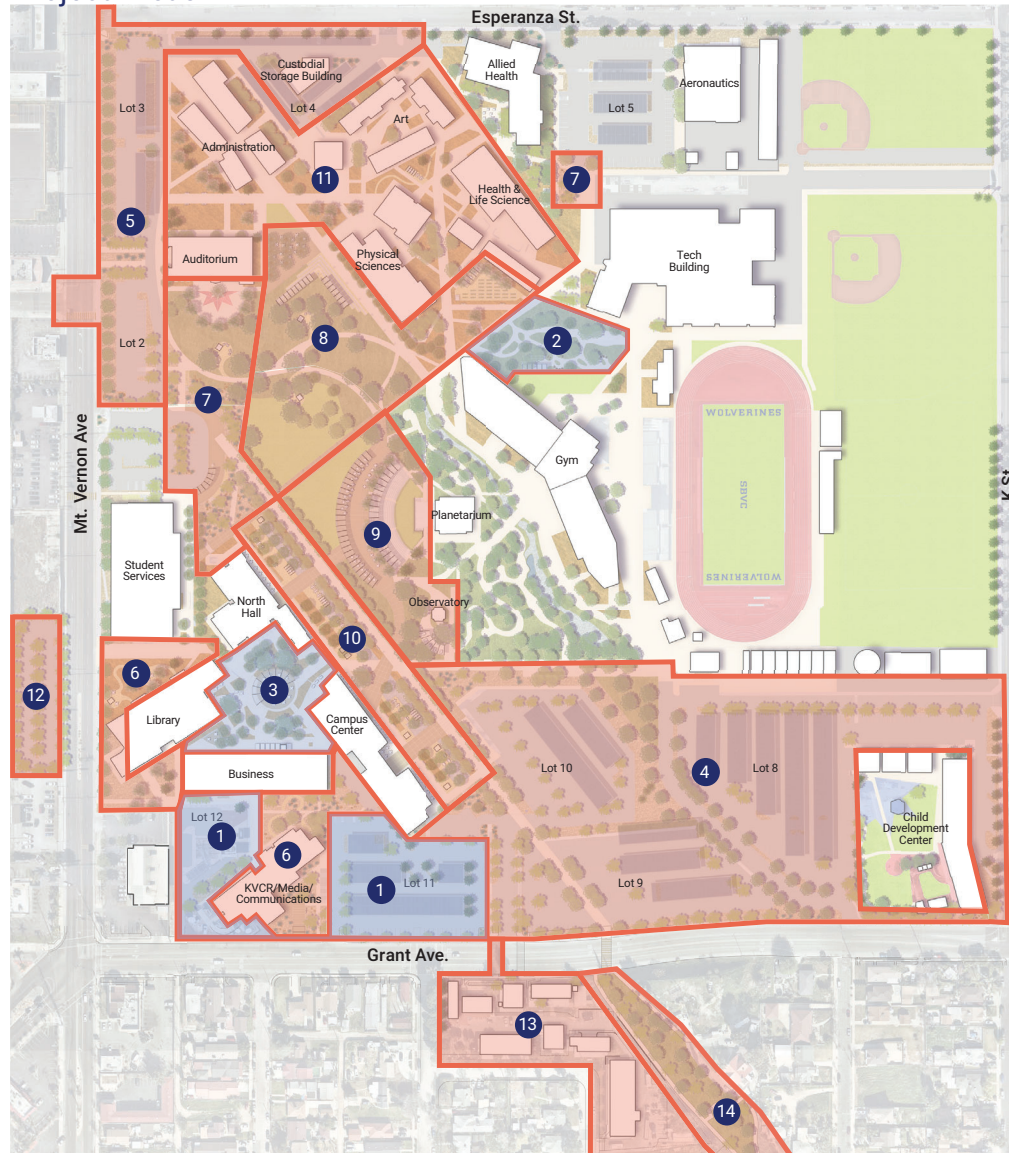


Proposed

\*Some trees were omitted to visualize the proposed improvements.



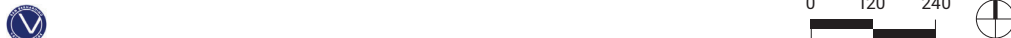
## Project Areas



- 1 Lot 11 and 12 (Phase 1) Estimate: \$59,000**  
Located adjacent to high use and high-profile entries and buildings, these parking lots are enhanced with native planting for screening and shading. Lot 12 will also receive solar panel shade structures as part of SBVC's sustainability initiative.
- 2 Bio Garden (Phase 1) Estimate: \$1,501,299**  
Building on the success of the existing Bio Garden, expanded spaces include more interpretive gardens and an open air pavilion equipped for use as an outdoor lab and classroom.
- 3 Business Quad (Phase 1) Estimate: \$2,969,195**  
Designed and in the process of implementation, the reimagined Business Quad includes additional shade and seating areas and locally adapted xeric planting, creating an inviting space for relaxation, dining and collaboration.
- 4 South and East Frontage and Parking ROM Estimate: \$2,617,581**  
Define a continuous sense of campus identity on SBVC's east side and south parking lot by implementing a cohesive strategy to address ground plane planting areas. Define a strong sense of arrival at SBVC's southern end and mitigate heat island effect by shading existing parking and sidewalks with new canopy trees. Provide expanded paving at bus and vehicular drop off and arrival zones with wayfinding signage, bicycle parking facilities, shaded seating and information kiosks.
- 5 Northwest Street Frontages ROM Estimate: \$1,396,180**  
Define a unified frontage that projects a strong message about SBVC's commitment to sustainable practices and the campus' unique identity. Adopt a xeric approach to understory planting while preserving and supplementing existing mature trees. Celebrate regional identity by using locally sourced cobble mulch and native plant materials.
- 6 West Street Frontage ROM Estimate: \$1,271,510**  
Create a window into campus activities that reflects SBVC's identity and values. Create new accessible walkway from Mount Vernon Avenue to southwest corner of the campus. Define arrival points with demonstration gardens featuring groves of locally adapted low-water trees and understory plants; develop garden trails and informal seating areas.
- 7 Arrival Plaza/Auditorium Event Area ROM Estimate: \$2,761,901**  
Create a welcoming sense of arrival that reinforces SBVC's unique identity, welcomes and orients visitors, celebrates historic structures and spaces, showcases events and activities and frames views to the campus interior spaces and circulation.

- 8 North Open Space/Community Garden ROM Estimate: \$4,054,150**  
Rethink the campus' iconic central greensward to make a shaded, inviting collection of informal gathering spaces. Celebrate the regional context by framing iconic views through the campus to the mountains beyond as well as using native trees and understory. Create a strong pedestrian link to the east side of the campus.
- 9 Central Event Plaza ROM Estimate: \$4,714,498**  
Expand the plaza space adjacent to the exciting Greek Amphitheater to create a high-capacity flexible use space for a variety of campus events and celebrations. Iconic shade structure and large canopy trees frame views and provide cooling shade to plaza and amphitheater seating. Conveniently located next to the mow-able meadow, the space can accommodate a range of equipment configurations from large tents, to stages, tables and portable canopies.
- 10 Fault Line Promenade ROM Estimate: \$2,957,777**  
Reinforce the geometry of the existing Fault Line Promenade by creating a series of outdoor amenity spaces that align with and engage this major circulation spine. Further activate the east side of the existing dining and classroom buildings with outdoor classrooms and informal seating areas set among tree allees. Create a dense and lively community gathering space that supports the wide range of campus community activities from academic collaboration, to outdoor dining and informal gatherings.
- 11 Academic Courtyard Refresh ROM Estimate: \$1,740,335**  
Refresh existing drought tolerant planting at academic courtyards to provide new teaching and interpretive garden opportunities, simplify maintenance and create additional seating areas. Create new Entry mini- plaza at Lot 5.
- 12 West Parking Area ROM Estimate: \$1,079,896**  
Provide shade to mitigate heat island effect per Cal Green requirements. Provide accessible stalls and curb cuts as required. Provide safe and accessible pedestrian walkways to connect to existing signaled cross-walks.
- 13 Maintenance Yard**  
Provide shade to mitigate heat island effect per Cal Green requirements. Provide accessible stalls and curb cuts as required. Provide safe and accessible pedestrian walkways to connect to existing signaled cross-walks.
- 14 Greenbelt Connection to Student Housing ROM Estimate: TBD**  
Multi-modal trail to future student housing development.

**TOTAL: \$27,123,352**





Planting Framework



0 120' 240'



Graphic Legend

- Native Planting
- Desert Landscape
- Waterwise Planting
- Low Water Turf
- Stormwater Planting
- Oak
- Canopy Tree
- Accent Tree
- Sycamore

The diagrams below show areas of existing planting to be refreshed, areas of turf to be replaced with planting, proposed new trees and existing trees to remain in place.



Converted Planting Legend

- Turf Converted to Planting- 275,709 sf
- Refreshed Planting



Tree Legend

- 205 New Trees
- 623 Existing Trees



# Native Planting

Native planting extends from the existing Oak Garden across the proposed Oak Savannah, wrapping the campus core. The use of native plant palettes here helps emphasize SBVC’s unique sense of place, celebrates the beauty, fragrance, history and ethnobotanical value of indigenous plant materials while also reaping the benefits of their inherent drought tolerance, pest and disease resistance.



Total Area of Native Planting:  
104,654 sf / 2.4 ac

**Trees, such as:**

- Ceanothus ‘Ray Hartman’
- Cercis occidentalis, Western Redbud
- Heterolmeles arbutifolia, Toyon
- Platanus racemosa, Western Sycamore
- Quercus spp.
- Rhus laurina, Laurel Sumac
- Populus fremontii, Western Cottonwood
- Salix spp., Arroyo Willow
- Alnus rhombifolia, White Alder

**Shrubs, such as:**

- Arctostaphylos cercocarpus, Mountain Mahogany
- Artemesia californica, California Sagebrush
- Baccharis pilularis, Coyote Brush
- Carpenteria californica, Bush Anemone
- Ceanothus griseus var. horizontalis, Wild Lilac
- Encelia californica, California Brittlebrush
- Eriogonum fasciculatum, California Buckwheat
- Fremontodendron californicum, California Flannelbush
- Myrica californica, Pacific Wax Myrtle
- Prunus ilicifolia
- Rhamnus crocea, Spiny Redberry
- Rhus integrifolia, Lemonadeberry
- Ribes speciosum, Currant

**Grasses and Perennials, such as:**

- Achillea millefolium, Common Yarrow
- Achillea x ‘Moonshine’, Moonshine Yarrow
- Asclepias eriocarpa, Monarch Milkweed
- Corethrogyne filaginifolia, California Aster
- Dendromecon rigida, Island Bush Poppy
- Eriophyllum confertiflorum, Golden Yarrow
- Festuca californica, California Fescue
- Galvezia speciosa ‘Firecracker’, Snapdragon
- Leymus ‘Canyon Prince’, Canyon Prince Wild Rye
- Mimulus aurantiacus, Bush Monkey Flower
- Muhlenbergia rigens, Deer Grass
- Penstemon spectabilis, Showy Penstemon
- Salvia apiana, White Sage
- Salvia mellifera, Black Sage
- Salvia clevelandii, Cleveland Sage



Native Grasses and Decorative Rock



Demonstration Habitat Garden



Native Meadow





**Trees such as:**



*Ceanothus* 'Ray Hartman'



*Cercis occidentalis*



*Heterolmeles arbutifolia*



*Platanus racemosa*



*Quercus agrifolia*

**Shrubs such as:**



*Artemisia californica*



*Baccharis pilularis* 'Pigeon Point'



*Ceanothus griseus* var. *horizontalis*



*Myrica callifornica*



*Dendromecon rigida*

**Perennials and Grasses such as:**



*Eriogonum fasciculatum*



*Mimulus aurantiacus*



*Galvezia speciosa* 'Firecracker'



*Salvia clevelandii*



*Epilobium canum*





## Collaboration Table Low-High Recommendations



*Collaborative Table - Concrete*  
Low



*Concrete Table*  
Medium



*Collaborative Table - Wood and Steel*  
Medium



*Collaborative Table - Recycled Plastic*  
Medium



*Collaborative Table - Wood and Steel*  
High

## Technology Low-High Recommendations



*Charging Station*  
Low



*Solar Powered Bench with WiFi*  
Medium



*Solar Powered Bench with Charging Station*  
High



*Solar Powered Bench with Charging Station*  
High



*Solar Powered Tables with Charging Station*  
High





Fun Seating Low-High Recommendations



Recycled Plastic Adirondack Armchairs  
Low



Plastic Chaise Lounge  
Low



Hammock Loungers  
Low



Hanging Basket Chairs  
Low



Fixed Chaise Lounge  
Medium



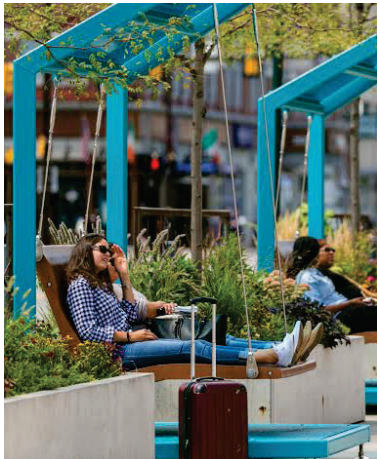
Recycled Plastic and Steel Lounger  
Medium



Wobble Seats  
Medium



Organic Shaped Concrete Seats  
Medium



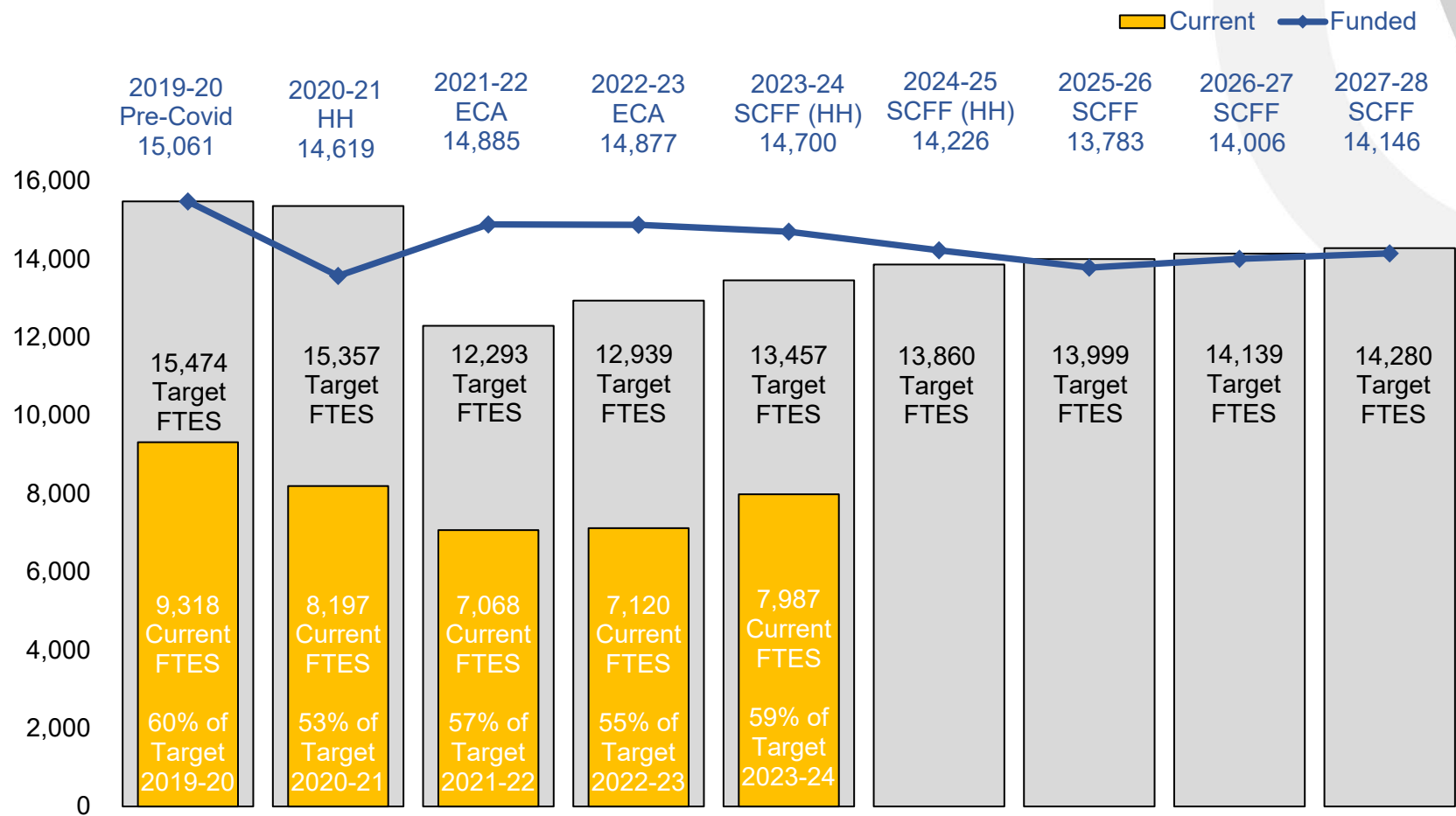
Wood and Steel Swing  
High



Seating Nook Canopy  
High



# Enrollment as of September 25, 2023



SAN BERNARDINO COMMUNITY COLLEGE DISTRICT  
**PARS Pension Rate Stabilization Trust Snapshot | August 31, 2023**

	Principal	Current Balance	Principal Excess/(Deficit)	Distributions	Expenses	Total Gains/(Losses) Net of Expenses
<b>General Fund</b>	46,000,000	46,353,021	353,021	10,250,000	496,289	10,106,732
<b>SBVC</b>	5,000,000	4,641,530	-358,470	1,535,000	46,347	1,130,183
<b>CHC</b>	2,700,000	2,853,608	153,608	130,000	19,695	263,912
<b>DSO</b>	3,000,000	2,873,811	-126,189	0	7,957	-134,145
<b>KVCR \$15M</b>	15,000,000	15,909,138	909,138	0	20,104	889,035
<b>KVCR</b>	21,000,000	21,396,248	396,248	4,200,000	201,941	4,394,307
<b>MAE</b>	7,040,000	7,209,341	169,341	895,946	56,823	1,008,464
<b>TOTAL</b>	99,740,000	101,236,697	1,496,697	17,010,946	849,155	17,658,489

**Account Notes**

- GF includes \$5 million contribution from General Fund invested prior to FCC Auction Proceeds as Board approved 11/10/2016. Principal investment has been adjusted to show \$3 million transfer from GF as DSO principal as Board approved 3/10/2022.
- SBVC, CHC, and DSO contain funds fully allocated to the various sites by the Board of Trustees on 4/26/2018.
- MAE refers to overarching Media Academy Endowment, which is comprised of SBVC's Institute of Media Arts and CHC's Digital Media program. Principal investment has been adjusted to show \$1,960 million transfer out and not distribution per Board 9/10/2020 approval.
- KVCR \$15 million State grant funds subject to Guiding Principles adopted 11/10/2022.



SAN BERNARDINO COMMUNITY COLLEGE DISTRICT  
PARS Post-Employment Benefits TrustAccount Report for the Period  
8/1/2023 to 8/31/2023Jose Torres  
Executive Vice Chancellor  
San Bernardino Community College District  
550 E. Hospitality Lane  
San Bernardino, CA 92408

## Account Summary

Source	Balance as of 8/1/2023	Contributions	Earnings	Expenses	Distributions	Transfers	Balance as of 8/31/2023
PENSION - GF	\$47,003,379.41	\$0.00	-\$641,542.65	\$8,816.03	\$0.00	\$0.00	\$46,353,020.73
KVCR \$15 Million State	\$16,132,352.12	\$0.00	-\$220,188.25	\$3,025.81	\$0.00	\$0.00	\$15,909,138.06
PENSION - SBVC	\$4,706,653.43	\$0.00	-\$64,240.46	\$882.79	\$0.00	\$0.00	\$4,641,530.18
PENSION - KVCR	\$21,696,449.72	\$0.00	-\$296,131.85	\$4,069.42	\$0.00	\$0.00	\$21,396,248.45
PENSION - MAE	\$7,310,491.90	\$0.00	-\$99,779.90	\$1,371.17	\$0.00	\$0.00	\$7,209,340.83
PENSION - CHC	\$2,893,645.42	\$0.00	-\$39,494.97	\$542.73	\$0.00	\$0.00	\$2,853,607.72
PENSION-DSO	\$2,914,132.50	\$0.00	-\$39,774.59	\$546.57	\$0.00	\$0.00	\$2,873,811.34
<b>Totals</b>	<b>\$102,657,104.50</b>	<b>\$0.00</b>	<b>-\$1,401,152.67</b>	<b>\$19,254.52</b>	<b>\$0.00</b>	<b>\$0.00</b>	<b>\$101,236,697.31</b>

## Investment Selection

Source	
PENSION	Vanguard Conservative Strategy

## Investment Objective

Source	
PENSION	The Conservative Portfolio invests in Vanguard mutual funds using an asset allocation strategy designed for investors seeking both current income and low to moderate capital appreciation.

## Investment Return

Source	1-Month	3-Months	1-Year	Annualized Return			Plan's Inception Date
				3-Years	5-Years	10-Years	
PENSION - GF	-1.36%	2.36%	5.00%	0.80%	3.80%	-	6/22/2018
KVCR \$15 Million State	-1.36%	2.36%	-	-	-	-	12/20/2022
PENSION - SBVC	-1.36%	2.36%	5.00%	0.80%	3.80%	-	6/22/2018
PENSION - KVCR	-1.36%	2.36%	5.03%	0.80%	3.80%	-	6/22/2018
PENSION - MAE	-1.36%	2.36%	5.00%	0.79%	-	-	9/23/2019
PENSION - CHC	-1.36%	2.36%	5.00%	0.80%	-	-	11/1/2019
PENSION-DSO	-1.36%	2.36%	5.00%	-	-	-	3/16/2022

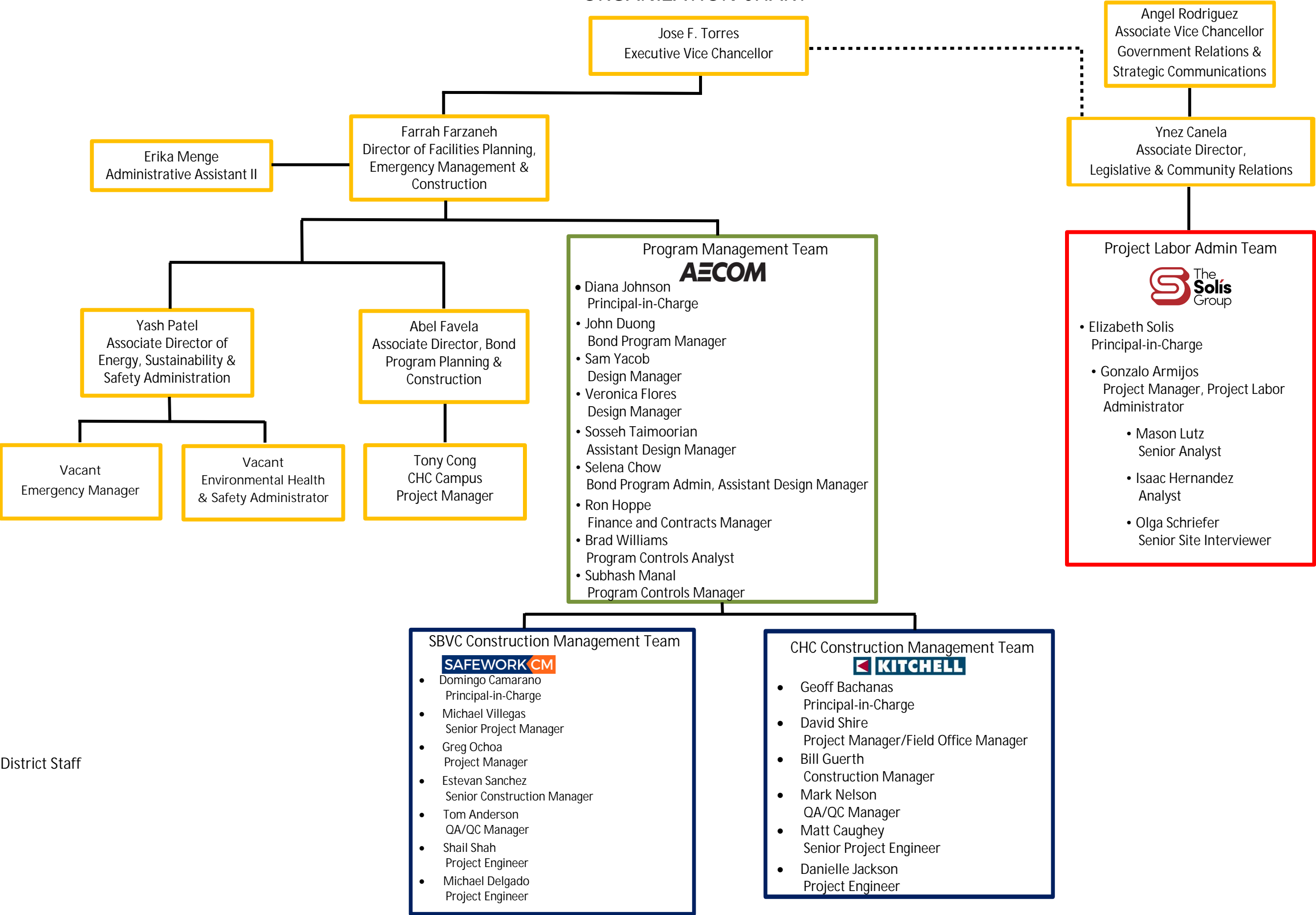
Information as provided by US Bank, Trustee for PARS; Not FDIC Insured; No Bank Guarantee; May Lose Value

Past performance does not guarantee future results. Performance returns may not reflect the deduction of applicable fees, which could reduce returns. Information is deemed reliable but may be subject to change.  
Investment Return: Annualized rate of return is the return on an investment over a period other than one year multiplied or divided to give a comparable one-year return.  
Account balances are inclusive of Trust Administration, Trustee and Investment Management fees





ORGANIZATION CHART



— District Staff



## MEASURE CC

BUILDING NEW OPPORTUNITIES FOR  
OUR STUDENTS & OUR COMMUNITY

### PROJECT TIMELINE

June 2023 - August 2023	Completion Date	September 2023 - November 2023	Completion Date
✓ Award SBVC CWI Perimeter Fencing, Inspector of Record	7/3/2023	✓ Award CHC CWI Replacement of Existing Cooling Towers, Inspector of Record	9/6/2023
✓ Award CHC CWI Replacement of Existing Cooling Towers, Special Inspections & Material Testing Services	8/22/2023	Award SBVC CWI Biology Garden Expansion, Inspector of Record	Sep 2023
		Award CHC Central Complex 2 Renovation, Inspector of Record	Oct 2023
		Award CHC Central Complex 2 Renovation, Special Inspections & Material Testing Services	Oct 2023
		Award CHC Crafton Hall Renovation, Inspector of Record	Oct 2023
		Award CHC Crafton Hall Renovation, Special Inspections & Material Testing Services	Oct 2023
		Award CHC CWI Campus Accessibility & Site Improvements - Phase 2, General Contractor	Oct 2023
		Award CHC CWI Campus Accessibility & Site Improvements - Phase 2, Inspector of Record	Oct 2023
		Award CHC CWI Campus Accessibility & Site Improvements - Phase 2, Special Inspections & Material Testing Services	Oct 2023
		Award SBVC CWI Biology Garden Expansion, Special Inspections & Material Testing Services	Oct 2023
		Award SBVC CWI Biology Garden Expansion, General Contractor	Oct 2023

9/25/2023

## **SAN BERNARDINO COMMUNITY COLLEGE DISTRICT**

**TO:** Board of Trustees

**FROM:** Diana Z. Rodriguez, Chancellor

**REVIEWED BY:** Jose F. Torres, Executive Vice Chancellor

**PREPARED BY:** Lawrence P. Strong, Director of Fiscal Services

**DATE:** October 19, 2023

**SUBJECT:** Budget Revenue & Expenditure Summary

### **RECOMMENDATION**

This item is for information only and no action is required.

### **OVERVIEW**

While year-to-date revenue and/or expenditure percentages often vary from the percentage of fiscal year elapsed, all funds are expected to remain within the 2023-24 budget unless otherwise noted here. For explanations of any significant variances in year-to-date revenues/expenditures from fiscal year elapsed, please see the attached summary.

### **ANALYSIS**

The attached Revenue and Expenditure Summary reflects activity for the 2023-24 fiscal year through September 27, 2023. As of that date, SBCCD was 24.4% through the fiscal year and had spent and/or encumbered approximately 23.5% of its unrestricted general fund budget.

### **SBCCD GOALS**

4. Ensure Fiscal Accountability/Sustainability

### **FINANCIAL IMPLICATIONS**

This analysis is an important tool for the Board of Trustees to track SBCCD revenue and expenditures across all funds.







## Budget Revenue & Expenditure Summary

Year to Date 9/27/23

[v.9.27.2023.p.1|2]

### 24.4% of Fiscal Year Elapsed

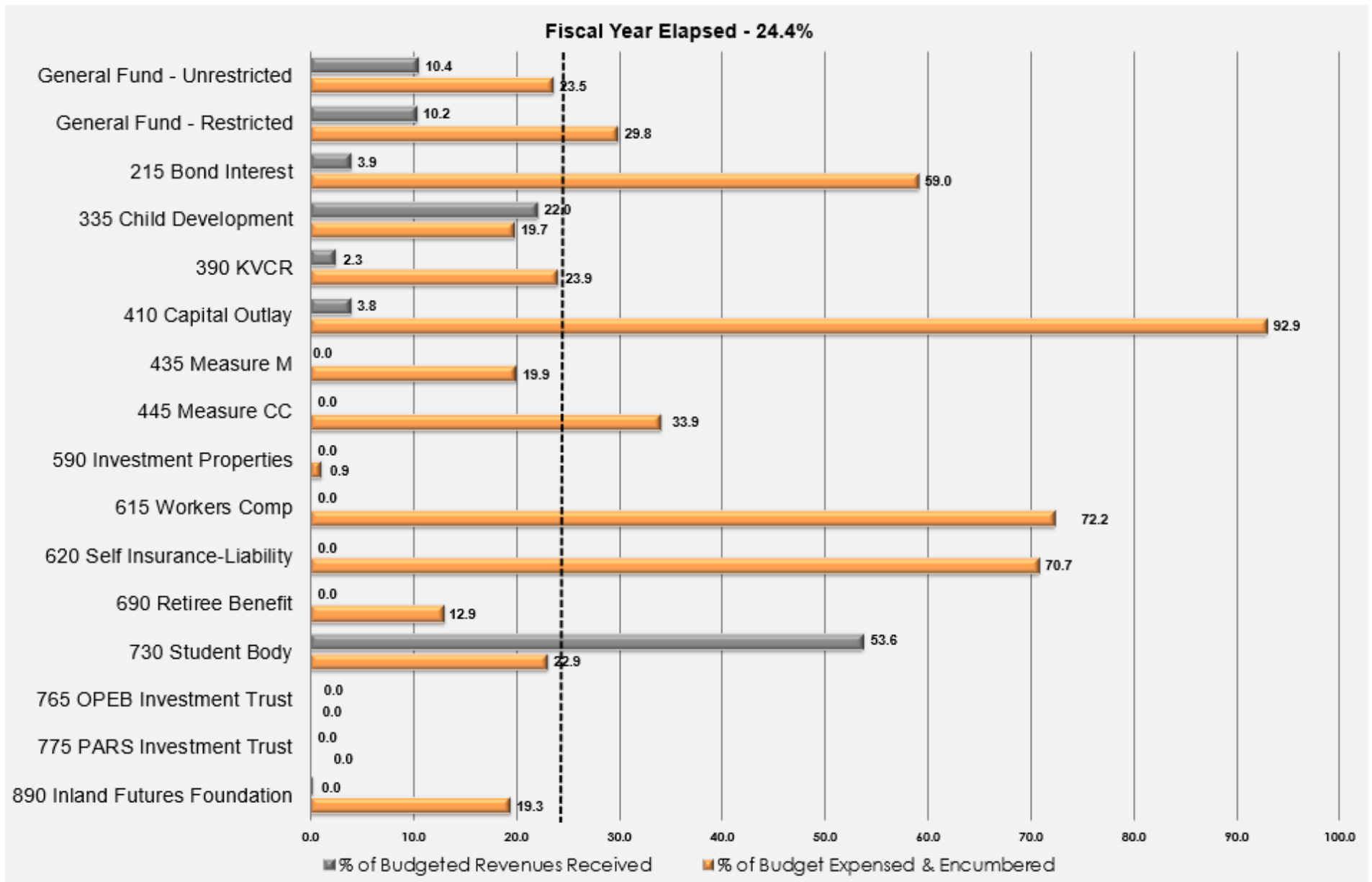
FUND	REVENUES			EXPENDITURES			COMMENTS
	Budget	Received YTD		Budget	Expensed/ Encumbered YTD		
110 General Fund - Unrestricted	138,840,821	14,485,714	10.4%	139,224,469	32,735,895	23.5%	Expenditures are consistent with the needs of the fund given the current climate.
125 General Fund - Restricted	111,369,336	11,392,023	10.2%	111,369,337	33,212,356	29.8%	Most grant revenues are on a reimbursement basis.
215 Bond Interest & Redemption	58,000,000	2,234,548	3.9%	58,000,000	34,213,265	59.0%	Taxes are determined and collected by the County for bond measures.
335 Child Development	5,065,998	1,115,343	22.0%	5,065,997	1,000,155	19.7%	
390 KVCR	8,638,449	202,810	2.3%	8,638,449	2,065,470	23.9%	Most grant revenues are on a reimbursement basis.
410 Capital Outlay	13,437,251	513,087	3.8%	14,615,412	13,574,850	92.9%	Purchase order covering expenses for the entire fiscal year are created early in the year.
435 Measure M	450,000	-	0.0%	19,714,856	3,926,455	19.9%	Investment activity is posted on a quarterly basis. Q1 activity will be posted in October.
445 Measure CC	4,500,000	-	0.0%	309,895,696	105,207,144	33.9%	Purchase order covering expenses for the entire fiscal year are created early in the year.
590 Investment Properties	3,844,231	-	0.0%	3,032,857	28,119	0.9%	Revenue and expenditure activity posted in arrears. Posting in progress for July activity.
615 Workers Compensation	2,444,920	-	0.0%	2,870,000	2,073,423	72.2%	Revenue activity posted in arrears. Purchase order covering expenses for the entire fiscal year are created early in the year.
620 Self Insurance-Liability	1,250,000	1,199,999	96.0%	1,250,000	883,953	70.7%	Revenue is transferred in full at the beginning of the year. Insurance Premiums paid at the beginning of the year for the entire fiscal year.
690 Retiree Benefit	387,700	-	0.0%	387,700	49,899	12.9%	Revenues are posted in arrears.
730 Student Body Center Fee	252,785	135,438	53.6%	252,785	57,970	22.9%	A significant amount of revenues received during Summer and Fall 2023 registration.
765 OPEB Trust	1,000,000	-	0.0%	82,000	-	0.0%	Investment activity is posted on a quarterly basis. Q1 activity will be posted in October.
775 PARS Trust	5,050,000	-	0.0%	3,100,000	-	0.0%	Investment activity is posted on a quarterly basis. Q1 activity will be posted in October.
890 Inland Futures Foundation	1,395,791	516	0.0%	1,395,791	269,647	19.3%	Revenues are posted in arrears.
<b>Total (All Funds)</b>	<b>355,927,282</b>	<b>31,279,478</b>	<b>8.8%</b>	<b>678,895,349</b>	<b>229,298,601</b>	<b>33.8%</b>	



## Budget Revenue & Expenditure Summary

Year to Date 9/27/23

[v.9.27.2023.p.2|2]





# SAN BERNARDINO COMMUNITY COLLEGE DISTRICT

## Program Summary: Board of Trustees - As of 09/26/23

Percentage of Year Expired: 24.1%

②

①

① ÷ 2

Object #	Description	2024 Budget	2024 Actuals YTD 09/26/23	Encumb.	Total 2024 Actuals + Encumb.	% of Budget Used	Notes
200000	Board Of Trustees Stipends	36,000	7,056	-	7,056	20%	
	<b>Total 2000's Classified Salaries</b>	<b>36,000</b>	<b>7,056</b>	<b>-</b>	<b>7,056</b>	<b>20%</b>	
300000	Employee Benefits	128,121	21,177	-	21,177	17%	
	<b>Total 3000's Employee Benefits</b>	<b>128,121</b>	<b>21,177</b>	<b>-</b>	<b>21,177</b>	<b>17%</b>	
450000	Noninstructional Supplies	2,000	-	1,000	1,000	50%	
456000	Commencement Supplies	1,200	-	-	-	0%	
475000	Meals & Refreshments	13,000	-	10,000	10,000	77%	
	<b>Total 4000's Supplies &amp; Materials</b>	<b>16,200</b>	<b>-</b>	<b>11,000</b>	<b>11,000</b>	<b>68%</b>	
511300	Consultant & Other Services	15,000	2,100	-	2,100	14%	Retreats, training facilitator
520000	Travel & Conference Expenses	45,000	-	42,808	42,808	95%	
531000	Dues And Membership	12,000	-	7,898	7,898	66%	ACCT, CCLC, CALCCTA
554000	Telephone	1,000	-	804	804	80%	
561000	Rentals	1,000	-	-	-	0%	
581800	Student Travel	2,500	678	1,322	2,000	80%	Student trustee conference attendance
	<b>Total 5000's Other Expenses</b>	<b>76,500</b>	<b>2,778</b>	<b>52,832</b>	<b>55,610</b>	<b>73%</b>	
	<b>Total Expenditures:</b>	<b>256,821</b>	<b>31,011</b>	<b>63,832</b>	<b>94,843</b>	<b>37%</b>	



## Board Finance Committee Planning Calendar

October 4, 2023

**THU, OCT 4, 2023**

**@SBCCD Boardroom Extension**

- Bond Measures M and CC Issuances
- SBVC Landscape Comprehensive Plan
- Guiding Principles | KVCRC \$15 Million
- Monthly Updates

**THU, NOV 9, 2023**

**@SBCCD Boardroom Extension**

- Budget Calendar for 2024-25
- Investment Properties | Occupancy & Fiscal Performance
- BFC Quarterly Activity
- Monthly Updates

**FRI, DEC 8, 2023**

**@SBCCD Boardroom Extension**

- Tour of Commercial Buildings (*tentative*)
- BOT Directives for 2024-25 Budget
- Annual Audit Reports
- Monthly Updates

**THU, JAN 11, 2024**

**@SBCCD Boardroom Extension**

- Review of BFC Charge
- Guiding Principles | FCC Auction Proceeds
- BLC Legislative and Budget Priorities
- Monthly Updates

**THU, FEB 8, 2024**

**@SBCCD Boardroom Extension**

- Semi-Annual Bond Construction Update
- Investment Properties | Occupancy & Fiscal Performance
- BFC Quarterly Activity
- Monthly Updates

**THU, MAR 14, 2024**

**@SBVC Location TBD**

- Bond Measure Work Force Report
- Monthly Updates

**THU, APR 11, 2024**

**@CHCLearning Resource Center, LRC 226**

- Monthly Updates

**THU, MAY 9, 2024**

**@SBCCD Boardroom Extension**

- Investment Properties | Occupancy & Fiscal Performance
- BFC Quarterly Activity
- Monthly Updates

**THU, JUN 13, 2024**

**@SBCCD Boardroom Extension**

- PARS Pension Rates Stabilization Trust Review
- Bond Measure Work Force Report
- Monthly Updates

**THU, JUL 11, 2024**

**@SBCCD Boardroom Extension**

- Monthly Updates

**THU, AUG 8, 2024**

**@SBCCD Boardroom Extension**

- Semi-Annual Bond Construction Update
- Investment Properties | Occupancy & Fiscal Performance
- BFC Quarterly Activity Report
- Monthly Updates

**THU, SEP 11, 2024**

**@SBCCD Boardroom Extension**

- Bond Measure Work Force Report
- Monthly Updates

MONTHLY  
UPDATES  
(as necessary)

- State Budget
- Enrollment
- PARS Investment

- Budget Revenue & Expenditures
- Bond Construction Timeline & Org Chart

- BOT Budget to Actual
- BFC Planning Calendar