



San Bernardino
Valley College

San Bernardino Valley College

Space Utilization



March 2016

INTRODUCTION

This Space Utilization is an analysis of instructional room usage at San Bernardino Valley College (SBVC) during the fall 2014 semester. Space Utilization examines the number of hours per week each room is scheduled for instructional use during a semester. Title V policy on utilization and space standards are used to determine efficiency of room utilization. The analysis compares the amount of time a room is *actually* utilized to the amount of time it *should* minimally be utilized to be deemed efficient usage. Additionally, Weekly Student Contact Hour (WSCH) generation by hours per week of space utilization during the semester for each subject was analyzed to evaluate efficiency. The analysis also reviews WSCH generation with assignable square footage (ASF) usage and Title V recommendations for WSCH production via lecture and lab space.

The purpose of this Space Utilization analysis is to provide data regarding WSCH generation with the amount of instructional space utilized on campus. The analysis will review efficiencies in room usage as well as efficiencies of WSCH generation per the amount of space utilized.

METHODOLOGY

Title V policy on utilization standards are determined on the basis of a 70-hour per week maximum room availability (Monday-Friday from 8:00 am to 10:00 pm). Per Title V standards, this analysis maintains that classrooms shall be utilized no less than 53-hours per week to achieve minimum qualifications for efficient room usage. Similarly, laboratories shall be utilized no less than 27.5-hours per week to achieve minimum qualifications for efficient room usage. Percentage of room utilization is calculated based on actual contact hours within each room versus the Title V standard for achieving minimum qualifications for efficient room usage. For example, a classroom with 53 actual contact hours during the semester would achieve 100% utilization. WSCH Capacity may be defined as the amount of WSCH a room has the capacity to generate based on its size and type. Title V standards were also used to determine WSCH Capacity for classrooms and laboratories and may be compared to a rooms actual WSCH generation.

Fall 2014 term data for instructional offerings at SBVC was provided by the San Bernardino Community College District (SBCCD) Office of Institutional Effectiveness, Research and Planning. This was the most current fall term for which data was available during time of collection. The data provided information on each course section offering by room location, contact day(s) and time(s), instructional method, and WSCH generation. WSCH generation was calculated for each course offering within a room. If a course section utilized multiple rooms during a semester for various instruction methods, then WSCH generation was estimated based on each rooms contact hours. If a course section utilized an Arranged (ARR) hour contact method it was included with the space utilization only if the section generated WSCH and used a lecture or lab instructional methods. Course sections that utilized an ARR contact method for Independent Study or Work Experience credit were not included in room utilization hours. If a course section met in a room for less than 17-days in a semester the contact hours were not included in room utilization hours. Contact hours for intercollegiate sports course sections were not included in room utilization hours.

WSCH generation by subject was compared with the hours per week of space utilization to measure a level of efficiency. This metric evaluates WSCH production with the amount of total instructional hours spent in spaces on campus. High WSCH/Hourly utilization would imply that a subject is producing an above average level of WSCH for the amount of time it is utilizing instructional space on campus. High WSCH/Hourly utilization may also imply high a high fill rate for a particular subject per the amount of section offerings.

WSCH generation by subject and the amount of ASF usage by that subject on campus was also compared with Title V standards for space needs. This metric evaluates the *actual* amount of ASF utilized on campus to generate WSCH for each subject by the amount of ASF that subject *should* have needed per Title V standards to generate the same amount of WSCH. Space need or surplus is determined by subtracting the amount of ASF Title V standards determine to be sufficient for each subjects' WSCH generation by the amount of ASF actually utilized on campus by each subject. Additionally, the amount of ASF required for each subjects' WSCH generation per Title V standards (WSCH/Title V recommended ASF) was compared to the actual ASF utilized by each subject (WSCH/actual ASF utilized) to determine a gap or surplus in the amount of ASF used to the amount needed to generate the same amount of WSCH.

SBVC - FALL 2014 SPACE UTILIZATION: BUILDING SUMMARY

Building	Room Count				Classrooms Avg. Utilization		Laboratory Avg. Utilization		Overall Avg. Utilization
	Classrooms	Laboratory	Other Instructional	Total Instructional	Hours/Wk.	% to Standard (53 hrs/wk)	Hours/Wk.	% to Standard (27.5 hrs/wk)	
Administration Student Services (AD)	0	0	1	1	N/A	N/A	N/A	N/A	N/A
Art Center & Gallery (ART)	1	5	0	6	22.65	43%	21.17	77%	60%
Auditorium (AUD)	1	0	1	2	8.66	16%	N/A	N/A	16%
Business Education (B)	20	6	0	26	30.52	58%	22.10	80%	69%
Campus Center (CC)	0	0	1	1	N/A	N/A	N/A	N/A	N/A
Health & Life Science (HLS)	14	10	0	24	33.96	64%	21.83	79%	72%
Liberal Arts (LA)	6	2	1	9	26.26	50%	28.99	105%	77%
Library (LIB)	0	0	1	1	N/A	N/A	N/A	N/A	N/A
Media / Communications (MC)	1	1	0	2	17.30	33%	22.06	80%	56%
North Hall (NH)	19	3	4	26	35.96	68%	18.32	67%	67%
Planetarium (PL)	0	1	0	1	N/A	N/A	2.83	10%	10%
Physical Sciences (PS)	8	11	2	21	31.04	59%	26.90	98%	78%
Snyder Gym (SG)	0	0	3	3	N/A	N/A	N/A	N/A	N/A
Technical (T)	8	15	1	24	19.89	38%	16.98	62%	50%
Transportation (TRAN)	2	1	0	3	15.70	30%	20.99	76%	53%
Women's Gym (WG)	0	0	4	4	N/A	N/A	N/A	N/A	N/A

OVERALL AVG. UTILIZATION	
High Utilization = 70% or Higher	
Medium Utilization = 50% - 69%	
Low Utilization = Below 50%	

TITLE V STANDARDS

Instructional space utilization is based on a maximum 70-hours per week (M-F 8:00am - 10:00pm)
Classroom utilization standard for a College generating 140,000 WSCH or more should be at least 53-hours per week
Lab utilization standard for a College generating 140,000 WSCH or more should be at least 27.5-hours per week

SBVC - FALL 2014 SPACE UTILIZATION: BY ROOM									HOURS PER WEEK		Min. Classroom Utilization Standard (53 Hrs/Wk)																																
									2	4	6	8	10	12	14	16	18	20	22	24	26	28	30	32	34	36	38	40	42	44	46	48	50	52	54	56	58	60	62	64	66	68	70
ADMINISTRATION STUDENT SERVICES BLDG. (AD)																																											
Room	Room Use	ASF	Stns.	WSCH Cap.	Course	Inst. Mthd.	WSCH	Hrs/Wk																																			
AD-105	Office	223	1	519.81																																							
					2 sections meeting 1 hr/wk each ARR	SDEV-900	LEC	12.23																																			
					1 section meeting 3 hrs/wk ARR	SDEV-905	LAB	36.00																																			
						SDEV-906	LAB	60.00																																			
					TOTAL		108.23	25.00																																			
ART CENTER & GALLERY (ART)																																											
Room	Room Use	ASF	Stns.	WSCH Cap.	Course	Inst. Mthd.	WSCH	Hrs/Wk																																			
ART-107	Lab	1,764	30	686.38																																							
					ART-120	LEC/LAB	325.67																																				
					ART-124A	LEC/LAB	565.56																																				
					ART-124B	LEC/LAB	85.07																																				
					ART-124C	LEC/LAB	0.00																																				
					TOTAL		976.30	28.46																																			
ART-114	Lab	1,776	30	691.05																																							
					ART-126A	LEC/LAB	350.00																																				
					ART-126B	LEC/LAB	105.00																																				
					ART-132A	LEC/LAB	90.39																																				
					ART-132B	LEC/LAB	30.13																																				
					ART-132C	LEC/LAB	0.00																																				
					TOTAL		575.52	18.64																																			
ART-120	Lab	1,235	21	480.54																																							
					ART-175A	LEC/LAB	226.57																																				
					ART-175B	LEC/LAB	45.00																																				
					ART-270A	LEC/LAB	65.00																																				
					ART-270B	LEC/LAB	30.00																																				
					TOTAL		366.57	12.32																																			
ART-126	Lab	1,270	21	494.16																																							
					ART-212A	LEC/LAB	245.00																																				
					ART-212B	LEC/LAB	160.00																																				
					ART-240A	LEC/LAB	88.25																																				
					ART-240B	LEC/LAB	44.13																																				
					TOTAL		537.38	16.31																																			
ART-137	Lab	1,120	36	435.80																																							
					ART-145	LEC/LAB	160.00																																				
					ART-148	LEC/LAB	235.00																																				
					ART-149	LEC/LAB	35.00																																				
					ART-161	LEC/LAB	475.00																																				
					ART-180	LEC/LAB	100.00																																				
					TOTAL		1,005.00	30.12																																			
ART-144	Classroom	1,590	103	3,706.29																																							
					ART-100	LEC	503.31																																				
					ART-102	LEC	82.86																																				
					ART-102H	LEC	47.54																																				
					ART-103	LEC	114.00																																				
					ART-105	LEC	111.00																																				
					ART-108	LEC	111.00																																				
					TOTAL		969.71	22.65																																			

TITLE V STANDARDS

Instructional space utilization is based on a maximum 70-hours per week (M-F 8:00am - 10:00pm)
 Classroom utilization standard for a College generating 140,000 WSCH or more should be at least 53-hours per week
 Lab utilization standard for a College generating 140,000 WSCH or more should be at least 27.5-hours per week

SBVC - FALL 2014 SPACE UTILIZATION: BY ROOM									HOURS PER WEEK										Min. Classroom Utilization Standard (53 Hrs/Wk)																								
									2	4	6	8	10	12	14	16	18	20	22	24	26	28	30	32	34	36	38	40	42	44	46	48	50	52	54	56	58	60	62	64	66	68	70
AUDITORIUM (AUD)																																											
Note: Room schedule within Auditorium in Fall 2014 used old room numbering system. Room usage verified with Dr. Kay Weiss for space utilization																																											
Room	Room Use	ASF	Stns.	WSCH Cap.	Course	Inst. Mthd.	WSCH	Hrs/Wk																																			
AUD-2/3/4 (AUD-13)	Classroom	767	40	1,787.88	THART-100	LEC	111.00																																				
					THART-147	LEC	69.00																																				
					THART-160X4	LEC/LAB	119.00																																				
					DANCE-200	LEC	45.00																																				
					TOTAL		344.00	8.66																																			
									Includes lab WSCH Scene Shop																																		
									THART (6.16) DANCE 16% (2.50)																																		
AUD-AUD (AUD-104)	Assembly Service	2,366	649	920.62	THART-114X4	LAB	216.60																																				
					TOTAL		216.60	13.00																																			
BUSINESS EDUCATION (B)																																											
Room	Room Use	ASF	Stns.	WSCH Cap.	Course	Inst. Mthd.	WSCH	Hrs/Wk																																			
B-118	Lab	1,017	35	794.53	CIT-010	LEC/LAB/DE	367.70																																				
					CIT-101	LEC	354.00																																				
					CIT-215	LEC	42.00																																				
					CS-170	LEC/LAB/DE	138.00																																				
					MATH-090	LEC	128.00																																				
					MATH-095	LEC	128.00																																				
					MATH-108	LEC	136.00																																				
					TOTAL		1,293.70	32.11																																			
									CIT (18.97) CS MATH (10.98) 117% (2.16)																																		
B-119	Classroom	621	35	1,447.55	BUSAD-015	LEC	101.20																																				
					BUSAD-027	LEC	60.00																																				
					BUSAD-039	LEC/DE	87.00																																				
					MATH-90	LEC	152.00																																				
					MATH-942	LEC	210.00																																				
					MATH-952	LEC	288.00																																				
					TOTAL		898.20	24.48																																			
									BUSAD (8.16) MATH (16.32) 46%																																		
B-120	Classroom	620	35	1,445.22	ADJUS-101	LEC	126.00																																				
					BUSAD-210	LEC	63.36																																				
					CORREC-103	LEC	120.00																																				
					ENGL-015	LEC	124.00																																				
					ENGL-101	LEC	124.00																																				
					ENGL-914	LEC	128.00																																				
					ESL-930	LEC	48.96																																				
					ESL-931	LEC	47.31																																				
					POLIT-138	LEC/LAB	147.00																																				
					TOTAL		928.63	36.28																																			
									Lab meets in room 6 hrs/wk ARR																																		
									ADJUS (2.83) BUSAD (3.33) CORREC (2.83) ENGL (10.98) ESL (9.48) POLIT (6.83) 68%																																		
B-121	Classroom	603	35	1,405.59	ENGL-101	LEC/LECO	112.00																																				
					ESL-907	LEC	79.04																																				
					ESL-930	LEC	100.00																																				
					HUMSV-188	LEC	78.00																																				
					POLIT-100	LEC	98.74																																				
					TOTAL		467.78	18.98																																			
									ENGL (3.66) ESL (6.83) HUMSV POLIT (5.66) 36% (2.83)																																		

TITLE V STANDARDS

Instructional space utilization is based on a maximum 70-hours per week (M-F 8:00am - 10:00pm)
 Classroom utilization standard for a College generating 140,000 WSCH or more should be at least 53-hours per week
 Lab utilization standard for a College generating 140,000 WSCH or more should be at least 27.5-hours per week

SBVC - FALL 2014 SPACE UTILIZATION: BY ROOM									HOURS PER WEEK														Min. Classroom Utilization Standard (53 Hrs/Wk)													
Room	Room Use	ASF	Stns.	WSCH Cap.	Course	Inst. Mthd.	WSCH	Hrs/Wk	Min. Lab Utilization Standard (27.5 Hrs/Wk)																											
									2	4	6	8	10	12	14	16	18	20	22	24	26	28	30	32	34	36	38	40	42	44	46	48	50	52	54	56
B-122	Classroom	592	35	1,379.95	ADJUS-104	LEC	126.00																													
					ADJUS-105	LEC	126.00																													
					ENGL-015	LEC	124.00																													
					ENGL-101	LEC	85.43																													
					ENGL-914	LEC	120.00																													
					POLIT-100	LEC	106.56																													
					TOTAL		687.99	24.14	ADJUS (5.66) ENGL (11.82) POLIT (6.66) 46%																											
B-123	Classroom	609	35	1,419.58	PSYCH-100	LEC	93.53		PSYCH 8%																											
					TOTAL		93.53	4.34																												
B-124	Classroom	607	35	1,414.92	BUSAD-100	LEC/DE	123.00																													
					BUSAD-108	LEC/DE	126.00																													
					BUSAD-210	LEC	342.00																													
					MATH-090	LEC	148.00																													
					MATH-095	LEC	577.66																													
					MATH-942	LEC	117.00																													
					MATH-962	LEC	187.20																													
					WST-073	LEC	78.00																													
					TOTAL		1,698.86	45.13	BUSAD (11.99) MATH (30.31) WST (2.83) 85%																											
B-125	Lab	1,001	35	782.03	ACCT-047	LEC	75.00																													
					ACCT-200	LEC/DE	252.00																													
					ACCT-201	LEC/DE	108.00																													
					CIT-010	LEC/LAB/DE	130.00																													
					CIT-116	LEC/LECO/DE	45.00																													
					CIT-122	LEC	60.00																													
					CS-130	LEC	99.00																													
					MATH-108	LEC	124.00																													
					TOTAL		893.00	22.63	ACCT (9.82) CIT (6.32) CS (2.83) MATH (3.66) 82%																											
B-130	Classroom	626	41	1,459.21	ACCT-200	LEC	148.00																													
					ACCT-201	LEC	164.00																													
					MATH-095	LEC	156.00																													
					MATH-102	LEC/DE	72.00																													
					MATH-103	LEC/DE	108.00																													
					MATH-151	LEC/LECO	141.00																													
					MATH-942	LEC	234.00																													
					TOTAL		1,023.00	27.30	ACCT (7.66) MATH (19.64) 52%																											
B-131	Classroom	608	37	1,417.25	ACCT-010	LEC	120.00																													
					ACCT-030	LEC	168.00																													
					ACCT-200	LEC	164.00																													
					BUSAD-013	LEC/DE	357.00																													
					BUSAD-100	LEC	384.00																													
					MATH-090	LEC	132.00																													
					MATH-9952	LEC	148.00																													
					TOTAL		1,473.00	30.47	ACCT (10.49) BUSAD (12.66) MATH (7.32) 57%																											

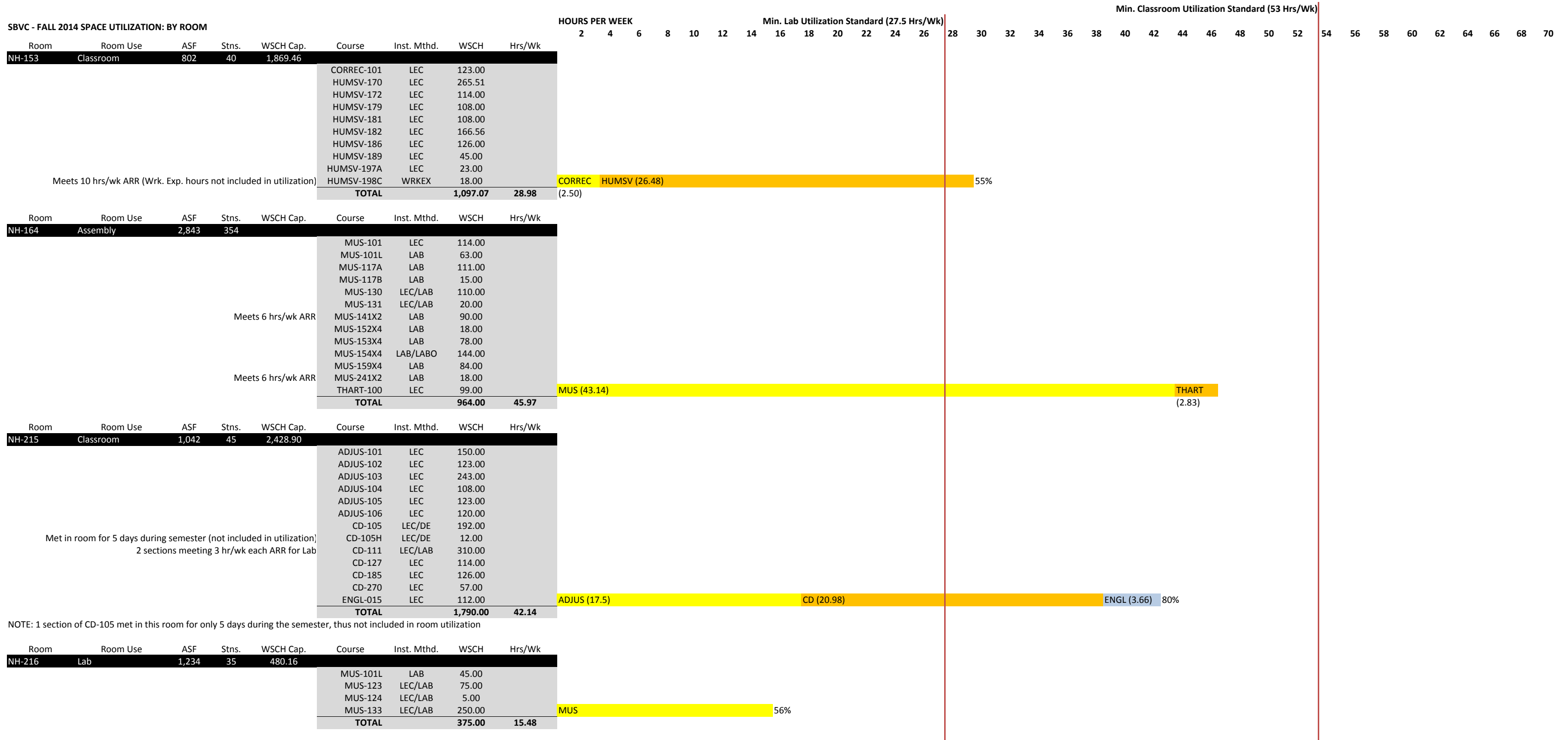
TITLE V STANDARDS

Instructional space utilization is based on a maximum 70-hours per week (M-F 8:00am - 10:00pm)
 Classroom utilization standard for a College generating 140,000 WSCH or more should be at least 53-hours per week
 Lab utilization standard for a College generating 140,000 WSCH or more should be at least 27.5-hours per week

SBVC - FALL 2014 SPACE UTILIZATION: BY ROOM									HOURS PER WEEK										Min. Classroom Utilization Standard (53 Hrs/Wk)																								
									2	4	6	8	10	12	14	16	18	20	22	24	26	28	30	32	34	36	38	40	42	44	46	48	50	52	54	56	58	60	62	64	66	68	70
Room	Room Use	ASF	Stns.	WSCH Cap.	Course	Inst. Mthd.	WSCH	Hrs/Wk																																			
NH-117	Lab	1,342	40	627.10	POLICE-002	LEC/LAB	873.37																																				
					POLICE-100	LEC	61.54																																				
					POLICE-101	LEC	61.03																																				
					POLICE-102	LEC	61.54																																				
					POLICE-103	LEC	61.31																																				
					TOTAL		1,118.79	19.15	POLICE											70%																							
NH-128	Classroom	1,014	40	2,363.64	CD-105	LEC	117.00																																				
					CD-244	LEC	108.00																																				
					CULART-235	LEC	75.00																																				
					HUMSV-173	LEC	124.64																																				
					HUMSV-184	LEC	42.00																																				
					HUMSV-197B	LEC	14.00																																				
					PHIL-101	LEC	270.00																																				
					PHIL-103	LEC	126.00																																				
					PHIL-105	LEC	120.00																																				
					TOTAL		996.64	25.32	CD (5.66)											CULART			HUMSV (6.83)			PHIL (10)			48%														
									(2.83)																																		
NH-134	Office	169	1	65.76	MUS-141X2	LAB	78.00																																				
					Meets 6 hrs/wk ARR																																						
					TOTAL		78.00	6.00	MUS																																		
NH-151	Classroom	736	39	1,715.62	ENGL-015	LEC/LECO	500.00																																				
					ENGL-101	LEC	356.00																																				
					ENGL-102	LEC	112.00																																				
					ENGL-914	LEC	440.00																																				
					TOTAL		1,408.00	44.09	ENGL											83%																							
NH-152	Classroom	753	43	1,755.24	HUMSV-167	LEC	108.00																																				
					HUMSV-170	LEC/DE	105.00																																				
					HUMSV-173	LEC	130.72																																				
					HUMSV-179	LEC	84.00																																				
					HUMSV-181	LEC	109.94																																				
					HUMSV-183	LEC	72.00																																				
					HUMSV-190	LEC	115.52																																				
					HUMSV-195A	LEC	24.00																																				
					HUMSV-198A	WRKEX	46.00																																				
					HUMSV-198B	WRKEX	28.00																																				
					PHIL-103	LEC	123.00																																				
					PHIL-180	LEC	81.00																																				
					RELIG-180	LEC	45.00																																				
					TOTAL		1,072.18	27.14	HUMSV (22.14)											PHIL/RELIG (5)			51%																				

TITLE V STANDARDS

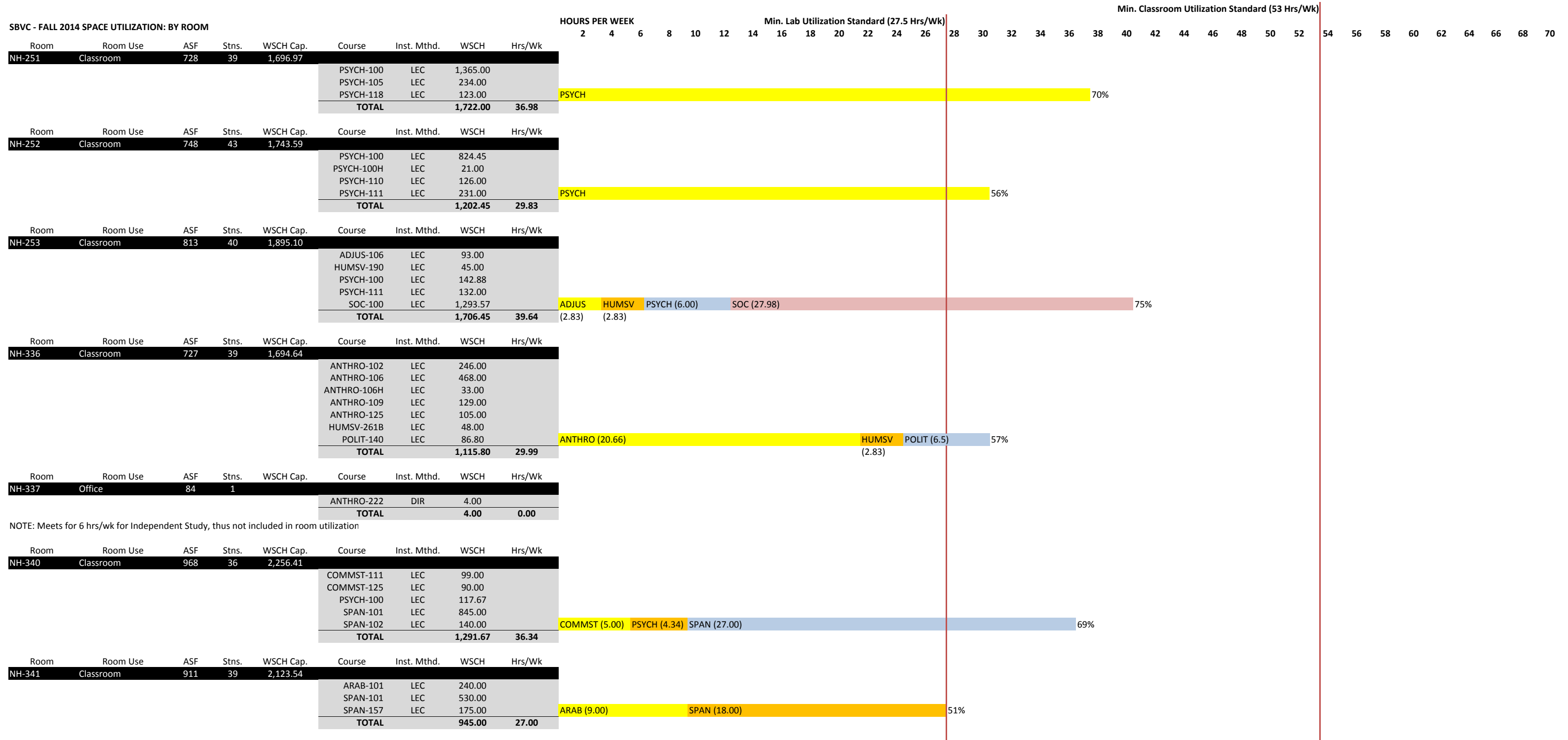
Instructional space utilization is based on a maximum 70-hours per week (M-F 8:00am - 10:00pm)
 Classroom utilization standard for a College generating 140,000 WSCH or more should be at least 53-hours per week
 Lab utilization standard for a College generating 140,000 WSCH or more should be at least 27.5-hours per week



NOTE: 1 section of CD-105 met in this room for only 5 days during the semester, thus not included in room utilization

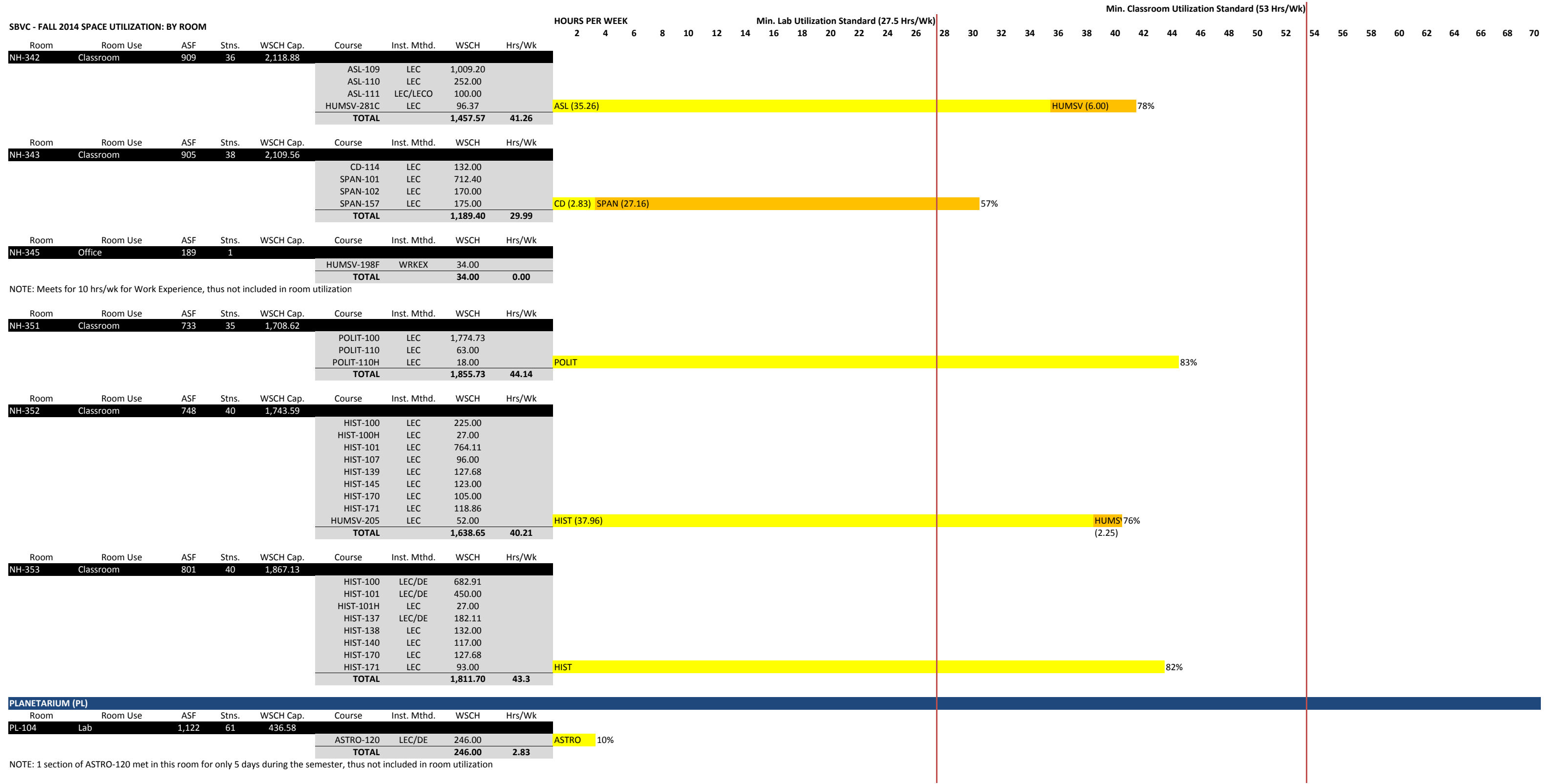
TITLE V STANDARDS

Instructional space utilization is based on a maximum 70-hours per week (M-F 8:00am - 10:00pm)
 Classroom utilization standard for a College generating 140,000 WSCH or more should be at least 53-hours per week
 Lab utilization standard for a College generating 140,000 WSCH or more should be at least 27.5-hours per week



TITLE V STANDARDS

Instructional space utilization is based on a maximum 70-hours per week (M-F 8:00am - 10:00pm)
 Classroom utilization standard for a College generating 140,000 WSCH or more should be at least 53-hours per week
 Lab utilization standard for a College generating 140,000 WSCH or more should be at least 27.5-hours per week



TITLE V STANDARDS

Instructional space utilization is based on a maximum 70-hours per week (M-F 8:00am - 10:00pm)
 Classroom utilization standard for a College generating 140,000 WSCH or more should be at least 53-hours per week
 Lab utilization standard for a College generating 140,000 WSCH or more should be at least 27.5-hours per week

SBVC - FALL 2014 SPACE UTILIZATION: BY ROOM									HOURS PER WEEK		Min. Classroom Utilization Standard (53 Hrs/Wk)																																
									2	4	6	8	10	12	14	16	18	20	22	24	26	28	30	32	34	36	38	40	42	44	46	48	50	52	54	56	58	60	62	64	66	68	70
PHYSICAL SCIENCES (PS)																																											
Room	Room Use	ASF	Stns.	WSCH Cap.	Course	Inst. Mthd.	WSCH	Hrs/Wk																																			
PS-107	Classroom	1,001	40	2,333.33	MATH-090	LEC/LECO	308.00																																				
					MATH-102	LEC/DE	868.00																																				
					MATH-103	LEC	160.00																																				
					MATH-115	LEC	120.00																																				
					MATH-250	LEC	292.00																																				
					MATH-265	LEC/LECO	136.00																																				
					SDEV-102	LEC	72.00																																				
					TOTAL		1,956.00	40.76																																			
									MATH (38.93)																																		
									SDEV 77% (1.83)																																		
Room	Room Use	ASF	Stns.	WSCH Cap.	Course	Inst. Mthd.	WSCH	Hrs/Wk																																			
PS-113	Office	90	1		GEOL-222	DIR	2.00																																				
					TOTAL		2.00	0																																			
									NOTE: Meets for 7.71 hrs/wk for Independent Study, thus not included in room utilization																																		
Room	Room Use	ASF	Stns.	WSCH Cap.	Course	Inst. Mthd.	WSCH	Hrs/Wk																																			
PS-116	Office	92	1		GIS-098	WRKEX	2.00																																				
					Meets 10 hrs/wk ARR (Wrk. Exp. hours not included in utilization)	GIS-222	DIR	1.00																																			
					Meets 3.84 hrs/wk ARR (Indep. Study hours not included in utilization)	TOTAL	2.00	0																																			
Room	Room Use	ASF	Stns.	WSCH Cap.	Course	Inst. Mthd.	WSCH	Hrs/Wk																																			
PS-135	Lab	911	30	354.47	CIT-101	LEC/DE	63.00																																				
					MATH-095	LEC/DE	120.00																																				
					MATH-108	LEC/LECO/DE	456.00																																				
					MATH-942	LEC	84.00																																				
					TOTAL		723.00	19.97																																			
									CIT (2.83) MATH (17.14) 73%																																		
Room	Room Use	ASF	Stns.	WSCH Cap.	Course	Inst. Mthd.	WSCH	Hrs/Wk																																			
PS-147	Classroom	933	42	2,174.83	CHEM-101	LEC	101.52																																				
					MATH-090	LEC	372.00																																				
					MATH-095	LEC/LECO	480.00																																				
					MATH-102	LEC	316.00																																				
					MATH-942	LEC	111.00																																				
					TOTAL		1,380.52	33.59																																			
									CHEM MATH (31.09) (2.50) 63%																																		
Room	Room Use	ASF	Stns.	WSCH Cap.	Course	Inst. Mthd.	WSCH	Hrs/Wk																																			
PS-199	Classroom	951	40	2,216.78	CHEM-101	LEC	243.00																																				
					CHEM-104	LEC	143.70																																				
					CHEM-150	LEC	181.35																																				
					CHEM-151	LEC	53.01																																				
					CHEM-212	LEC	149.46																																				
					CHEM-212H	LEC	16.92																																				
					CHEM-213	LEC	33.84																																				
					WST-032	LEC	33.00																																				
					TOTAL		854.28	34.15																																			
									CHEM (31.32) WST (2.83) 64%																																		
Room	Room Use	ASF	Stns.	WSCH Cap.	Course	Inst. Mthd.	WSCH	Hrs/Wk																																			
PS-206	Lab	1,191	36	463.42	CHEM-150	LEC	125.55																																				
					CHEM-150H	LEC	25.11																																				
					CHEM-151	LEC	33.48																																				
					PHYSIC-150A	LAB	105.38																																				
					PHYSIC-200	LAB/LABO	279.38																																				
					TOTAL		568.90	18.82																																			
									CHEM (7.5) PHYSIC (11.32) 68%																																		

TITLE V STANDARDS

Instructional space utilization is based on a maximum 70-hours per week (M-F 8:00am - 10:00pm)
 Classroom utilization standard for a College generating 140,000 WSCH or more should be at least 53-hours per week
 Lab utilization standard for a College generating 140,000 WSCH or more should be at least 27.5-hours per week

Room	Room Use	ASF	Stns.	WSCH Cap.	Course	Inst. Mthd.	WSCH	Hrs/Wk	HOURS PER WEEK		Min. Classroom Utilization Standard (53 Hrs/Wk)																							
									2	4	6	8	10	12	14	16	18	20	22	24	26	28	30	32	34	36	38	40	42	44	46	48	50	52
PS-214	Lab	1,240	36	482.49	ASTRO-125	LAB	69.00																											
					CHEM-151	LEC	53.01																											
					CHEM-151H	LEC	13.95																											
					PHYSIC-101	LEC/LAB	689.52			ASTRO	CHEM	PHYSIC (22.31)																			101%			
					TOTAL		825.48	27.64	(2.83)	(2.50)																								
PS-216	Classroom	941	38	2,193.47	CHEM-101	LEC	81.78																											
					CHEM-150	LEC	189.00																											
					GEOG-110	LEC	99.00																											
					PHIL-105	LEC	123.00																											
					PHT-074	LEC	14.00																											
					WST-061	LEC	101.40			CHEM (5.00)	GEOG	PHIL (2.5)	PHT	WST (8.49)																38%				
					TOTAL		608.18	20.32			(2.50)	(1.83)																						
PS-217	Lab	1,240	40	482.49	ARCH-100	LEC/LAB	180.00																											
					ARCH-120	LEC/LAB	96.00																											
					ARCH-146	LEC	81.00																											
					GEOG-100	LEC/LAB	73.92																											
					GIS-100	LEC/LAB	29.57			ARCH (18.97)	GEOG/GIS (5.17)																			88%				
					TOTAL		460.49	24.14																										
PS-219	Lab	1,195	44	464.98	GEOL-101	LEC	168.00																											
					GEOL-111	LAB	51.00																											
					GEOL-250	LEC	39.52																											
					OCEAN-101	LEC	108.00																											
					OCEAN-111	LAB	57.00			GEOL (11.66)	OCEAN (5.66)																			63%				
					TOTAL		423.52	17.32																										
PS-221	Lab	1,241	38	482.88	GEOG-102	LEC	102.00																											
					GEOG-106	LEC/LECO	106.97																											
					GEOG-110	LEC	892.32																											
					GEOG-111	LAB	468.00																											
					GEOG-111H	LAB	18.00			GEOG																					182%			
					TOTAL		1,587.29	50.13																										
PS-227	Classroom	945	40	2,202.80	MATH-090	LEC	324.00																											
					MATH-103	LEC	300.00																											
					MATH-115	LEC	57.00																											
					MATH-151	LEC	144.00																											
					MATH-250	LEC	132.00																											
					MATH-942	LEC	399.00																											
					MATH-952	LEC/LECO	176.00			MATH																					65%			
					TOTAL		1,532.00	34.6																										

TITLE V STANDARDS

Instructional space utilization is based on a maximum 70-hours per week (M-F 8:00am - 10:00pm)
Classroom utilization standard for a College generating 140,000 WSCH or more should be at least 53-hours per week
Lab utilization standard for a College generating 140,000 WSCH or more should be at least 27.5-hours per week

SBVC - FALL 2014 SPACE UTILIZATION: BY ROOM

Room	Room Use	ASF	Stns.	WSCH Cap.	Course	Inst. Mthd.	WSCH	Hrs/Wk	HOURS PER WEEK		Min. Classroom Utilization Standard (53 Hrs/Wk)																																									
									2	4	6	8	10	12	14	16	18	20	22	24	26	28	30	32	34	36	38	40	42	44	46	48	50	52	54	56	58	60	62	64	66	68	70									
PS-228	Classroom	1,583	58	3,689.98																																																
					CHEM-101	LEC	1,006.74																																													
					CHEM-110	LEC	85.12																																													
					MATH-251	LEC	212.00																																													
					WST-011	LEC	6.86																																													
					WST-020	LEC	6.54																																													
					WST-021	LEC	5.34																																													
					WST-098	WRKEX/WRKEO	23.00																																													
Meets 5 hrs/wk ARR (Wrk. Exp. hours not included in utilization)									CHEM (23.5)	MATH (3.66)	WST (7.66)																						66%																			
					TOTAL		1,345.60	34.82																																												
PS-229	Classroom	1,526	58	3,557.11																																																
					PHYSIC-101	LEC	462.48																																													
					PHYSIC-150A	LEC/LAB	191.42																																													
					PHYSIC-200	LEC/LAB/LABO	580.22																																													
					TOTAL		1,234.12	19.3																																												
																																			36%																	
PS-230	Classroom	930	40	2,167.83																																																
					MATH-090	LEC	292.00																																													
					MATH-095	LEC	135.77																																													
					MATH-102	LEC	312.00																																													
					MATH-151	LEC/LECO	148.00																																													
					MATH-251	LEC/LECO	152.00																																													
					TOTAL		1,039.77	30.81																																												
																																											58%									
PS-310	Lab	1,620	24	630.35																																																
					CHEM-104	LEC/LAB/DE	252.30																																													
					CHEM-212	LAB/LABO	168.54																																													
					CHEM-212H	LAB	19.08																																													
					CHEM-213	LAB	38.16																																													
					TOTAL		478.08	23.47																																												
																																											85%									
PS-312	Lab	1,215	34	472.76																																																
					CHEM-101	LAB	249.36																																													
					CHEM-150	LAB	124.20																																													
					CHEM-151	LAB	310.50																																													
					CHEM-151H	LAB	31.05																																													
					TOTAL		715.11	31.13																																												
																																											113%									
PS-315	Lab	1,240	34	482.49																																																
					CHEM-101	LAB	141.60																																													
					CHEM-150	LAB	689.31																																													
					CHEM-150H	LAB	55.89																																													
					TOTAL		886.80	33.96																																												
																																											123%									
PS-316	Lab	1,240	34	482.49																																																
					CHEM-101	LAB	567.54																																													
					PHT-060	LAB	51.85																																													
					PHT-070	LEC/LAB	30.00																																													
					TOTAL		649.39	27.3																																												
																																											99%									
PS-318	Lab	1,270	34	494.16																																																
					CHEM-101	LAB	626.46																																													
					TOTAL		626.46	22.64																																												
																																											82%									

TITLE V STANDARDS

Instructional space utilization is based on a maximum 70-hours per week (M-F 8:00am - 10:00pm)
 Classroom utilization standard for a College generating 140,000 WSCH or more should be at least 53-hours per week
 Lab utilization standard for a College generating 140,000 WSCH or more should be at least 27.5-hours per week

SBVC - FALL 2014 SPACE UTILIZATION: BY ROOM									HOURS PER WEEK										Min. Classroom Utilization Standard (53 Hrs/Wk)																								
									2	4	6	8	10	12	14	16	18	20	22	24	26	28	30	32	34	36	38	40	42	44	46	48	50	52	54	56	58	60	62	64	66	68	70
SNYDER GYM (SG)																																											
Room	Room Use	ASF	Stns.	WSCH Cap.	Course	Inst. Mthd.	WSCH	Hrs/Wk																																			
SG-2	Athletics/P.E. (Main Gym)	14,939	0		DANCE-101A	LAB	96.00																																				
					DANCE-102A	LAB	42.00																																				
					DANCE-102B	LAB	6.00																																				
					DANCE-105A	LAB	174.00																																				
					DANCE-105B	LAB	6.00																																				
					KINS-112A	LAB	162.00																																				
					KINF-168A	LAB	42.00																																				
					KINF-168B	LAB	3.00																																				
					KINF-168C	LAB	84.00																																				
					KINX-120AX3	LAB	45.86																																				
					KINX-121AX3	LAB	63.09																																				
					KINX-121CX3	LAB	86.23																																				
					TOTAL		810.18	16.32																																			
NOTE: Hrs/wk usage for intercollegiate basketball (KINX-120AX3, KINX-121AX3, KINX-121CX3) not included																																											
SG-30	Athletics/P.E. Service	370	20		KIN-232	LEC/LAB	160.00																																				
					KINF-108A	LAB	39.00																																				
					TOTAL		199.00	7.16																																			
SG-32	Athletics/P.E.	3,491	0		KINF-108A	LAB/LABO	441.00																																				
					KINF-108B	LAB	363.00																																				
					KINF-108C	LAB	141.00																																				
					TOTAL		945.00	24.99																																			
TECHNICAL (T)																																											
Room	Room Use	ASF	Stns.	WSCH Cap.	Course	Inst. Mthd.	WSCH	Hrs/Wk																																			
T-101	Classroom	690	36	1,608.39	TECALC-087	LEC	192.00																																				
					WELD-045	LEC	7.90																																				
					WST-045	LEC/LAB	82.00																																				
					WST-081	LEC	66.00																																				
					WST-091	LEC	51.00																																				
					WST-092	LEC	33.00																																				
					TOTAL		431.90	21.73																																			
									TECALC (7.49)										WELD WST (12.07) 41%																								
									(2.17)																																		
T-102	Classroom	457	24	1,065.27	AERO-104	LEC	108.00																																				
					AUTO-064	LEC/LAB/LABO	147.00																																				
					AUTO-068	LEC	103.25																																				
					WELD-047	LEC	4.68																																				
					1 week class (hours not included in utilization)	WST-010	LEC/LECO	4.57																																			
					TOTAL		367.50	15.48																																			
									AERO (5.66)										AUTO (8.99)										WELD (0.83) 29%														

TITLE V STANDARDS

Instructional space utilization is based on a maximum 70-hours per week (M-F 8:00am - 10:00pm)
 Classroom utilization standard for a College generating 140,000 WSCH or more should be at least 53-hours per week
 Lab utilization standard for a College generating 140,000 WSCH or more should be at least 27.5-hours per week

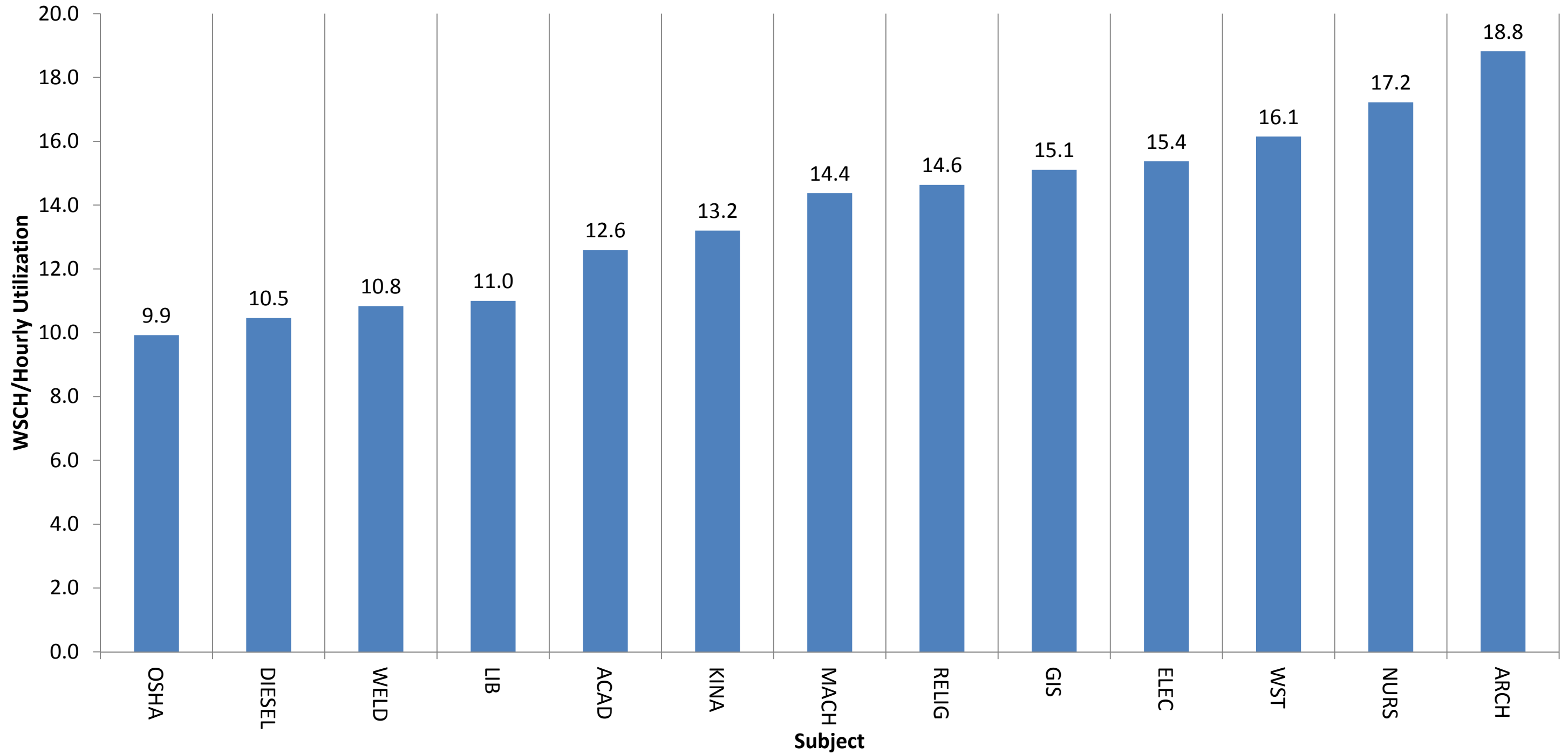
SBVC - FALL 2014 SPACE UTILIZATION: BY ROOM								HOURS PER WEEK														Min. Classroom Utilization Standard (53 Hrs/Wk)																																
Room	Room Use	ASF	Stns.	WSCH Cap.	Course	Inst. Mthd.	WSCH	Hrs/Wk	2	4	6	8	10	12	14	16	18	20	22	24	26	28	30	32	34	36	38	40	42	44	46	48	50	52	54	56	58	60	62	64	66	68	70											
WG-13	Athletics/P.E.	10,394	0																																																			
	Main Gym				KINA-186A	LAB	30.00																																															
					KINA-186B	LAB	6.00																																															
					KINF-105A	LAB	138.00																																															
					KINF-105B	LAB	24.00																																															
					KINF-105C	LAB	6.00																																															
					KINF-112A	LAB	211.90																																															
					KINF-112B	LAB	36.00																																															
					KINF-112C	LAB	9.00																																															
					KINF-168A	LAB	231.00																																															
					KINF-168B	LAB	18.00																																															
					KINF-168C	LAB	12.00																																															
					KINF-190A	LAB	147.00																																															
					KINF-190B	LAB	30.00																																															
					KINF-190C	LAB	6.00																																															
					KINS-103A	LAB	24.00																																															
					KINS-103B	LAB	6.00																																															
					KINS-103C	LAB	6.00																																															
					KINX-116AX3	LAB	108.00																																															
					TOTAL		1,048.90	30.83																																														
NOTE: Hrs/wk usage for intercollegiate volleyball (KINX-116AX3) not included																																																						
WG-22	Athletics/P.E. Service	731	0																																																			
	Room 18 on Space Inventory (Sports Medicine Treatment)				NURS-202	LAB	165.99																																															
					TOTAL		165.99	13.17																																														

SBVC - FALL 2014 SPACE UTILIZATION: WSCH GENERATION PER HOURS/WK UTILIZATION

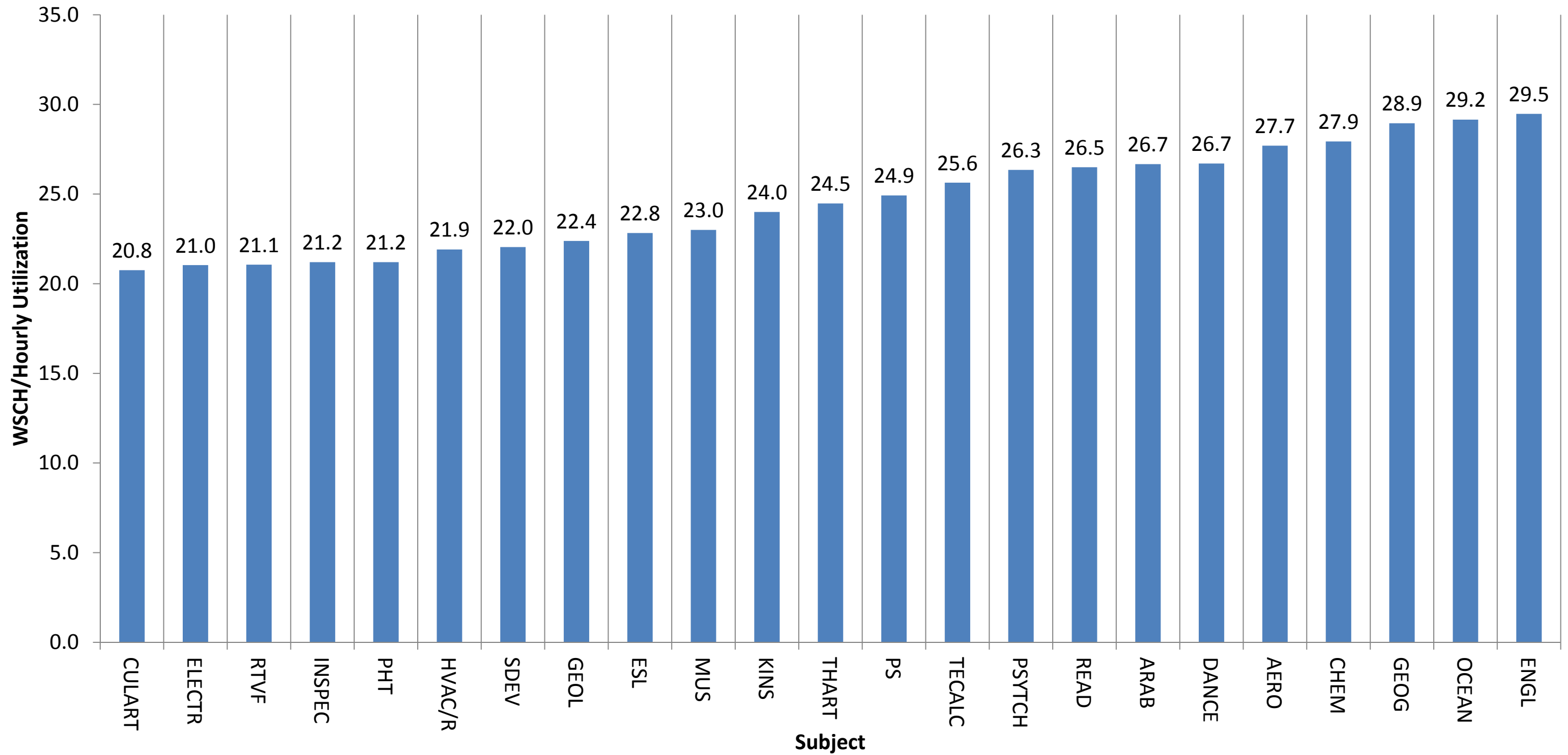
SBVC FALL 2014 UTILIZATION						
Subject Title & Abbreviation		No. of Rms.	ASF	Hrs/Wk.	On-Campus WSCH	WSCH / Hrly Util.
Academic Advancement	ACAD	2	1,420	17.32	218	12.6
Accounting	ACCT	3	2,235	27.97	1,199	42.9
Administration of Justice	ADJUS	4	3,067	28.82	1,338	46.4
Aeronautics	AERO	4	10,318	37.8	1,047	27.7
Anthropology	ANTHRO	1	727	20.66	985	47.7
Arabic	ARAB	1	911	9.00	240	26.7
Architecture & Environmental Design	ARCH	1	1,240	18.97	357	18.8
Art	ART	7	9,756	140.98	4,755	33.7
American Sign Language	ASL	1	909	35.26	1,361	38.6
Astronomy	ASTRON	2	2,362	5.66	315	55.7
Automotive	AUTO	9	17,292	105.46	3,307	31.4
Biology	BIOL	12	12,159	242.59	7,855	32.4
Business Administration	BUSAD	4	2,456	36.14	1,644	45.5
Child Development	CD	6	6,471	113.08	3,816	33.7
Chemistry	CHEM	11	13,424	203.33	5,680	27.9
Computer Information Technology	CIT	6	5,911	52.4	2,544	48.5
Communication Studies	COMMST	7	4,973	105.93	3,695	34.9
Corrections	CORREC	2	1,422	5.33	243	45.6
Computer Science	CS	3	3,008	15.96	732	45.9
Culinary Arts	CULART	4	5,152	53.29	1,106	20.8
Dance	DANCE	2	15,706	13.82	369	26.7
Diesel	DIESEL	3	3,431	52.38	548	10.5
Economics	ECON	2	1,939	25.81	1,695	65.7
Electricity	ELEC	1	874	11.32	174	15.4
Electronics	ELECTR	3	3,097	59.94	1,261	21.0
English	ENGL	19	13,153	391.26	11,531	29.5
English as Second Language	ESL	4	2,470	27.29	623	22.8
Food & Nutrition	FN	1	960	17.17	666	38.8
Geography	GEOG	4	4,171	62.04	1,796	28.9
Geology	GEOL	1	1,195	11.66	261	22.4
Geographic Information Systems	GIS	3	2,672	13.57	205	15.1
Health Education	HEALTH	2	1,708	20.49	1,120	54.7
History	HIST	4	4,129	84.92	3,584	42.2
Human Services	HUMSV	12	10,728	87.17	2,886	33.1
Heating, Ventilation A/C & Refrigeration	HVAC/R	4	6,118	40.62	890	21.9
Inspection Technology	INSPEC	1	960	5.66	120	21.2

SBVC FALL 2014 UTILIZATION						
Subject Title & Abbreviation		No. of Rms.	ASF	Hrs/Wk.	On-Campus WSCH	WSCH / Hrly Util.
Kinesiology	KIN	2	1,061	16.49	700	42.4
Kinesiology Adapted	KINA	2	13,134	5.00	66	13.2
Kinesiology Fitness	KINF	5	31,895	75.82	2,987	39.4
Kinesiology Team/Sport & Skill	KINS	2	25,333	5	120	24.0
Kinesiology Varsity	KINX	2	25,333	N/A	2,491	N/A
Library Technology	LIB	1	664	6.91	76	11.0
Machine Technology	MACH	3	5,274	22.96	330	14.4
Mathematics	MATH	22	20,046	460.15	18,210	39.6
Music	MUS	4	5,013	84.95	1,954	23.0
Nursing	NURS	11	11,163	165.48	2,850	17.2
Oceanography	OCEAN	1	1,195	5.66	165	29.2
Occupational Safety and Health Admin.	OSHA	1	1,025	4.03	40	9.9
Philosophy/Religious Studies	PHIL	4	3,870	20	963	48.2
Pharmacy Technology	PHT	4	4,108	17.64	374	21.2
Physics	PHYSIC	3	3,957	52.93	2,308	43.6
Police Science	POLICE	1	1,342	19.15	1,119	58.4
Political Science	POLIT	5	3,275	69.79	2,295	32.9
Physical Science	PS	1	749	3.17	79	24.9
Psychology	PSYCH	5	3,866	81.48	3,411	41.9
Psychiatric Technology	PSYTCH	2	1,540	40.8	1,075	26.3
Reading & Skills Study	READ	6	4,026	131.75	3,491	26.5
Religious Studies	RELIG	2	1,303	5.33	78	14.6
Radio, Television & Film	RTVF	2	2,220	39.36	829	21.1
Student Development	SDEV	8	7,492	50.13	1,105	22.0
Sociology	SOC	1	813	27.98	1,294	46.2
Spanish	SPAN	5	4,410	81.81	3,399	41.5
Technical Calculations	TECALC	1	690	7.49	192	25.6
Theater Arts	THART	4	8,594	32.81	803	24.5
Welding Technology	WELD	8	10,058	79.48	861	10.8
Water Supply Technology	WST	9	7,839	60.69	980	16.1

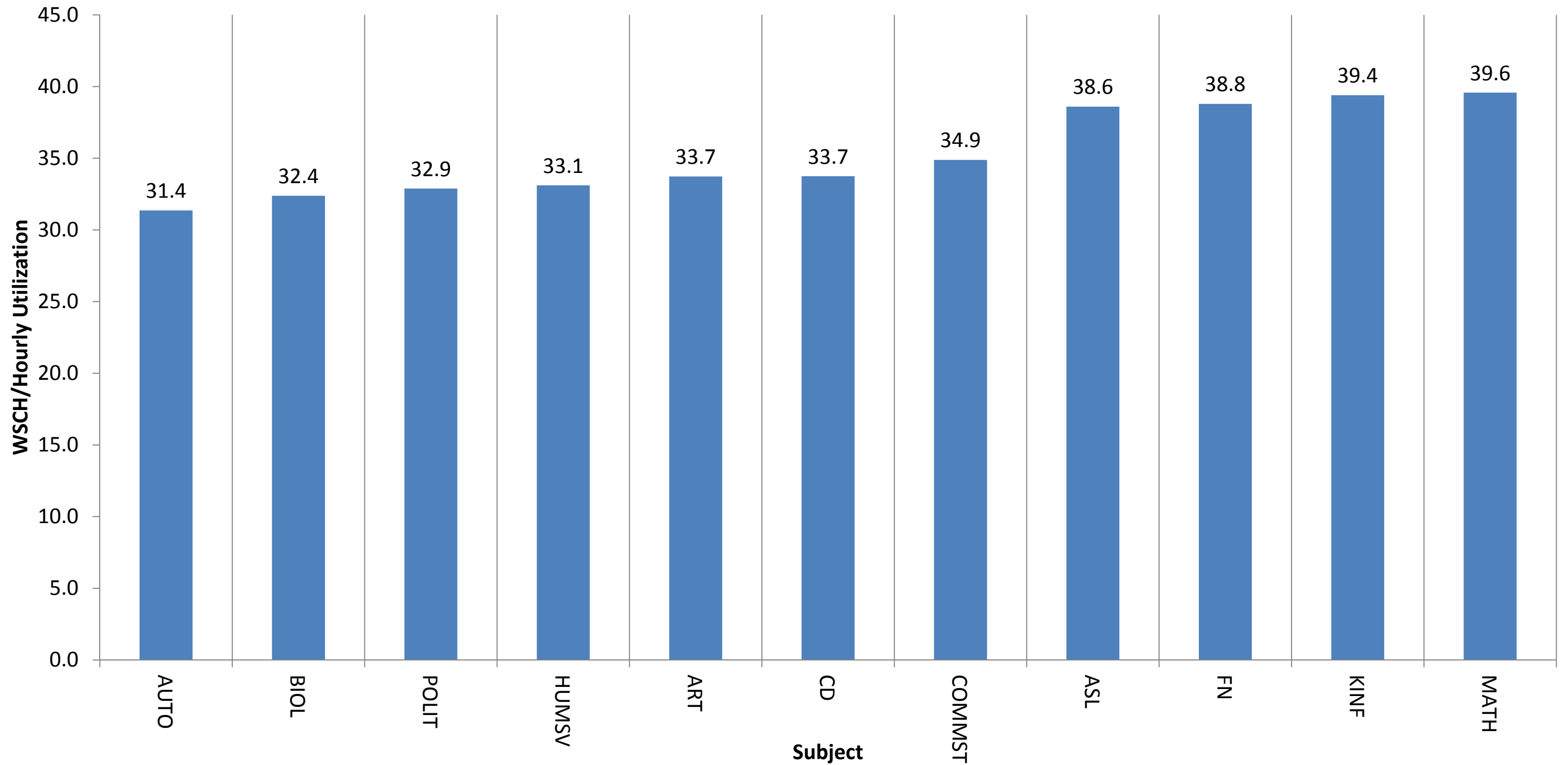
Fall 2014 - WSCH by Hourly Utilization Low WSCH/Hourly Utilization



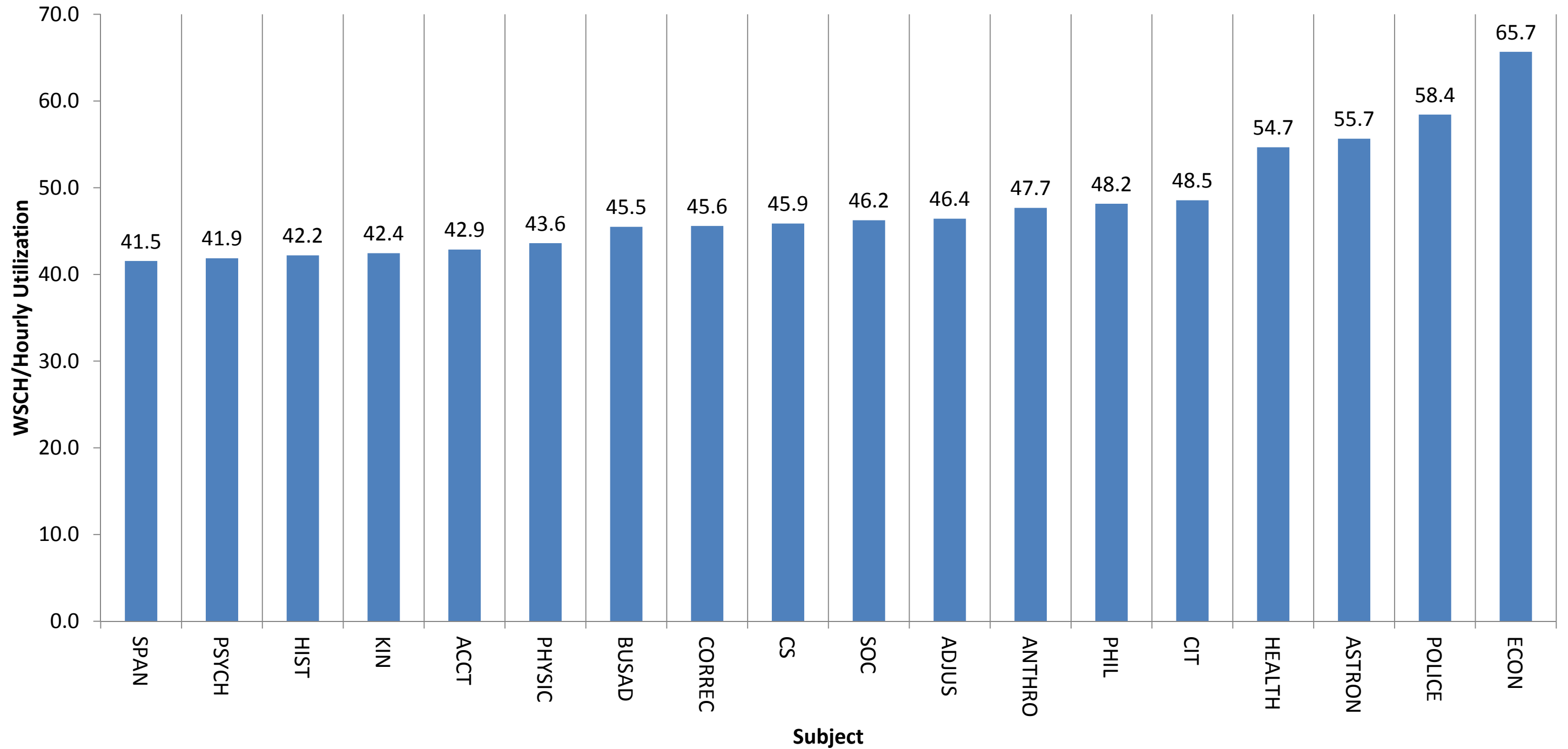
Fall 2014 - WSCH by Hourly Utilization Low-Medium WSCH/Hourly Utilization



Fall 2014 - WSCH by Hourly Utilization High-Medium WSCH/Hourly Utilization



Fall 2014 - WSCH by Hourly Utilization High WSCH/Hourly Utilization

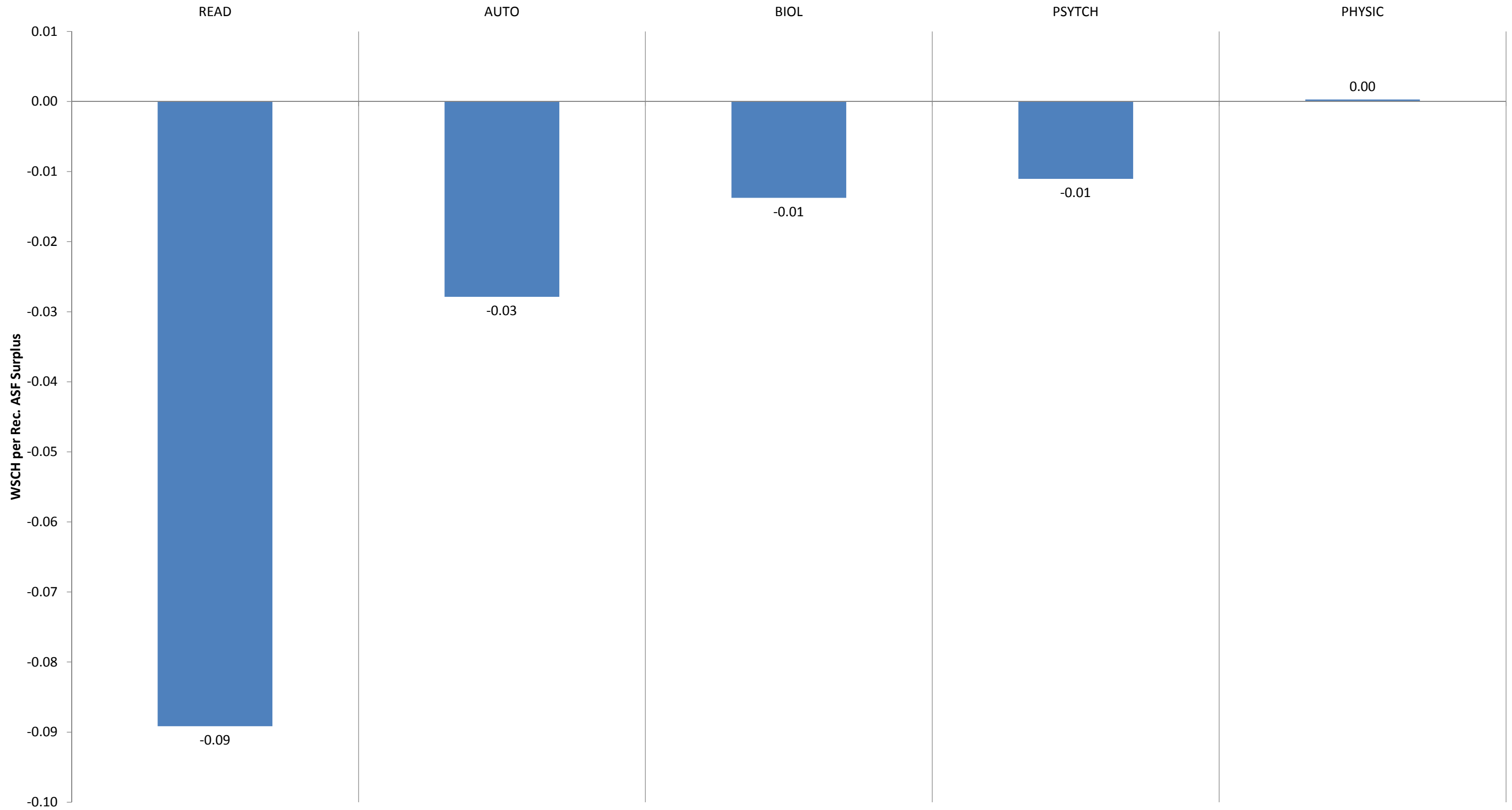


SBVC - FALL 2014 SPACE UTILIZATION: WSCH GENERATION AND RECOMMENDED SPACE NEEDS/SURPLUS PER TITLE V

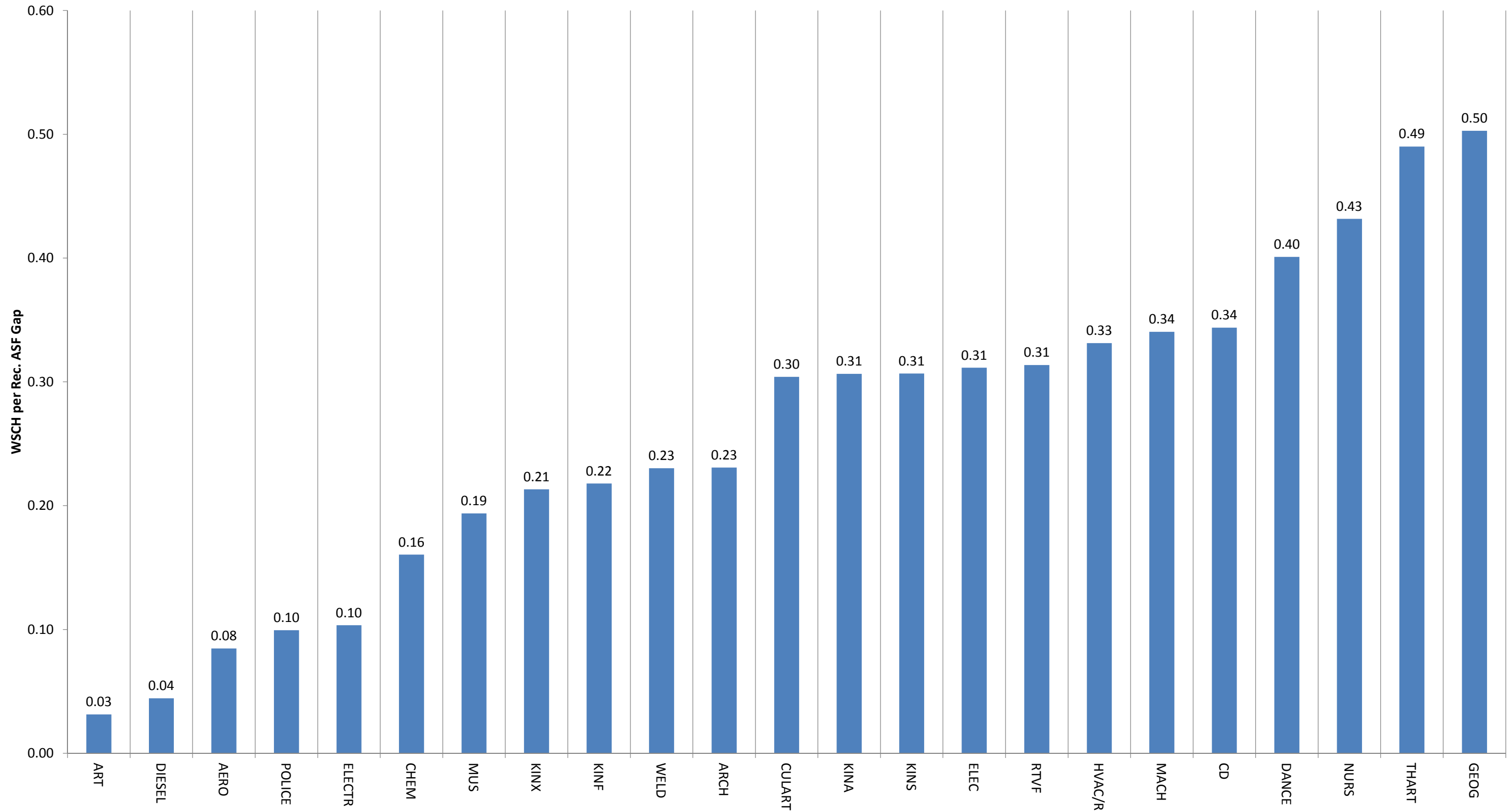
Subject Title & Abbreviation	On-Campus WSCH	% Lecture WSCH	% Lab WSCH	Total ASF Util.	Title V Rec. Lecture ASF	Title V Rec. Lab ASF	Space Need / (Surplus)	WSCH / ASF Util.	WSCH / Title V Rec. ASF	WSCH / ASF Gap	
Academic Advancement	ACAD	218	100%	0%	1,420	94	0	(1,326)	0.15	2.33	2.18
Accounting	ACCT	1,199	100%	0%	2,235	514	0	(1,721)	0.54	2.33	1.79
Administration of Justice	ADJUS	1,338	100%	0%	3,067	574	0	(2,493)	0.44	2.33	1.89
Aeronautics	AERO	1,047	30%	70%	10,318	135	5,489	(4,694)	0.10	0.19	0.08
Anthropology	ANTHRO	985	100%	0%	727	423	0	(304)	1.35	2.33	0.98
Arabic	ARAB	240	100%	0%	911	103	0	(808)	0.26	2.33	2.07
Architecture & Environmental Design	ARCH	357	30%	70%	1,240	46	642	(552)	0.29	0.52	0.23
Art	ART	4,755	30%	70%	9,756	612	8,554	(590)	0.49	0.52	0.03
American Sign Language	ASL	1,361	100%	0%	909	584	0	(325)	1.50	2.33	0.83
Astronomy	ASTRON	315	80%	20%	2,362	108	162	(2,092)	0.13	1.17	1.03
Automotive	AUTO	3,307	30%	70%	17,292	426	19,816	2,949	0.19	0.16	-0.03
Biology	BIOL	7,855	40%	60%	12,159	1,348	11,076	264	0.65	0.63	-0.01
Business Administration	BUSAD	1,644	100%	0%	2,456	705	0	(1,751)	0.67	2.33	1.66
Child Development	CD	3,816	70%	30%	6,471	1,146	2,942	(2,383)	0.59	0.93	0.34
Chemistry	CHEM	5,680	40%	60%	13,424	975	8,759	(3,691)	0.42	0.58	0.16
Computer Information Technology	CIT	2,544	80%	20%	5,911	873	870	(4,168)	0.43	1.46	1.03
Communication Studies	COMMST	3,695	100%	0%	4,973	1,585	0	(3,388)	0.74	2.33	1.59
Corrections	CORREC	243	100%	0%	1,422	104	0	(1,318)	0.17	2.33	2.16
Computer Science	CS	732	40%	60%	3,008	126	751	(2,131)	0.24	0.84	0.59
Culinary Arts	CULART	1,106	30%	70%	5,152	142	1,990	(3,020)	0.21	0.52	0.30
Dance	DANCE	369	10%	90%	15,706	16	853	(14,837)	0.02	0.42	0.40
Diesel	DIESEL	548	45%	55%	3,431	106	2,580	(745)	0.16	0.20	0.04
Economics	ECON	1,695	100%	0%	1,939	727	0	(1,212)	0.87	2.33	1.46
Electricity	ELEC	174	45%	55%	874	34	307	(533)	0.20	0.51	0.31
Electronics	ELECTR	1,261	45%	55%	3,097	243	2,226	(627)	0.41	0.51	0.10
English	ENGL	11,531	100%	0%	13,153	4,947	0	(8,206)	0.88	2.33	1.45
English as Second Language	ESL	623	100%	0%	2,470	267	0	(2,203)	0.25	2.33	2.08
Food & Nutrition	FN	666	100%	0%	960	286	0	(674)	0.69	2.33	1.64
Geography	GEOG	1,796	80%	20%	4,171	616	923	(2,631)	0.43	1.17	0.74
Geology	GEOL	261	80%	20%	1,195	90	134	(971)	0.22	1.17	0.95
Geographic Information Systems	GIS	205	40%	60%	2,672	35	210	(2,426)	0.08	0.84	0.76
Health Education	HEALTH	1,120	100%	0%	1,708	480	0	(1,228)	0.66	2.33	1.68
History	HIST	3,584	100%	0%	4,129	1,538	0	(2,591)	0.87	2.33	1.46
Human Services	HUMSV	2,886	100%	0%	10,728	1,238	0	(9,490)	0.27	2.33	2.06
Heating, Ventilation A/C & Refrig.	HVAC/R	890	40%	60%	6,118	153	1,714	(4,251)	0.15	0.48	0.33
Inspection Technology	INSPEC	120	100%	0%	960	51	0	(909)	0.13	2.33	2.21
Kinesiology	KIN	700	100%	0%	1,061	300	0	(761)	0.66	2.33	1.67
Kinesiology Adapted	KINA	66	0%	100%	13,134	0	212	(12,922)	0.01	0.31	0.31
Kinesiology Fitness	KINF	2,987	0%	100%	31,895	0	9,588	(22,307)	0.09	0.31	0.22
Kinesiology Team/Sport & Skill	KINS	120	0%	100%	25,333	0	385	(24,948)	0.00	0.31	0.31
Kinesiology Varsity	KINX	2,491	0%	100%	25,333	0	7,996	(17,337)	0.10	0.31	0.21
Library Technology	LIB	76	75%	25%	664	24	61	(579)	0.11	0.89	0.78
Machine Technology	MACH	330	40%	60%	5,274	57	762	(4,455)	0.06	0.40	0.34
Mathematics	MATH	18,210	100%	0%	20,046	7,812	0	(12,234)	0.91	2.33	1.42

Subject Title & Abbreviation	On-Campus WSCH	% Lecture WSCH	% Lab WSCH	Total ASF Util.	Title V Rec. Lecture ASF	Title V Rec. Lab ASF	Space Need / (Surplus)	WSCH / ASF Util.	WSCH / Title V Rec. ASF	WSCH / ASF Gap	
Music	MUS	1,954	40%	60%	5,013	335	3,013	(1,665)	0.39	0.58	0.19
Nursing	NURS	2,850	40%	60%	11,163	489	3,659	(7,015)	0.26	0.69	0.43
Oceanography	OCEAN	165	70%	30%	1,195	50	127	(1,018)	0.14	0.93	0.80
Occupational Safety & Health Admin.	OSHA	40	50%	50%	1,025	9	51	(965)	0.04	0.67	0.63
Philosophy/Religious Studies	PHIL	963	100%	0%	3,870	413	0	(3,457)	0.25	2.33	2.08
Pharmacy Technology	PHT	374	40%	60%	4,108	64	480	(3,564)	0.09	0.69	0.60
Physics	PHYSIC	2,308	40%	60%	3,957	396	3,559	(2)	0.58	0.58	0.00
Police Science	POLICE	1,119	40%	60%	1,342	192	1,007	(143)	0.83	0.93	0.10
Political Science	POLIT	2,295	100%	0%	3,275	985	0	(2,290)	0.70	2.33	1.63
Physical Science	PS	79	100%	0%	749	34	0	(715)	0.11	2.33	2.23
Psychology	PSYCH	3,411	100%	0%	3,866	1,463	0	(2,403)	0.88	2.33	1.45
Psychiatric Technology	PSYTCH	1,075	40%	60%	1,540	184	1,380	25	0.70	0.69	-0.01
Reading & Skills Study	READ	3,491	60%	40%	4,026	899	3,589	461	0.87	0.78	-0.09
Religious Studies	RELIG	78	100%	0%	1,303	33	0	(1,270)	0.06	2.33	2.27
Radio, Television & Film	RTVF	829	40%	60%	2,220	142	1,064	(1,013)	0.37	0.69	0.31
Student Development	SDEV	1,105	90%	10%	7,492	427	284	(6,781)	0.15	1.55	1.41
Sociology	SOC	1,294	100%	0%	813	555	0	(258)	1.59	2.33	0.74
Spanish	SPAN	3,399	100%	0%	4,410	1,458	0	(2,952)	0.77	2.33	1.56
Technical Calculations	TECALC	192	100%	0%	690	82	0	(608)	0.28	2.33	2.05
Theater Arts	THART	803	40%	60%	8,594	138	1,238	(7,218)	0.09	0.58	0.49
Welding Technology	WELD	861	20%	80%	10,058	74	2,652	(7,332)	0.09	0.32	0.23
Water Supply Technology	WST	980	100%	0%	7,839	420	0	(7,419)	0.13	2.33	2.21

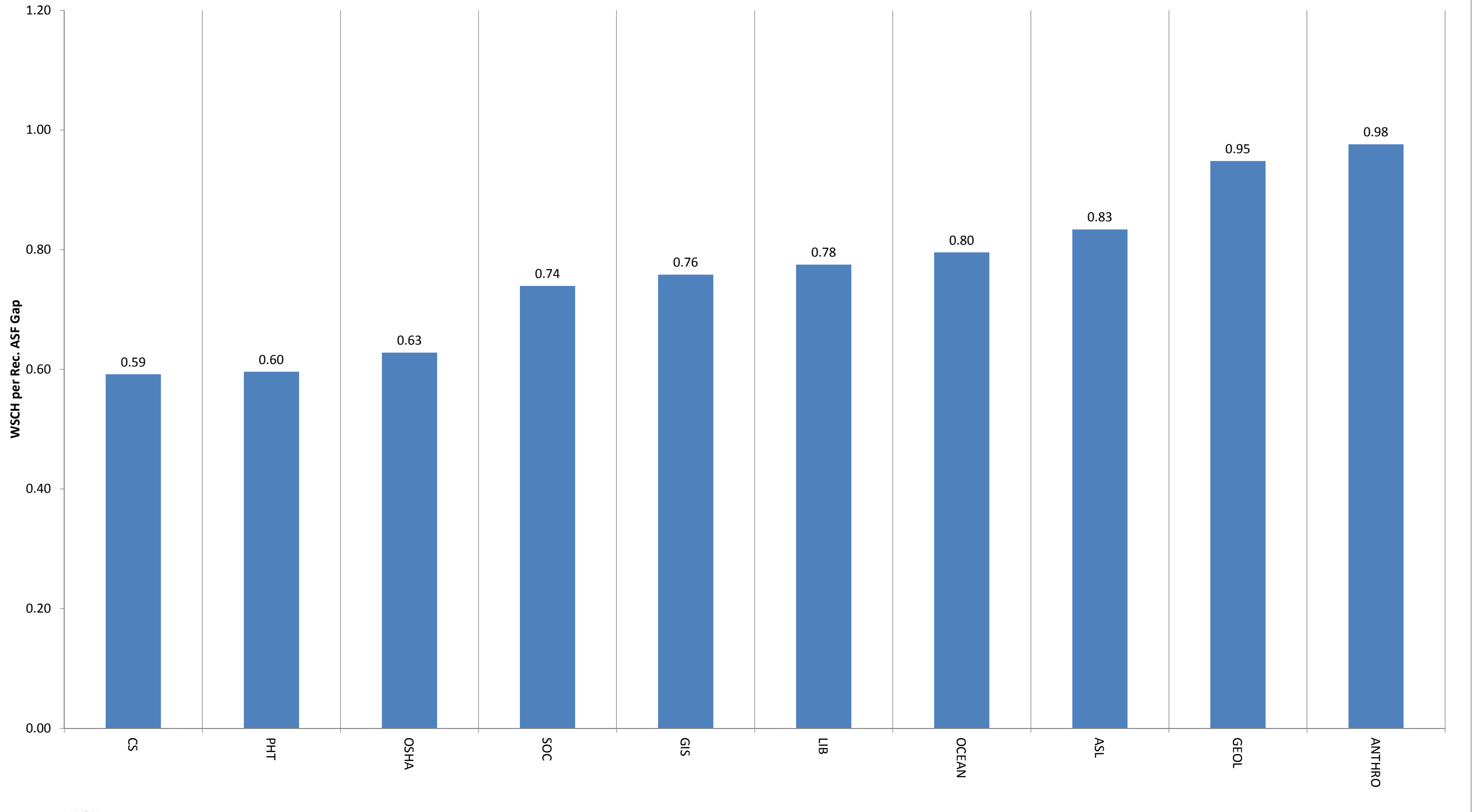
Fall 2014 - WSCH / Title V Recommended ASF Gap
Surplus WSCH/ASF Utilized



Fall 2014 - WSCH / Title V Recommended ASF Gap
Low Gap (0.01-0.50 WSCH/ASF Gap)



Fall 2014 - WSCH / Title V Recommended ASF Gap
Medium Gap (0.51-0.99 WSCH/ASF Gap)



Fall 2014 - WSCH / Title V Recommended ASF Gap
High Gap (1.00-2.33 WSCH/ASF Gap)

